

# FY 2024-2025

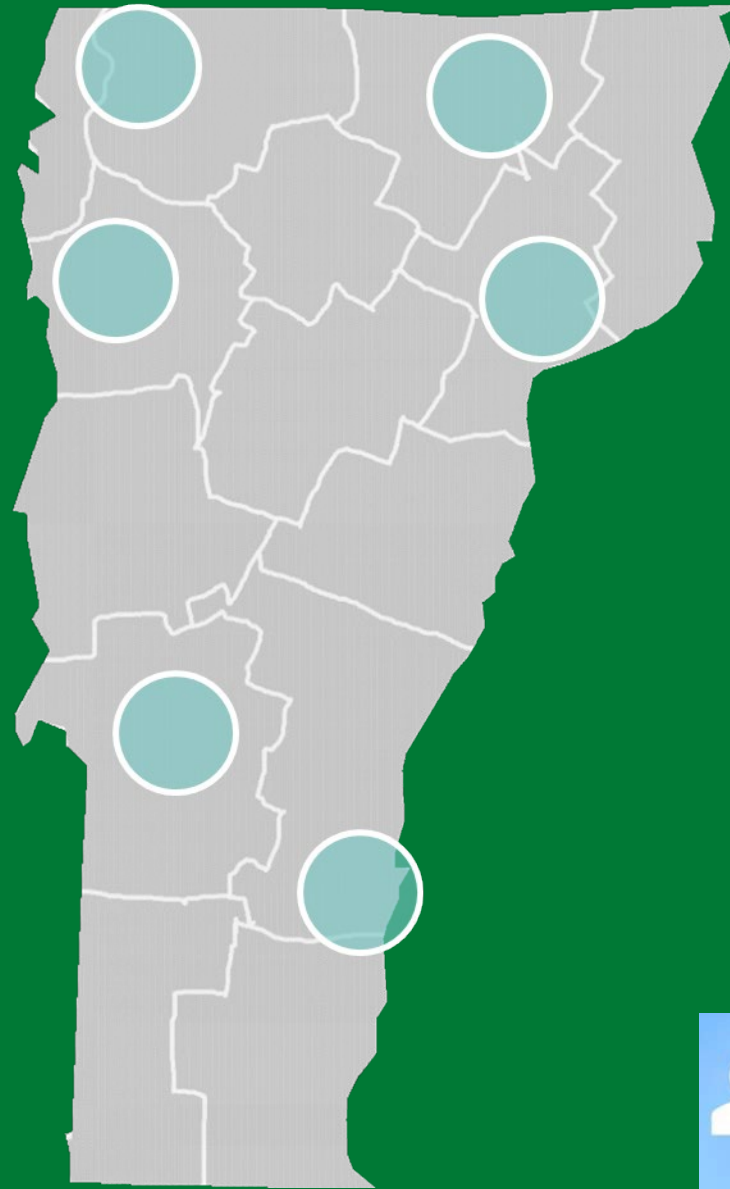
## DOC Women's Facility Programming and Conceptual Design

Jennifer M. V. Fitch, P.E.  
*Commissioner*

Joe Aja  
*Director, Design & Construction*

Tabrena Karish  
*Project Manager, Design & Construction*

January 26, 2024



### TIMELINE:

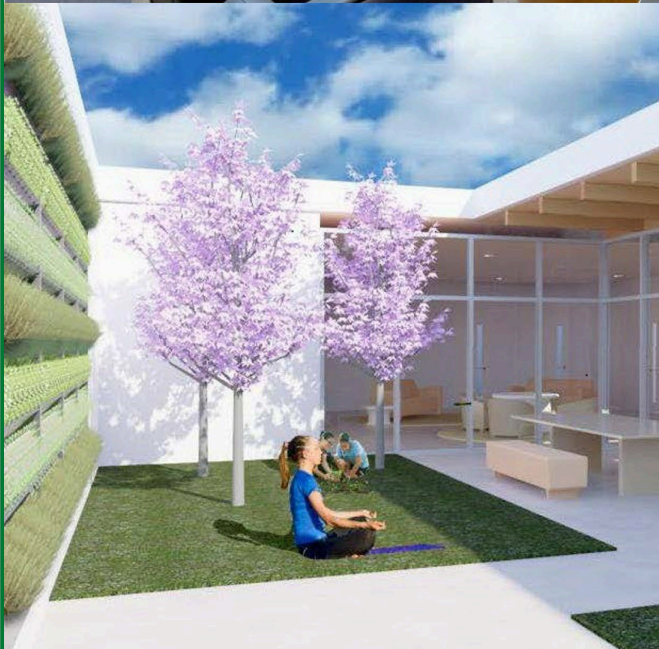
2020-2021: Developed Correctional Facility Feasibility Study

2021-2022: Programming and Conceptual Design of the Women's Facility

2023-2024: Site Selection



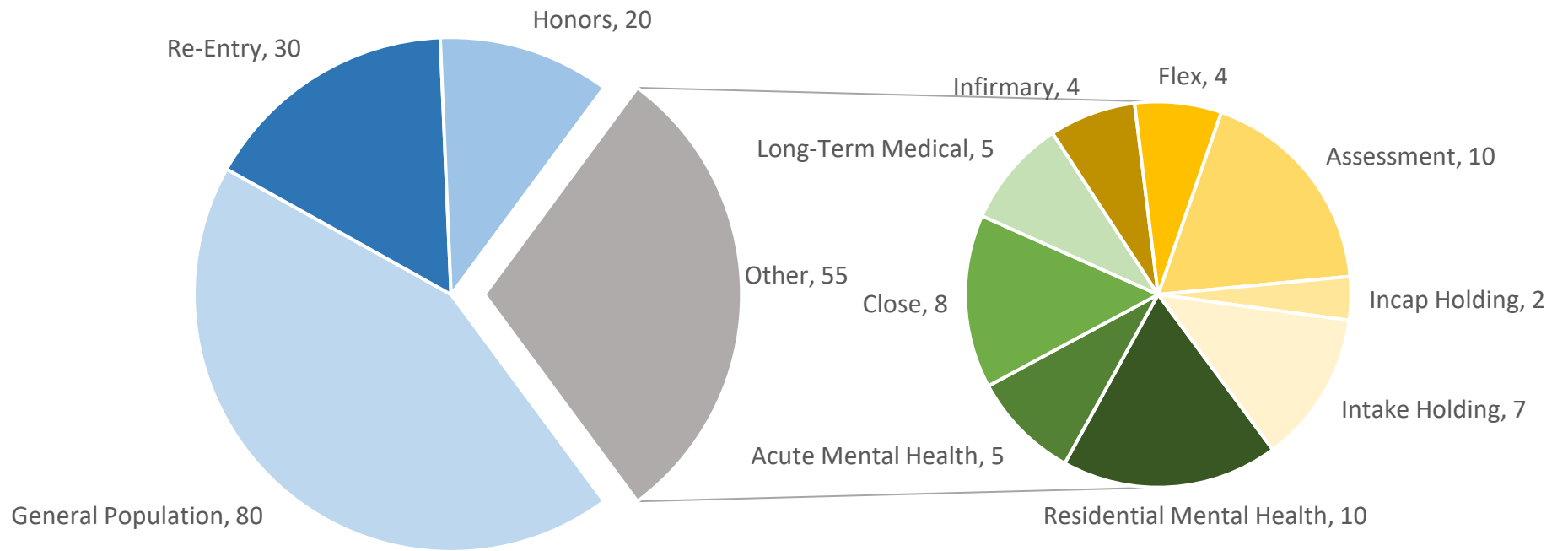
# Evidence-Based Design



# Housing Breakdown

- **Re-Entry: 30+**
- **General Population: 80**
- **Honors: 20**
- **Specialized Beds: 55**
  - Nonrated/Operational: 27
    - *Infirmary: 4*
    - *Flex: 4*
    - *Assessment: 10*
    - *Incap Holding: 2*
    - *Intake Holding: 7*
  - Rated/Permanent: 28
    - *Residential Mental Health: 10*
    - *Acute Mental Health: 5*
    - *Close: 8*
    - *Long-Term Medical: 5*

Housing Breakdown





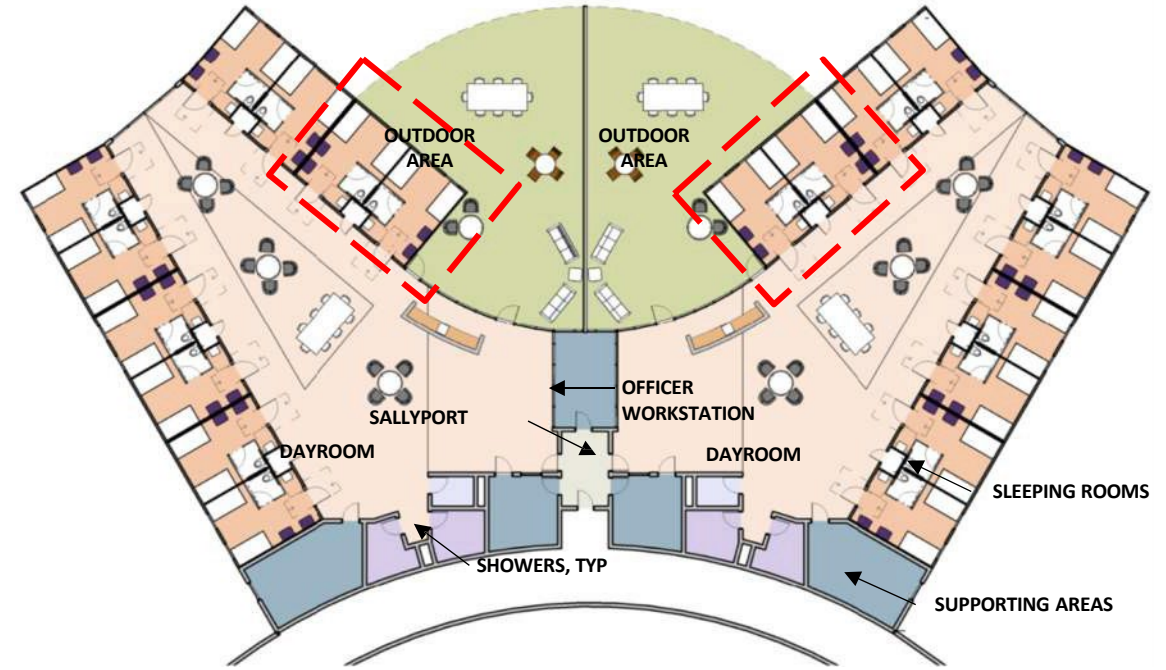
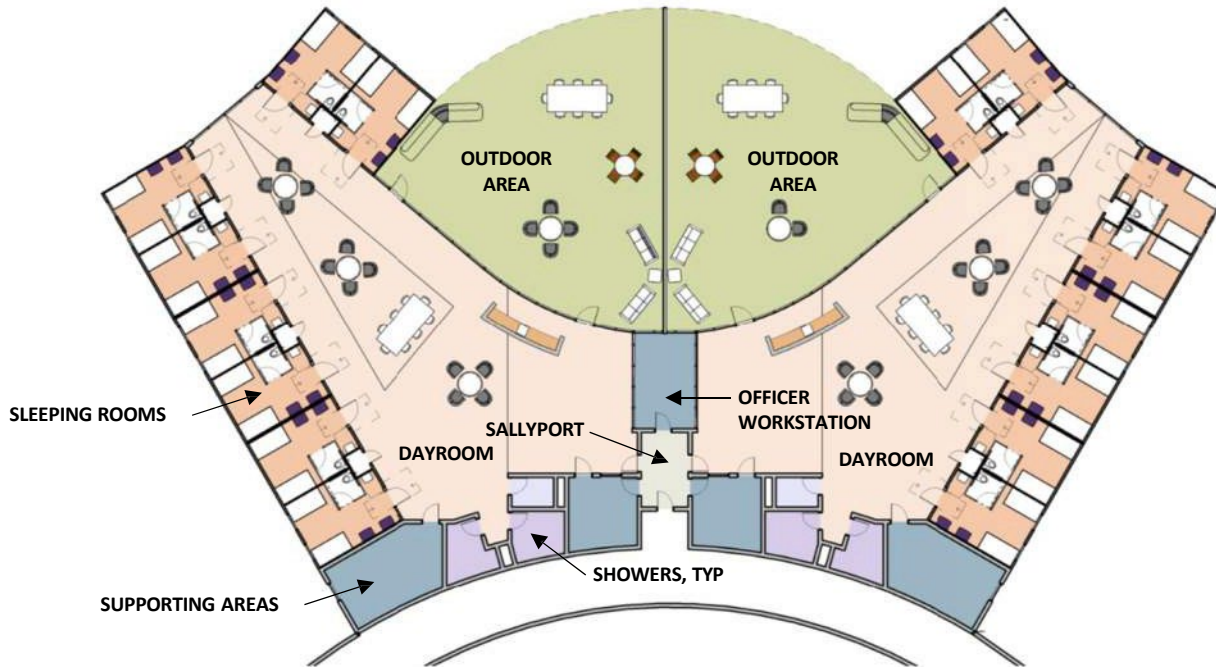
## SECURE RESIDENTIAL TREATMENT FACILITY

| SECURE FACILITY           |                 |   |                                     |                 |  | RE-ENTRY                                    |                 |  |
|---------------------------|-----------------|---|-------------------------------------|-----------------|--|---|-----------------|--|
| RATED BED CAPACITY        |                 |   | ADDITIONAL OPERATIONAL BED CAPACITY |                 |  | RATED CAPACITY                              |                 |  |
| UNIT                      | CAPACITY (BEDS) | CONFIGURATION                               | UNIT                                | CAPACITY (BEDS) | CONFIGURATION                              | UNIT  | CAPACITY (BEDS) | CONFIGURATION                                      |
| CLOSE                     | 8               | SINGLE, SECURE SLEEPING ROOM                | INTAKE                              | 7               | 2 SINGLE, 2 GROUP (4) SECURE SLEEPING ROOM | COMMUNITY RELEASE (WORK RELEASE / RE-ENTRY) | 30              | DOUBLE SLEEPING ROOM, POD CONFIGURATION OF 10 BEDS |
| MEDIUM                    | 40              | DOUBLE SLEEPING ROOM                        | INCAP                               | 2               | SINGLE SECURE SLEEPING ROOM                | RE-ENTRY (EXPANSION)                        | (30 BEDS)       | DOUBLE SLEEPING ROOM, POD CONFIGURATION OF 10 BEDS |
| MINIMUM                   | 40              | DOUBLE SLEEPING ROOM                        | ASSESSMENT                          | 10              | DOUBLE SECURE SLEEPING ROOM                |   |                 |  |
| LONG TERM/CHRONIC MEDICAL | 5               | DOUBLE SLEEPING ROOM (SPACE FOR (CAREGIVER) | INFIRMARY                           | 4               | SINGLE ISOLATION SECURE SLEEPING ROOM      |   |                 |  |
| ACUTE MENTAL HEALTH       | 5               | SINGLE SECURE SLEEPING ROOM                 | FLEX HOUSING                        | 4               | DOUBLE SECURE SLEEPING ROOMS               |   |                 |  |
| RESIDENTIAL MENTAL HEALTH | 10              | SINGLE SECURE SLEEPING ROOM                 |                                     |                 |  |   |                 |  |
| HONORS HOUSING            | 20              | DOUBLE SLEEPING ROOM                        |                                     |                 |  |   |                 |  |
| <b>RATED BED CAPACITY</b> | <b>128</b>      |   | <b>OPERATIONAL BED CAPACITY</b>     | <b>27</b>       |  | <b>RATED BED CAPACITY</b>                   | <b>30</b>       |  |
| <b>TOTAL CAPACITY*</b>    | <b>158</b>      |   |                                     |                 |  |   |                 |  |

| CONFIGURATION        | DRY/WET |
|----------------------|---------|
| SECURE SLEEPING ROOM | WET     |
| SLEEPING ROOM        | DRY     |

|                       |            |
|-----------------------|------------|
| RATED BED COUNT       | 158        |
| NON-RATED BED COUNT   | 27         |
| FUTURE BEDS           | 30         |
| TOTAL BEDS (DAY 1)    | <b>185</b> |
| TOTAL BEDS (EXPANDED) | <b>215</b> |

EXCLUDES OPERATIONAL BEDS

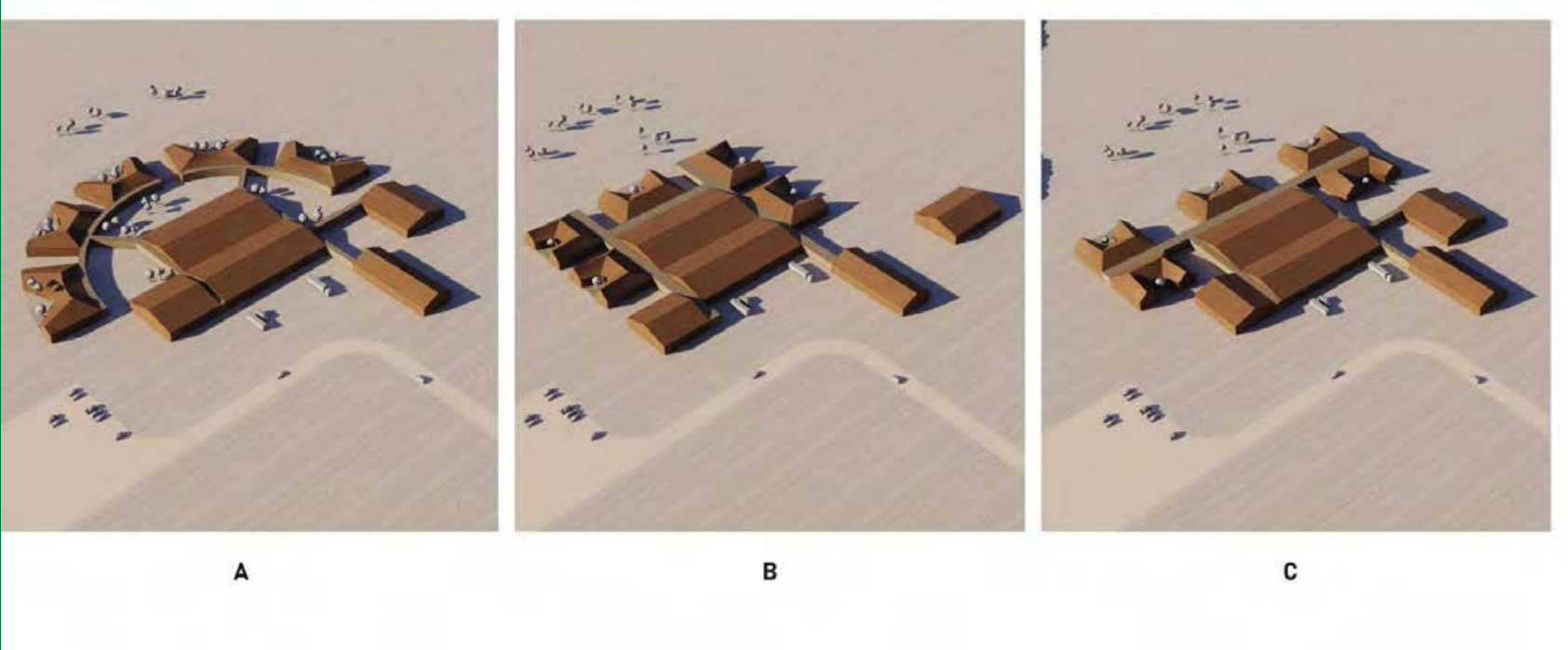


| 32 BED HOUSING UNIT     |                 |
|-------------------------|-----------------|
| SLEEPING ROOMS          | 2,457 SF        |
| DAYROOM                 | 5,241 SF        |
| SUPPORT AREAS           | 1,325 SF        |
| <b>GROSS SQFT TOTAL</b> | <b>9,023 SF</b> |

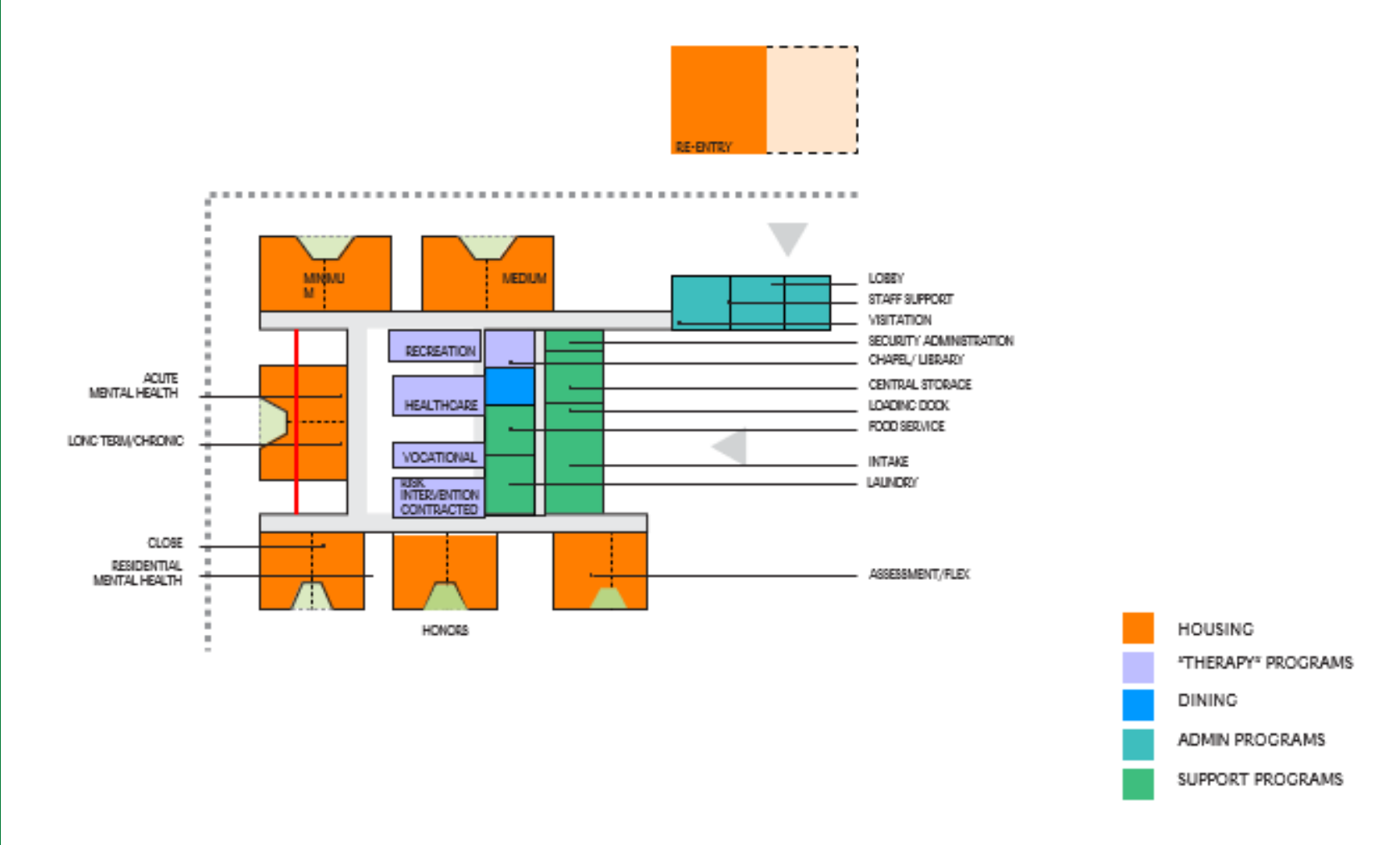
**+/- 7%**  
 GROSS SQUARE FOOTAGE  
 INCREASE FOR 8 ADDITIONAL  
 BEDS WITHIN A UNIT

| 40 BED HOUSING UNIT     |                 |
|-------------------------|-----------------|
| SLEEPING ROOMS          | 3,071 SF        |
| DAYROOM                 | 5,241 SF        |
| SUPPORT AREAS           | 1,325 SF        |
| <b>GROSS SQFT TOTAL</b> | <b>9,637 SF</b> |

# Massing Studies

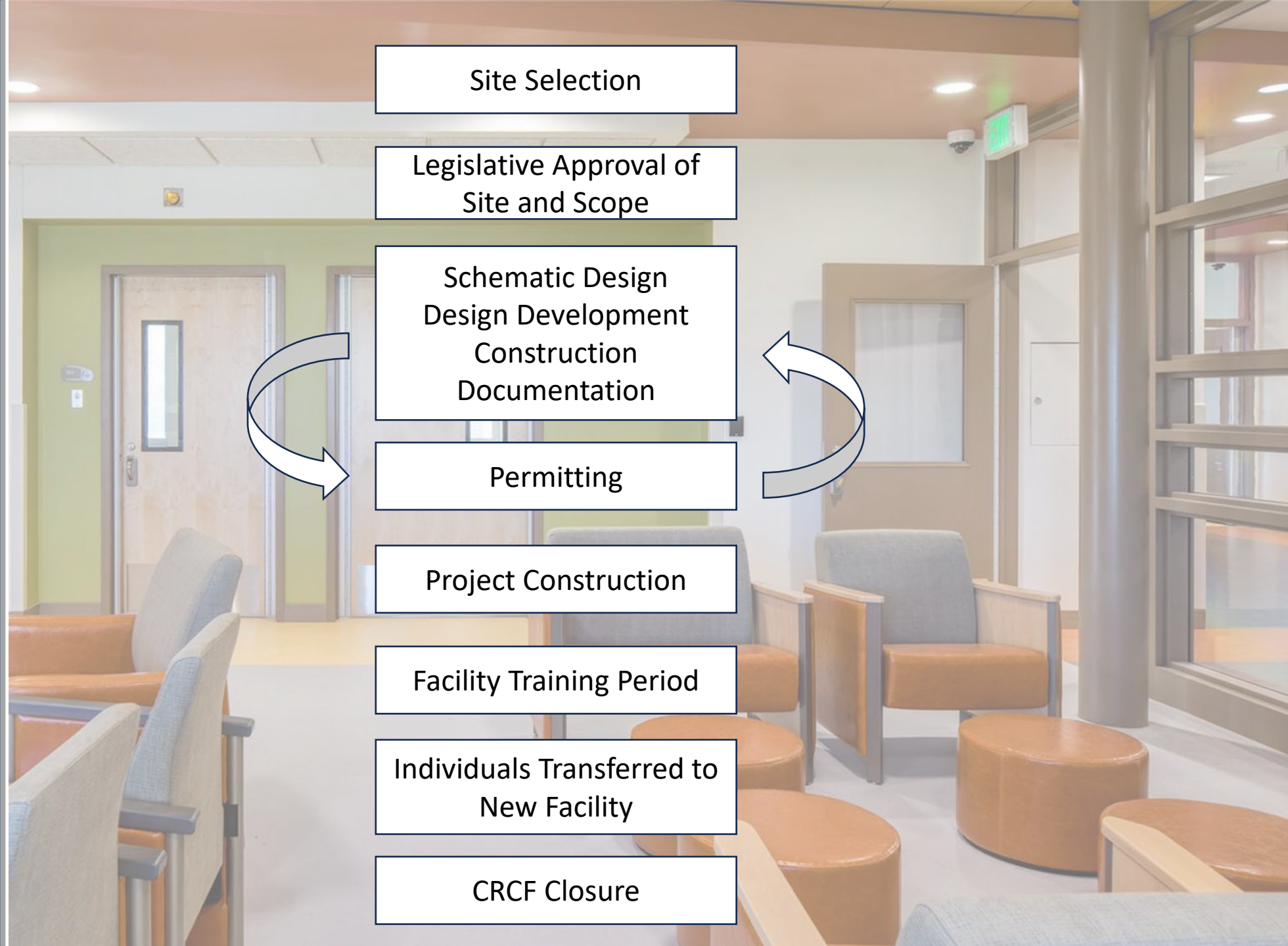


# Program Plan





# Next Steps



Site Selection

Legislative Approval of Site and Scope

Schematic Design  
Design Development  
Construction  
Documentation

Permitting

Project Construction

Facility Training Period

Individuals Transferred to New Facility

CRCF Closure

