



Vermont Center for Independent Living
Kate Larose
Pandemic Equity Coordinator

Senate Health & Welfare Committee
March 1, 2023

Work Overview

Assess

- Current pandemic related issues Vermonters with disabilities are experiencing

Respond

- Support needs that exist, including for COVID longhaulers

Develop

- Educational materials and resources for current and future pandemics
- Community for those who are still COVIDing

Advocate

- At the systems and individual levels for equal access to education, healthcare, and civic life

Figure 1

Social Determinants of Health

Economic Stability	Neighborhood and Physical Environment	Education	Food	Community and Social Context	Health Care System
Employment	Housing	Literacy	Hunger	Social integration	Health coverage
Income	Transportation	Language	Access to healthy options	Support systems	Provider availability
Expenses	Safety	Early childhood education		Community engagement	Provider linguistic and cultural competency
Debt	Parks	Vocational training		Discrimination	Quality of care
Medical bills	Playgrounds	Higher education		Stress	
Support	Walkability				
	Zip code / geography				

Health Outcomes

Mortality, Morbidity, Life Expectancy, Health Care Expenditures, Health Status, Functional Limitations

Health Equity

Health equity exists when all people have a **fair and just** opportunity to be healthy, especially those who have experienced socioeconomic disadvantage, historical injustice and other **avoidable inequalities** that are often associated with social categories of race, gender, ethnicity, social position, sexual orientation and disability.

The Current State of Things

**“Vermonters have
the tools needed to
protect themselves.”**

-Dr Mark Levine

Vermont Department of Health

Support **VT**Digger

DONATE

NEWSLETTER

SHOP



HEALTH

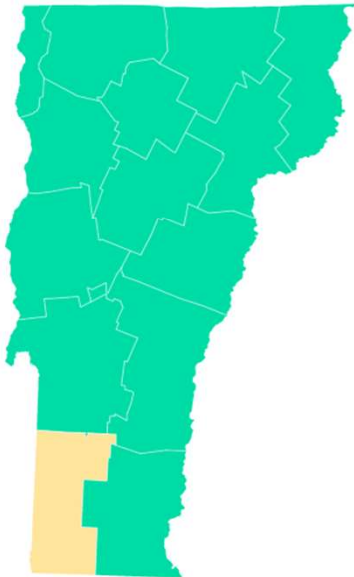
Vermont's Covid levels 'low' as national levels flatline

By **Erin Petenko**

Feb 22 2023

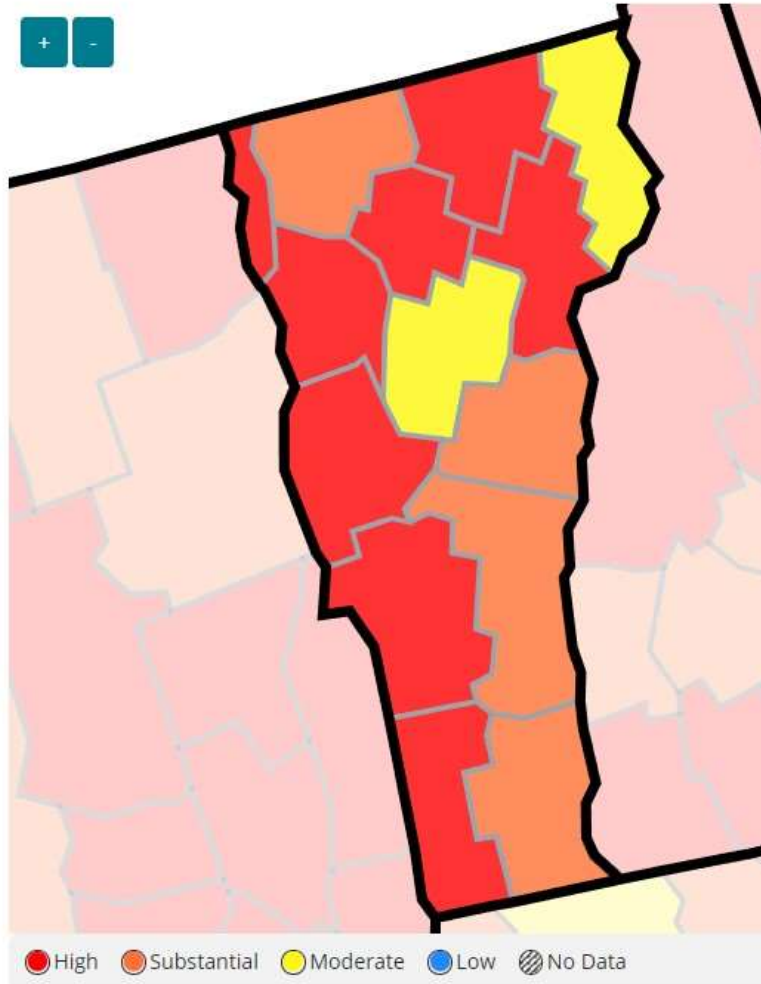
CDC Covid-19 Community Levels

Medium Low



Data Type:

Community Transmission




WELL · CORONAVIRUS

‘Kraken,’ the ‘most transmissible’ COVID variant yet, could spawn even more immune-evasive variants, new study says

BY ERIN PRATER

January 6, 2023 at 2:17 PM EST



HHS.gov 

@HHSGov



The more often you get COVID, the higher your risk of complications.



HEALTH AND SCIENCE

Omicron BQ, XBB subvariants are a serious threat to boosters and knock out antibody treatments, study finds

PUBLISHED WED, DEC 14 2022·4:26 PM EST | UPDATED THU, DEC 15 2022·6:32 PM EST

VTDIGGER

Vermont's walk-in Covid vaccination clinics to close by end of month

By Erin Petenko

Jan 3 2023



The clinics have run almost continuously since Covid vaccines became available, but state officials say there's not enough demand now to keep them going.



HEALTH

Vermont to wind down its state-run Covid-19 testing sites

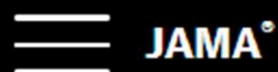
By **Erin Petenko**

May 17 2022

Vermont plans to phase out its state-run Covid-19 testing sites in the coming weeks, Health Commissioner Mark Levine announced at a press conference Tuesday.

Most sites will close down during the month of June, he said. After that, Vermonters seeking a PCR, LAMP or antigen test will be able to get one only through pharmacies or health care providers.

JAMA Network™



News From the Centers for Disease Control and Prevention

December 13, 2022

Inequity in Paxlovid Prescribing

Bridget M. Kuehn, MSJ

JAMA. 2022;328(22):2203-2204. doi:10.1001/jama.2022.20036

FDA announces Evusheld is not currently authorized for emergency use in the U.S.



FDA announces Evusheld is not currently authorized for emergency use in the U.S.

Update [1/26/2023] The U.S. Food and Drug Administration today revised the [Emergency Use Authorization](#) (EUA) for Evusheld (tixagevimab co-packaged with cilgavimab) to limit its use to when the combined frequency of non-susceptible SARS-CoV-2 variants nationally is less than or equal to 90%. Based on this revision, **Evusheld is not currently authorized for use in the U.S. until further notice by the Agency.**

Data show Evusheld is [unlikely to be active](#) against certain SARS-CoV-2 variants. According to the most recent CDC [Nowcast data](#), these variants are projected to be responsible for more than 90% of current infections in the U.S. This means that Evusheld is not expected to provide protection against developing COVID-19 if exposed to those variants.

SCIENTIFIC
AMERICAN®

Who Is Dying from COVID Now and Why

Nearly three years into the pandemic, COVID's mortality burden is growing in certain groups of people

By Melody Schreiber on November 16, 2022

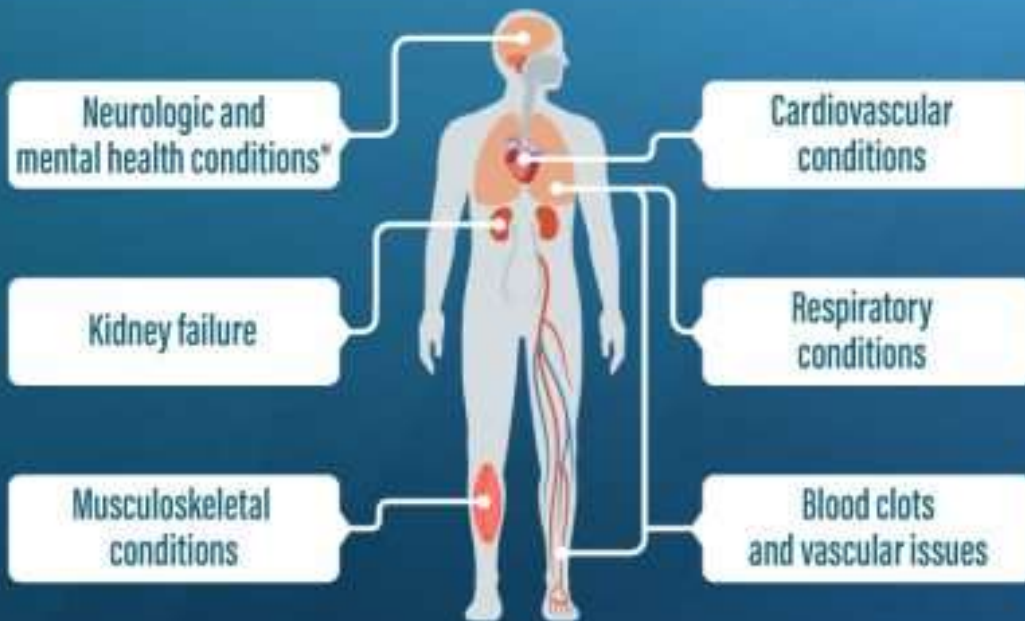
disability**scoop**

The Premier Source for
Developmental Disability News

COVID-19 Was Leading Killer Of People With Developmental Disabilities

by Shaun Heasley | September 26, 2022

Approximately
1 in 5 adults
ages 18+ have a
health condition
that might be related to
their previous COVID-19
illness, such as:



**Talk to your health care provider
if you have symptoms after COVID-19**



bit.ly/MMWR7121

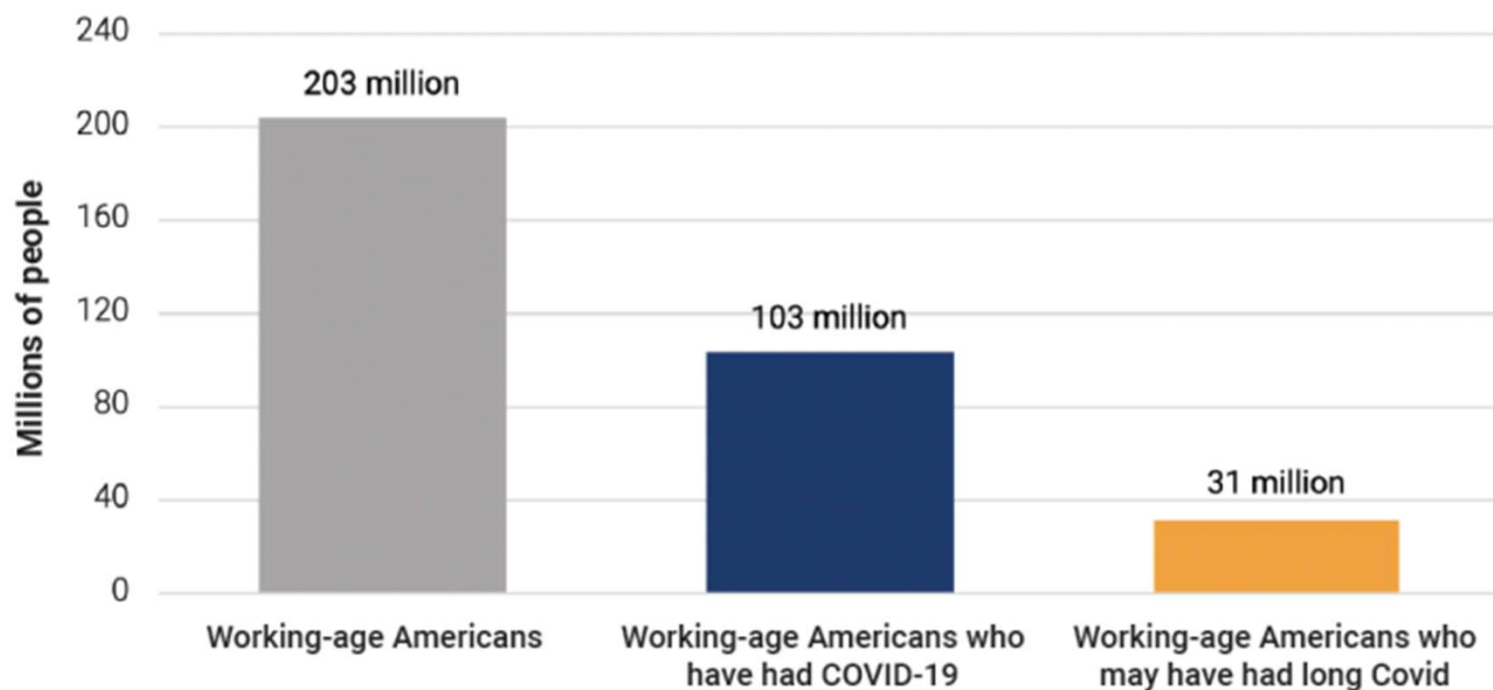
MAY 24, 2022

* Adults aged 65 and older at increased risk

MMWR

Figure 1: More than 30 million working-age Americans may have had long Covid

That is one out of seven working-age Americans



Source: Author's estimate based on data from U.S. Census Bureau, CDC, and UC Davis Health.

BROOKINGS



REPORT

New data shows long Covid is keeping as many as 4 million people out of work

Katie Bach · Wednesday, August 24, 2022

Long-COVID in children and adolescents



25.24%



Neuropsychiatric (%)

- **Mood** 16.50 (sad, tense, angry, anxiety, depression)
- **Fatigue** 9.66
- **Sleep disorder** 8.42 (insomnia, hypersomnia, poor sleep quality)
- **Headache** 7.84
- **Cognition** 6.27 (confusion, impaired concentration, learning difficulties, memory loss)
- **Dizziness** 4.40
- **Neurological abnormalities** 0.86 (pins and needles, tremor, numbness)
- **Balance problems** 0.54

Cardiorespiratory (%)

- **Respiratory symptoms** 7.62
- **Sputum/nasal congestion** 7.53
- **Orthostatic intolerance** 6.92
- **Exercise intolerance** 5.73
- **Chest pain** 4.62
- **Rhinorrhea** 4.15
- **Cough** 3.80
- **Sore throat** 2.47
- **Chest tightness** 2.45
- **Variations in heart rate** 2.29
- **Palpitations** 1.27

Gastrointestinal (%)

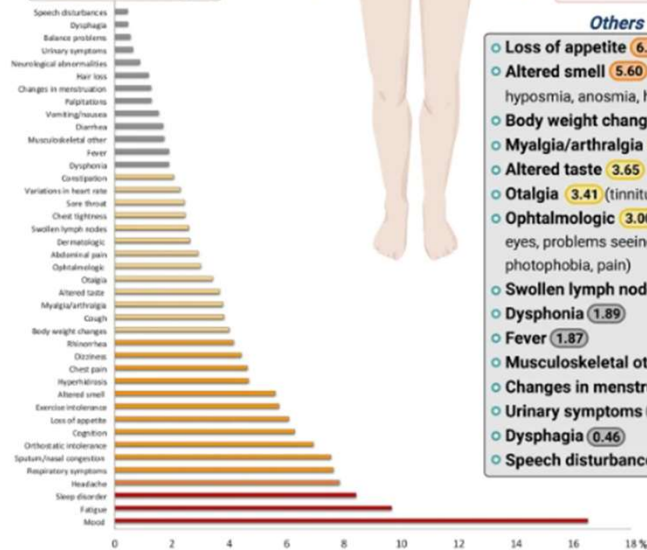
- **Abdominal pain** 2.91
- **Constipation** 2.05
- **Diarrhea** 1.68
- **Vomiting/nausea** 1.53

Dermatologic/Teguments (%)

- **Hyperhidrosis** 4.66
- **Dermatologic** 2.61 (dry skin, itchy skin, rashes, hives)
- **Hair loss** 1.17

Others (%)

- **Loss of appetite** 6.07
- **Altered smell** 5.60 (phantom smell, hyposmia, anosmia, hyperosmia)
- **Body weight changes** 3.99
- **Myalgia/arthralgia** 3.76
- **Altered taste** 3.65
- **Otalgia** 3.41 (tinnitus, earache or vertigo)
- **Ophthalmologic** 3.00 (conjunctivitis, dry eyes, problems seeing/blurred vision, photophobia, pain)
- **Swollen lymph nodes** 2.58
- **Dysphonia** 1.89
- **Fever** 1.87
- **Musculoskeletal other** 1.72
- **Changes in menstruation** 1.27
- **Urinary symptoms** 0.63
- **Dysphagia** 0.46
- **Speech disturbances** 0.44



STUDENT WELL-BEING

Thousands of Students Will Face Long COVID. Schools Need to Plan Now

Need for accommodations likely to rise, experts say



By [Catherine Gewertz](#) — June 20, 2022 ⌚ 7 min read

Local News

VT education officials say masking in schools may be needed to protect vulnerable students

Vermont Public | By [Mary Williams Engisch](#), [Peter Hirschfeld](#)
Published September 2, 2022 at 5:22 PM EDT



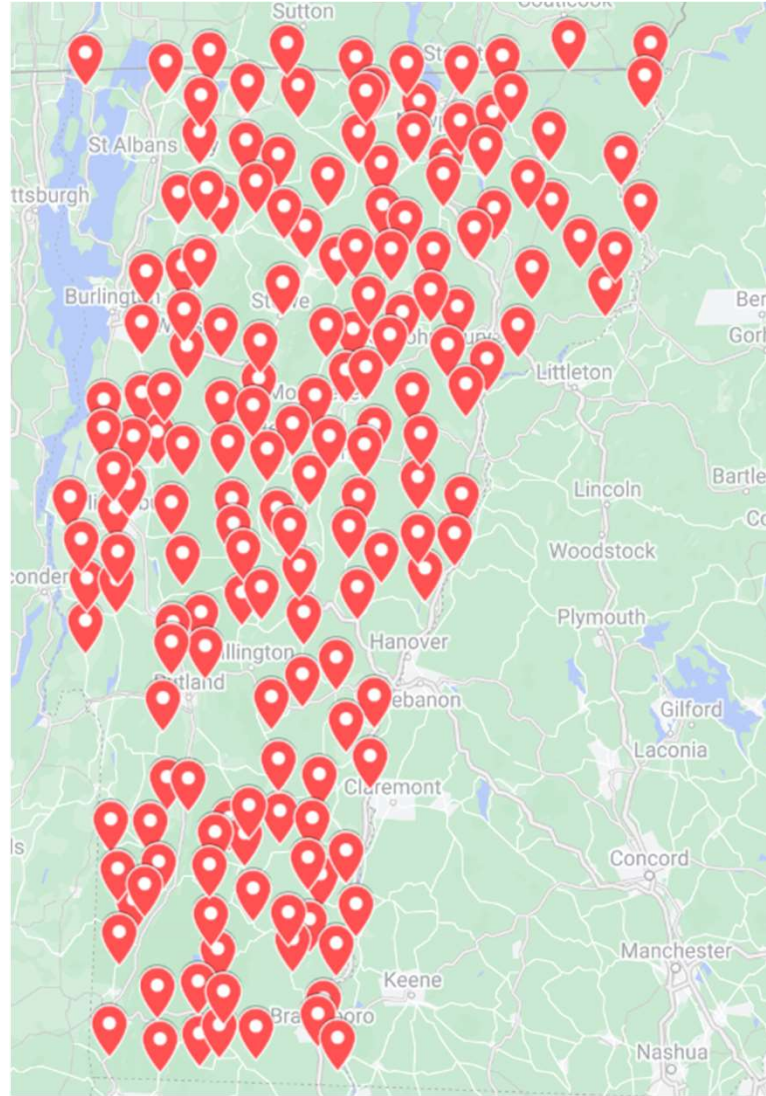
▶ LISTEN • 7:16



Voting and Polling Places

September 21, 2022

The ADA requires state and local governments and their election officials to ensure that people with disabilities have a full and equal opportunity to vote in all elections. This includes federal, state, and local elections. And it includes all parts of voting, like voter registration, selecting a location for polling places, and voting, whether on election day or during an early or absentee voting process.



In the past year, have you limited any of the following activities as a result of COVID concerns?

In person visits with friends or family	69%
Going to grocery store or pharmacy	55%
Medical or dental care	42%
Other necessary activities (voting, visits to post office or DMV, pet care, car care, etc.)	37%
Work or volunteer hours	20%
Education/schooling	10%

Figure 1

Social Determinants of Health

Economic Stability	Neighborhood and Physical Environment	Education	Food	Community and Social Context	Health Care System
Employment	Housing	Literacy	Hunger	Social integration	Health coverage
Income	Transportation	Language	Access to healthy options	Support systems	Provider availability
Expenses	Safety	Early childhood education		Community engagement	Provider linguistic and cultural competency
Debt	Parks	Vocational training		Discrimination	Quality of care
Medical bills	Playgrounds	Higher education		Stress	
Support	Walkability				
	Zip code / geography				

Health Outcomes

Mortality, Morbidity, Life Expectancy, Health Care Expenditures, Health Status, Functional Limitations

Health Equity

Health equity exists when all people have a **fair and just** opportunity to be healthy, especially those who have experienced socioeconomic disadvantage, historical injustice and other **avoidable inequalities** that are often associated with social categories of race, gender, ethnicity, social position, sexual orientation and disability.

- Who bears the burden of our current policies?
- Who bears the burden of our inaction?

“No one is safe until everyone is safe.”

-Dr Tedros Ghebreyesus

Director, World Health Organization