

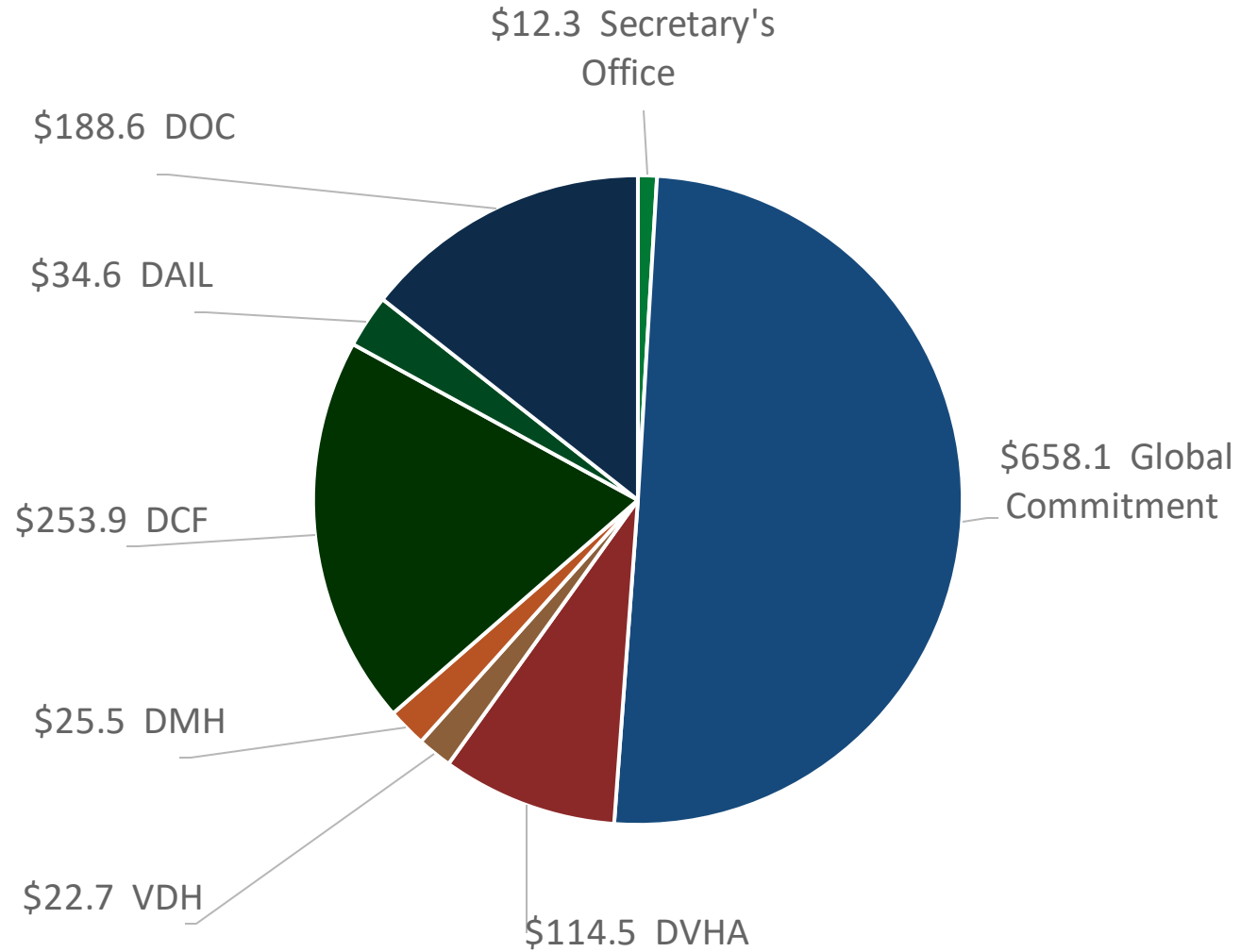


AHS Organization S.183 Testimony

Shayla Livingston

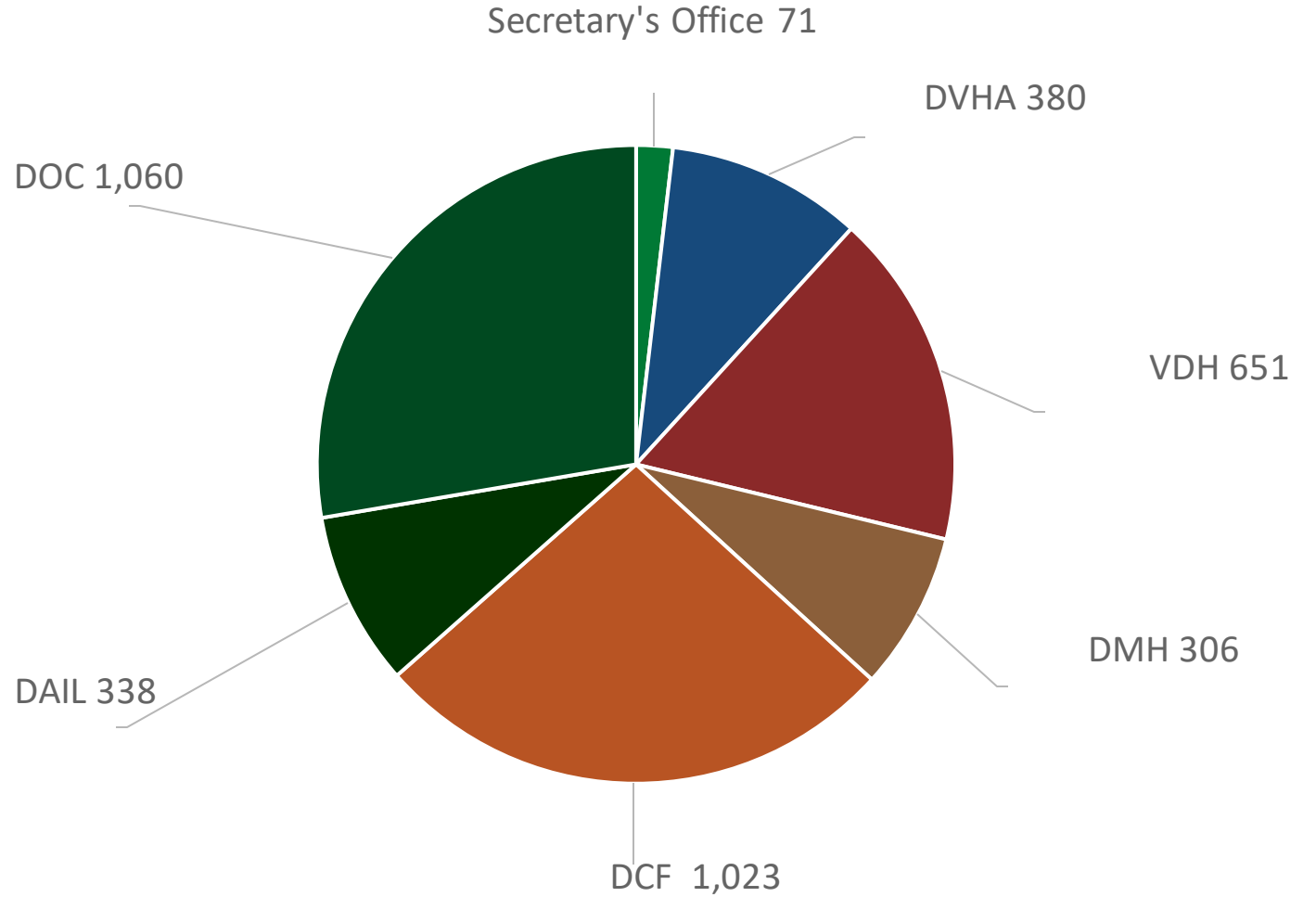
Policy Director, AHS

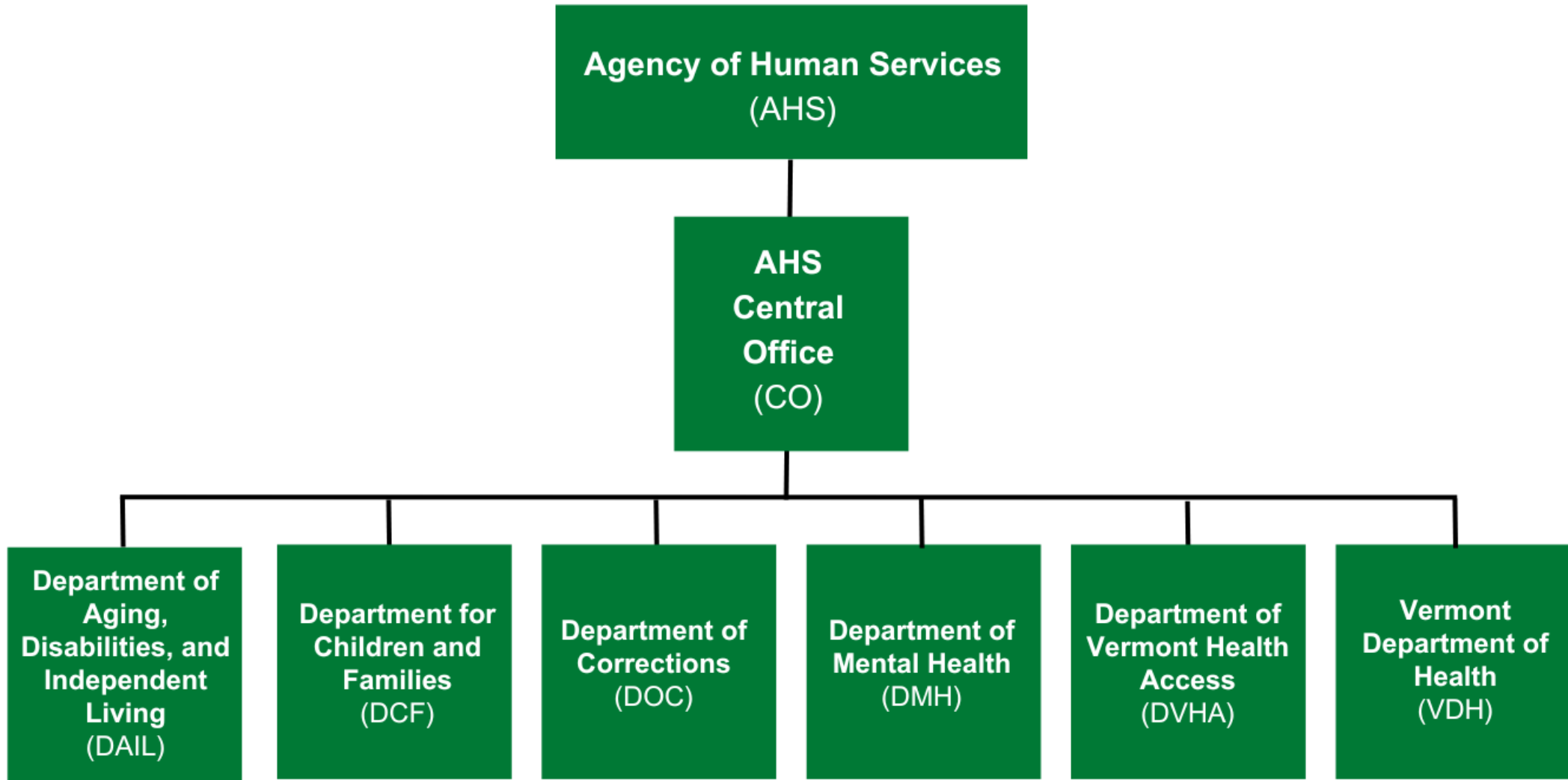
AHS – FY25 General Fund Budget by Department (\$ millions)



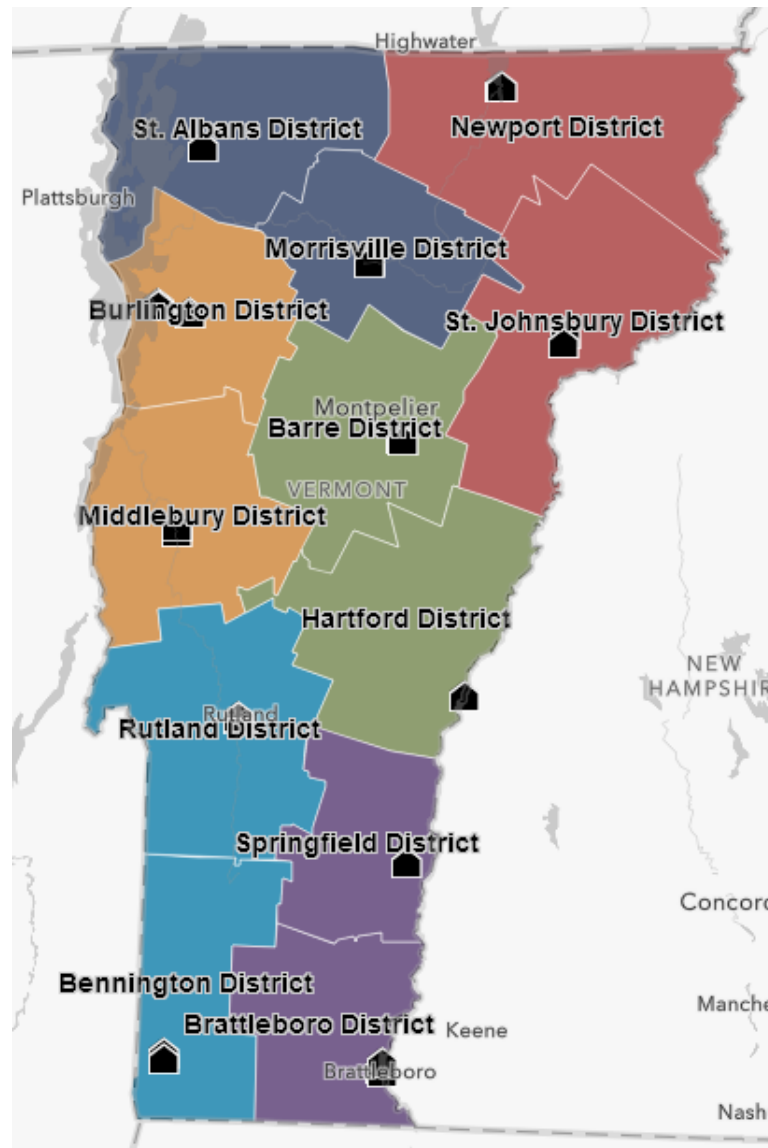
AHS – Positions by Department – 3,829

Data as of 1/3/2024





AHS Field Services



Barre & Hartford Districts: Ken Hammond,
802-798-4431

Burlington & Middlebury Districts: Kerri
Duquette-Hoffman, 802-585-4863

Brattleboro & Springfield Districts: Sue Graff,
802-585-5334

Newport & St. Johnsbury Districts: Chris
Mitchell, 802-585-6663

Rutland & Bennington Districts: Adam
Sancic, 802-798-2075

St. Albans & Morrisville Districts: Kristin
Prior, 802-343-6222

<https://humanservices.vermont.gov/about-us/field-services>

Department of Corrections



- Professional Standards & Compliance
 - Vermont Correctional Academy
 - PREA
- Operations
 - Facilities (6)
 - P&P (12)
 - Restorative Justice
- Health & Wellness
- Finance
- Investigations Unit
- Public Policy & Communications
- Office of the Commissioner

Department of Disabilities, Aging and Independent Living



- Adult Services Division
- Developmental Disabilities Services Division
- Division for the Blind and Visually Impaired
- Division of Vocational Rehabilitation (HireAbility)
- Division of Licensing and Protection
- Deaf, Hard of Hearing and DeafBlind Services

Department of Mental Health



- Vermont Psychiatric Care Hospital
- Quality & Accountability
- Mental Health Services
- Middlesex Therapeutic Community Residence

Department of Vermont Health Access



- Healthcare Eligibility & Enrollment
- Managed Care Operations
- Clinical Operations
- Pharmacy Unit
- Oversight & Monitoring
- Special Investigations
- Data Management Analysis & Integrity
- Quality & Risk Management
- Long Term Care Medicaid Program
- Director of Healthcare Policy & Planning
- Appeals Director
- Medical Officer

Vermont Department of Health



- Substance Use
- Health Statistics & Informatics
- Laboratory Sciences & Infectious Disease
- Family & Child Health
- Medical Practice Board
- Chief Medical Examiner
- Health Promotion and Disease Prevention
- Rural Health & Health Care Quality
- Emergency Preparedness, Response and Injury Prevention
- Environmental Health
- Health Equity Integration
- Public Health Workforce Director
- Office of Local Health District Offices
- Communications

Department of Children and Families



- Economic Services Division
- Family Services Division
- Office of Child Support
- Child Development Division
- Office of Economic Opportunity
- Disability Determination Services