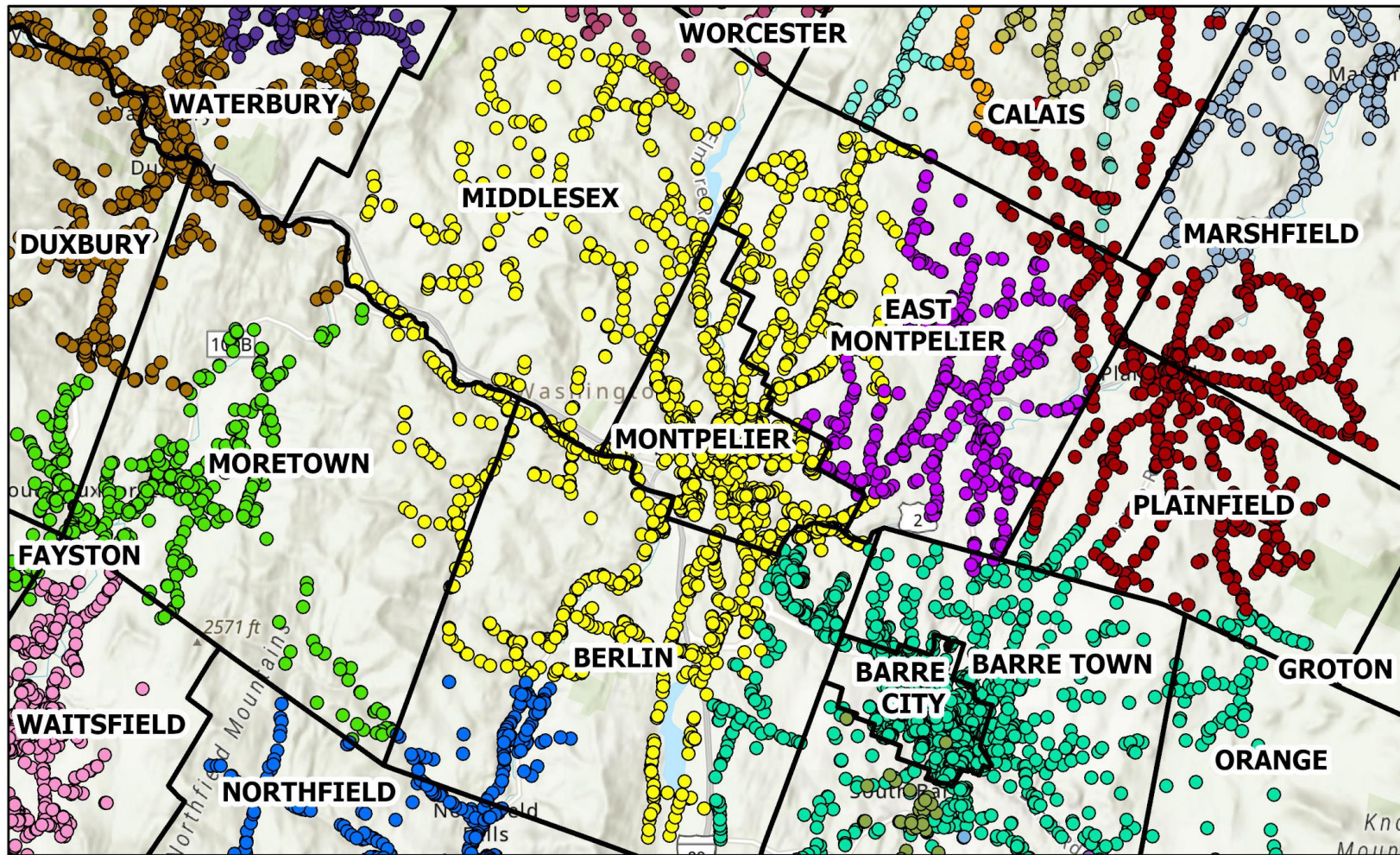


Points colored by USPS-provided town (and corresponding with 5-digit Zip):



- | | | | |
|---------------|-------------------|--------------------|--------------------|
| ● ADAMANT | ● EAST MONTPELIER | ● NORTH MONTPELIER | ● WATERBURY |
| ● BARRE | ● GRANITEVILLE | ● NORTHFIELD | ● WATERBURY CENTER |
| ● CALAIS | ● MARSHFIELD | ● PLAINFIELD | ● WORCESTER |
| ● EAST BARRE | ● MONTPELIER | ● SOUTH BARRE | |
| ● EAST CALAIS | ● MORETOWN | ● WAITSFIELD | |

Key tool on the Department website created by the Vermont Center of Geographical Information (VCGI):

Local Option Tax Finder tax.vermont.gov/business/local-option-tax

The screenshot displays the 'Local Option Tax Finder' interface. At the top, the title 'Local Option Tax Finder' is shown in a dark green header. Below the header, a search bar contains the address '115 STATE ST, MONTPELIER, VT' with a dropdown arrow on the left and a close 'X' button on the right. A 'Clear search location' button is positioned above the map. To the right of the map, there is a small map of Vermont labeled 'Adamant' and a vertical toolbar with icons for location, zoom in (+), zoom out (-), and home.

The map shows a green-shaded area representing the local option tax jurisdiction, which includes the towns of Wrightsville, Montpelier, and Montpelier Junction. Other nearby locations like East Montpelier Center and East Montpelier are also labeled.

On the left side, a results panel titled 'Results:1' displays the 'MONTPELIER Tax Rates' in a white box with a blue border. The rates are listed as follows:

- Sales: 6%
- Meals: 10%
- Alcoholic Beverages: 11%
- Rooms: 10%
- Local Option Tax Applied: Meals/Alcohol, Rooms