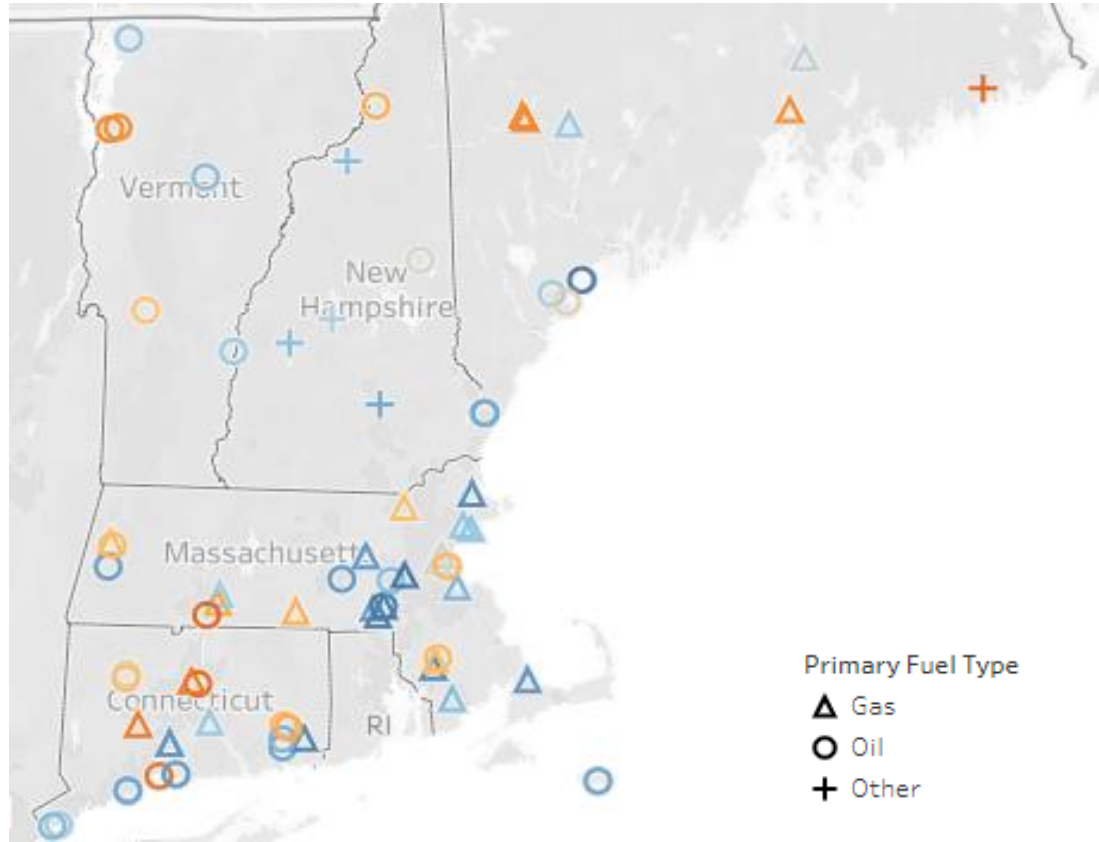


Section 248 Reform

Peter Sterling, Renewable Energy Vermont
Testimony to Senate Finance Committee
January 19th, 2024

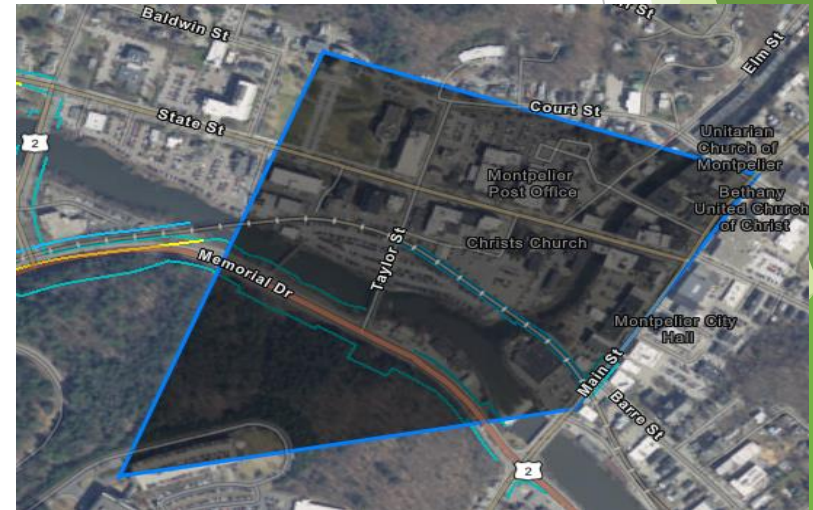


Why We Need Section 248 Reform: Environmental Justice



- ▶ Vermont 5 has oil “peaker” plants that each run <9hrs/year

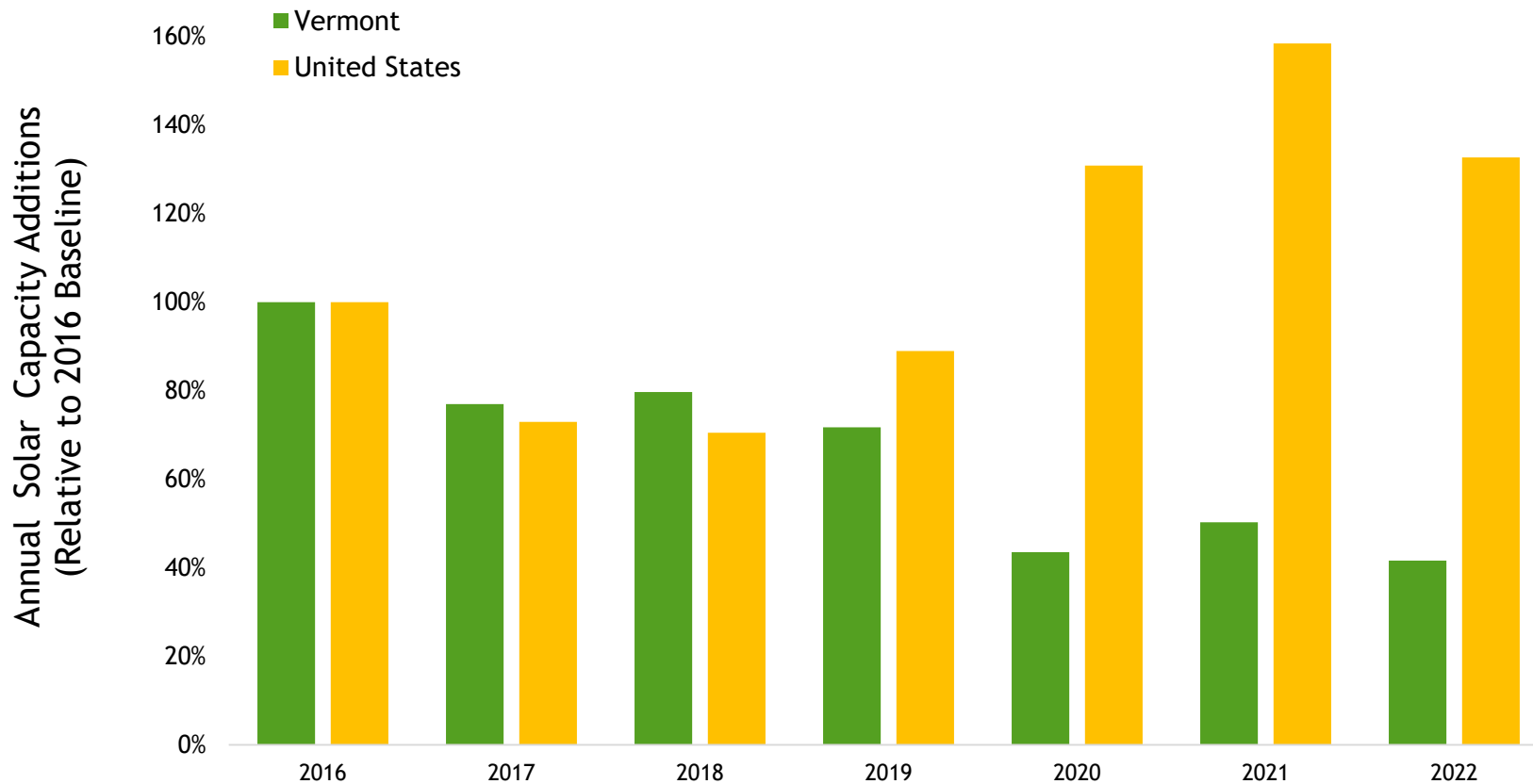
www.cleangroup.org/initiatives/phase-out-peakers/maps/



60 acre 360MW baseload natural gas facility in Dayville, CT

- ▶ New England has 81 oil & baseload natural gas plants
- ▶ VT has no baseload natural gas plants

Solar installations are accelerating nationwide but *slowing in Vermont*



Quechee Analysis 101

Quechee Analysis is a two-part determination used to establish whether a project has an *undue adverse aesthetic impact* on the surrounding area.

A project is deemed to have an *adverse* impact if it does not “fit” with the surroundings in terms of the size and colors of the materials used, its visibility, and its impact on open space.

An adverse impact is *undue* if it does one or more of the following:

1. Violates a clear, written community standard intended to preserve the aesthetics or scenic beauty of the area
2. Offends the sensibilities of the average person, is offensive or shocking because it is out of character with its surroundings or significantly diminishes the scenic qualities of the area, or
3. Fails to take generally available mitigating steps which a reasonable person would take to improve the harmony of the Project with its surroundings



Shocking and offensive?

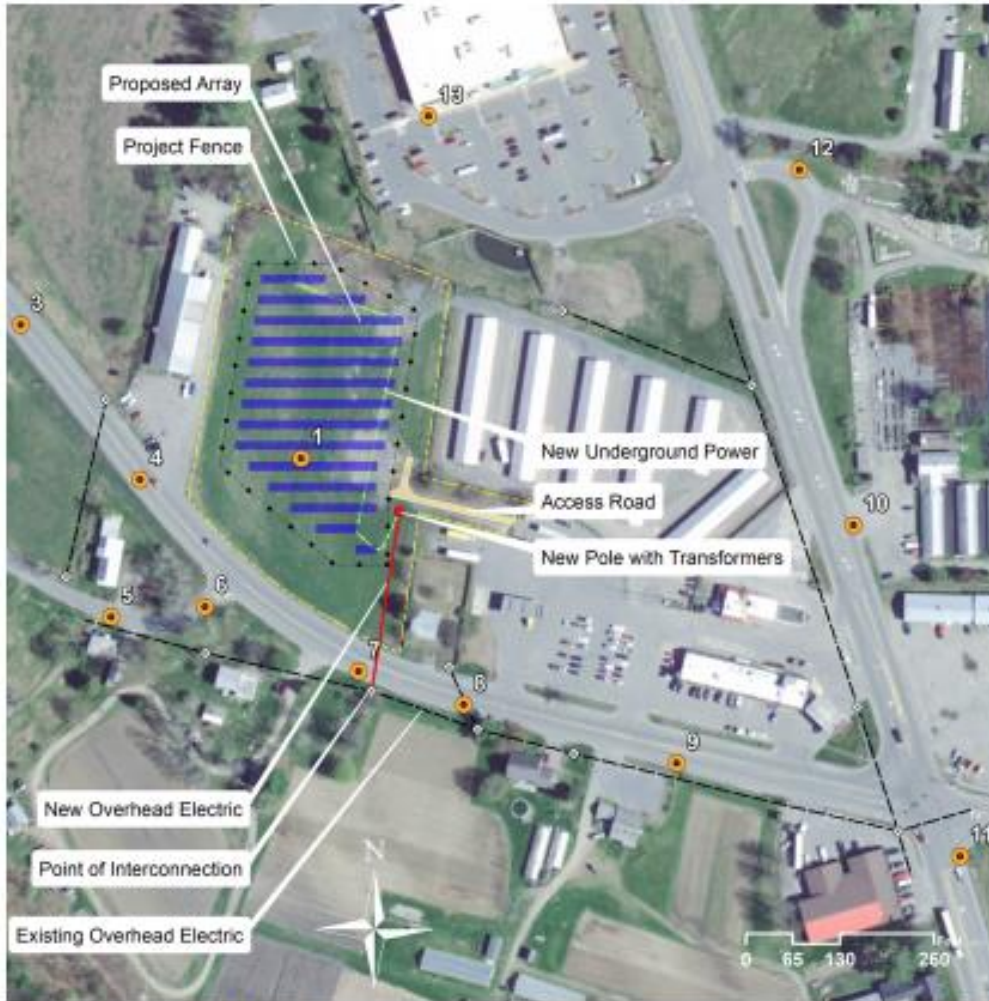


Proposed project site in Manchester



Visualization of the project at the time of installation (top) and with 4-6 years of vegetation growth (bottom)

Scenic Beauty?



Proposed project site in Bradford



Viewpoint 2: Approximately 180° panoramic view from Vermont Route 25, southeast of the project site. This view pans from roughly southwest (left) to northeast (right). The orange rectangle near the center of this image represents the following photo, which is captured with a 50mm equivalent lens.



Street view near the project site