

VT Agency of Transportation: Highway Safety & Design Section FY 2025 Paving Program Budget

House Transportation Committee – February 1, 2024

Presented by: Jesse Devlin, Highway Safety & Design Program Manager



**WILMINGTON-BRATTLEBORO NH 2971(1)
VT ROUTE 9**



PAVING PROGRAM GENERAL OVERVIEW

FEBRUARY 1, 2024

VT AGENCY OF TRANSPORTATION – HIGHWAY SAFETY & DESIGN SECTION
FY2025 PAVING PROGRAM BUDGET



VTrans' mission is through excellent customer service, provide for the safe and efficient movement of people and goods in a socially, economically, and environmentally sustainable manner:

- The pavement design group is responsible for the development and delivery of plans, specifications, and estimates for projects that are focused on preserving and improving our roadway surfaces.
- The projects contained within the Paving Program address safety, mobility, and asset condition, which directly contributes to meeting our mission.

The pavement design group consists of six team members; comprised of project managers, engineers, and technicians.

In addition to the development of projects, the team has a great deal of responsibility including but not limited to:

- **Fiscal responsibility:** *oversight of individual project and program budgets*
- **Customer Service:** *point of contact throughout a project's development*
- **Quality:** *ensure that the design meets the intent of the project*
- **Schedule:** *on time delivery of a project*

Assets are the physical elements of the transportation system, such as pavements, bridges, culverts, guardrail, signs, and traffic signals. VTrans works to keep assets in a state of good repair, and balancing the costs associated with doing so, across various asset types.

Regarding pavement condition, VTrans collects updated network level pavement data, the condition of the roadway is rated based on rutting, cracking, and roughness. This information is utilized, considering budget and traffic volumes, to identify projects and pavement treatments that serve to improve the condition of the network as a whole.

PROJECT SCOPE DEFINITION



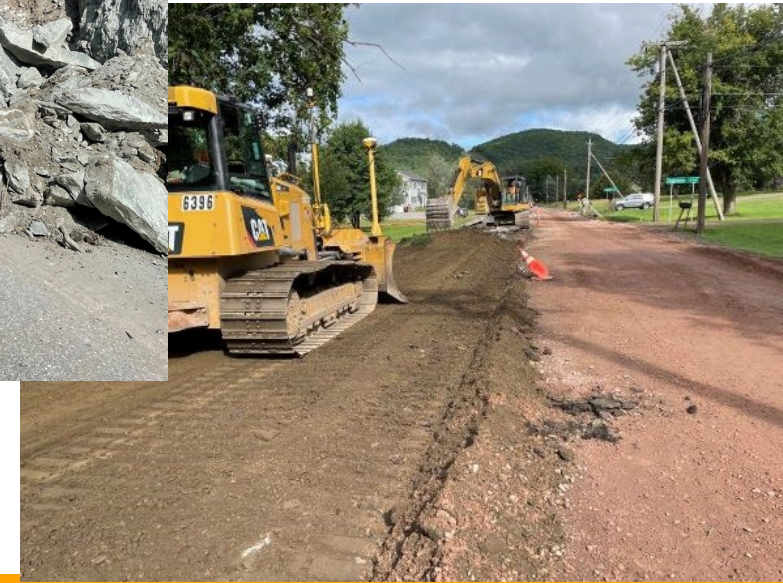
- Culvert replacement
- Shoulder widening
- Pavement markings
- Pedestrian crossings
- Slope stabilization
- Guardrail improvements
- Centerline rumble stripe installation
- Intersection layout improvements
- Signage updates and/or improvements

ASSET & SAFETY IMPROVEMENTS

Scope: This project is a 8.3 mile concrete slab removal project on US Route 2 in Richmond and Bolton. In addition to improving the roadway surface, work included the installation of drainage improvement, signage, traffic signal improvements, and shoulder improvements.

Construction Cost Est: \$20.45 Million (\$2.5 Million / Mile)

Project Status: Construction of this project began in the Summer of 2022 and is expected to be completed in Summer of 2024.



RICHMOND-BOLTON STP 2924(1) – US ROUTE 2

FY 2025 PAVING PROGRAM

- Appropriation of \$130.14 million
- Decrease of \$11.57 million compared to the FY 2024 Paving Program budget
- Includes three primary project phases
 - Preliminary Engineering (design activities)
 - Right-of-Way (acquisition of property and/or easements)
 - Construction
- Budget will fund construction of 46 paving projects, and will fund the preliminary engineering and/or right-of-way acquisition on an additional 32 projects

138 Miles to be paved on the Interstate, State, and Class I system

65	Miles to be paved under Federal and District leveling /mill and fill on the State system
----	--

*Anticipated mileage noted above is associated with calendar year 2024

19 V.S.A. 10g(g)(1) Report compiles projects that have been added to the program subsequent to the FY24 program

These projects were primarily programmed due to the current condition of the asset

- BARTON STP PC26(2) – VT Route 58, VT Route 16, US Route 5
- MIDDLEBURY-RIPTON DLEV2305 – VT Route 125
- MILTON-ST. ALBANS TOWN IM 089-3(83) – Interstate 89
- RANDOLPH STP PC26(3) – VT Route 66, VT Route 12, VT Route 12A
- WILLIAMSTOWN DLEV2309 – VT Route 64
- WOLCOTT-HARDWICK DLEV2310 – VT Route 15

19 V.S.A. 10g(g)(1) REPORT SUMMARY

19 V.S.A. 10g(g)(2) Report compiles projects that have increased by more than \$8,000,000 or by more than 100% compared to the FY24 estimate

- COLCHESTER-ESSEX NH PS24(11) – VT Route 15 – Increase by more than 100% (\$1,765,748 - \$4,057,022)–Project is a 1.95 mile mill and fill project in an urban environment. Based on the price variation and width of roadway (four travel lanes) on this project the previous project construction cost estimates were underestimated and has been updated to reflect current bid trends.
- EAST MONTPELIER-HARDWICK STP PS24(5) – VT Route 14 – Increase by more than \$8 million (\$25,994,325 - \$40,043,859) Project is an 18.92 mile reclaim project. Based on the price variation on this project type the project construction cost estimate has been updated to reflect current bidding trends.
- KILLINGTON-STOCKBRIDGE ER STP 022-1(25) – VT Route 100 – Increase by more than \$8 million (\$18,704,677 - \$27,211,568) Project is a 10.69 mile reclaim project. Based on the price variation on this project type the project construction cost estimate has been updated to reflect current bidding trends.
- RYEGATE-ST. JOHNSBURY STP FPAV(65) – US Route 5 – Increase by more than 100% (\$2,574,300 - \$7,716,768) Project is a 19.39 mile federal leveling / mill and fill project. The previous project construction cost estimates were underestimated considering the project length .

19 V.S.A. 10g(g)(2) REPORT SUMMARY

19 V.S.A. 10g(g)(3) Report compiles projects that were funded for construction in the FY24 program and are no longer funded for construction in the FY25 program

All projects that are listed on this report have completed construction or will be complete by the end of the current fiscal year.

- BARTON-COVENTRY STP FPAV(63) – US Route 5
- BARTON-DERBY IM SURF(71) – Interstate 91
- BRATTLEBORO-NEWFANE STP 2940(1) – VT Route 30
- BRIGHTON-FERDINAND STP FPAV(81) – VT Route 105
- BROOKFIELD-MONTPELIER IM 089-1(69) – Interstate 89
- BURLINGTON NH PC22(1) – US Route 2, US Route 7
- CHARLOTTE-SOUTH BURLINGTON NH PS22(2) – US Route 7
- FERDINAND-BLOOMFIELD STP FPAV(67) – VT Route 105
- LYNDON-BARTON IM 091-3(55) – Interstate 91
- MONTPELIER NH PC24(2) – US Route 2
- MONTPELIER STP PC24(3) – US Route 302
- PEACHAM-MARSHFIELD STP FPAV(78) – VT Route 232
- STOCKBRIDGE-BETHEL STP SURF(79) – VT Route 107
- WESTMINSTER-SPRINGFIELD IM 091-1(86) – Interstate 91
- WILMINGTON-BRATTLEBORO NH 2971(1) – VT Route 9

19 V.S.A. 10g(g)(3) REPORT SUMMARY