



# VERMONT AGENCY OF TRANSPORTATION

## FY2025 Budget Presentation

*Carolyn Cota, P.E. Structures  
Program Manager*



- Funding splits for Structures
- Funding source distribution
- Structures SFY 2025 Budget
  - Interstate Bridge
  - State Highway Bridge
  - Town Highway Bridge
- Accelerated Bridge Program
- July 2023 Flood Projects
- Completed Projects (Before/After)
- Future Funding and Risks



# Presentation Overview

**Interstate Bridge Program** – Funds structures within Vermont’s Interstate corridor including bridges crossing over the interstate.

- Shared funding – 90% Federal and 10% State

**State Highway Bridge Program** – Funds bridges, large culverts, and retaining walls on Vermont’s State Highway system.

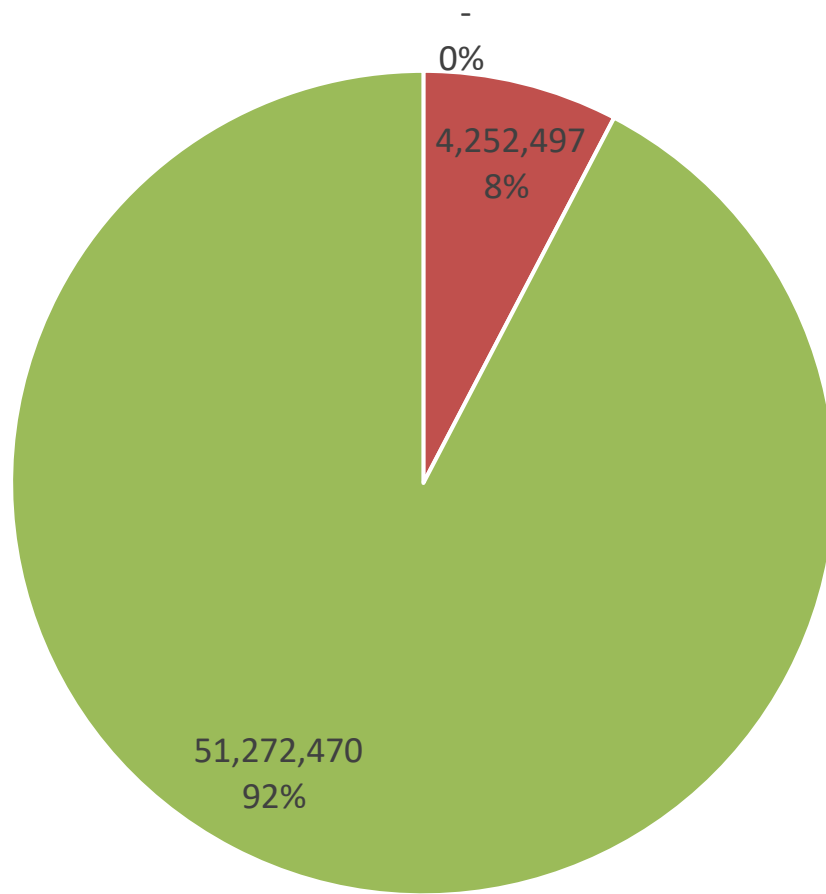
- Shared funding – 80% Federal and 20% State
- ER Permanent Projects – 81.08% Federal and 18.92% State

**Town Highway Bridge Program** – Funds federally-eligible bridges on Class 1, 2, and 3 Town Highways.

- Shared funding – 80% Federal, 10%+ State, and 10%- Local/IIJA Projects – 100% Federal for construction phase

Bridge Programs Funded

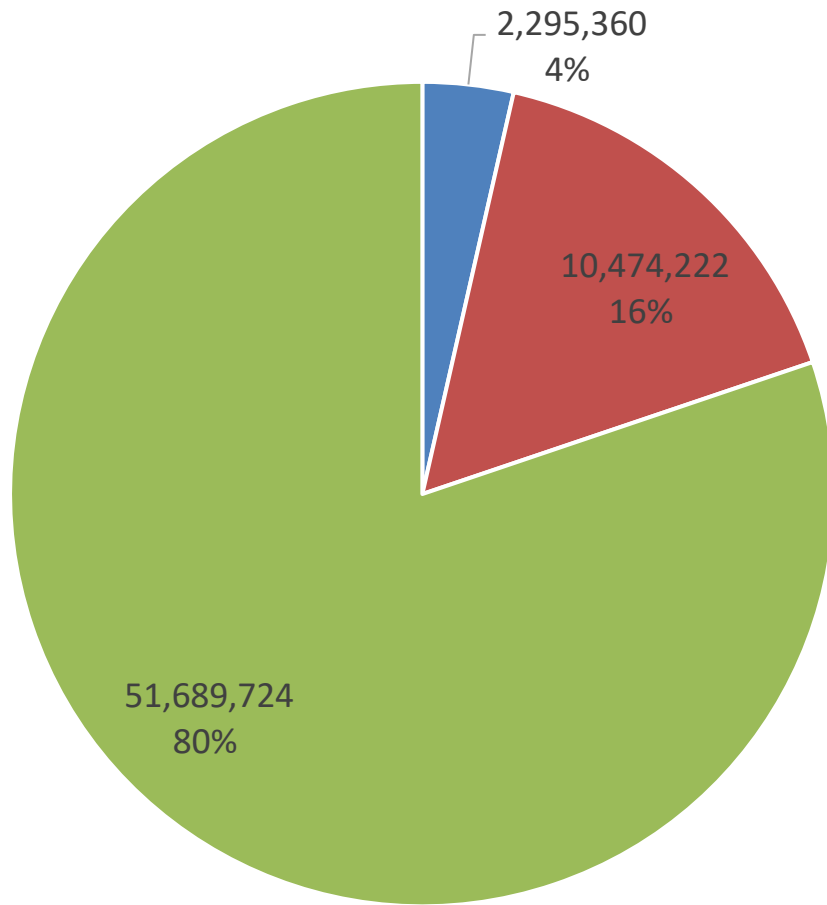




- T-Fund
- TIB/TIB Bond
- Federal

# FY2025 Budget for the Interstate Bridge Program by Funding Source

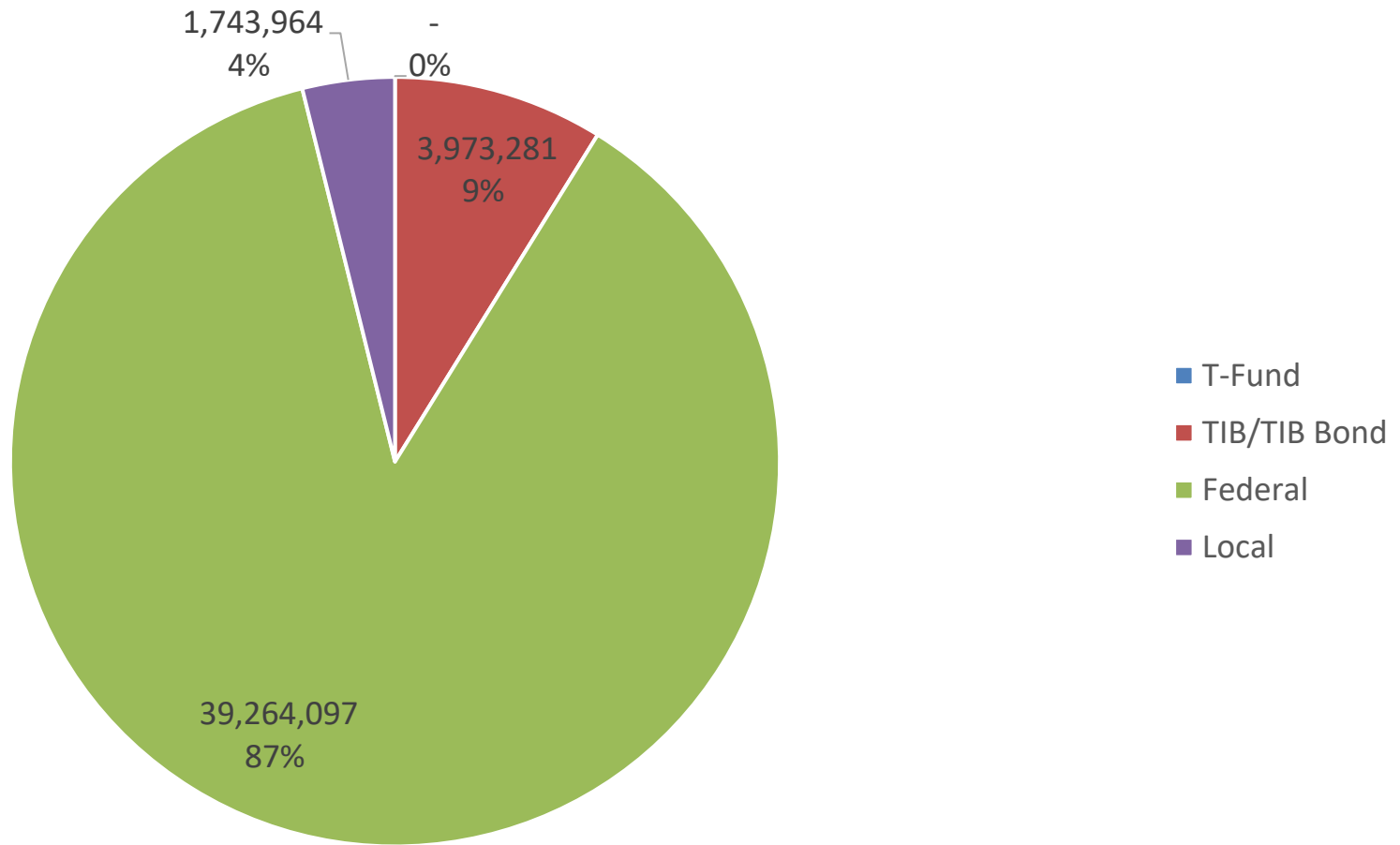




- T-Fund
- TIB/TIB Bond
- Federal

# FY2025 Budget for the State Highway Bridge Program by Funding Source





# FY2025 Budget for Town Highway Bridge Program by Funding Source



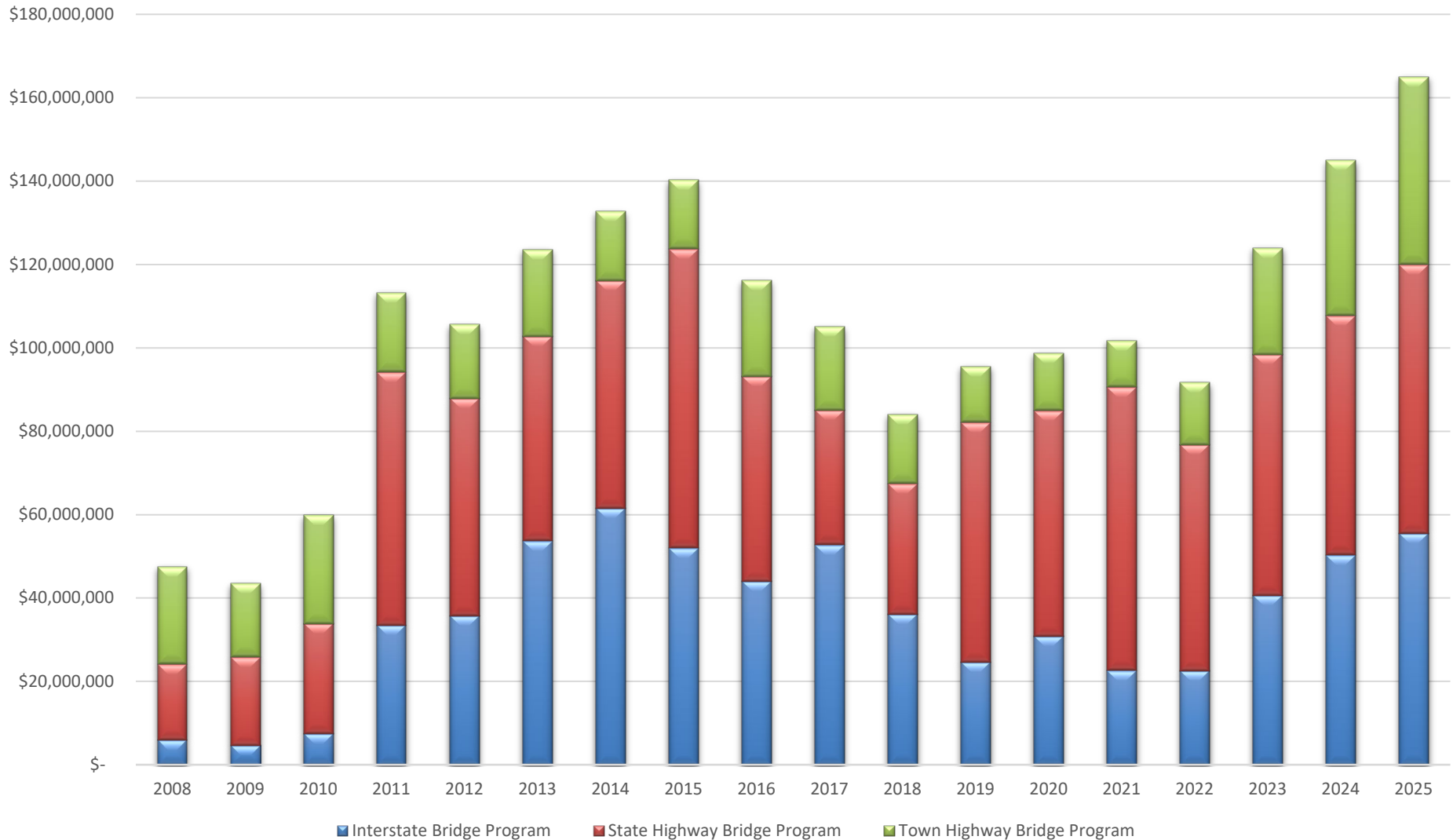
## Structures Program Budget FY2025

- \$165.0 million for bridges
- 155 Projects Funded
- 22 Emergency Projects
- 57 Projects Funded for Construction
- Spending increased \$20M from SFY 2024 (+12%)



# Program Funding Trends

Program Funding History





# Interstate Bridge Program FY2025 (Tab 5B)

**\$55.5 Million**

26	Projects funded
8	Projects funded for Construction (1 Bi-State Project Vermont/New Hampshire on I-89)
10	Bridge Maintenance and Preservation projects

## Interstate Bridge Program Summary:

- Spending is up \$5.2 Million (+9%) from last year
- Rehabilitation of Bridges 26 N&S on I 89 in Royalton over VT 107, NECR, and the White River to spend \$9.0M in FY25
- Rehabilitation of Bridges 21 N&S on I 91 in Westminster to spend \$9.0M in FY25
- Replacement of Bridge 29 in Richmond on US 2 over I 89 will spend \$8.2M in FY25
- Springfield I-91 to spend \$2.25M in FY25 in PE. Project will replace bridge decks on Bridges 25 N&S; replace superstructures on Bridges 26 N&S; remove Bridges 27 N&S and relocate Toonerville Rail Trail to pass beneath Bridges 28 N&S; and replace Bridges 28 N&S.
- Lebanon NH – Hartford VT bridge on I-89 at exit 20 continues and will account for \$3M in spending in FY25
- Replacement of large culverts 96-3 N&S on I-91 in Lyndon to spend \$1.1M in FY25



Richmond IM 089-2(52)  
Bridge 29 on US 2 over I89

# Interstate Bridge 10G New Projects

- BARNET BM23703
  - Bridge maintenance for Bridge 71S on I-91
- HARTFORD BM23406
  - Bridge maintenance for Bridge 47C on I-91 (Exit Ramp)
- HARTFORD BM23405
  - Bridge maintenance for Bridge 47 N&S on I-91
- PUTNEY BM24201
  - Rehabilitation of Bridge 14N on I-91
- BURLINGTON BM24501
  - Rehabilitation of Bridge 147A on US 7
- BARNET BM24701
  - Rehabilitation of Bridge 121B on US 5
- ST. JOHNSBURY BM24704
  - Rehabilitation of Bridge 103E on US 2
- ST. JOHNSBURY BM24705
  - Rehabilitation of Bridge 103W on US 2
- HIGHGATE BM24801
  - Rehabilitation of Bridge 100S on I-89
- SWANTON BM24802
  - Rehabilitation of Bridge 97S on I-89
- DERBY BM24901
  - Rehabilitation of Bridge 113N on I-91
- FAIRLEE IM 091-2(95)
  - Rehabilitation of Bridge 56S on I-91
- WEATHERSFIELD BM24203
  - Rehabilitation of Bridge 19/19D on I-91

# Interstate Bridge 10G Expanded Costs

- **COLCHESTER NH 028-1(31)**

- This is a complex project that includes the replacement of Bridge 18A (US 2) over I 89 at Exit 17 and improvement to the interchange ramps. It also includes new signals. The increase in the estimate reflects current prices for materials and labor. (Increase from FY 24 is approx. \$10 million)

- **WATERBURY IM CULV(109)**

- The initial estimate for this project was low prior to scoping estimates. This will be the first time VTrans has ever taken on a wildlife crossing structure project of this magnitude and with the primary goal of providing wildlife passage to an area. A Federal Grant of \$3M for PE funds was awarded in December of 2023. The Agency will be applying for a Construction grant in the future. Increase in estimate reflects current prices for materials and labor. (Increase from FY 24 is approx. \$20 million)

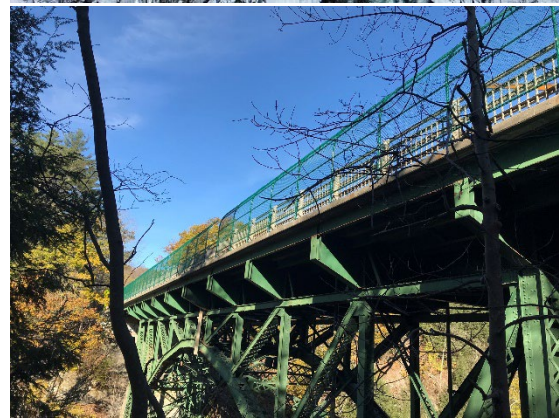
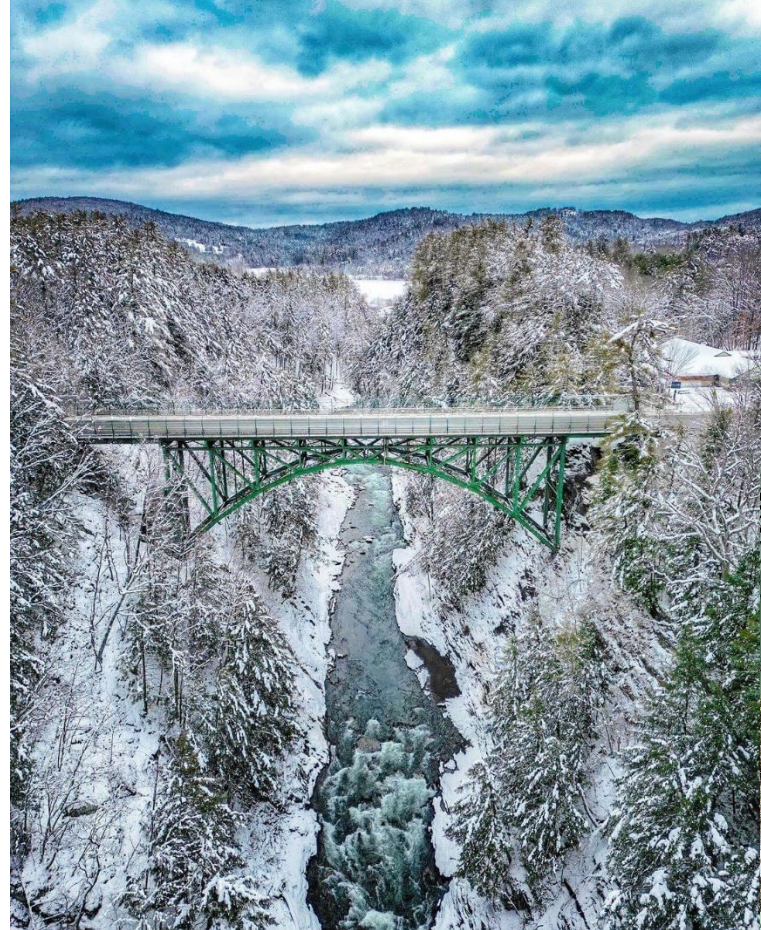
# State Highway Bridge Program FY2025 (Tab 5C)

## \$64.5 Million

76	Projects Funded
34	Projects funded for Construction
7	Bridge Preservation/Maintenance
2	VT-NH Connecticut River Bridges

### State Highway Bridge Program Summary:

- Spending is up \$7.1Million (+11%) from last year
- 42 projects added to the program for engineering/scoping includes 22 new permanent emergency bridge project replacements due to the July flooding
- Rehabilitation of Hartford Quechee Gorge Bridge to spend \$7.9 Million in FY25
- Readsboro Bridge 25 replacement on VT Route 100 to spend \$6.0 Million in FY25
- Pittsford Bridge 108 on US Route 7 to spend \$5.0 Million in FY25
- Royalton Bridge 24 replacement, NECR over VT 114 project spending \$3.7 Million in FY25
- Worcester Bridge 84 replacement on VT Route 12 to spend \$3.2 Million in FY25
- Searsburg Bridge 20 replacement on VT Route 9 to spend \$1.8 Million in FY25
- Fairfield Bridge 6 deck replacement on VT Route 36 to spend \$1.7 Million in FY25
- Rockingham Bridge 38 replacement on US Route 5 to spend \$1.4 Million in FY25



# Hartford NH 020-2(45) (Quechee Gorge) Bridge 61 on US 4

# State Highway Bridge 10G New Projects

- WALLINGFORD BF 0133(18)
  - Replacement or disinvestment of Bridge 15 on VT 155
- KILLINGTON NH CULV(120)
  - Replacement of Bridge 28 on US 4
- BRIDGEWATER NH CULV(121)
  - Replacement of Bridge 36 on US 4
- SUNDERLAND NH CULV(122)
  - Replacement of Bridge 19-7 on US 7
- CASTLETON STP CULV(123)
  - Replacement of Bridge 9 on VT 4A
- IRA STP CULV(124)
  - Replacement of Bridge 14 on VT 11
- LONDONDERRY STP CULV(125)
  - Replacement of Bridge 25 (Cattle Pass) on VT 11
- DORSET STP CULV(126)
  - Replacement of Bridge 58A on VT 30
- RUPERT STP CULV(127)
  - Replacement of Bridge 61 on VT 30
- CABOT BM23611
  - Rehabilitation of Bridge 89 on US 2
- COLCHESTER BM23503
  - Rehabilitation of Bridge 157 on US 7
- BENNINGTON BM24101
  - Rehabilitation of Bridge 16N on US 7
- RUTLAND TOWN BM24301
  - Rehabilitation of Bridge 19 E&W on US 4
- RUTLAND TOWN BM24302
  - Rehabilitation of Bridge 20 E&W on US 4

# State Highway Bridge 10G New Projects

- GROTON BM24702
  - Rehabilitation of Bridge 35 on US 302
- ESSEX TOWN STP CULV(148)
  - Replacement of Bridge 11 on VT 2A
- ESSEX TOWN STP CULV(149)
  - Replacement of Bridge 2 on VT 15
- JERICHO STP CULV(150)
  - Replacement of Bridge 6A on VT 15
- ESSEX TOWN NH CULV(151)
  - Replacement of Bridge 17-A on VT 289
- WASHINGTON ER P23-1(669)
  - Replacement of Bridge 15 on VT 110
- WOODBURY ER P23-1(653)
  - Replacement of culvert on VT 14
- PLYMOUTH ER P23-1(333)
  - Replacement of Bridge 108 on VT 100
- BRIDGEWATER ER P23-1(302)
  - Replacement of Bridge 116 on VT 100
- PLYMOUTH ER P23-1(328)
  - Replacement of Bridge 7 on VT 100A
- MT. HOLLY ER P23-1(334)
  - Replacement of Bridge 11 on VT 155
- PLYMOUTH ER P23-1(317)
  - Replacement of Bridge 9 on VT 100A
- PLYMOUTH ER P23-1(327)
  - Replacement of Bridge 4 on VT 100A
- RIPTON ER P23-1(322)
  - Replacement of Bridge 13A on VT 125



# State Highway Bridge 10G New Projects

- BROOKFIELD BM24603
  - Repair of Bridge 2 (Brookfield Floating Bridge)
- READING ER P23-1(404)
  - Replacement of Bridge 12 on VT 106
- LUDLOW ER P23-1(340)
  - Replacement of Bridge 23 on VT 103
- LUDLOW ER P23-1(341)
  - Replacement of Bridge 24 on VT 103
- BERLIN ER P23-1(636)
  - Replacement of Bridge 63 on VT 12
- BROOKFIELD ER P23-1(698)
  - Replacement of culvert on VT 14
- PLYMOUTH ER P23-1(332)
  - Replacement of Bridge 112 on VT 100
- CHELSEA ER P23-1(440)
  - Replacement of Bridge 13 on VT 110
- TUNBRIDGE ER P23-1(442)
  - Replacement of Bridge 5 on VT 110
- CHESTER BM24202
  - Rehabilitation of Bridge 14 on VT 103
- VERSHIRE ER P23-1(406)
  - Replacement of Bridge 11 on VT 113
- LONDONDERRY ER P23-1(225)
  - Replacement of culvert on VT 100
- CAVENDISH ER P23-1(233)
  - Replacement of Bridge 5 on VT 131
- LONDONDERRY ER P23-1(228)
  - Replacement of culvert on VT 100

# State Highway Bridge 10G Completed Projects

- Cambridge BM22802
  - Rehabilitation of Bridge 17 on VT 108
- Granville BM20407
  - Rehabilitation of Bridge 159
- Killington BF 020-2(50)
  - Replacement of Bridge 30 on US 4
- Killington BF 020-2(42)
  - Replacement of Bridge 33 on US 4
- Ludlow BF 013-3(16)
  - Replacement of Bridge 102 on VT 100
- Middlebury ER P20-1(503)
  - Permanent Repairs to small culvert on VT 116
- North Hero-Grand Isle BHF 028-1(26)
  - Replacement of Bridge 8 on US 2
- Plymouth STP DECK(52)
  - Deck replacement of Bridge 107 on VT 100
- Randolph BM20408
  - Rehabilitation of Bridge 37 on VT 14
- Richford ER P20-1(806)C/2
  - Replacement of Bridge 30 on VT 105
- Rockingham NH CULV(66)
  - Replacement of Bridge 6 on VT 103
- Rockingham BM20204
  - Rehabilitation of Bridge 41 on US 5

# State Highway Bridge 10G Expanded Costs

- GRANVILLE BM20407 – Rehabilitation of Bridge 159
  - Initial estimate was low and programmed 3 years ago. The actual estimate for the repair was reasonable. Increase in estimate reflects current prices for materials and labor. (Increase from FY 24 is approx. \$140,000)
- HARTFORD (QUECHEE) NH 020-2(45) – Rehabilitation of Quechee Gorge Bridge
  - Project was readvertised and we made changes to the plans in hopes that we would have more competition and lower bids. This did not happen, and we decided to move forward with the low bid which was higher than our estimate. (Increase from FY 24 is approx. \$10 million)
- RANDOLPH BM20408 – Rehabilitation of Bridge 37
  - Initial estimate was low and programmed 3 years ago. The actual estimate for the repair was reasonable. The increase in cost was reasonable but there was more damage than we thought and added extra work to the project. (Increase from FY 24 is approx. \$400,000)

# Town Highway Bridge Program FY2025 (Tab 14)

**\$45.0 Million**

<b>53</b>	Projects funded
<b>15</b>	Projects funded for Construction
<b>1</b>	VT-NH Connecticut River Bridges funded for Construction

## Town Highway Bridge Program Summary:

- Up \$7.8M (+17%) from last year
- Brattleboro – Hinsdale to spend \$4.2M this summer on the replacement of the existing twin truss bridges on NH 119, over the Connecticut River with a new structure approximately 1800-feet long
- Construction funding for bridges in several towns:
  - Hartford – Replacement of Bridge 7 on TH-6 with a new alignment, \$7.0M in FY25
  - Grafton – Replace Bridge 20 on FAS-0125 in Grafton over the Saxtons River, \$4.7M in FY25
  - Bennington – Replacement of Bridge 6 on VT-9 over the Walloomsac River, \$3.0M in FY25
  - Westminster – Rehabilitation of Bridge 5 on FAS 0126 over the Saxtons River, \$2.5M in FY25
  - Stowe – Replace Bridge 48 and Bridge 51 on TH42 over the Miller Brook, \$2.4M in FY25
  - Northfield – Replacement of Bridge 60 on VT-12 over the Dog River, \$2.3M in FY25
  - Chester – Replacement of Bridge 62 on TH18 over the Williams River, \$1.6M in FY25
  - Springfield – Replacement of Bridge 61 on VT-11
  - Ludlow Village – Replacement of Bridge 57 (Truss) on TH 324 with a pedestrian bridge
  - Jericho – Replacement of Bridge 15 on FAS 0209 over Mill Brook

# Brattleboro – Hinsdale Construction Update

---

- New 1,800-foot bridge will span over the Railroad, Barrows & Fisher tank farm, and the Connecticut River connecting VT-142 to NH-119
- \$61.2 million Construction project: Cost Split (VT 20%/NH 80%)
- Project final completion date pushed to **Summer 2025** from **October 25, 2024**
  - Pushed due to complications with VT Pier and NH Pier Cofferdam construction
    - Construction of VT Pier cofferdam underway
- All NH Piers Complete. Construct VT Pier, Winter/Spring 2024
- Finish setting superstructure steel, Winter/Spring 2024
- Finish superstructure construction, Summer/Fall 2024.
- Finish VT bridge approach and construction of VT-142/VT-119 intersection, Summer/Fall 2024
- Transfer Traffic to new Bridge, Winter/Spring 2025.
- VT Pier situated at the center Barrows & Fisher property: Tank relocation cost of \$6.1 million. Tank Relocation Work 95% complete.
- **Brattleboro – Hinsdale BF 2000(34)** project has been programmed for engineering to rehabilitate the existing Anna Marsh Bridge and Charles Dana Bridge for bicycle and pedestrian traffic (2026 – 2027)



# Brattleboro – Hinsdale



# Town Highway Bridge 10G New Projects

- LOWELL ER P20-1(908)
  - Storm Damage Repair
- WESTMINSTER BF 0126(14)
  - Rehabilitation of Bridge 5 on FAS 0126
  - This project was originally the Westminster BF 0126(13) project. This was closed as it was determined that the condition of the bridge was a lot more severe than we anticipated for the rehabilitation project.

# Town Highway Bridge 10G Completed Projects

- WESTMINSTER BF 0126(13)
  - Rehabilitation of BR 5 on FAS Route 126

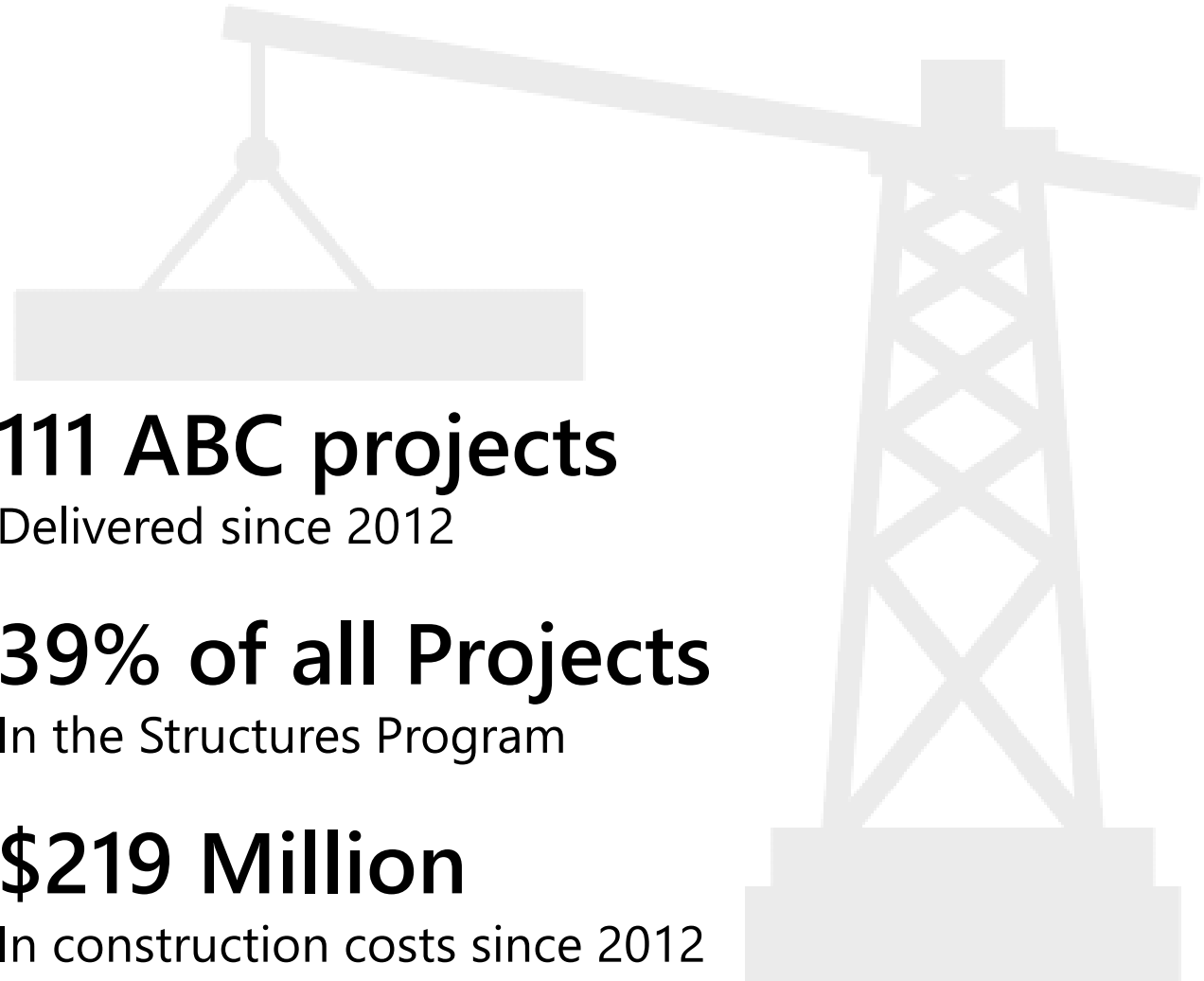
We opened this project, and we are re-designing the bridge to be a full replacement.

# Town Highway Bridge 10G Expanded Costs

- Brattleboro BF 2000(28) – Replacement of Br 54 on TV 9
  - Increase in cost reflects updated scope and fees from our consultant for their work and a more refined construction estimate. (Increase from FY 24 is approx. \$7 million)
- Burlington-Winooski BF RAIZ(2) – Replacement of Br 150 on US 7
  - Increase in cost reflects updated scope and fees from our consultant for their work along with a more refined construction estimate. (Increase from FY 24 is approx. \$15 million)
- POULTNEY BF 0145(13) – Rehabilitation of Br 4 on VT 31
  - Increase in cost reflects updated scope and fees from our consultant for their work and a more refined construction estimate. (Increase from FY 24 is approx. \$4 million)



# Accelerated Bridge Program



**111 ABC projects**

Delivered since 2012

**39% of all Projects**

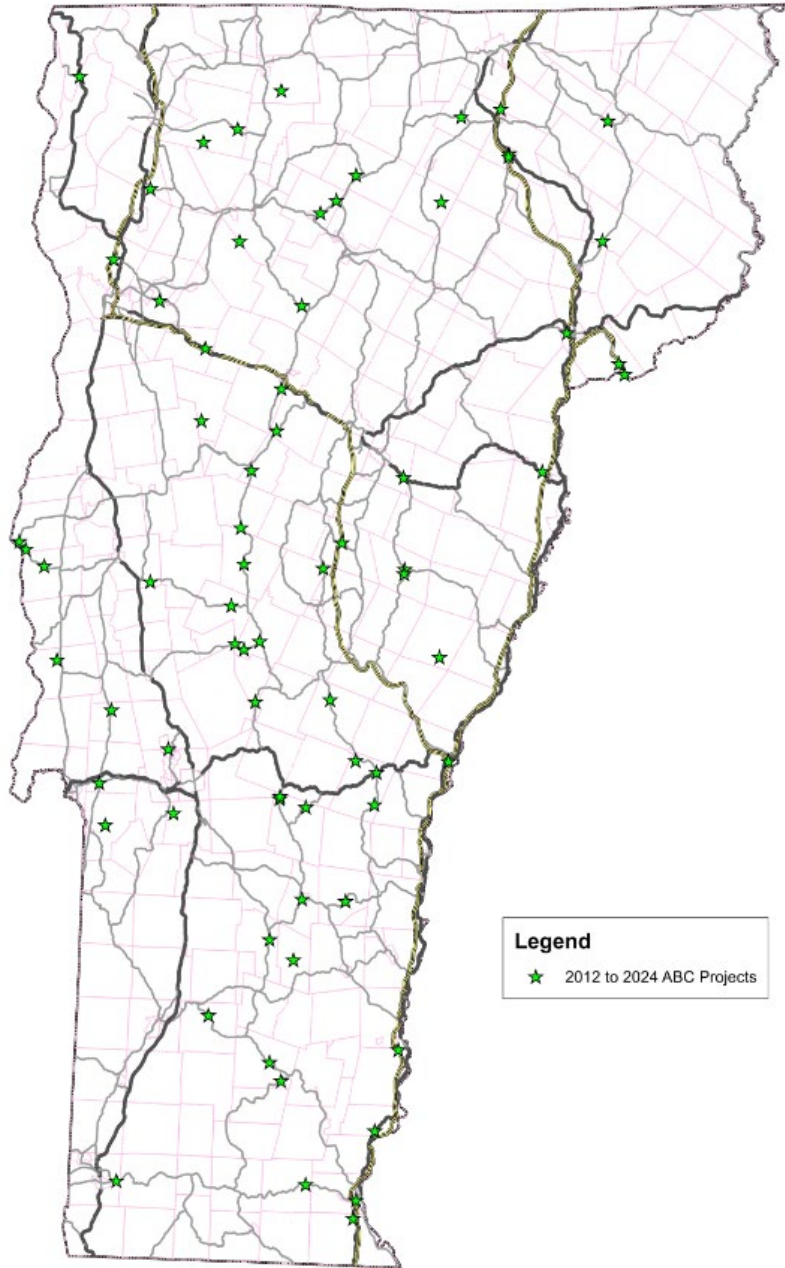
In the Structures Program

**\$219 Million**

In construction costs since 2012

**95% on time**

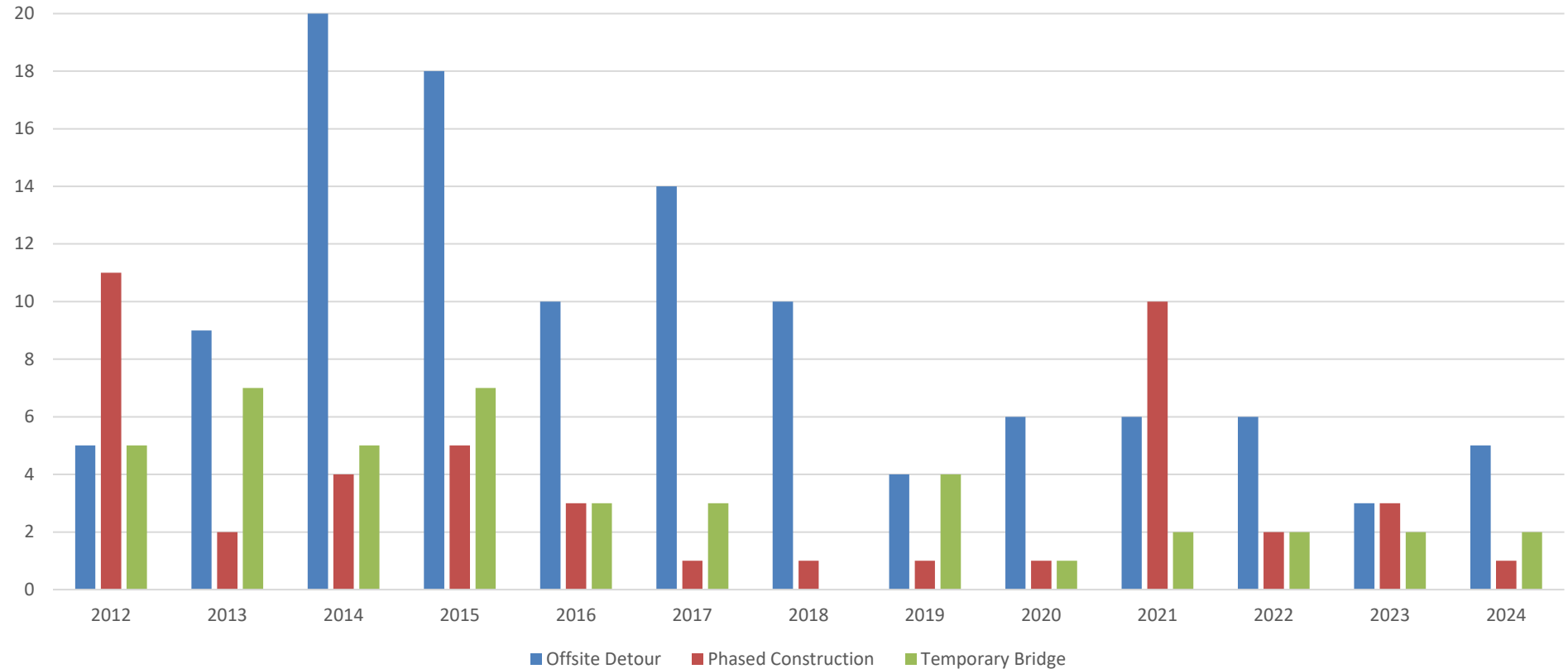
Bridge openings



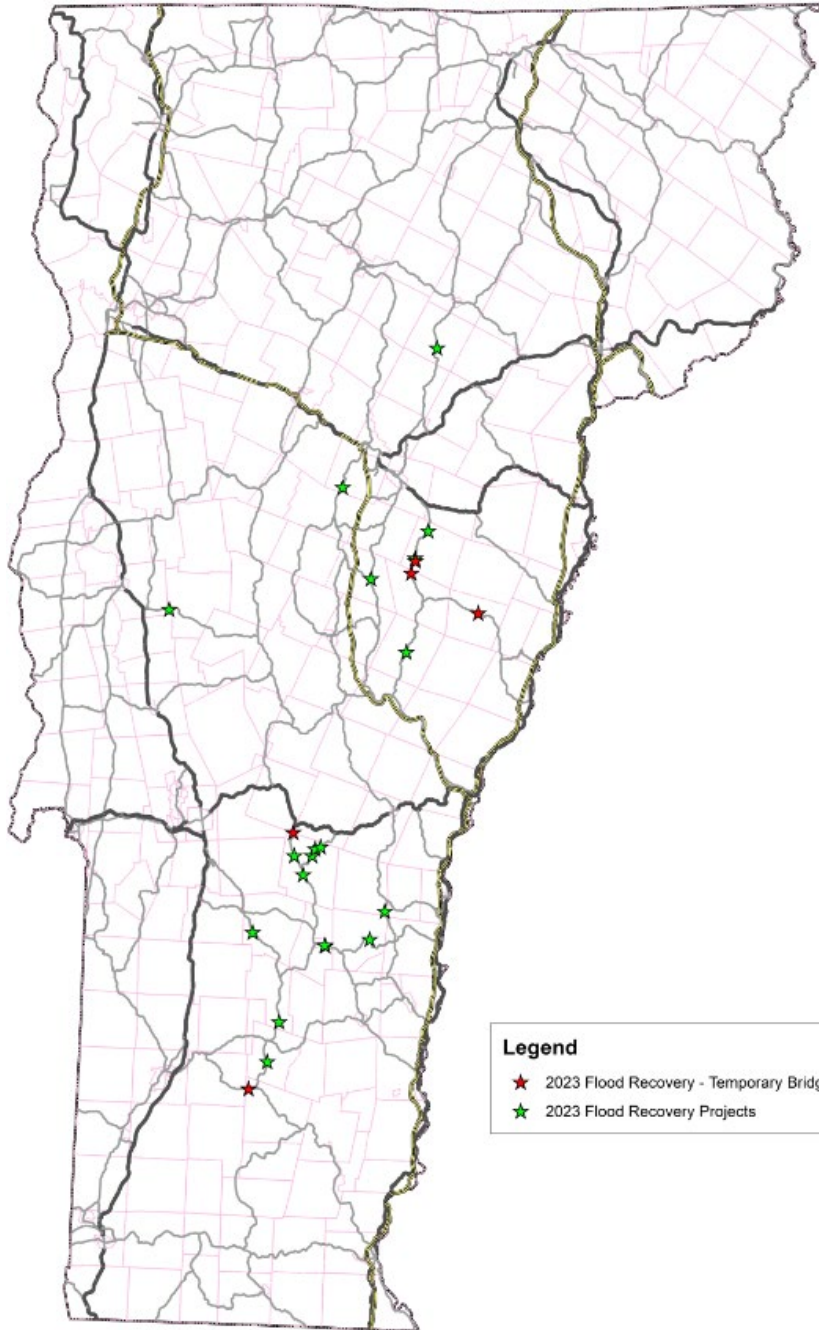
# ABC Project Map

---

# Road Closures Summer 2024



	PROJECT NAME	PROJECT NUMBER	ROUTE	Construction	Duration	Scope
2024	CLARENDON	BO 1443(55)	C3039	Conventional	Construction Season	Bridge Rehabilitation
2024	COVENTRY	BF 0251(49)	VT-14	Accelerated	3 Days	Culvert Replacement
2024	ROYALTON	BF 0147(29)	VT-14	Accelerated	3 Weeks	Full Bridge Replacement
2024	HARTFORD	BO 1444(60)	C2006	Conventional	Construction Season	Full Bridge Replacement
2024	FAIRFIELD	STP DECK(51)	VT-36	Conventional	28 Days	Deck Replacement



# 2023 Flood Recovery Project Map

---

# 2023 July Flooding

**Vershire  
Bridge 13 on  
VT 113 Before  
and After  
(Installation of  
a Temporary  
Bridge)**



**Tunbridge  
Bridge 6 on VT  
110 Before and  
After (Replaced  
with a new box)**



# Jamaica Bridge 42 on VT 30



# Ludlow Bridge 102 on VT 100



# Before and After Pictures Projects Completed Projects 2023



**Killington Bridge 33 on US 4 Before**



**Killington Bridge 33 on US 4 After**



**Killington Bridge 30 on US 4 Before**



**Killington Bridge 30 on US 4 After**



**North Hero (Mother's Bridge) Bridge on US 2 Before**



**North Hero (Mother's Bridge) Bridge on US 2 After**



**Plymouth BR 107 on VT 100 Before**



**Plymouth BR 107 on VT 100 After**



**Poultney BR 7 on Town Highway 6 Before**



**Poultney BR 7 on Town Highway 6 After**



# Program Delivery Risk Registry

- Concrete Producers
  - Not willing to provide costs to Contractors for VTrans projects
- Contractors
  - Nationwide shortage of Laborers
  - Vermont Contractors are spread thin
  - Lack of competition results in higher project contractor bids especially in Southern Vermont
- Designers
  - Design firms including VTrans have difficulty hiring engineering staff

Carolyn Cota, P.E. | Structures Program Manager

Project Delivery Bureau | Structures

Vermont Agency of Transportation - Highway Division

219 North Main Street | Suite 201 Barre, VT 05641

e-mail: [Carolyn.Cota@vermont.gov](mailto:Carolyn.Cota@vermont.gov) phone number: (802) 917-4891

Questions?

