

Vermont Agency of Transportation

FY25 Budget Presentation Policy, Planning and Research Bureau

AMY H. BELL, BUREAU DIRECTOR

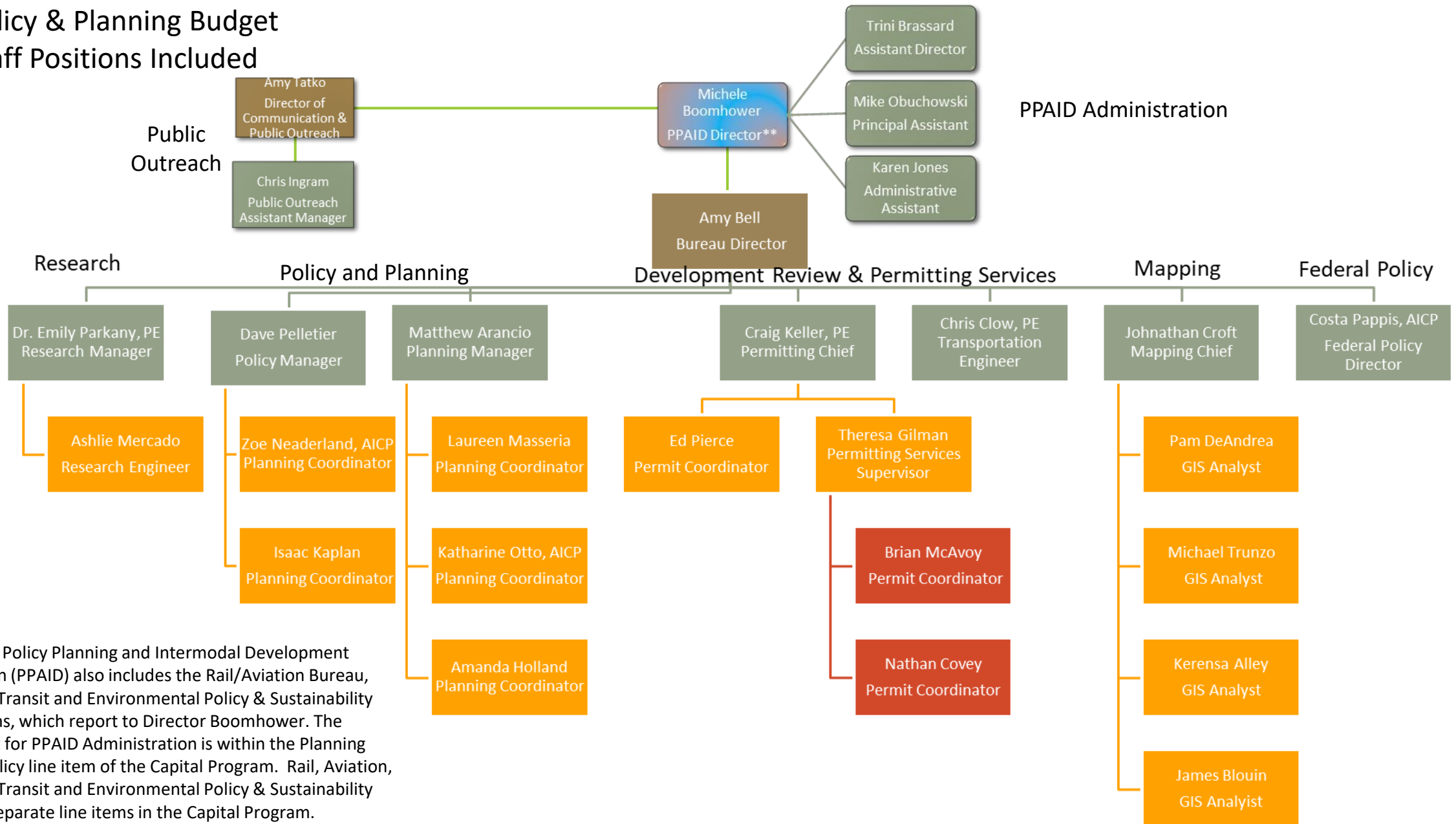
PRESENTATION TO HOUSE TRANSPORTATION COMMITTEE

1/25/24



Policy & Planning Budget

Staff Positions Included



** The Policy Planning and Intermodal Development Division (PPAID) also includes the Rail/Aviation Bureau, Public Transit and Environmental Policy & Sustainability Sections, which report to Director Boomhower. The budget for PPAID Administration is within the Planning and Policy line item of the Capital Program. Rail, Aviation, Public Transit and Environmental Policy & Sustainability have separate line items in the Capital Program.

Section Activities

Policy Planning & Intermodal Development Division Administration

- Division Director's Office and Administrative Support
- Operational costs

Policy & Planning Section

- IJIA Implementation (mandatory planning requirements, rulemaking, support for Highway and Rail & Aviation Bureau programs)
- Federal bill review monitoring and analysis
- Transportation Equity Framework Development and Implementation
- Legislative monitoring, bill review management, support and studies
- Agency Strategic Plan
- Cross-border initiatives and international agreements implementation
- Participation in AASHTO, NASTO and NGA policy development
- Better Connections Grant Program
- Long Range Transportation Plan
- Modal Plans (Rail, Park & Ride, Freight, Aviation, Transit, & Active Transportation Plans)
- Federal Discretionary Grant Applications
- Corridor Planning
- Travel Demand Model and Big Data rollout

Public Outreach

- Social Media and Media Management, VTransparency, VTrans Website
- Public outreach during construction and year-round public education



Section Activities

TRANSPORTATION PLANNING INITIATIVE & MPO COORDINATION

- Regional Planning Commissions and the Chittenden County RPC/MPO
- Cooperation and coordination between VTrans, RPCs and Municipalities
- Regional input to project prioritization
- Local transportation planning and technical assistance
- Road, bridge and culvert inventories, Municipal Roads General Permit support

Mapping Section

- Town Highway Maps and Mileage Certifications
- Federal Highway and National Highway System Data Management and Classification
- Cartography and GIS Spatial Analysis Services
- Town highway additions, reclassification and discontinuance review

Research Section

- Federally mandated research program
- Two research projects completed this year, nine active projects
- Technical Transfer through VTrans Research Symposium substitute report & newsletters
- Transportation Research: Qualified Researcher List expanded to five universities & seven consultants
- TRB, NCHRP participation, UTC collaboration and FHWA Pooled Funds

Development Review & Permitting Services

- Permits to Work in State Highway Right-of-Way (Section 1111 Permit)
- Act 250 Application Review
- Act 145 (2014) Transportation Impact Fee management
- Section 1111 Automation Project

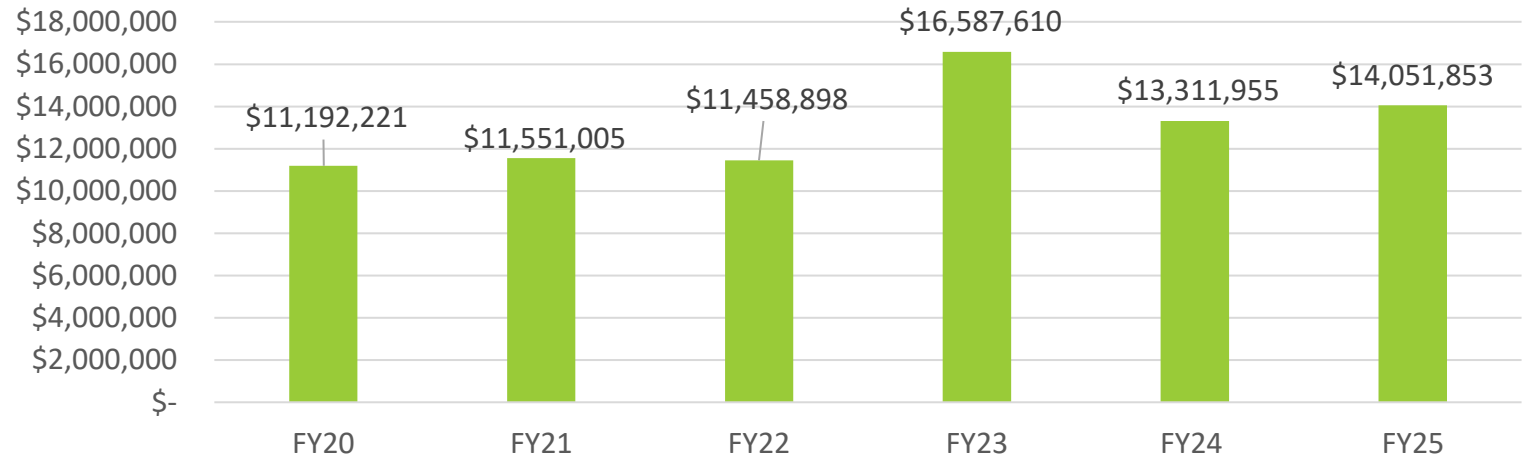


Funding Sources	<i>SFY 2024 As Passed</i>	<i>SFY 2025 Proposed</i>	<i>% Change</i>
State Transportation Fund	\$ 3,260,534	\$ 3,137,901	-3.9%
Federal Funds	\$ 9,989,315	\$ 10,797,449	7.5%
Interdepartmental Transfer	\$ 62,146	\$ 116,503	46.7%
Totals	\$ 13,311,995	\$ 14,051,853	5.3%

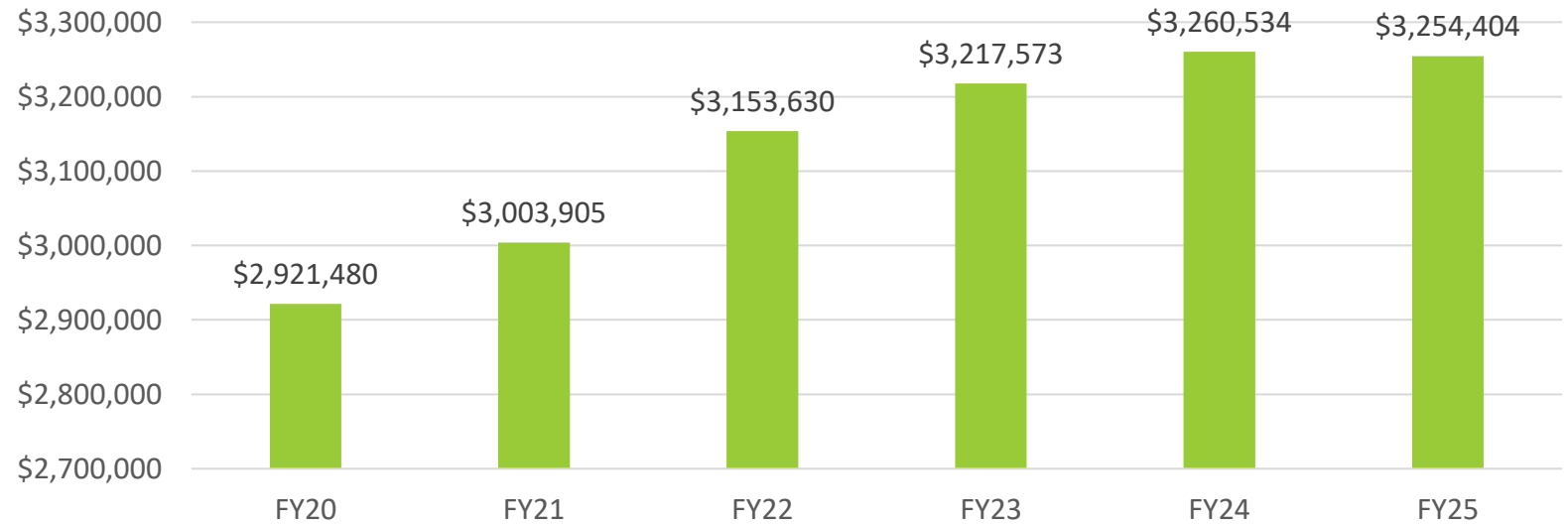
POLICY, PLANNING & RESEARCH SFY25 PROPOSED
 FUNDING SOURCES

Policy, Planning & Research Budget: 5-Yr Historical w/FY25 Proposed

5-yr As Passed /FY25 Proposed

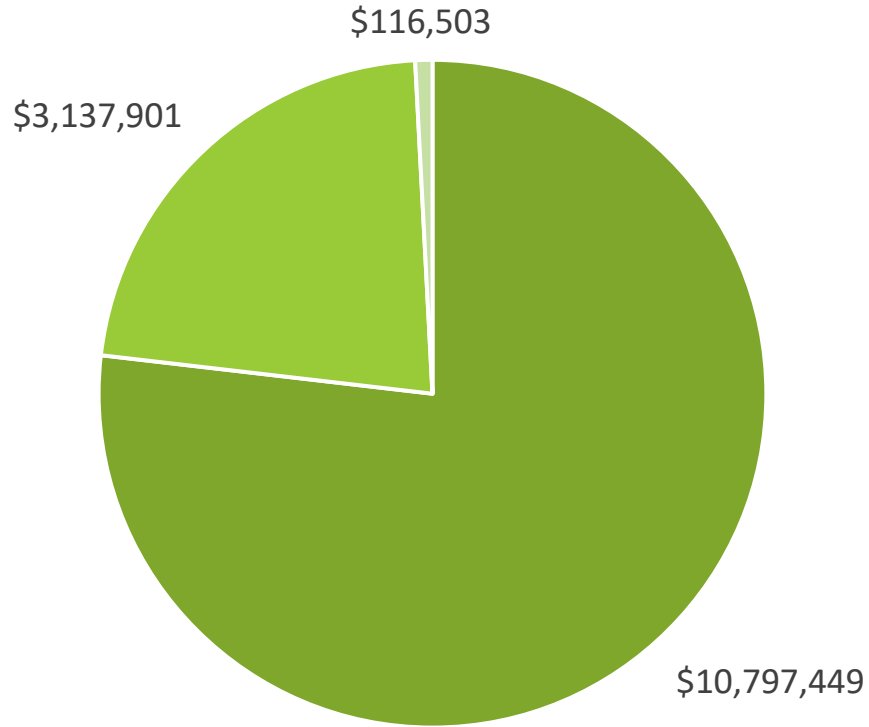


State Funds Only w/ FY25 Proposed



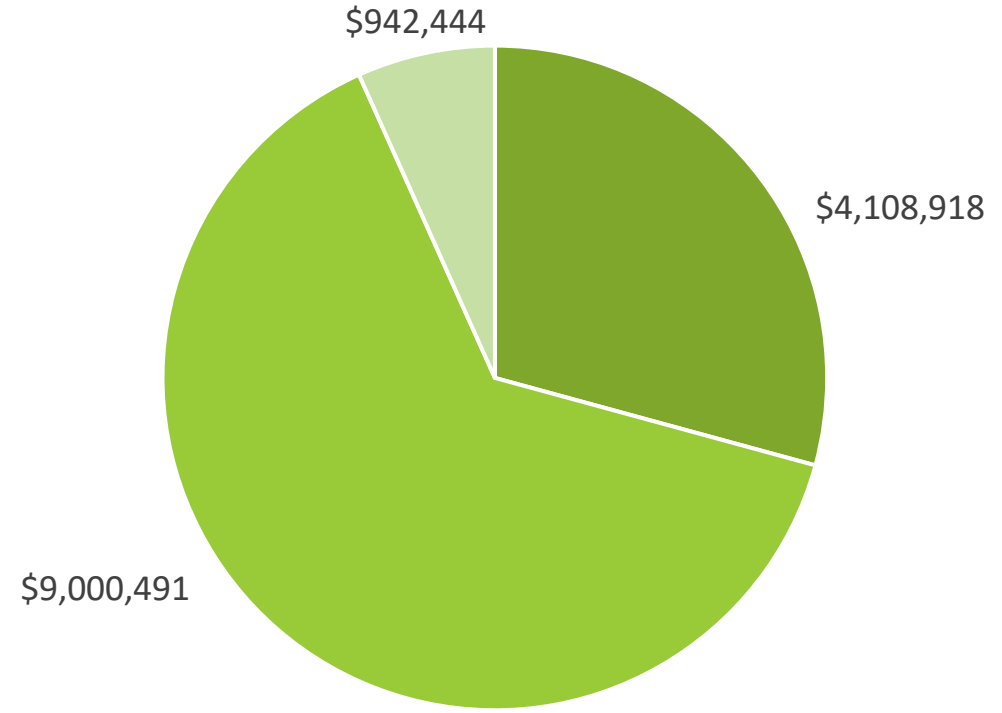
FY25 Budget Breakdown: \$14.051M

Funding Profile



■ Federal ■ State ■ Interdepartmental Transfer

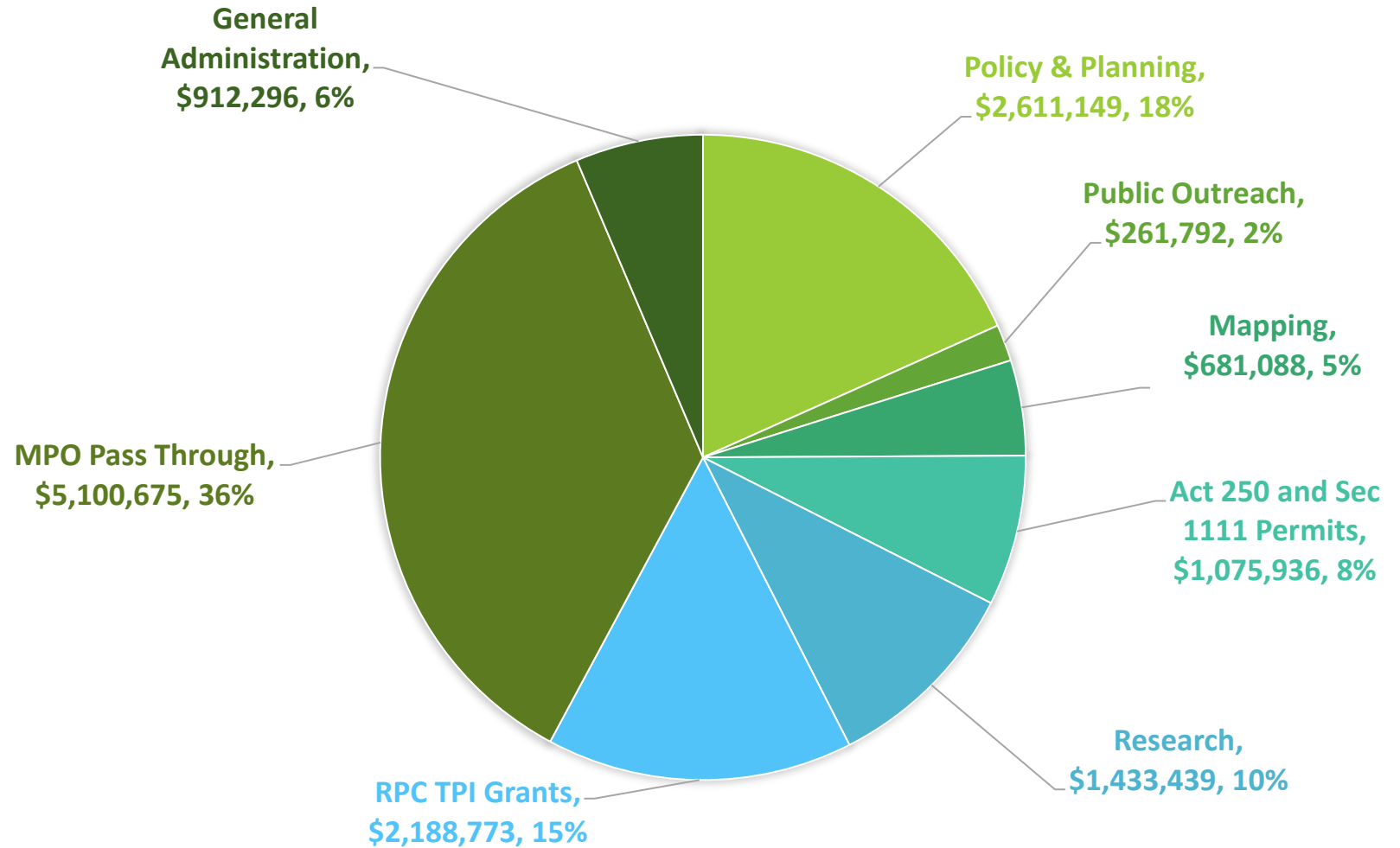
Spending Profile



■ Personal Services ■ Grants ■ Operating

Policy Planning & Research Proposed FY25 By Section:

**POLICY & PLANNING BREAKOUT BY SECTIONS
SFY 25 PROPOSED BUDGET**



Amy H. Bell, Bureau Director
Policy, Planning & Research Bureau
Policy, Planning & Intermodal Development Division
VT Agency of Transportation
Amy.Bell@vermont.gov
(802) 279-0783

