



Better Connections Grant Program

House Committee on Transportation – February 15, 2023

Matthew Arancio VTrans | Richard Amore ACCD

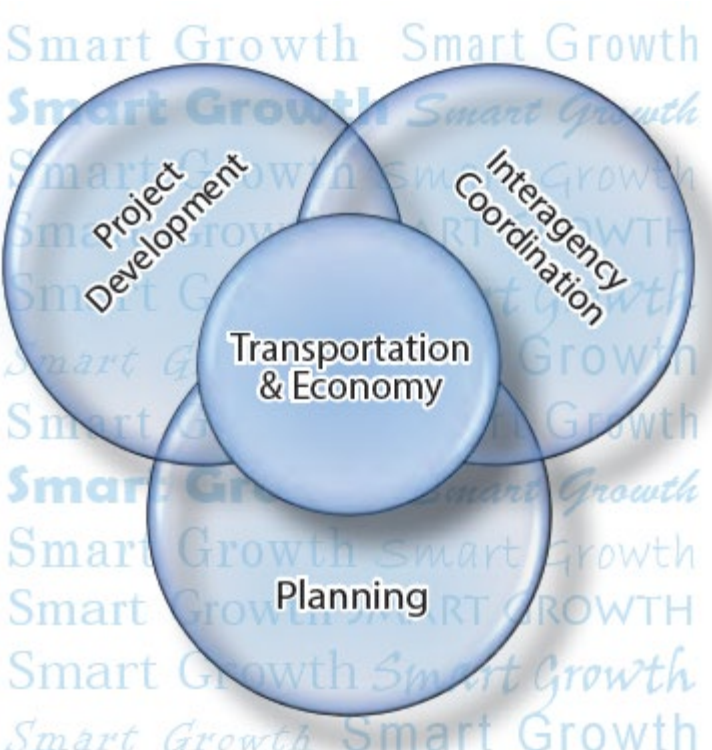


Recommendation: Develop an interagency competitive planning grant program

Strengthening Vermont's Economy by Integrating Transportation and Smart Growth Policy

Final Report

September 2013



GRESHAM
SMITH AND
PARTNERS



Smart Growth America
Making Neighborhoods Great Together

Program Objectives

- **Help communities identify and prioritize their goals and projects**
- **Develop a roadmap to achieve their goals and move projects forward**
- **Link communities with public and philanthropic partners to implement their priority projects**



Program Organization

- **Bi-Annual Awards**
 - Study typically runs 18 months
- **Three (3) municipalities per cycle**
- **Municipality Lead**
 - RPC PM option
- **Lots of work!**
 - Big visions
 - Consultant Management
 - Community Engagement
 - Lots of Agency support



Program Funding

| Funding Source / (%) | Amount |
|--------------------------------------|-----------|
| AOT / FHWA SPR Funds (80%) | \$180,000 |
| ACCD / MPG Funds (10%) | \$20,000 |
| Local Cash Match (10%) | \$20,000 |
| ANR* / Clean Water Fund | \$90,000 |
| *Optional – up to \$30,000 / grantee | |

- **Truly an interagency partnership with funding available from three (3) sources** (and VDH in the past)
 - Max of \$97,500,000 per grantee
- **10% local match removes a barrier to entry**
 - Federal funds typically require 20%
- **Administered by VTrans**

ANR's Clean Water Fund



NOTE: This is an illustration of one possible scenario created to help the community visualize possibilities and create a platform for dialogue.

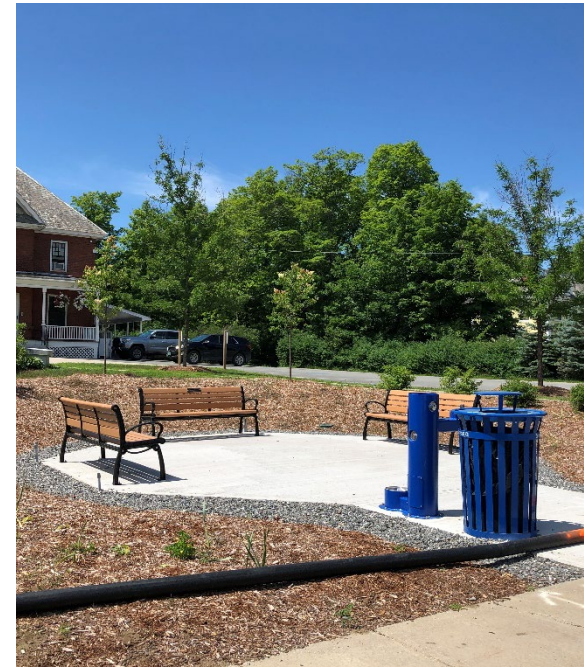
Dept. of Health's Quick Build Grants



Advisory Lane in Danville



Rail Trail Kiosk in Enosburg Falls



Pocket Park in Hyde Park

By The Numbers

- **FY21 Cycle Communities**
 - **Bethel** - accessibility
 - **Lyndonville** - consolidating village center
 - **Poultney** - “town to trails”

By the Numbers [2015-2021]

 **\$3.1 m**
in grant funds
requested

 **\$1.3 m**
in grant funds
awarded

 **\$177,500**
in local match
funds

 **18**
better
connections
grants awarded

Local Impact of Better Connections



MRV Active Transportation Plan



ACTIVE TRANSPORTATION FOR THE MAD RIVER VALLEY

Future Opportunities | Connection Typologies

Major On Road Connections

Minor On Road Connections

Minor Off Road Connections



Bike Lane

- Best for areas with high traffic or areas with high pedestrian activity
- Can be used for other purposes like emergency vehicle lanes or transit lanes
- May require additional signage and lighting for safety
- May require additional signage and lighting for safety
- May require additional signage and lighting for safety

Terrain Suitability



Paved Shoulder

- Best for areas with low traffic and low pedestrian activity
- May require additional signage and lighting for safety
- May require additional signage and lighting for safety
- May require additional signage and lighting for safety



Shared Lane

- Best for areas with low traffic and low pedestrian activity
- May require additional signage and lighting for safety
- May require additional signage and lighting for safety
- May require additional signage and lighting for safety



Sidewalk

- Best for areas with low traffic and low pedestrian activity
- May require additional signage and lighting for safety
- May require additional signage and lighting for safety
- May require additional signage and lighting for safety



Signed Route

- Best for areas with low traffic and low pedestrian activity
- May require additional signage and lighting for safety
- May require additional signage and lighting for safety
- May require additional signage and lighting for safety



Natural Surface Trail

- Best for areas with low traffic and low pedestrian activity
- May require additional signage and lighting for safety
- May require additional signage and lighting for safety
- May require additional signage and lighting for safety

Blueberry Lake Trail User Spending



MRV Active Transportation Plan

*“Working together is hard work,” said Josh Schwartz of the Mad River Valley Planning District, “but we did it for a larger purpose. We know that the foundation of planning work is **relationship building**. And this grant allowed us to **start building those relationships and learn how to work together.**”*

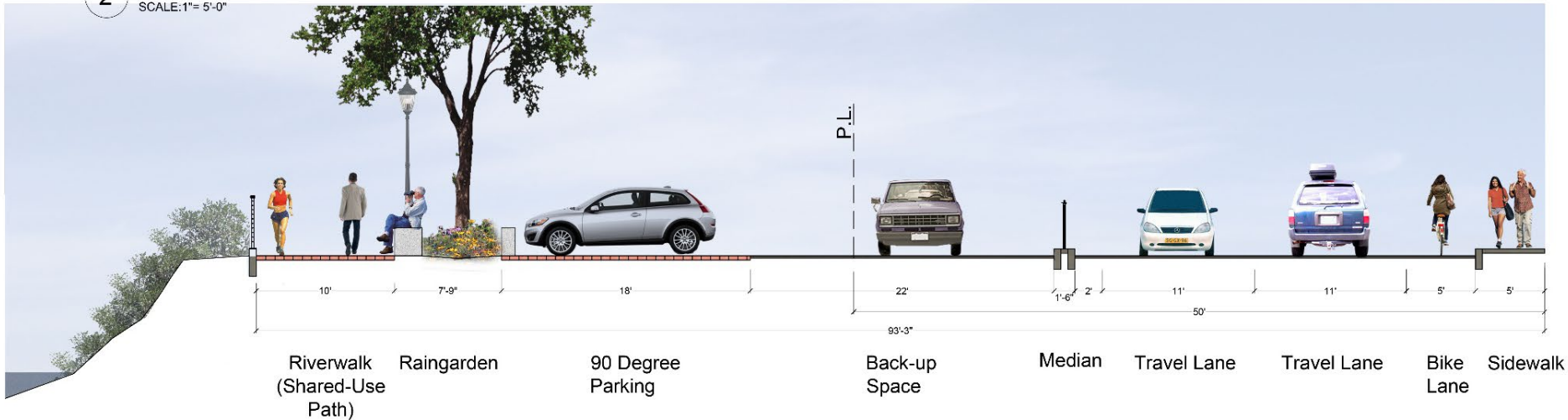
Springfield Main Street Master Plan



Views of Clinton Street before and after a road diet and the addition of a shared use path.

2 Section at Riverwalk - Alt.1

SCALE: 1" = 5'-0"



3 Section at Riverwalk

SCALE: 1" = 5'-0"

Springfield Main Street Master Plan

“This is the type of work we have wanted to see our communities do for decades but, frankly, there has never been enough money,” Rasmussen said. “The Better Connections program is critical because it is one of the few funding sources that gives people the resources to really engage the community and build consensus. People have always wanted to do it but there haven’t been the resources.”

Springfield Main Street Master Plan



Chester Village Revitalization Plan

Exploring a Vision | Streetscape Improvements



Chester Village Revitalization Plan



Island Pond Revitalization Master Plan

Join Us For a

What's working,
what's not?

walk
& talk

What do you see
for the future?

We want to
hear from you!

Tell us what
you think!

in Island Pond

VILLAGE REVITALIZATION MASTER PLAN

DATE **Monday, October 30** TIME **4:00 - 5:00 PM** LOCATION **Meet at Town Hall**

As part of the Island Pond Village Revitalization Master Plan please join the Town & Consultant Team for a Walk & Talk. We will be leading three groups around the Village to look at specific issues that include Infrastructure and Transportation, Village Revitalization, and the Lakefront.

Come share your experiences, knowledge, and ideas with the Town & Consultant Team!

Walk & Talk Groups

GROUP ONE

**Getting Around
Island Pond**

GROUP TWO

**The Greening of
Island Pond**

GROUP THREE

**The Building Blocks
of the Village**

For more information, contact Lucy Thayer at:
(802) 388-3011 or lucy@landworksvt.com

Presented and organized by LandWorks, Resource Systems Group, Engineering Ventures, Doug Kennedy Advisors, and UK Architects

The Island Pond Village Revitalization Master Plan Project is funded through a grant from Better Connections administered by VTrans in partnership with the Agency of Commerce and Community Development.



Island Pond Revitalization Master Plan



Downtown Windsor's Plan

Connecting the
RIGHT SIDE
OF THE TRACKS
A Plan for Windsor's Riverfront



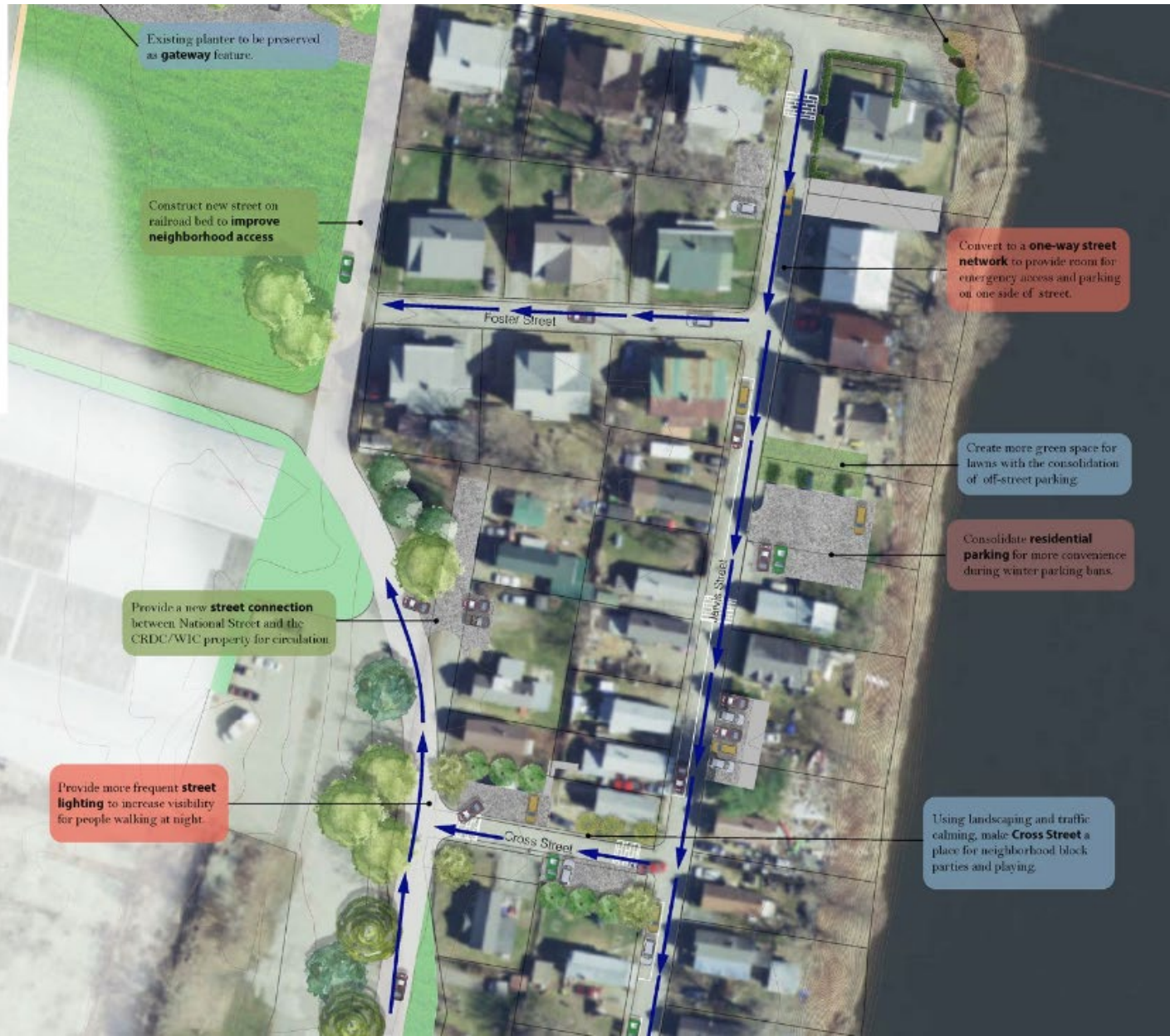
Downtown Windsor's Plan

A Livable Street for the Riverfront Neighborhood

Changes to the street network to address concerns about: **SAFETY** and emergency access **PARKING** off-street during winter **PLACES** to enjoy the neighborhood **CONNECTIONS** to the river and other destinations in Windsor.

Legend

- Proposed Vegetation
- Proposed Parking Areas
- Proposed Sidewalk
- Proposed Textured Pavement
- Proposed Circulation
- Property Lines
- 20' Contour Intervals



Enosburg Falls Vital Village Project



ENOSBURG FALLS VITAL VILLAGE PROJECT

"Nobody was talking to each other about how to maybe make the improvement. And our group put all those people together, got 'em into the room and made a plan." — Jim Cameron, Enosburg Falls volunteer

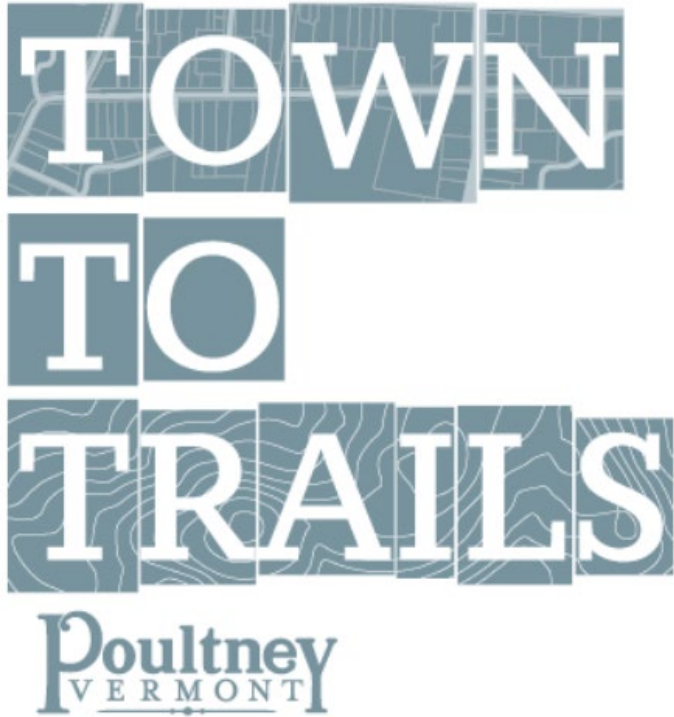


BETHEL FOR ALL

Bethel for All is here to make Bethel a more vibrant, accessible, connected and welcoming place for all.

We're creating a village accessibility action plan, and we need YOUR ideas to help shape Bethel's future.

Poultney Town to Trails Plan



Building Trails and Plans for a Thriving Economy



Contact Information

- **Matthew Arancio**

VTrans, Planning Manager

matthew.arancio@vermont.gov

802.793.7489

- **Richard Amore**

ACCD, Planning and Outreach Manager

richard.amore@vermont.gov

802.585.0061

- **Ethan Swift**

ANR, Environmental Program Manager

ethan.swift@vermont.gov

802.490.6141

<https://vtrans.vermont.gov/planning/projects-programs/better-connections>

And check out our local projects Story Map

<https://secure.accd.vermont.gov/betterconnections/projects/index.html>

Developments happen incrementally, but **great communities** happen **strategically.**



Thank You.

Better Connections
Program