

Multiunit and Community EV Charging Grant Programs



Bronwyn Cooke, Department of Housing and Community Development

House Transportation Committee
January 10th, 2024

Community Planning & Revitalization (CP&R)



"The Community Planning and Revitalization team uses a **collaborative, place-based approach** to **land-use planning and community development** that **empowers state and local leaders** to plan for and **build vibrant, inclusive, and resilient [places]** downtowns, villages, and neighborhoods."

Electric Vehicle Supply Equipment Grant

2014 - 2021

- \$3.5M (mostly Volkswagen settlement funds)
- 5 rounds of grant funding
- Invested in public Level 2 and DCFC to support local economic development in our community centers
- 23 public DCFC locations
- 36 public Level 2 locations



Multiunit Pilot | Program

2022

Goals

- Increase access to home charging for residents of multiunit housing.
- Test solutions that work for property owners and residents.

Eligibility

- 10 or more units on a tract or tracts of land
- Affordable or non-profit multiunit housing



Multiunit Pilot | Awards

- Awarded projects will provide new EV Charging access to 6,230 residents of affordable housing units
- Project locations across Bennington, Caledonia, Chittenden, Franklin, Grand Isle, Orleans, Washington and Windsor Counties
- 18 locations completed out of 39 awarded



Champlain Housing Trust, Trolley Barn

Vermont Community EV Chargers | Program

- March 2023 Selected Green Mountain Power to administer \$7M in new program funding in partnership with Department of Housing and Community Development.
- June 2023 Launched Level 1 & 2 incentive program for multiunit residences, workplaces, and community attractions.
- January 2024 Launched competitive grants for DCDC at community attractions

Vermont Community EV Chargers | Program

\$7M



PROGRAM	MULTIUNIT RESIDENTIAL		WORKPLACES		COMMUNITY ATTRACTIONS	
ELIGIBILITY	3 or more units		charging for employees		public parking	
EQUIPMENT INCENTIVE	Level 1 \$500/port	Level 2 \$3,000/port	Level 1 \$500/port	Level 2 \$3,000/port	Level 2 \$3,000/port	DCFC \$30,000/port
MAKE-READY INCENTIVE		Up to \$20,000		Up to \$20,000	Up to \$20,000	Up to \$30,000
TOTAL \$	\$2.7M		\$1.8M		\$360,000 & \$1.4M	

Vermont Community EV Chargers | Program

- Employers with less than 100 employees → 60% of workplace funds
- Multiunit properties with fewer than 20 units → 60% of multiunit
- Equity across counties → 10% county cap, excluding DCFC
- Equity across utility providers → 75% cap for GMP, excluding DCFC
- Affordable housing, non-profits and M/WBE → lower match requirements
- Applicant cap → \$100,000 for Level 1 and 2, \$640,000 for DCFC

Vermont Community EV Chargers | Program

- **Level 1 and 2 incentives are available to eligible applicants on a rolling basis**
 - Pre-application and pre-screen eligibility phone call
 - Connection to installer/contractor if needed
 - Submission of project estimate and site design
- **Approval of application → first funding payment dispersed**
- Installation
- Submission of project invoices/proof of completion → final funding payment dispersed

Vermont Community EV Chargers | Program

Pending Review	204
Under Review	107
Approved	18
Project Completed	0
Withdrawn/ineligible	10
TOTAL APPLICATIONS RECEIVED	339

Vermont Community EV Chargers | Program

	Incentive \$	Pipeline Max \$*	
Multiunit residential	\$2,700,000	\$3,111,000	-\$411,000
Workplace	\$1,800,000	\$3,043,600	-\$1,243,600
Community Attraction Level 2	\$360,000	\$2,244,500	-\$1,884,500
Community Attraction DCFC	\$1,440,000	TBD	

* Pipeline Max is an estimate based on the maximum incentive amount for the # of ports.

Vermont Community EV Chargers | Program

	Multiunit residential	Workplace	Community Attraction L2	Pipeline Max*	Over/Under County Cap**
Chittenden	\$1,570,600	\$1,508,400	\$268,600	\$3,347,600	\$ (2,861,600)
Washington	\$312,600	\$98,600	\$393,900	\$805,100	\$ (319,100)
Windham	\$263,000	\$306,000	\$210,000	\$779,000	\$ (293,000)
Windsor	\$322,000	\$128,000	\$274,600	\$724,600	\$ (238,600)
Lamoille	\$166,000	\$160,000	\$202,600	\$528,600	\$ (42,600)

* Pipeline Max is an estimate based on the maximum incentive amount for the # of ports.

** 10% county cap = \$486,000

Vermont Community EV Chargers | Program

	Multiunit residential	Workplace	Community Attraction L2	Pipeline Max*	Over/Under County Cap**
Franklin	\$128,000	\$196,000	\$46,000	\$370,000	\$116,000
Rutland	\$150,200	\$48,000	\$104,100	\$302,300	\$183,700
Grand Isle	\$26,000	\$24,000	\$242,600	\$292,600	\$193,400
Addison	\$72,000	\$142,100	\$78,000	\$292,100	\$193,900

* Pipeline Max is an estimate based on the maximum incentive amount for the # of ports.

** 10% county cap = \$486,000

Vermont Community EV Chargers | Program

	Multiunit residential	Workplace	Community Attraction L2	Pipeline Max*	Over/Under County Cap**
Orange	\$0	\$247,800	\$24,000	\$271,800	\$214,200
Caledonia	\$72,000	\$26,000	\$166,000	\$264,000	\$222,000
Bennington	\$28,600	\$128,700	\$74,000	\$231,300	\$254,700
Orleans	\$0	\$30,000	\$136,100	\$166,100	\$319,900
Essex	\$0	\$0	\$24,000	\$24,000	\$462,000

* Pipeline Max is an estimate based on the maximum incentive amount for the # of ports.

** 10% county cap = \$486,000

Vermont Community EV Chargers | Program

Competitive Grants for DCFC at Community Attractions

- January 15, 2024 Pre-applications
- April 1, 2024 Applicants meeting eligibility requirements will be invited by to complete full applications
- June 1, 2024 Full applications are due and will be competitively awarded based on the scoring criteria
- July 1, 2024 Applicants notified of award

Projects must be installed within 24 months of application approval

Vermont Community EV Chargers | Program

Competitive Grants for DCFC

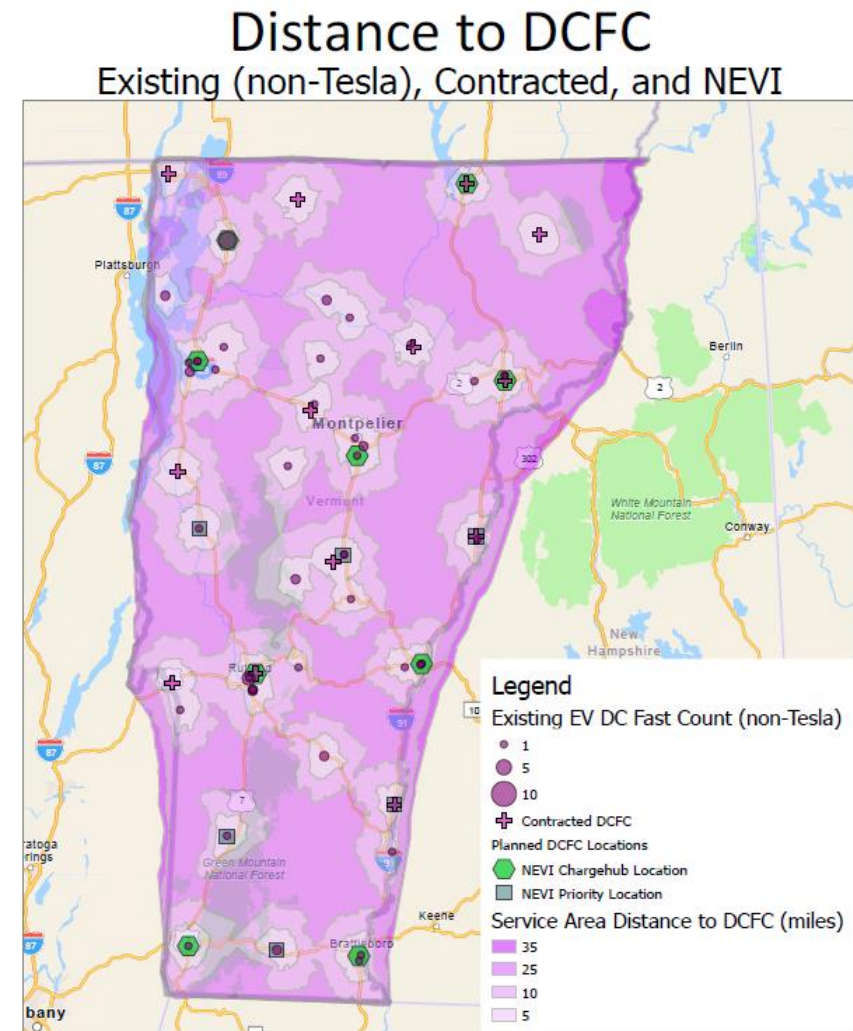
Eligibility

- Parking available to the public
- More than 10 miles from another DCFC

[Map](#)

Incentive

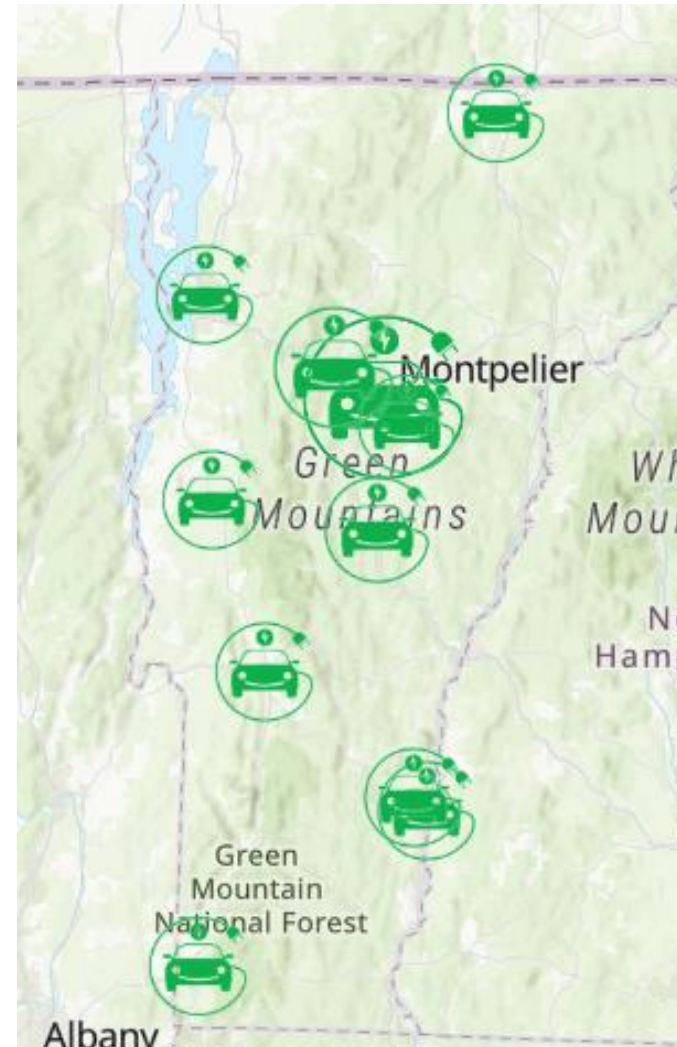
- \$160,000 project cap
\$30,000 per port
\$40,000 make ready



Vermont Community EV Chargers | Program

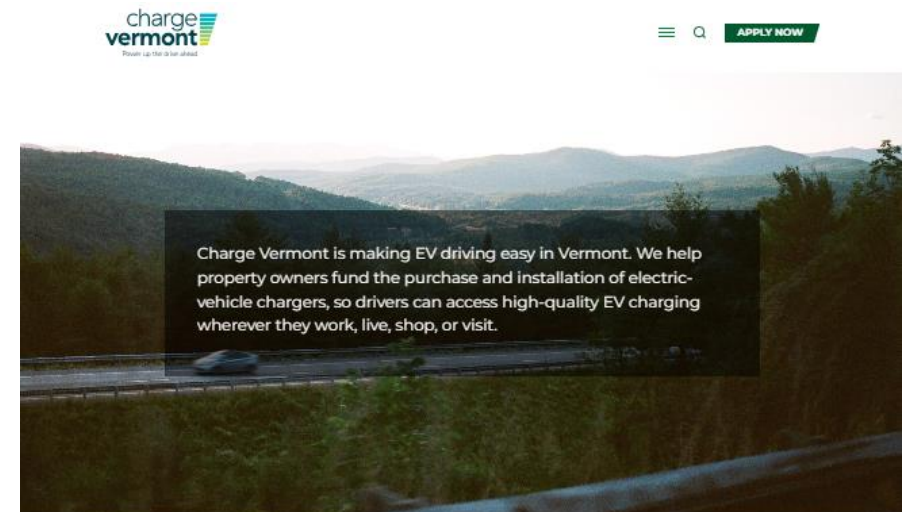
Public Charging at State Workplaces

- \$500,000 via MOU with BGS
- Level 2 chargers at 8+ locations
- Informed by State employee survey



Vermont Community EV Chargers | Program

- Branded website
- Project profiles
- EVSE planning and management resources



Getting an EV Charger in Vermont

Looking to add a charger at a business, multi-unit residence, or public attraction? Charge Vermont can help cover the costs. The program is open to customers of all electric utilities in Vermont. It's funded by the State of Vermont and administered by Green Mountain Power. Funding is limited, so don't wait.

[APPLY NOW](#)



Apply Now

Move quickly! State funding through Charge Vermont is limited.

[Start Here](#) →



Workplaces

Chargers are available to support employees who want to drive an electric vehicle to work.

[Learn More](#) →



Multi-Unit Residences

Charge Vermont helps fund and install chargers at apartment complexes, condominiums, and retirement communities.

[Learn More](#) →



Public Attractions

Get a charger for attractions such as recreation, entertainment, municipal offices, commercial buildings, schools, or non-profits.

[Learn More](#) →

Multiunit and Community EV Charging Grant Programs



info@chargevermont.com



Bronwyn Cooke, AICP (she, her)

Community Planning and Policy Manager
Community Planning + Revitalization

Bronwyn.cooke@vermont.gov