

VERRA
MOBILITY™

Vermont

House Transportation Committee Work Zone Pilot Legislation

April 10, 2024

Lewis Miller

Senior Vice President Global Operations
20 years of industry experience



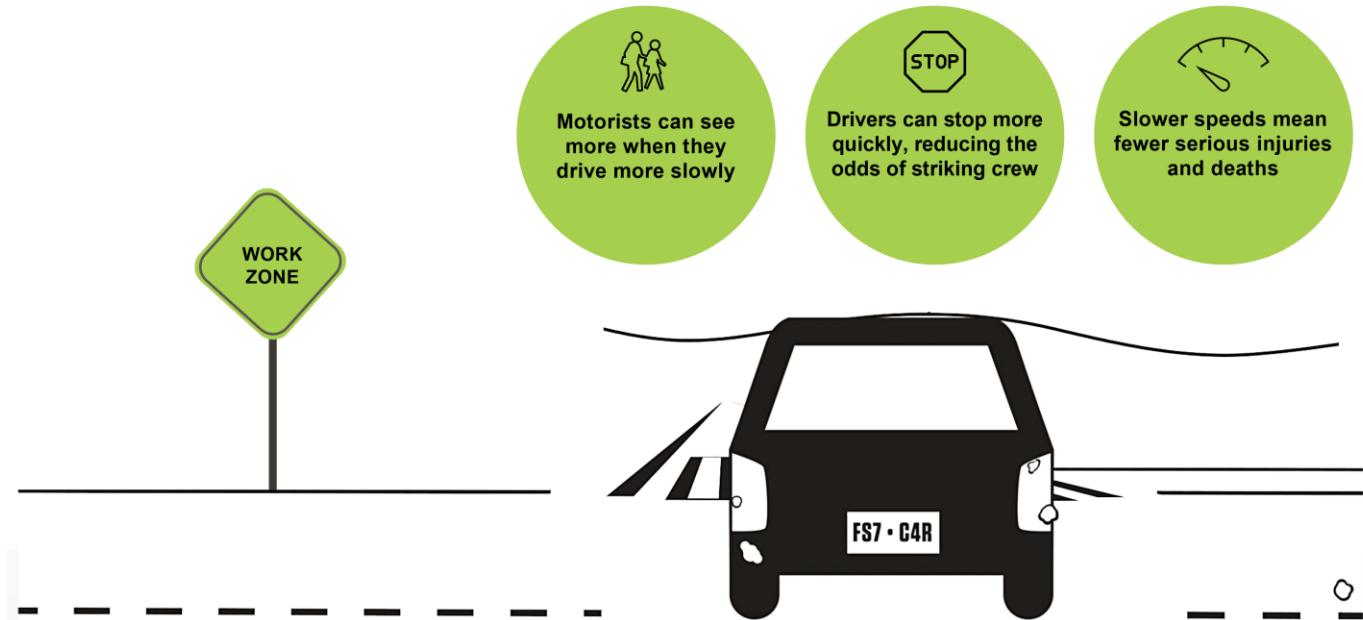
Join us in our mission to make
our roads safer for everyone.



Safety Program Highlights

ZERO
IN ON SAFETY

- > **Proven safety solution**
- > **Automated speed enforcement from a safe environment for all involved**
- > **End-to-end support from system deployment to event processing, public awareness, and beyond**
- > **Legally supported, secure, and compliant safety program**



What You Can Expect

- > **Roadside speed camera technology**
- > **Multipurpose smart mobility platform**
- > **A program that delivers results**

Turnkey Programming



TOTAL PROGRAM SUPPORT

**A comprehensive program
that supports administration
and management**

- **Equipment**
- **Calibration**
- **Deployment**
- **Maintenance**
- **Training**
- **Event Processing**
- **Notice Print/Mail**
- **Customer Service**
- **Reporting**
- **Public Awareness**
- **Payments**
- **Court Support**

Deployment Details

- Operators deploy enforcement vehicles to work zones designated by State Agency (date, time and location)
- Each vehicle is equipped with an independently certified automated speed enforcement system including daily system checks and secondary speed verification for accuracy
- Speeding incidents (images, optional video and data) captured by the systems are downloaded into a secure smart mobility platform



Smart Mobility Platform

**END-TO-END
CASE
MANAGEMENT**

**VERRA
MOBILITY™**

Username

Password

If you are having problems with login please contact your support specialist or email ClientSupportSpecialists@verramobility.com

Employee Users: Please contact IT Services.

Login

A proprietary, secure, easy to use, web-based system that automates much of the enforcement process from event capture to adjudication

- **Event Pre-Processing**
- **Registered Owner Information Acquisition**
- **Law Enforcement Evidence Review & Affirmation**
- **Case Management**
- **Public Awareness & Web Portal**
- **Court/Hearing Support**
- **Reporting**

Work Zone Enforcement | Case Study



PennDOT, PTC, PSP¹

The AWZSE² program uses vehicle-mounted systems to detect and record motorists exceeding posted work zone speed limits by 11 miles per hour or more.³

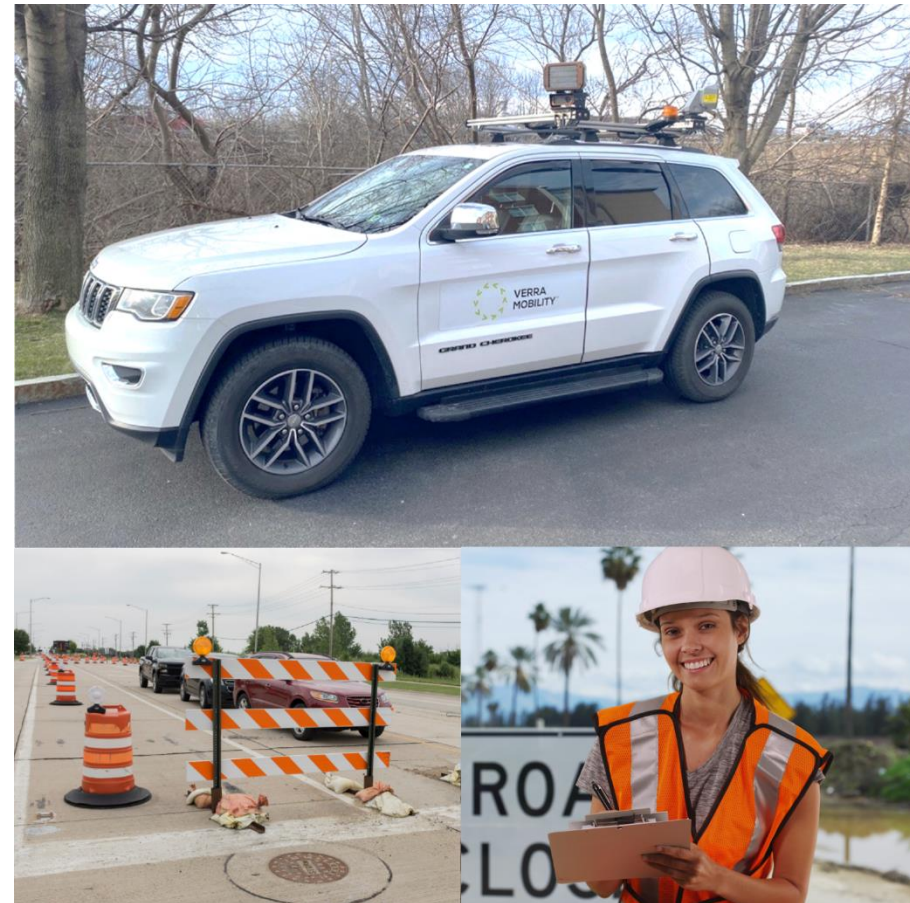
- Workers must be present while AWZSE is active
- First violation – No monetary fine
- Second violation – \$75 fine
- Third and subsequent violations – \$150 fine per occurrence

47% **11+ MPH
SPEED
REDUCTION**

**15 -
50%** **DECREASE
WORK ZONE
CRASHES**

Lessons Learned

- Court/Hearing Process
- Grace Periods
- Signage Requirements
- Work Hours/Presence
- Transfers of Liability
- Vendor Fee Structure





VERRA
MOBILITY™

Connect with Us

Verramobility.com/government



[linkedin.com/
company/VerraMobility](https://linkedin.com/company/VerraMobility)



[facebook.com/
VerraMobility](https://facebook.com/VerraMobility)



[verramobility.com/
Zero-In](http://verramobility.com/Zero-In)



[twitter.com/
VerraMobility](https://twitter.com/VerraMobility)



[youtube.com/
VerraMobility](https://youtube.com/VerraMobility)