

Vermont Agency of Transportation

Policy, Planning & Intermodal Development Division

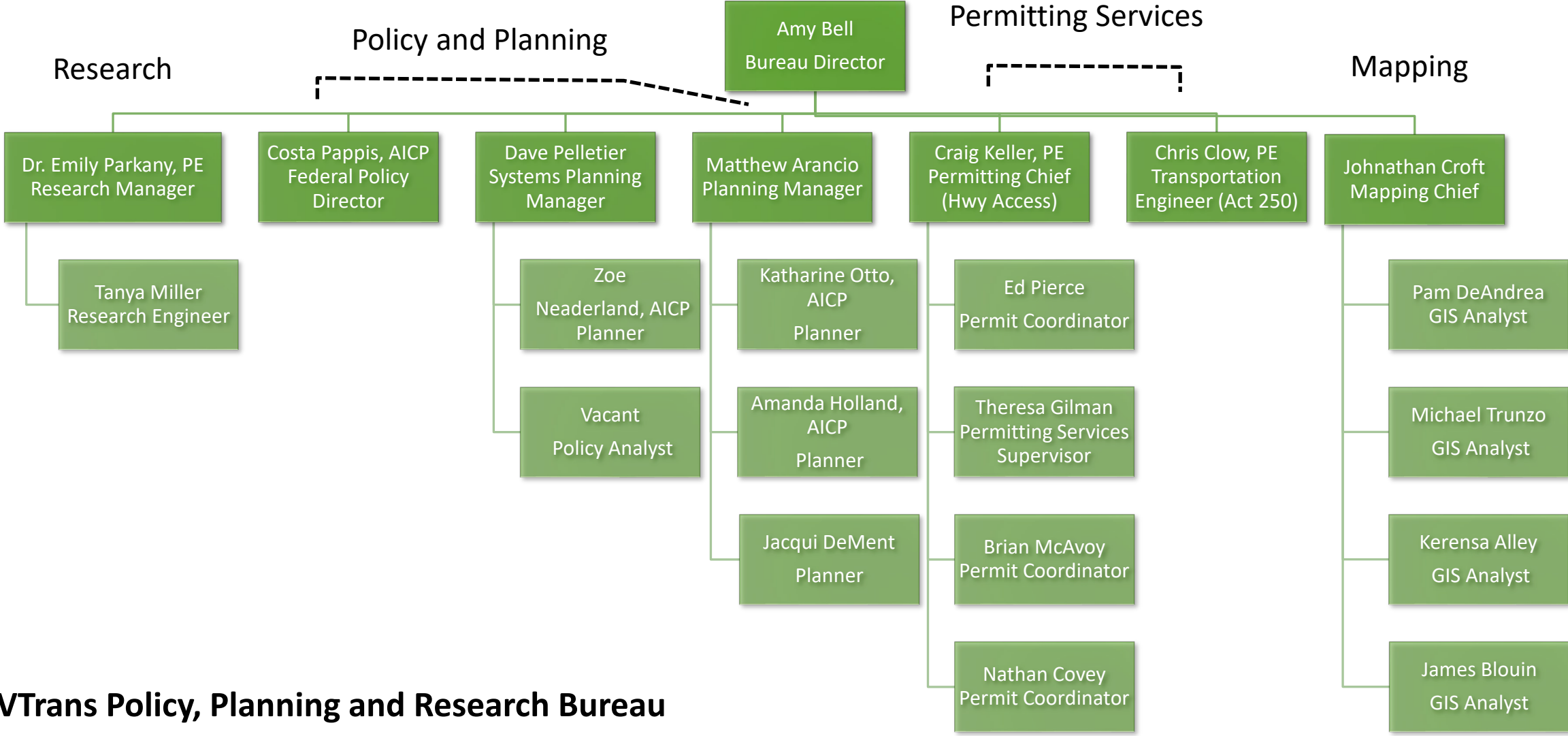
Policy, Planning and Research Bureau Overview

AMY BELL, BUREAU DIRECTOR

JANUARY 12, 2023



Development Review & Permitting Services



Research

Policy and Planning

Amy Bell
Bureau Director

Dr. Emily Parkany, PE
Research Manager

Tanya Miller
Research Engineer

Costa Pappis, AICP
Federal Policy Director

Dave Pelletier
Systems Planning Manager

Zoe Neaderland, AICP
Planner

Vacant
Policy Analyst

Matthew Arancio
Planning Manager

Katharine Otto, AICP
Planner

Amanda Holland, AICP
Planner

Jacqui DeMent
Planner

Craig Keller, PE
Permitting Chief (Hwy Access)

Ed Pierce
Permit Coordinator

Theresa Gilman
Permitting Services Supervisor

Brian McAvoy
Permit Coordinator

Nathan Covey
Permit Coordinator

Chris Clow, PE
Transportation Engineer (Act 250)

Mapping

Johnathan Croft
Mapping Chief

Pam DeAndrea
GIS Analyst

Michael Trunzo
GIS Analyst

Kerensa Alley
GIS Analyst

James Blouin
GIS Analyst

Policy & Planning

- Statewide Plans and Legislative Studies
- Federal Policy Development and Grant Applications
- Better Connections Grant Program
- Transportation Planning Initiative
- U.S. 2 Williston & Moretown-Middlesex & U.S. 4 (Hartford-Woodstock) Corridor Management Plans Underway
- Long Range Transportation & Park & Ride Plan updates Underway
- Transportation Equity Framework Underway
- National and International Coordination
- FAST Act & IIJA Rule Making Monitoring and Implementation



Transportation Planning Initiative (TPI)

TRANSPORTATION PLANNING INITIATIVE

The TPI program's mission is to enhance cooperative decision-making among state, regional, and local partners about the transportation system. It has five main objectives, each covering a variety of projects.

Here are a few highlights from FY 2022.

1

Enhance Cooperation & Coordination Between VTrans, RPCs & Municipalities

241 municipalities actively engaged in regional transportation planning

84 Transportation Advisory Committee (TAC) meetings

47 non-municipal representatives actively engaged via TAC meetings

RAIL, AIR, PUBLIC TRANSIT, BIKE/PED, DISABILITY RIGHTS, CHAMBER OF COMMERCE/ECONOMIC DEVELOPMENT INTEREST GROUPS

2

Better Connect Federal, Regional and Statewide Transportation Planning

57 coordination activities in support of regional public transit providers

28 VTrans committees that involve RPC staff participation



3

Provides Technical Assistance to Municipalities

41 municipal transportation related feasibility/project definition studies completed/undertaken

126 municipalities assisted with transportation related grants

50% of transportation budget spent on municipal technical assistance

29 road inventories conducted in support of Municipal Roads General Permit

4

Advances VTrans Strategic & Long-Range Transportation Plans

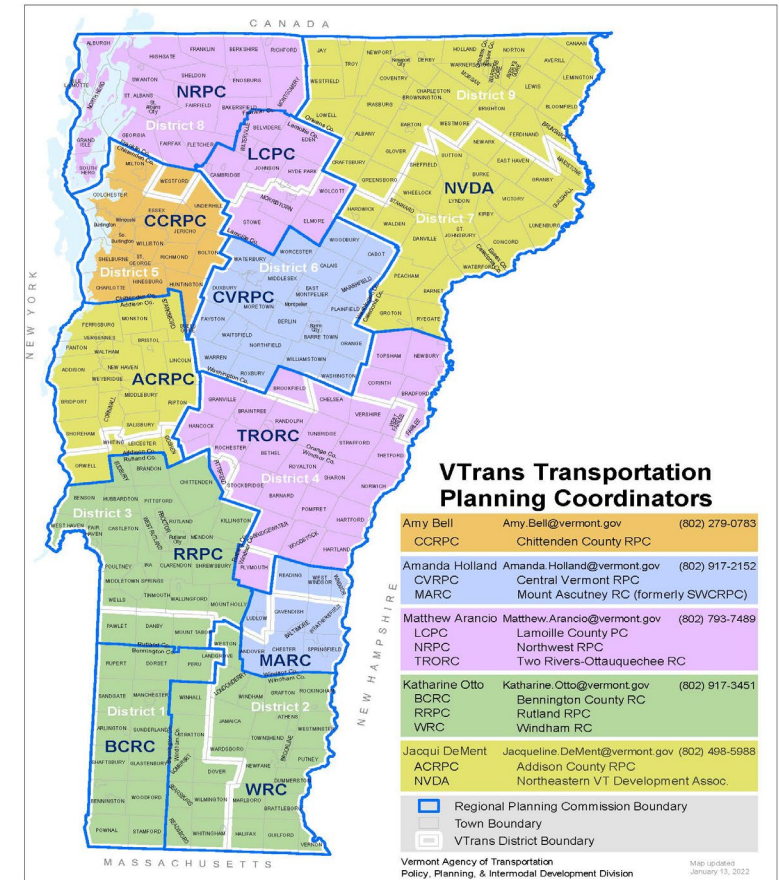
698 data collection activities conducted for VTrans

Note: In 2014, at the request of the Senate Transportation Committee, Regional Planning Commissions began to report on performance indicators relating to the Transportation Planning Initiative (TPI). In 2017 refined indicators were developed as part of the TPI program evaluation, with the new objectives and measures first being reported for SFY18. Numbers for SFY20 and 21 were influenced by Covid-19, where the primary impacts lasted from March 2020 until June 2021. Continued impacts to some activities going forward are anticipated.

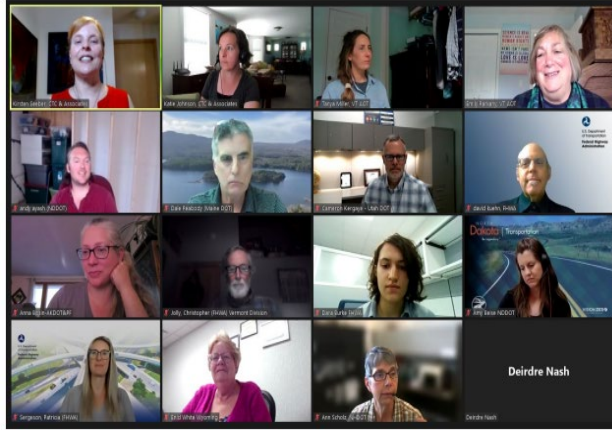
5

Provides a Mechanism for Improved Public Outreach & Education

Objective 5 shares many cross-cutting performance measures with 1-4



Research Section

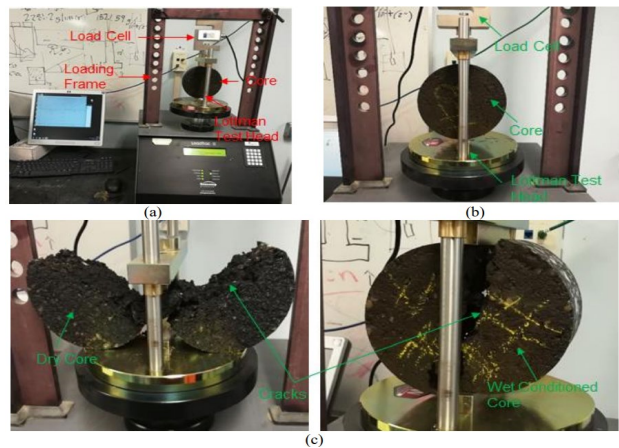


Eight State Virtual Research Peer Exchange



Dynamic Cone Penetrometer Data Analysis External Research Project

- Federally mandated research program
- Five research projects completed this year, seven active projects
- Technical Transfer through Hybrid VTrans Research Symposium & Newsletter
- Transportation Research Collaborative, expanding to other VT Institutions
- New England Transportation Consortium, Transportation Research Board (TRB) and American Assoc. State Highway Transportation Officials (AASHTO) participation



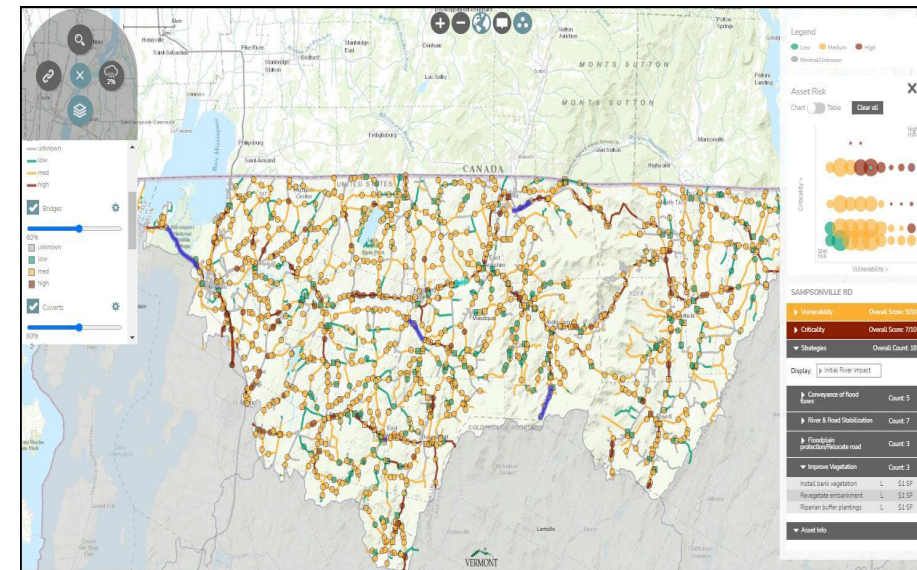
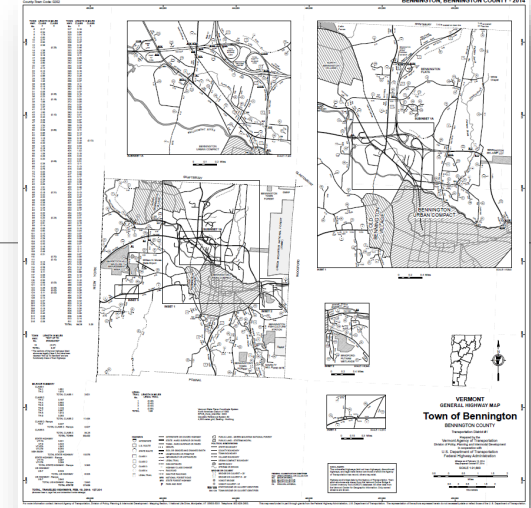
Asphalt Stripping External Research Project Testing



Hybrid Annual September Research and Innovation Symposium

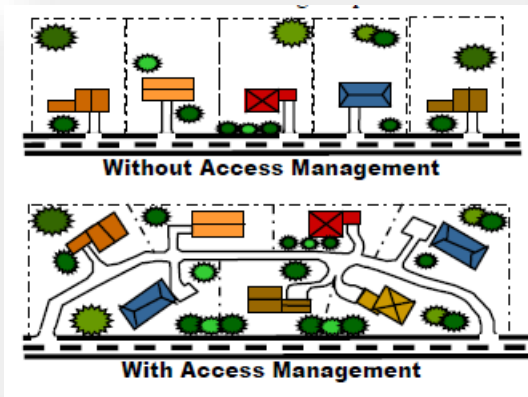
Mapping Section

- Town Highway Maps
- Annual Town Highway Mileage Certificates
- Maintains statewide road centerline GIS data used by municipalities, regions and state
- GIS and data analysis to support other agency activities
- Town highway reclassification
- Maintain Transportation Resilience Planning Tool and expand to include rail corridors

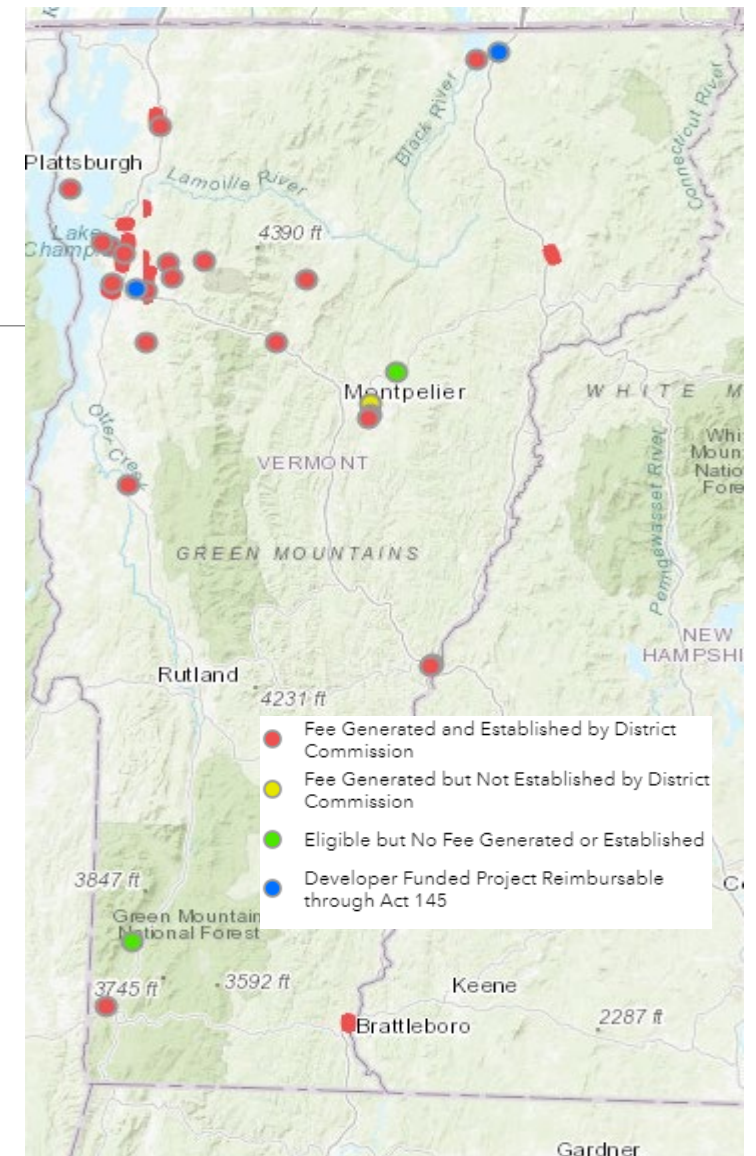


Development Review & Permitting Section

- Permits to Work in State Highway Right-of-Way (Section 1111 Permit)



- Act 250 Application Review
- Act 145 (2014) Transportation Impact Fee management



Location of Transportation Projects with Act 145 Impact Fees

Section Contacts & Topical Directory

Contact	Topics
Amy Bell Policy, Planning and Research Bureau Director 802-279-0783 Amy.Bell@vermont.gov	<ul style="list-style-type: none"> Bureau Management Automated Vehicles Legislative Studies
Dave Pelletier Systems Planning Manager 802-595-9675 Dave.Pelletier@vermont.gov	<ul style="list-style-type: none"> Statewide Transportation Planning Modal Plans National & International Policy Coordination Statewide Travel Demand Model
Matthew Arancio Planning Manager 802-793-7489 Matthew.Arancio@vermont.gov	<ul style="list-style-type: none"> Transportation Planning Initiative Chittenden County RPC and Metropolitan Planning Organization Better Connections Program Corridor Planning
Costa Pappis, CPM, AICP CTP Federal Policy Director 802-793-5049 costa.pppis@vermont.gov	<ul style="list-style-type: none"> Federal Grants IJA Rule Making Monitoring and Implementation Legislative Coordination
Johnathan Croft Mapping Section Chief 802-828-2600 johnathan.croft@vermont.gov	<ul style="list-style-type: none"> Town highway maps and mileage certification Roadway re-classification GIS for Transportation
Craig S. Keller, P.E. Chief of Permitting Services 802-279-1152 craig.keller@vermont.gov	<ul style="list-style-type: none"> Permits to Work in State ROW (Section 1111 Permit)
Christopher Clow, P.E. Transportation Engineer 802-522-4901 christopher.clow@vermont.gov	<ul style="list-style-type: none"> Act 250 Traffic Impact Study Review Act 145 Transportation Impact Fees
Dr. Emily Parkany, P.E. Research Manager 802-272-6862 emily.parkany@vermont.gov	<ul style="list-style-type: none"> Agency research projects Research Project Management Northeast and US National Research Programs