



VERMONT
CARE
PARTNERS

Amy Johnson – Director of Government Affairs & Communication
Vermont Care Partners
Testimony – House Health Care (S.109)

Vermont's System of Care Designated and Specialized Service Agencies

NCSS: Northwestern Counseling & Support Services www.ncssinc.org

NKHS: Northeast Kingdom Human Services www.nkhs.org

GMSS: Green Mountain Support Services www.gmssi.org

LCMHS: Lamoille County Mental Health Services www.Lamoille.org

CCS: Champlain Community Services www.ccs-vt.org

HC: Howard Center www.howardcenter.org

NFI: Northeastern Family Institute, NFI Vermont, Inc. www.nfivermont.org

WCMHS: Washington County Mental Health Services www.wcmhs.org

CSAC: Counseling Service of Addison County www.csac-vt.org

CMC: Clara Martin Center www.claramartin.org

UVS: Upper Valley Services www.uvs-vt.org

LSI: Lincoln Street, Inc. www.lincolnstreetinc.org

RMHS: Rutland Mental Health Services / Community Care Network www.rmhsccn.org

HCRS: Health Care & Rehabilitation Services www.hcrs.org

UCS: United Counseling Service of Bennington County www.ucsvt.org

FFSV: Families First in Southern Vermont www.familiesfirstvt.org



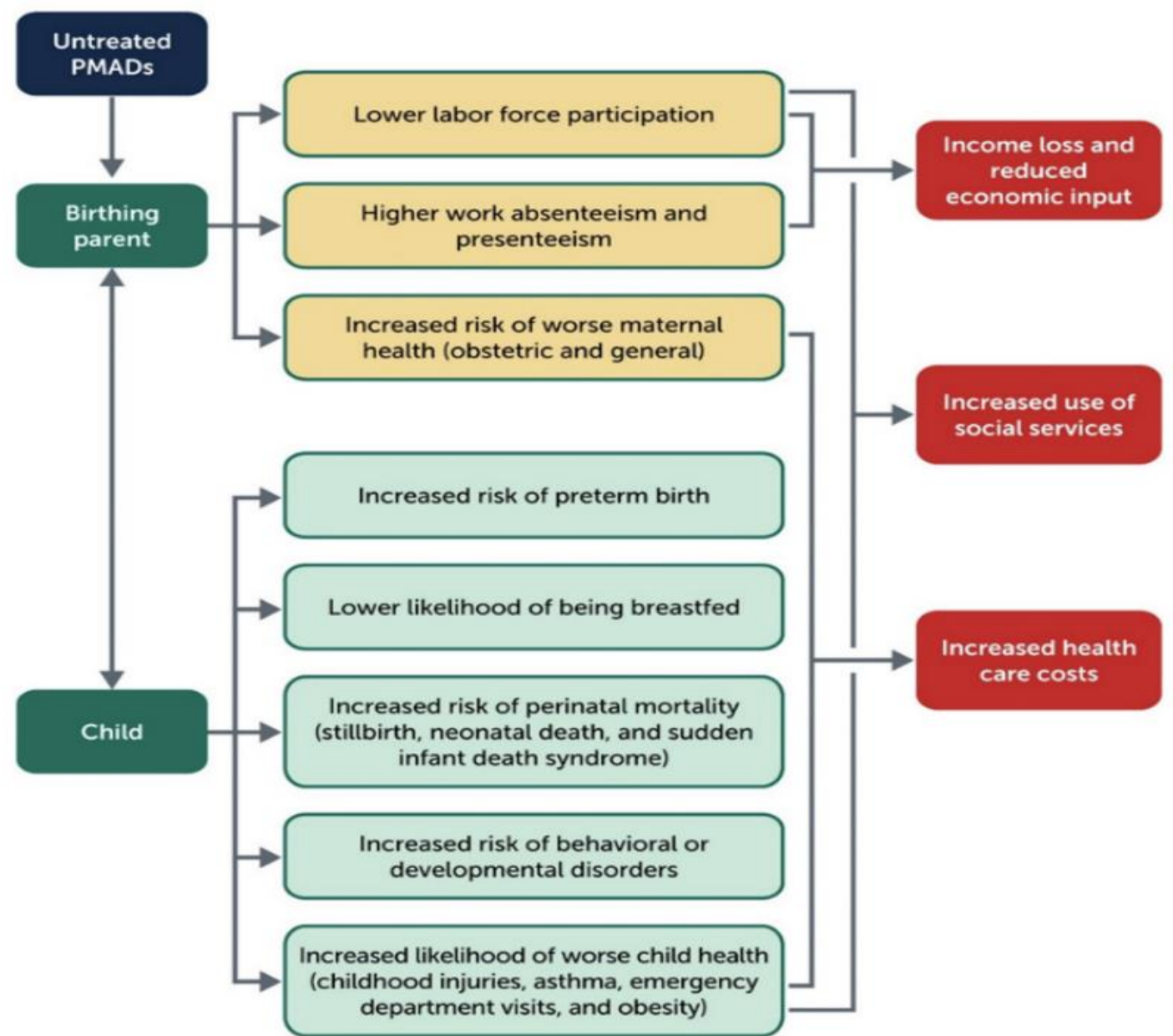
Why Perinatal Doula Care Matters?



~ ~ Doulas provide physical and emotional support and guidance during pregnancy, labor, and the postpartum period. They support families in making meaning of their experience and are part of their care team to help amplify the voice of the pregnant person and family ~ ~

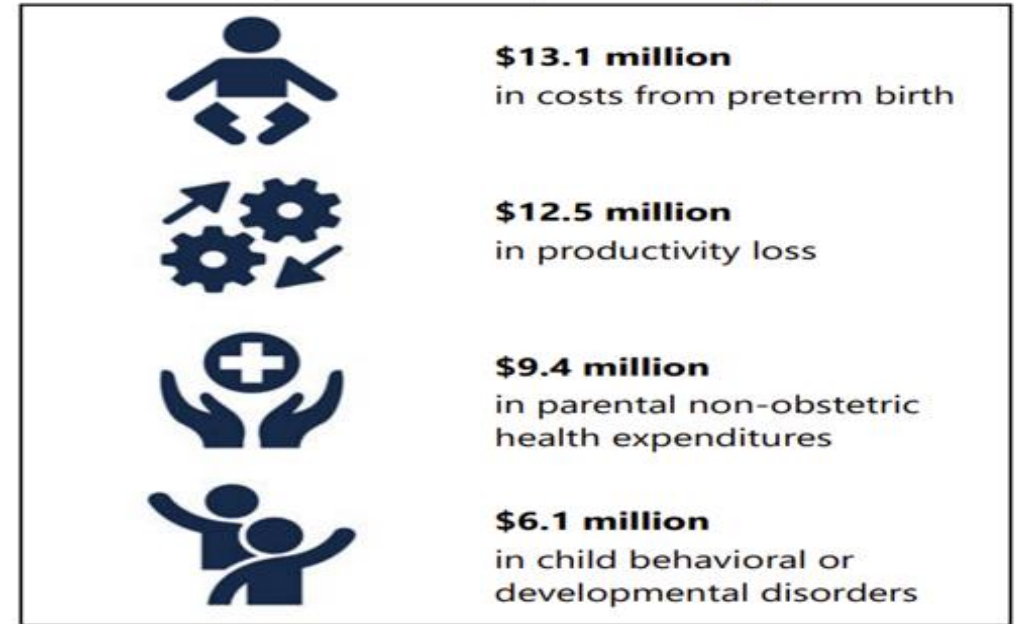
- Provides emotional support, relationship navigation, sibling care, infant care and child development, postpartum planning, advocacy, protective factors, loss support, etc. – care is person centered, person led
- Supports parent/child bonding and attachment which impacts child development both short and long term
- Supports health equity
- Doula care is mental health care *
- Preventative care that drives down healthcare costs
- **Currently available as a costly out-of-pocket service - inaccessible to many who would greatly benefit**

The Impact of Untreated Perinatal Depression and Related Disorders on Vermont



Doulas Support Positive Health Outcomes and Health Equity

- Improve birth outcomes and experiences; decrease in preterm births and c-section rates
- Decrease maternal mortality rates
- Mitigate the risk/impact of perinatal depression and related disorders; suicide prevention
- Support early relational health
- Support parent/child attachment and bonding which supports healthy child development
- Connection to basic needs support and upstream service connection
- Provide culturally congruent care



Source: Mathematica calculated the top parental and child cost estimates for this study.

Doulas help improve racial disparities in health outcomes by ensuring that pregnant people facing the greatest risk of discrimination and mistreatment in healthcare receive the additional support they require

DA Supported Doula Care in Franklin, Grand Isle, & Washington County



WCMHS

Washington County Mental Health Services, Inc.

Where Hope and Support Come Together

~ The Doula Project ~



Funding and Limitations

Funding

- Parent Child Center funding
- DMH
- STAMPP (HRSA)
- Health Equity Funding (VDH)
- Foundations
- Hospital Support

Barriers

- Many program components are non-billable creating a sustainability concern for the program
- Difficult to add on essential program components
- Unable to expand services to more Vermonters

Please Support the Current Version of S.109 to Help Vermont in Moving Toward Medicaid Funding for Doula Care

Questions?

Resources:

[Doula Care Improves Health Outcomes, Reduces Racial Disparities and Cuts Cost - National Health Law Program](#)

[Societal Costs of Perinatal Mood and Anxiety Disorders in Vermont \(mathematica.org\)](#)

[A Cost-Benefit Analysis of Doula Care from a Public Health Framework \(healthlaw.org\)](#)

[ASPE-Doula-Issue-Brief-12-13-22.pdf \(hhs.gov\)](#)



Amy Johnson – amy@vermontcarepartners.org