

A scenic view of a rocky bluff overlooking a lake. The bluff is composed of layered, greyish-brown rock. A large, gnarled tree with green leaves grows on the cliffside. The lake is in the foreground, with gentle waves lapping at the shore. The sky is a clear, deep blue.

# Alburgh Bluffs addition to Alburgh Dunes State Park

160 acres, Town of Alburgh, Grande Isle County, VT

Testimony to House Environment & Energy Committee  
By Jon Binhammer, Director of Land Protection, The Nature Conservancy

# Alburgh Bluffs

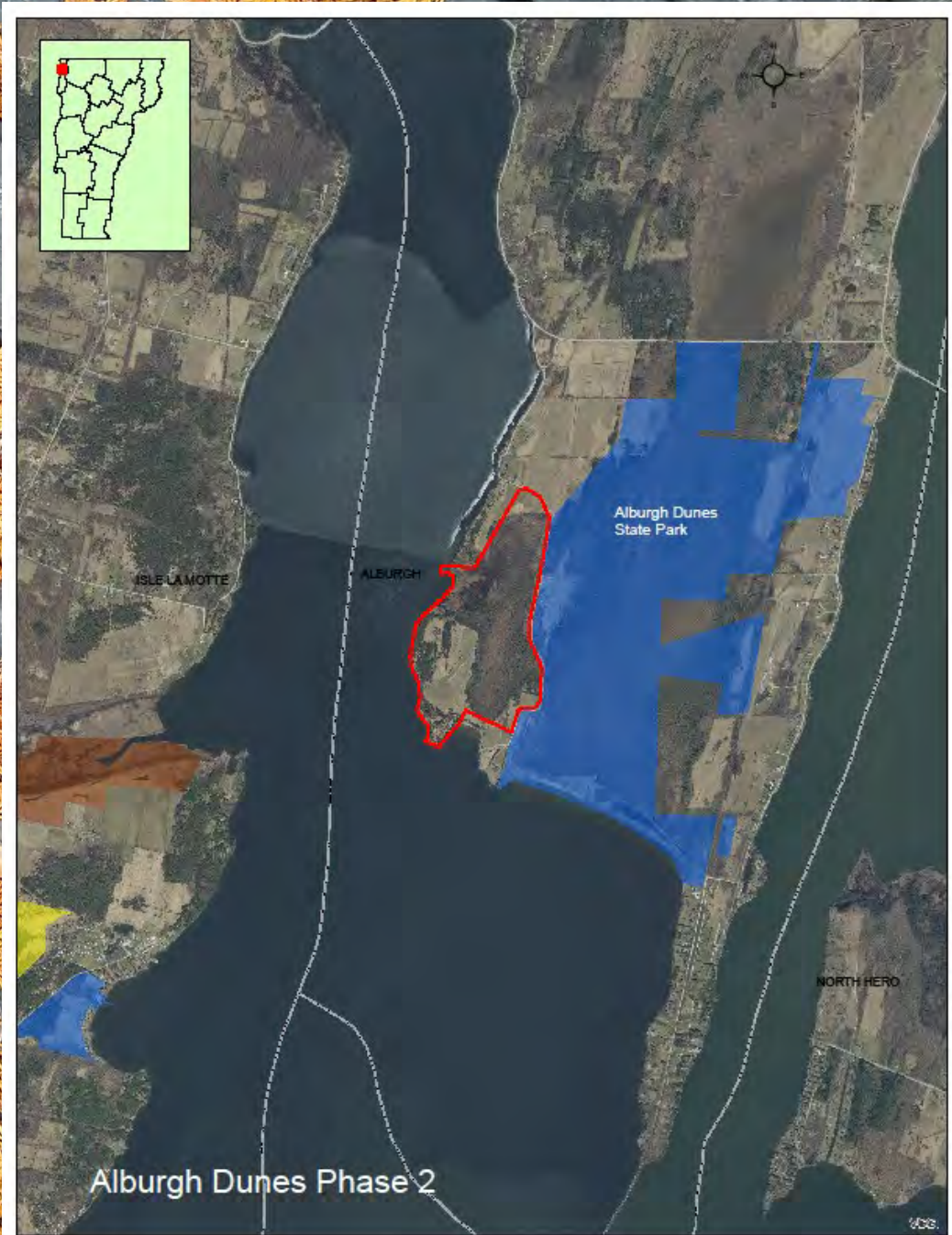
4,800 feet of frontage on Lake Champlain

86 acres of wetlands

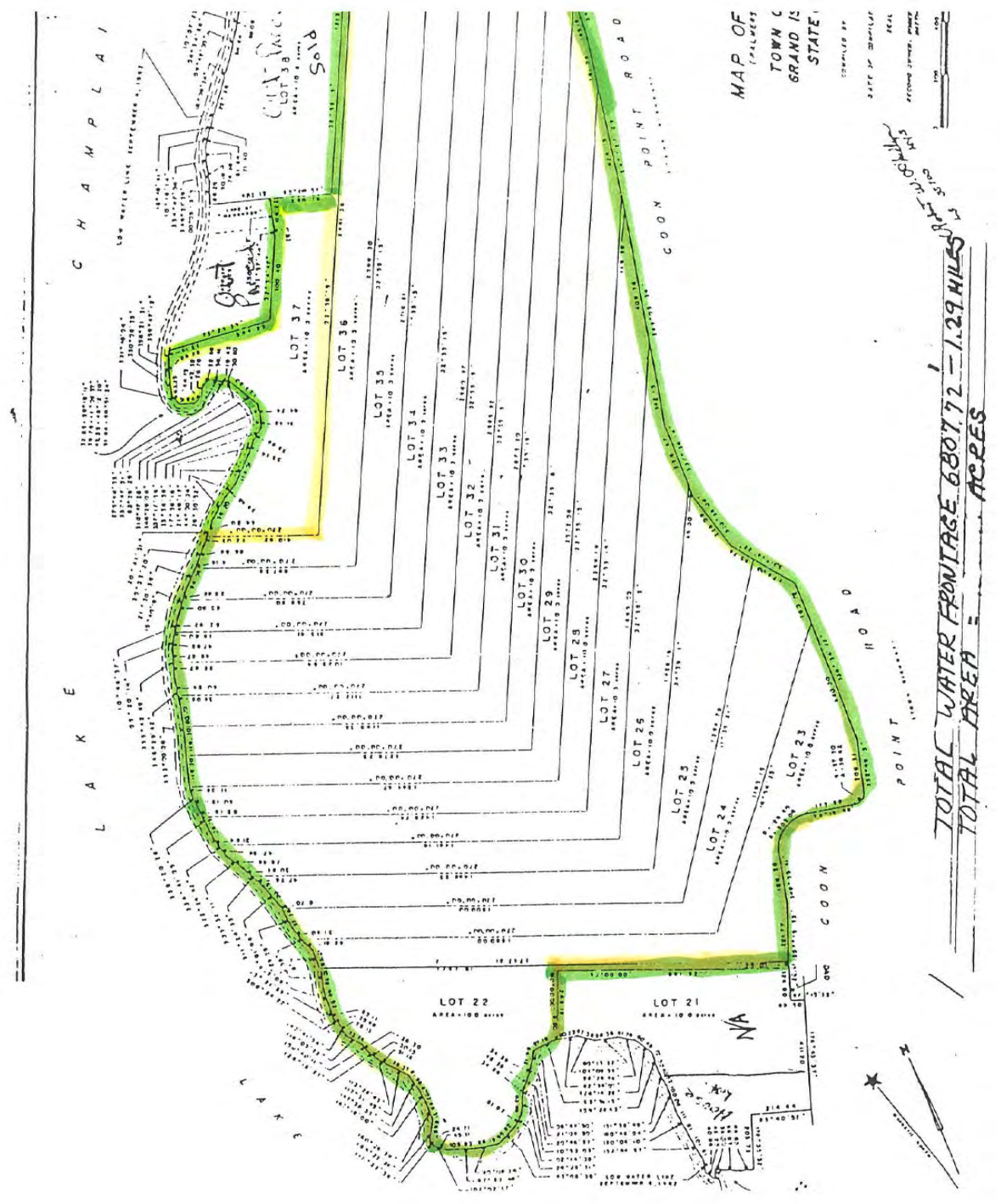
74 acres of uplands

Views of Green Mountains and Adirondacks





















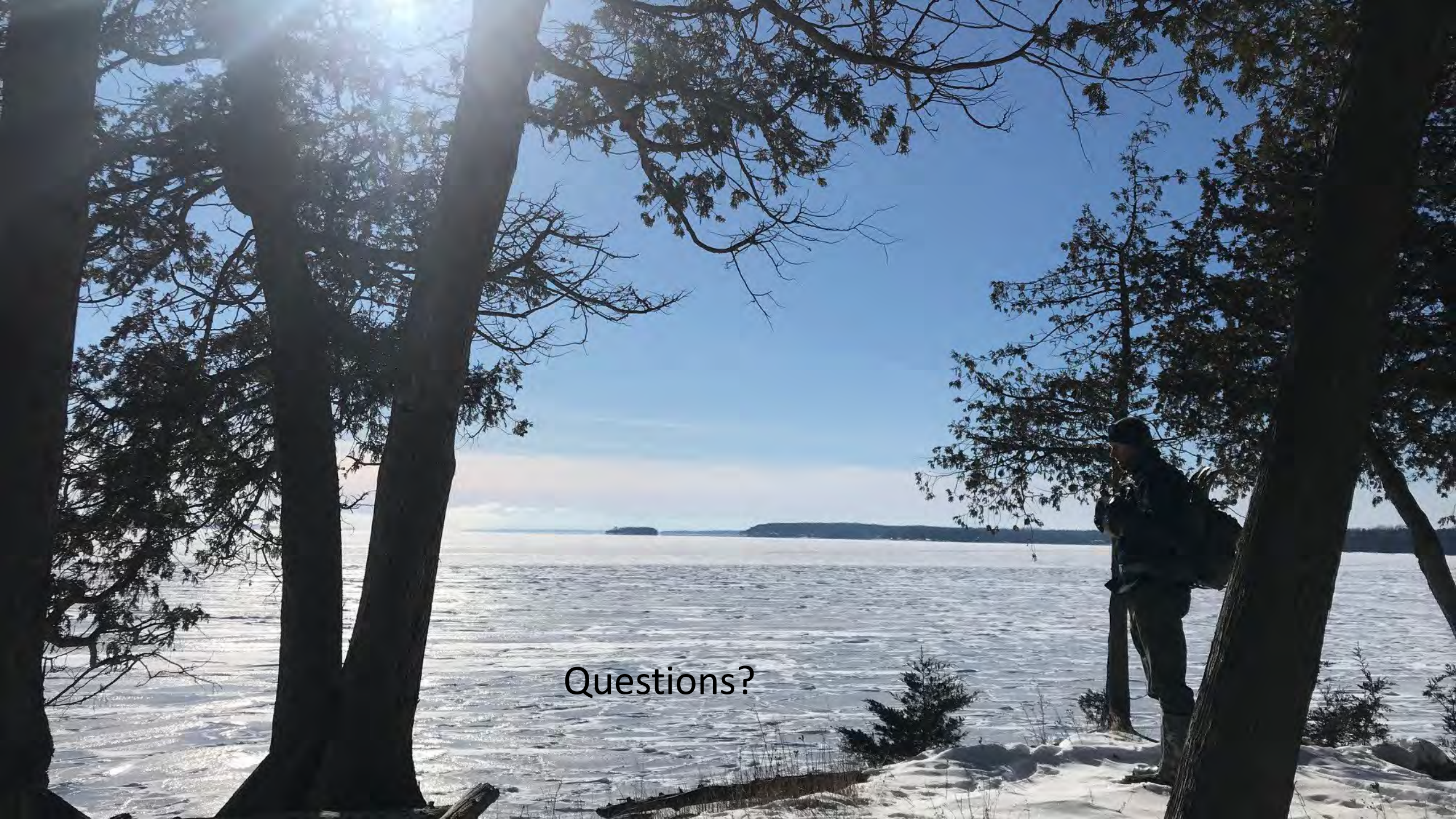
16 Natural Communities, 6 rare or very rare  
27 rare, threatened or endangered species



Purchase Price: \$1,109,000

VHCB Investment: \$496,000

LWCF: \$554,500



Questions?