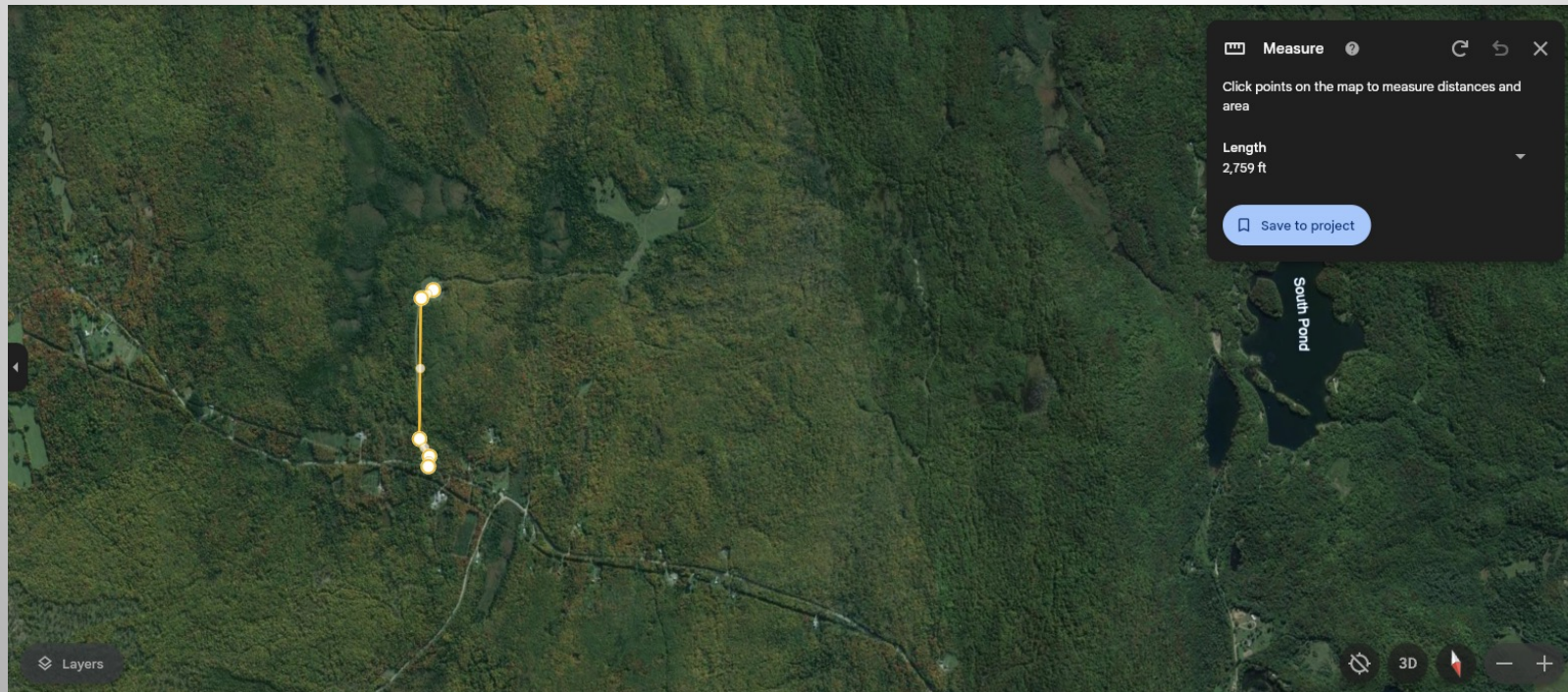


# Examples of Forest Fragmentation/Road Rule

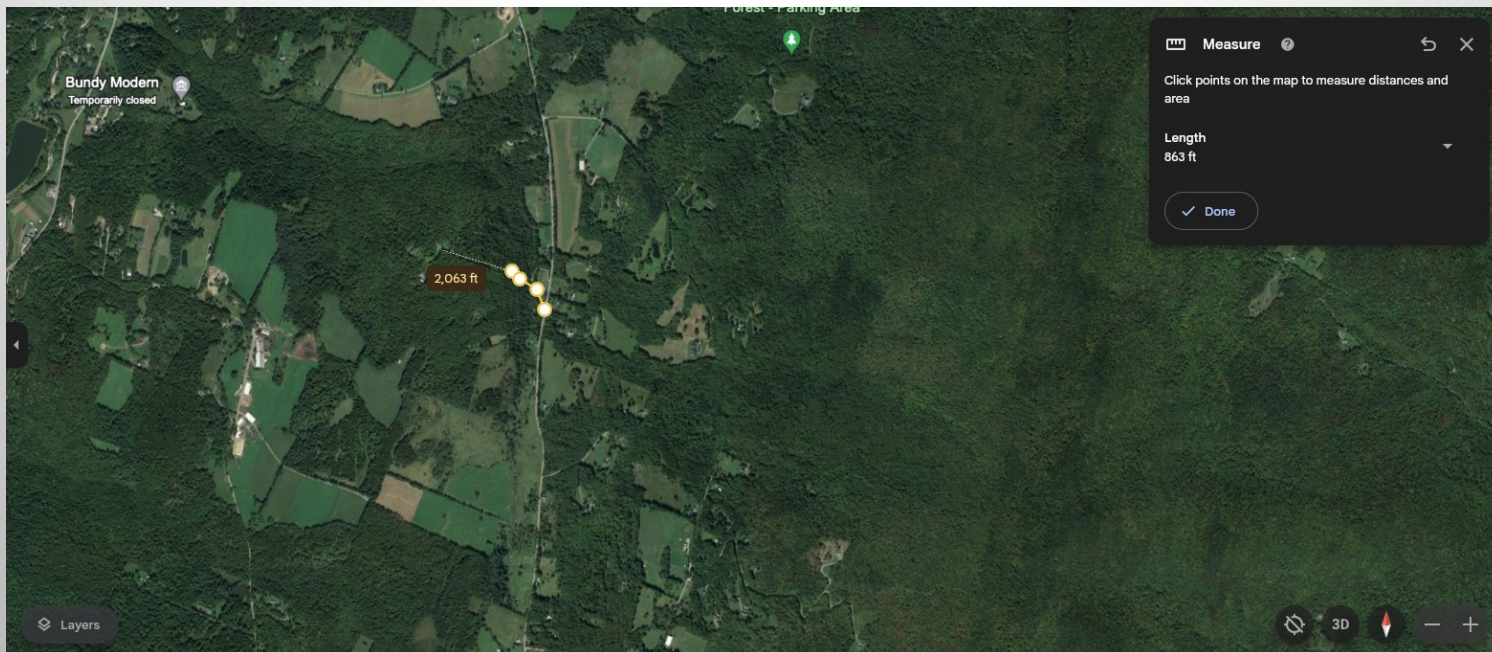
---



Eden – No Zoning or Subdivision Regulations

# Examples of Forest Fragmentation/Road Rule

---



Waitfield Vermont – Private Road

# Examples of Forest Fragmentation/Road Rule

---



Warren Vermont – Private Road Extension?

# Examples of Forest Fragmentation/Road Rule

---

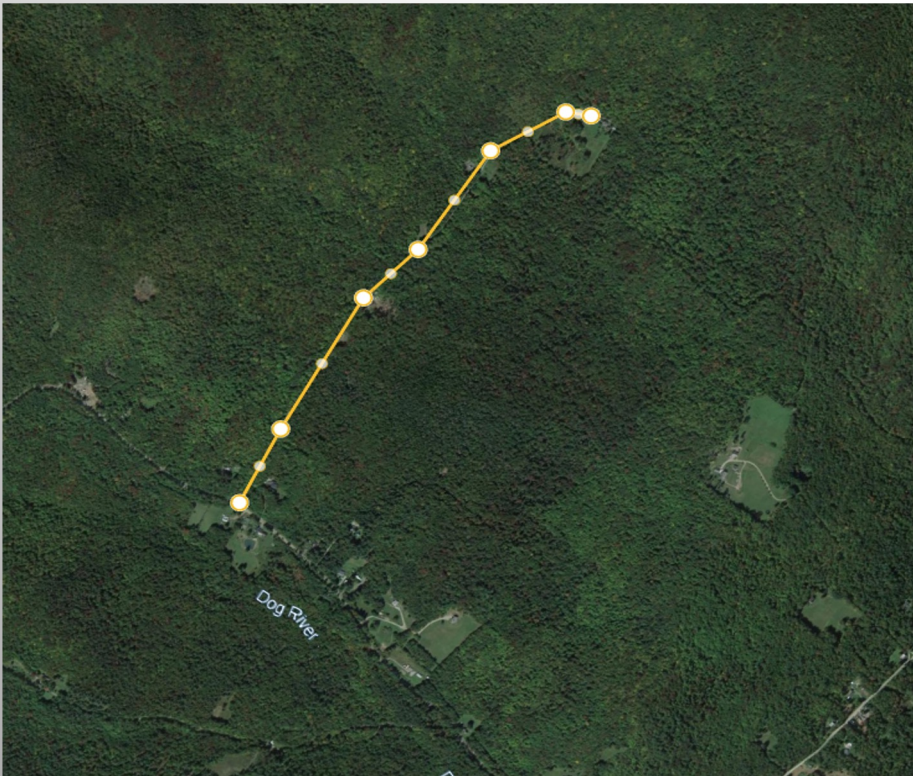


Orange

Provencher Lane- Class 3 Road  
3,500 feet long

# Examples of Forest Fragmentation/Road Rule

---



Roxbury

Shaw Road- 5,000 feet long

# Examples of Forest Fragmentation/Road Rule

---



Granville

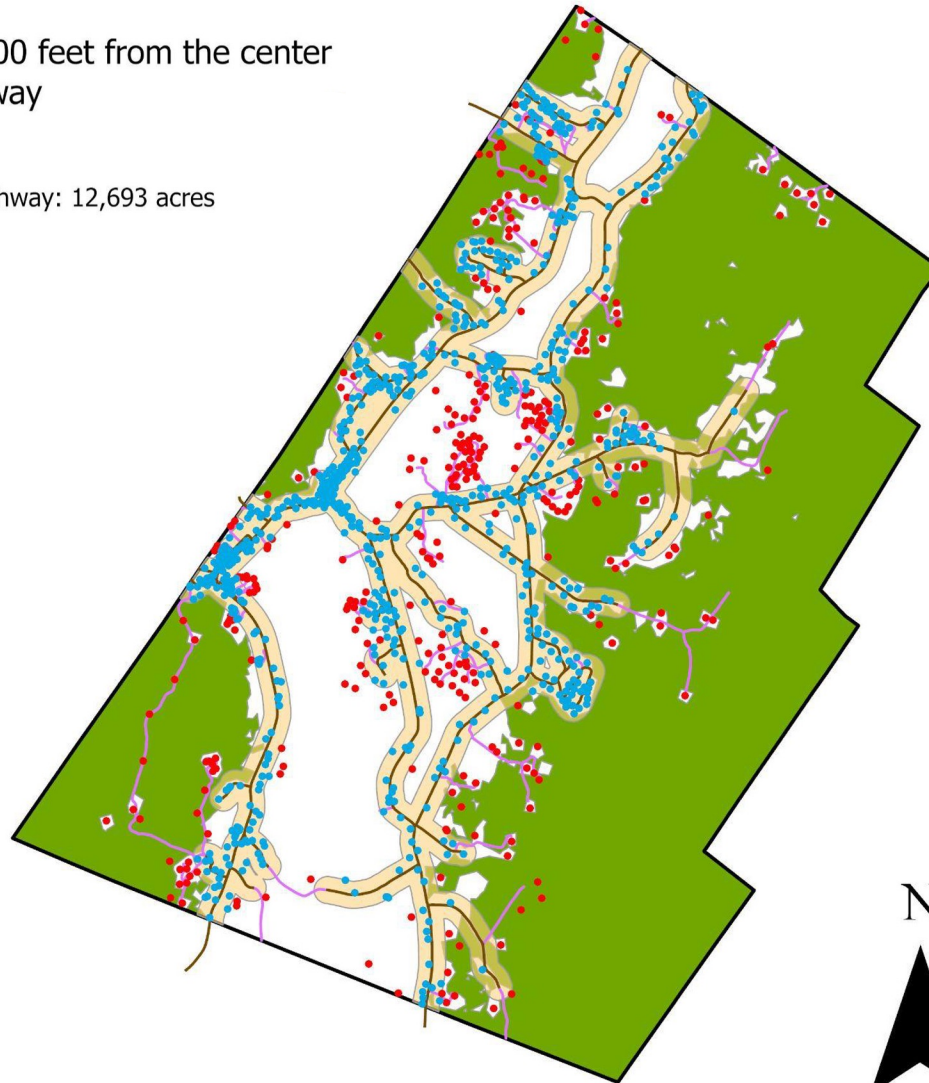
Driveway- 1,600 feet long

## Waitsfield land more than 500 feet from the center line of a state or town highway

Waitsfield total area: 16,591 acres  
 Beyond 500 ft of a state or town highway: 12,693 acres  
 Area within 500 ft: 23.5%  
 Area beyond 500 ft: 76.5%

- Waitsfield E911
  - within 500 ft of a road
  - E911 points
- Waitsfield state and town highways
- Waitsfield Class 4 and private roads
- Waitsfield acreage within 500 ft of a road
- Waitsfield land not within a forest block
- Waitsfield forest blocks

0 0.5 1 2 Miles



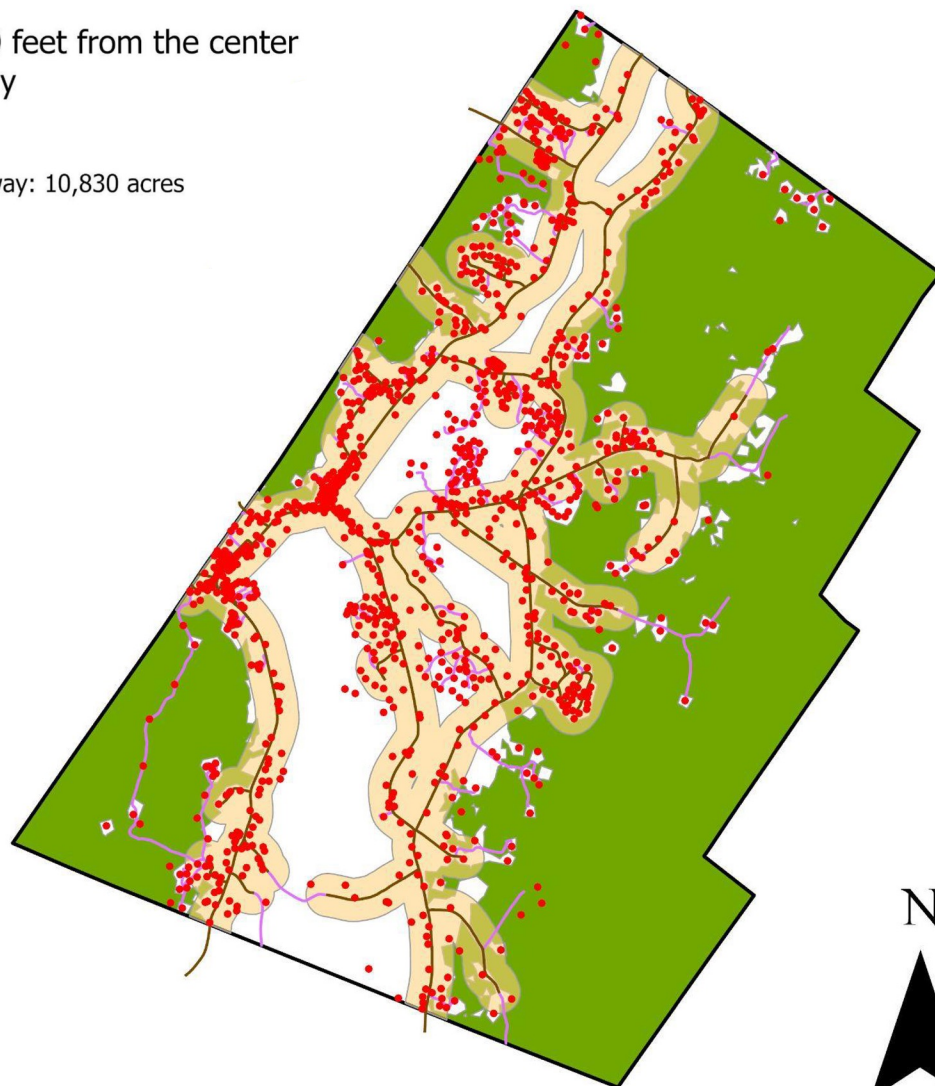
Waitsfield Total E911 Points	1,183
E911 Points within 500 ft of a state or town road	846
Percentage within 500 ft	71.51%



## Waitsfield land more than 800 feet from the center line of a state or town highway

Waitsfield total area: 16,591 acres  
Beyond 800 ft of a state or town highway: 10,830 acres  
Area within 800 ft: 34.72%  
Area beyond 800 ft: 65.28%

- E911 points
- Waitsfield state and town highways
- Waitsfield Class 4 and private roads
- Waitsfield acreage within 800 ft of a road
- Waitsfield land not within a forest block
- Waitsfield forest blocks



0 0.5 1 2 Miles

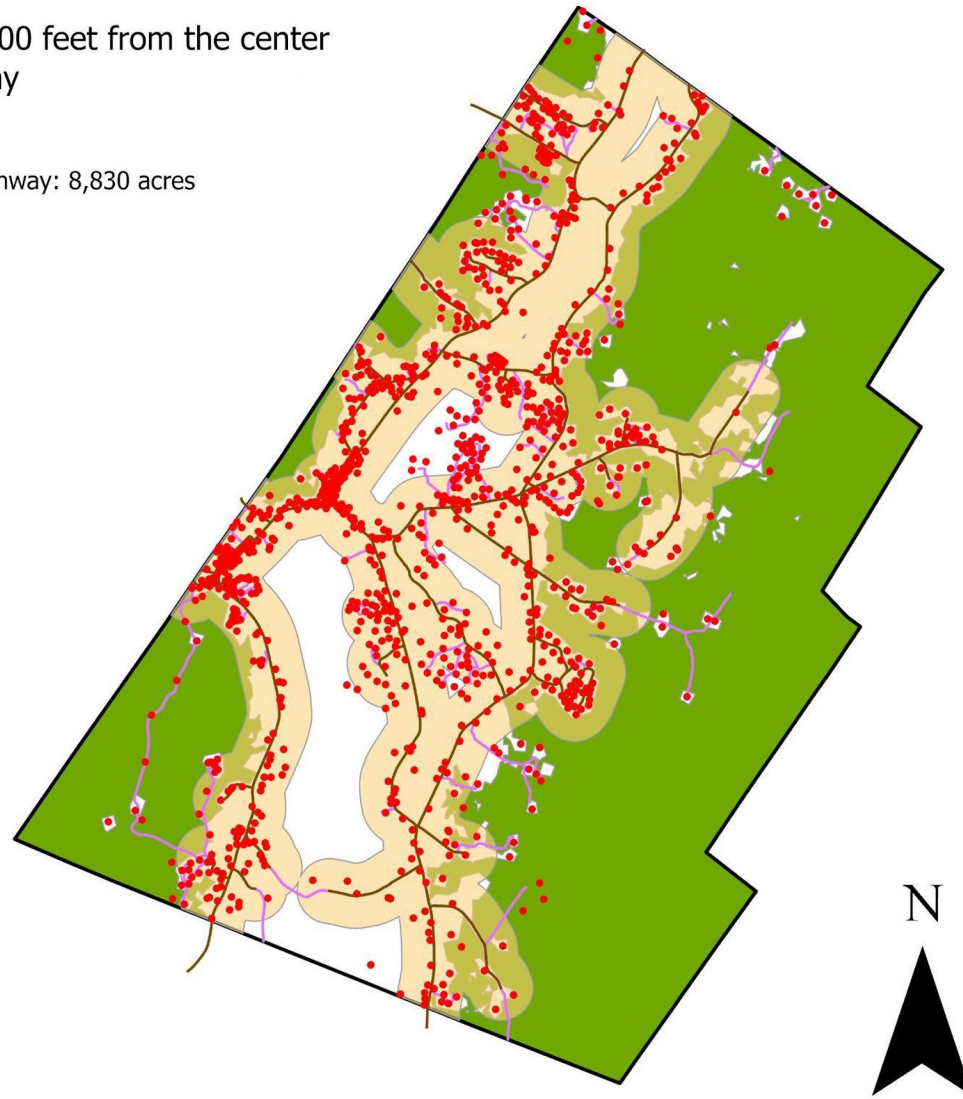


## Waitsfield land more than 1,200 feet from the center line of a state or town highway

Waitsfield total area: 16,591 acres  
Beyond 1,200 ft of a state or town highway: 8,830 acres  
Area within 1,200 ft: 46.78%  
Area beyond 1,200 ft: 53.22%

- E911 points
- Waitsfield state and town highways
- Waitsfield Class 4 and private roads
- Waitsfield acreage within 1200 ft of a road
- Waitsfield land not within a forest block
- Waitsfield forest blocks

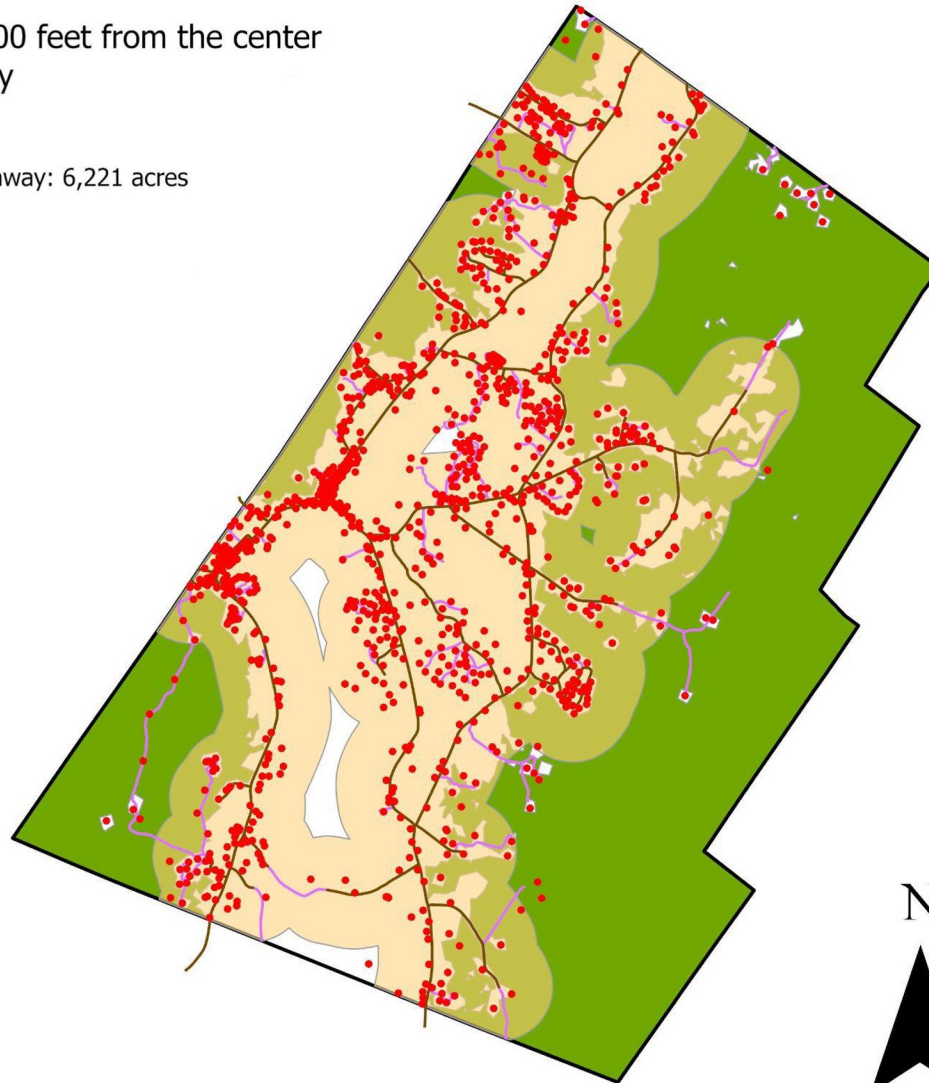
0 0.5 1 2 Miles



## Waitsfield land more than 2,000 feet from the center line of a state or town highway

Waitsfield total area: 16,591 acres  
Beyond 2,000 ft of a state or town highway: 6,221 acres  
Area within 2,000 ft: 62.5%  
Area beyond 2,000 ft: 37.5%

- E911 points
- Waitsfield state and town highways
- Waitsfield Class 4 and private roads
- Waitsfield acreage within 2000 ft of a road
- Waitsfield land not within a forest block
- Waitsfield forest blocks



0 0.5 1 2 Miles



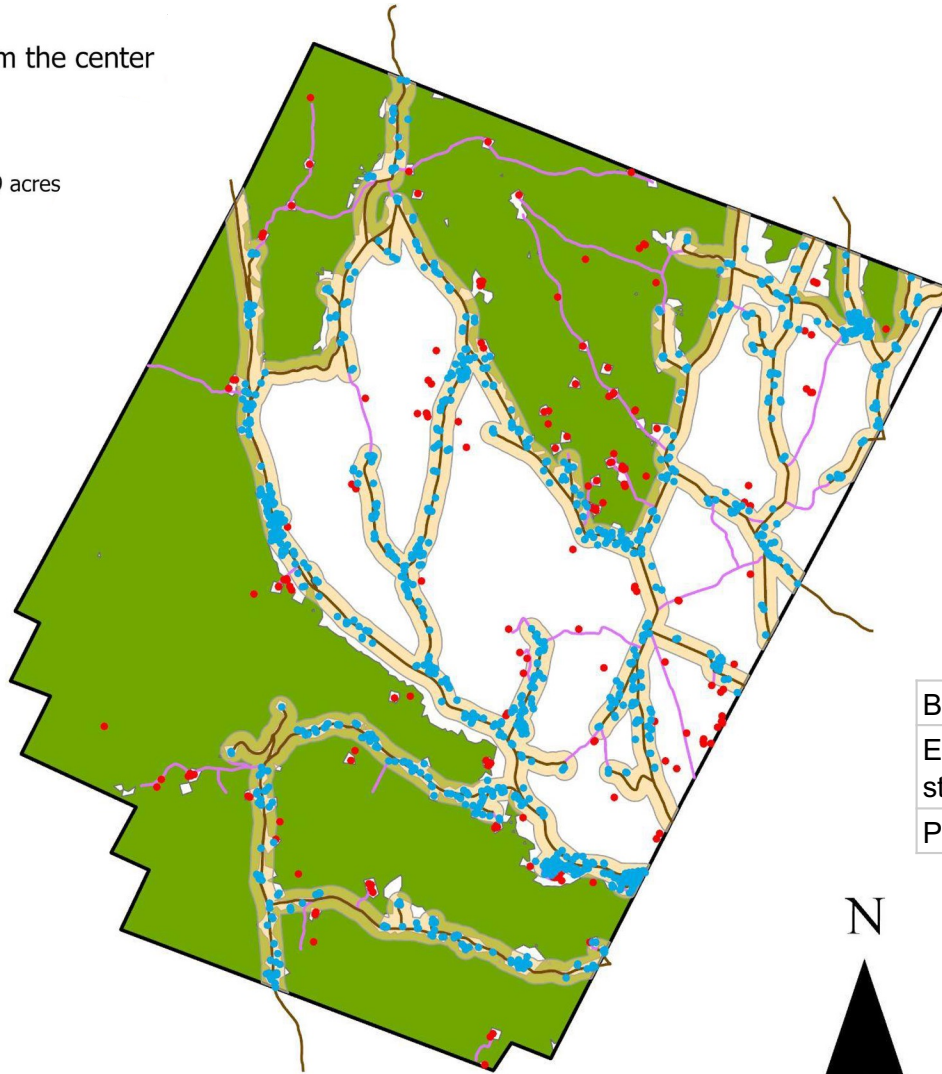
Waitsfield			
Town		Forests	
Acreage within 500 ft of a road	3,898	Forests within 500 ft of a road	429
Acreage beyond 500 ft of a road	12,693	Forests beyond 500 ft of a road	8,797
Percentage within 500 ft	23.50%	Percentage within 500 ft	4.65%
Percentage beyond 500 ft	76.50%	Percentage beyond 500 ft	95.35%
Acreage within 800 ft of a road	5,761	Forests within 800 ft of a road	1,022
Acreage beyond 800 ft of a road	10,830	Forests beyond 800 ft of a road	8,204
Percentage within 800 ft	34.72%	Percentage within 800 ft	11.08%
Percentage beyond 800 ft	65.28%	Percentage beyond 800 ft	88.92%
Acreage within 1,200 ft of a road	7,761	Forests within 1200 ft of a road	1,874
Acreage beyond 1,200 ft of a road	8,830	Forests beyond 1200 ft of a road	7,352
Percentage within 1,200 ft	46.78%	Percentage within 1200 ft	20.31%
Percentage beyond 1,200 ft	53.22%	Percentage beyond 1200 ft	79.69%
Acreage within 2,000 ft of a road	10,370	Forests within 2000 ft of a road	3,378
Acreage beyond 2,000 ft of a road	6,221	Forests beyond 2000 ft of a road	5,848
Percentage within 2,000 ft	62.50%	Percentage within 2000 ft	36.62%
Percentage beyond 2,000 ft	37.50%	Percentage beyond 2000 ft	63.38%
Total Town Area	16,591	Total Forest Area	9,226
		Percentage of town acreage that is forested	55.61%

**Braintree land more than 500 feet from the center line of a state or town highway**

Braintree total area: 24,670 acres  
 Beyond 500 ft of a state or town highway: 19,089 acres  
 Area within 500 ft: 22.62%  
 Area beyond 500 ft: 77.38%

- Braintree E911 within 500 ft of a road ●
- E911 points ●
- Braintree state and town highways —
- Braintree Class 4 and private roads —
- Braintree acreage within 500 ft of a road
- Braintree land not within a forest block
- Braintree forest blocks

0 0.75 1.5 3 Miles



Braintree Total E911 Points	1,268
E911 Points within 500 ft of a state or town road	1,083
Percentage within 500 ft	85.41%



Braintree land more than 800 feet from the center line of a state or town highway

Braintree total area: 24,670 acres  
Beyond 800 ft of a state or town highway: 16,170 acres  
Area within 800 ft: 34.45%  
Area beyond 800 ft: 65.55%

E911 points

Braintree state and town highways

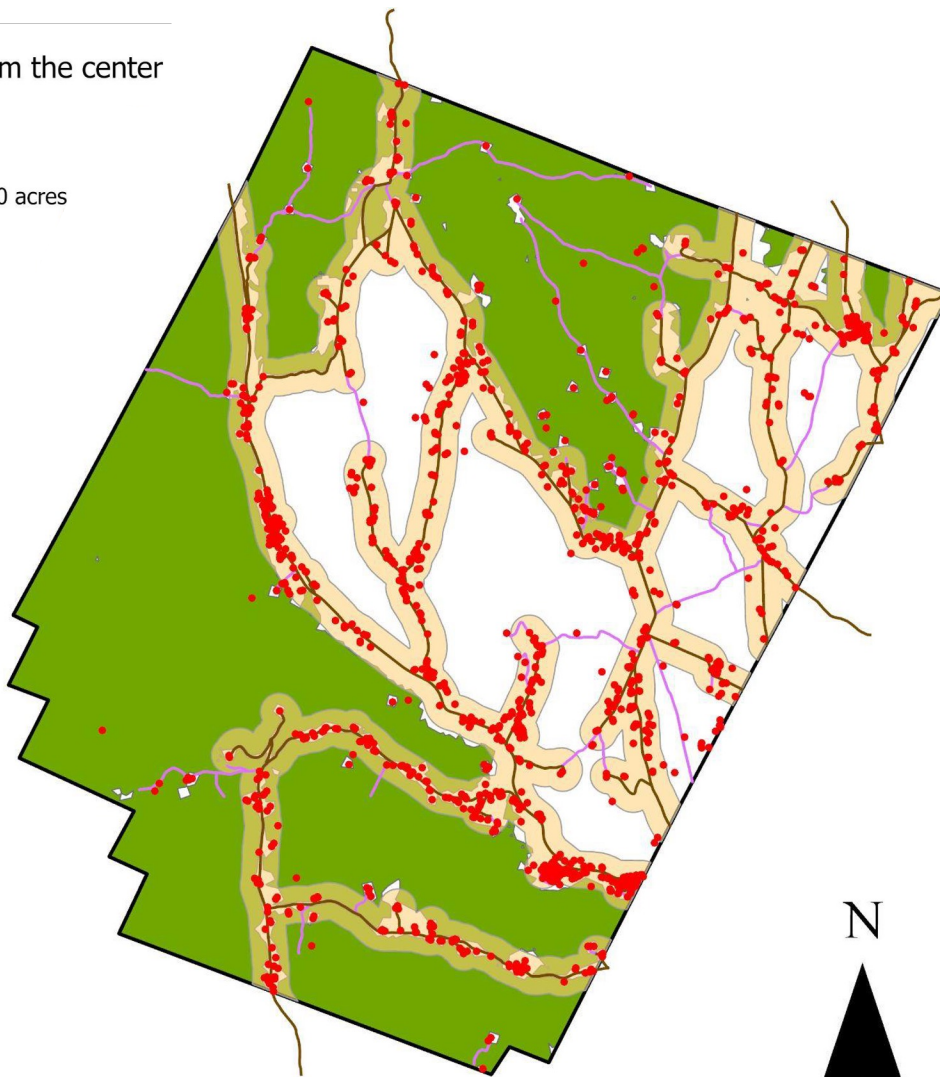
Braintree Class 4 and private roads

Braintree acreage within 800 ft of a road

Braintree land not within a forest block

Braintree forest blocks

0 0.75 1.5 3 Miles



Braintree land more than 1,200 feet from the center line of a state or town highway

Braintree total area: 24,670 acres  
Beyond 1,200 ft of a state or town highway: 12,760 acres  
Area within 1,200 ft: 48.28%  
Area beyond 1,200 ft: 51.72%

E911 points

Braintree state and town highways

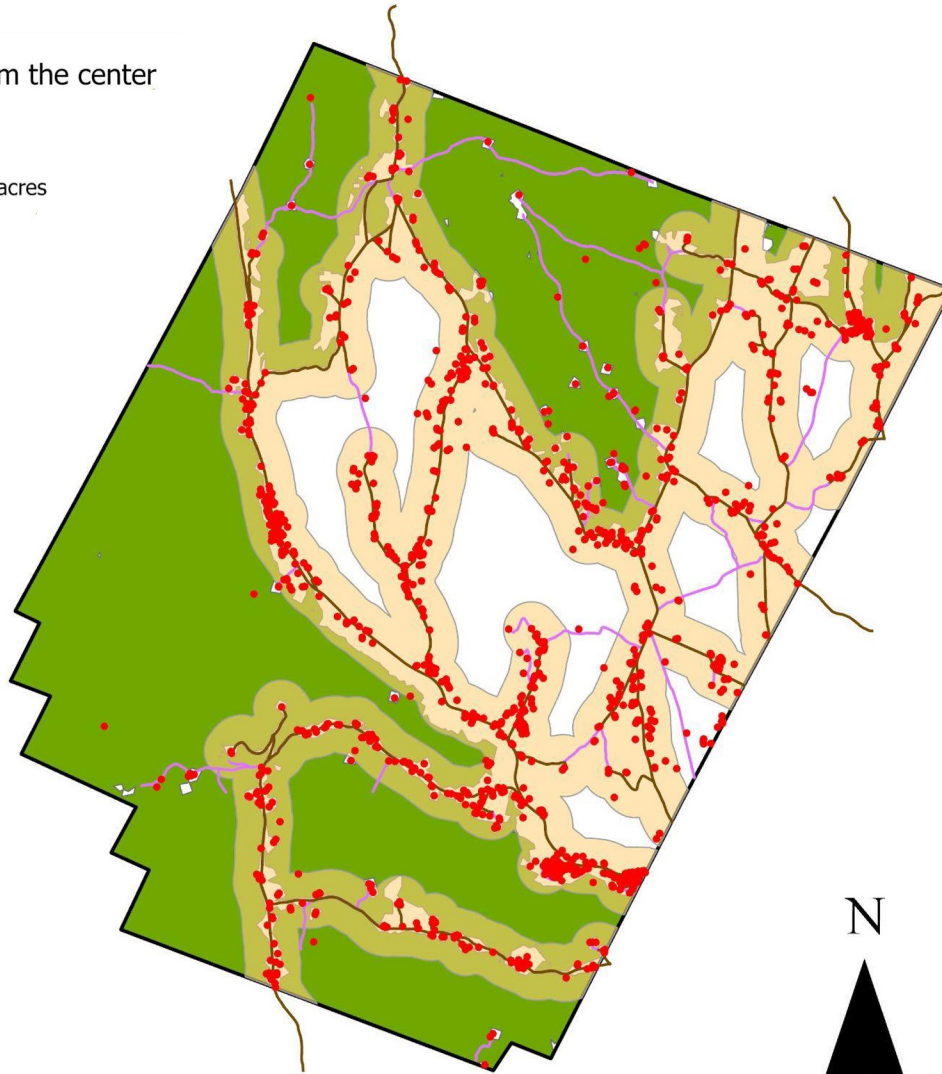
Braintree Class 4 and private roads

Braintree acreage within 1200 ft of a road

Braintree land not within a forest block

Braintree forest blocks

0 0.75 1.5 3 Miles



Braintree land more than 2,000 feet from the center line of a state or town highway

Braintree total area: 24,670 acres  
Beyond 2,000 ft of a state or town highway: 7,684 acres  
Area within 2,000 ft: 68.85%  
Area beyond 2,000 ft: 31.15%

E911 points

Braintree state and town highways

Braintree Class 4 and private roads

Braintree acreage within 2000 ft of a road

Braintree land not within a forest block

Braintree forest blocks

0 0.75 1.5 3 Miles



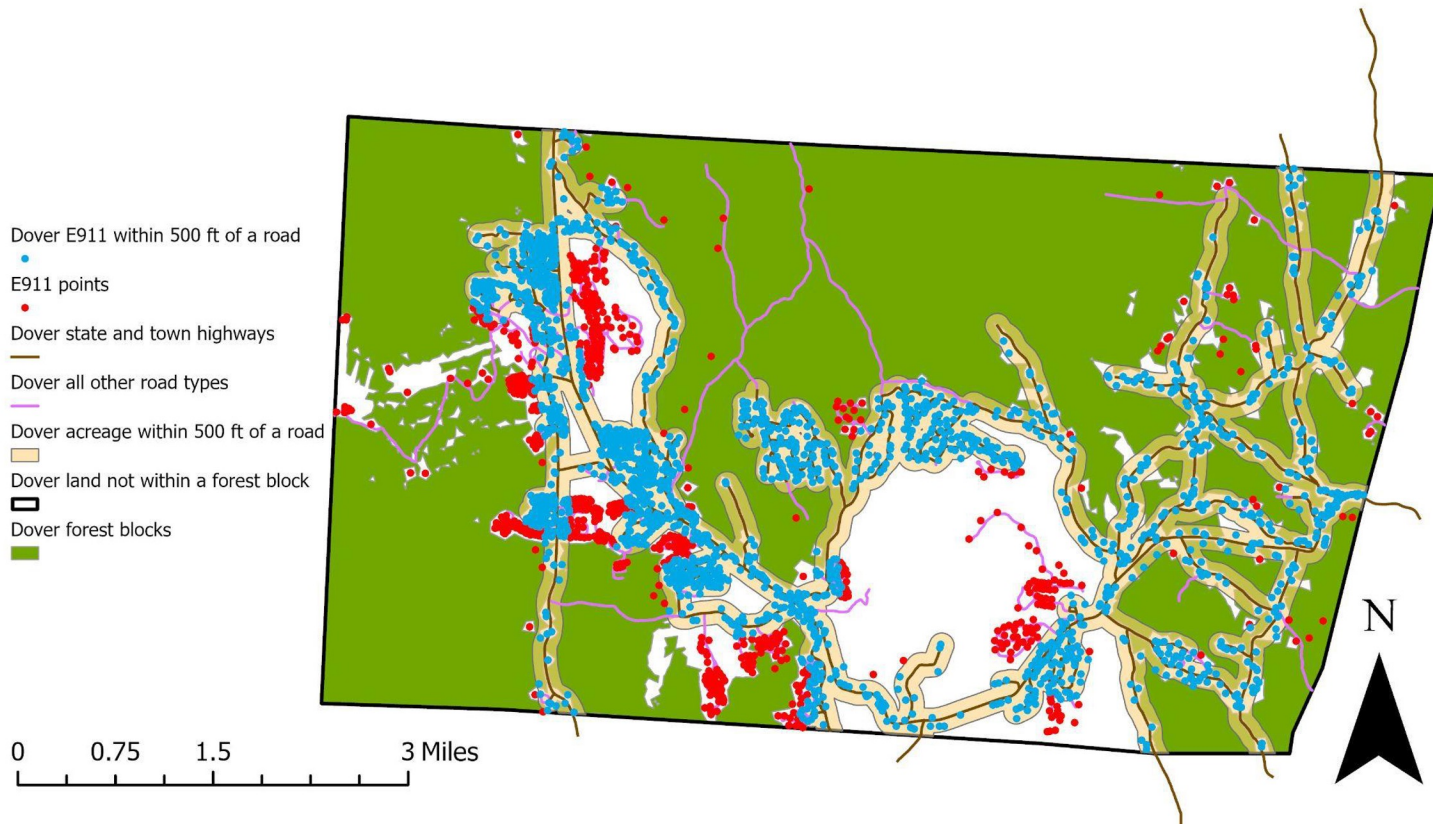
Braintree			
Town		Forests	
Acreage within 500 ft of a road	5,581	Forests within 500 ft of a road	1,166
Acreage beyond 500 ft of a road	19,089	Forests beyond 500 ft of a road	12,551
Percentage within 500 ft	22.62%	Percentage within 500 ft	8.50%
Percentage beyond 500 ft	77.38%	Percentage beyond 500 ft	91.50%
Acreage within 800 ft of a road	8,500	Forests within 800 ft of a road	2,311
Acreage beyond 800 ft of a road	16,170	Forests beyond 800 ft of a road	11,406
Percentage within 800 ft	34.45%	Percentage within 800 ft	16.84%
Percentage beyond 800 ft	65.55%	Percentage beyond 800 ft	83.16%
Acreage within 1,200 ft of a road	11,910	Forests within 1200 ft of a road	3,949
Acreage beyond 1,200 ft of a road	12,760	Forests beyond 1200 ft of a road	9,767
Percentage within 1,200 ft	48.28%	Percentage within 1200 ft	28.79%
Percentage beyond 1,200 ft	51.72%	Percentage beyond 1200 ft	71.21%
Acreage within 2,000 ft of a road	16,987	Forests within 2000 ft of a road	6,819
Acreage beyond 2,000 ft of a road	7,684	Forests beyond 2000 ft of a road	6,897
Percentage within 2,000 ft	68.85%	Percentage within 2000 ft	49.72%
Percentage beyond 2,000 ft	31.15%	Percentage beyond 2000 ft	50.28%
Total Town Area	24,670	Total Forest Area	13,717
		Percentage of town that is forested	55.60%



## Dover land more than 500 feet from the center line of a state or town highway

Dover total area: 22,947 acres  
 Beyond 500 ft of a state or town highway: 16,621 acres  
 Area within 500 ft: 27.57%  
 Area beyond 500 ft: 72.43%

Dover Total E911 Points	2,592
E911 Points within 500 ft of a state or town road	1,911
Percentage within 500 ft	73.73%



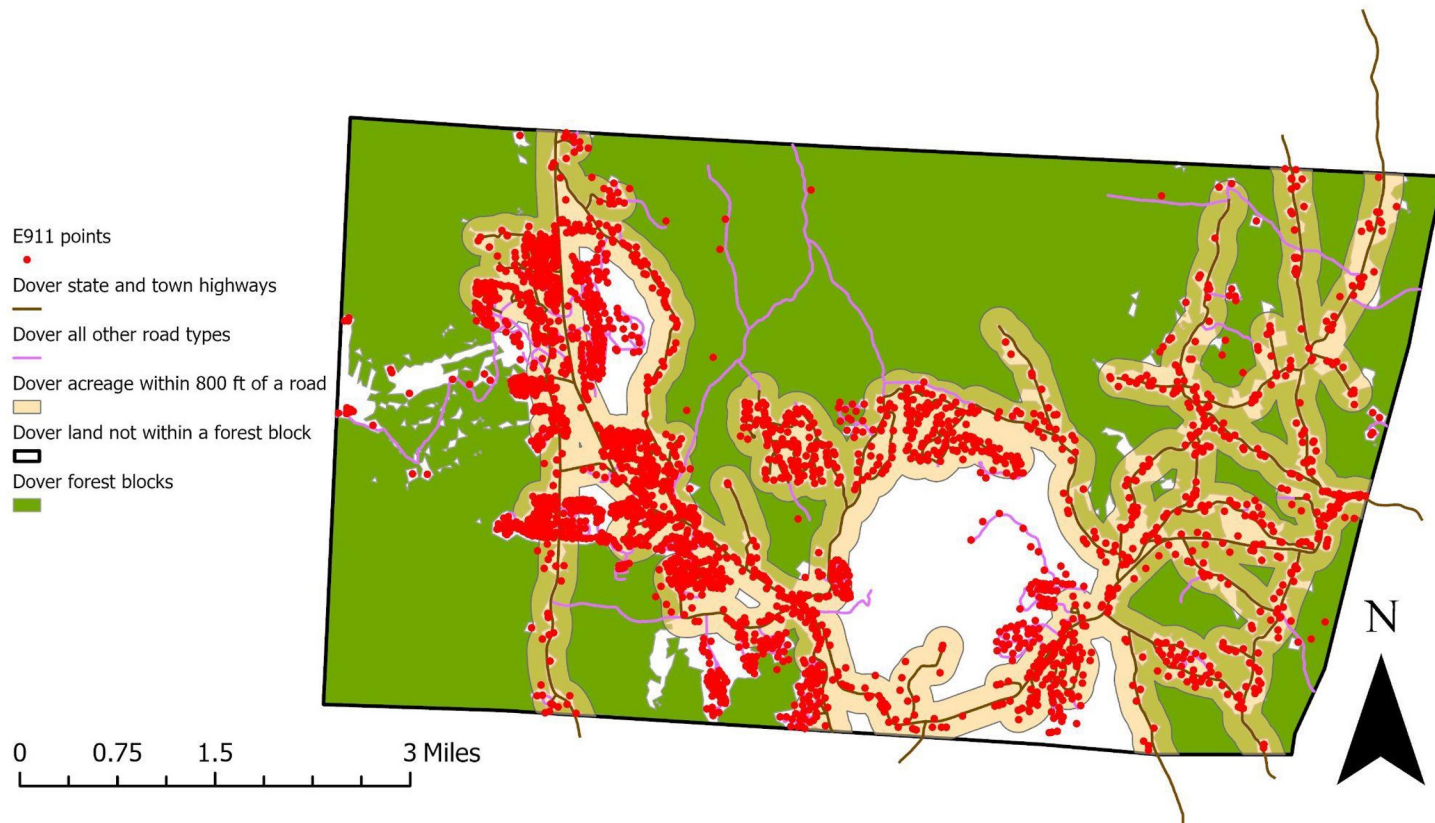
## Dover land more than 800 feet from the center line of a state or town highway

Dover total area: 22,947 acres

Beyond 800 ft of a state or town highway: 13,990 acres

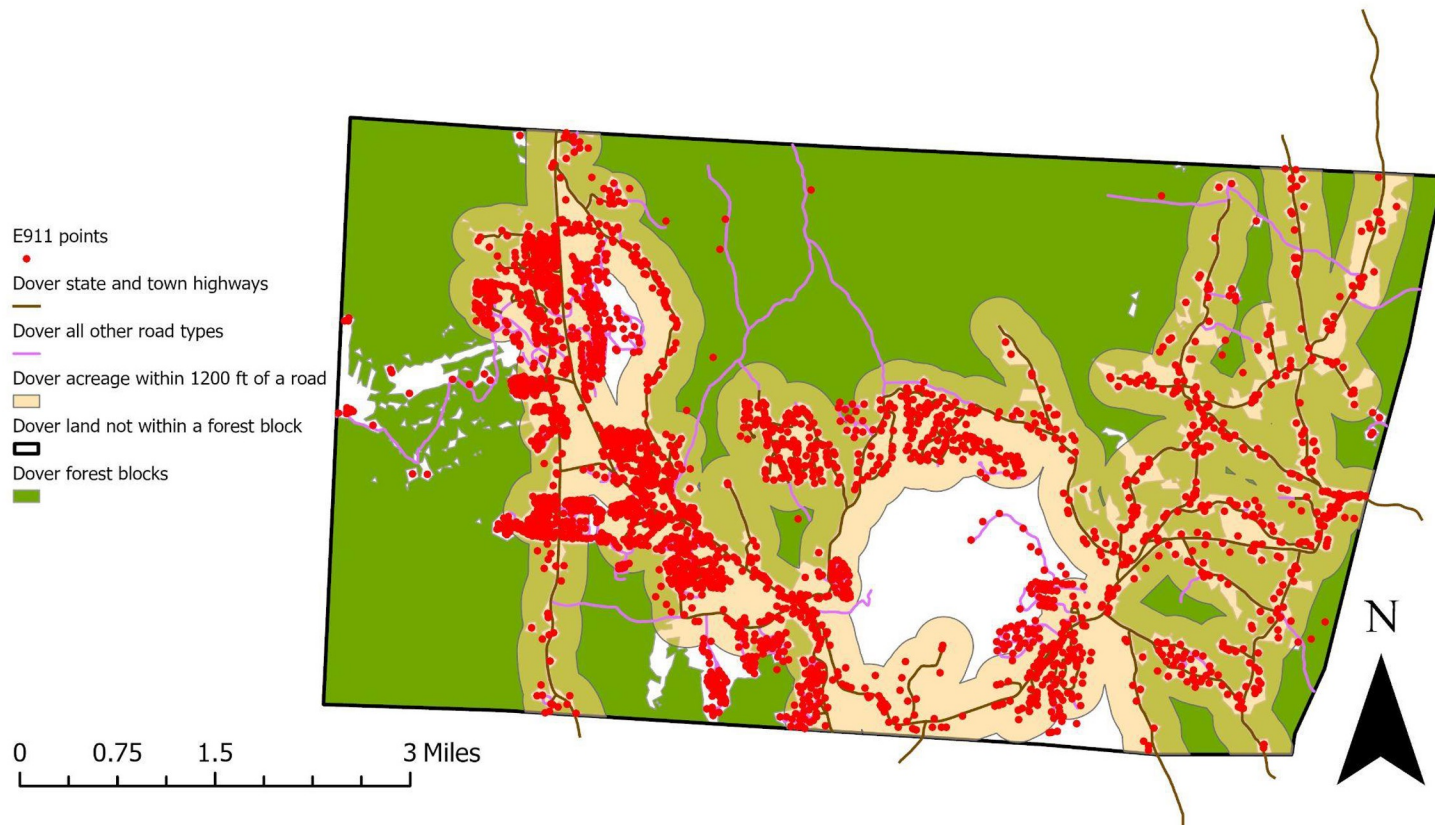
Area within 800 ft: 39.03%

Area beyond 800 ft: 60.97%



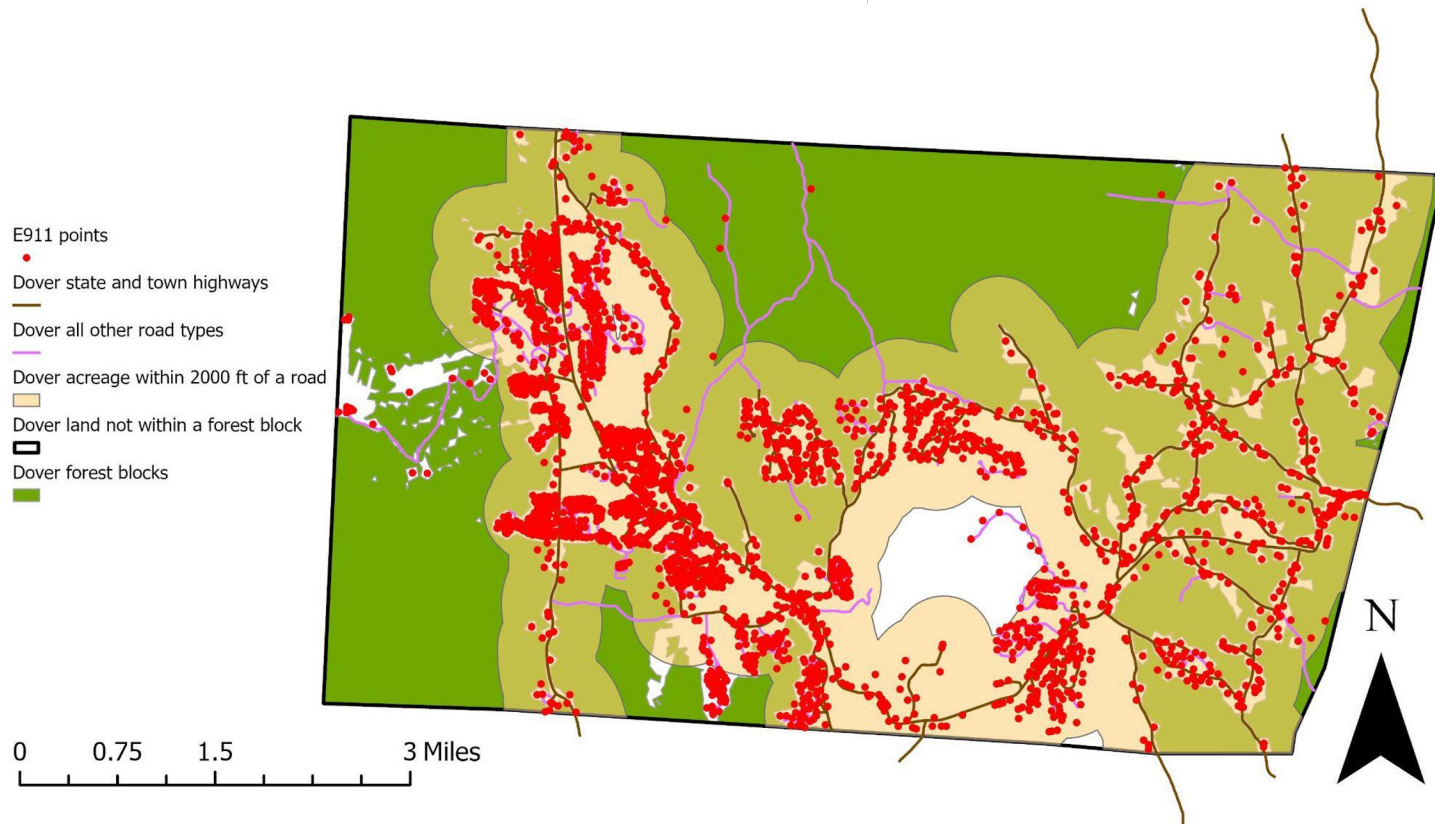
## Dover land more than 1,200 feet from the center line of a state or town highway

Dover total area: 22,947 acres  
Beyond 1,200 ft of a state or town highway: 11,184 acres  
Area within 1,200 ft: 51.26%  
Area beyond 1,200 ft: 48.74%



## Dover land more than 2,000 feet from the center line of a state or town highway

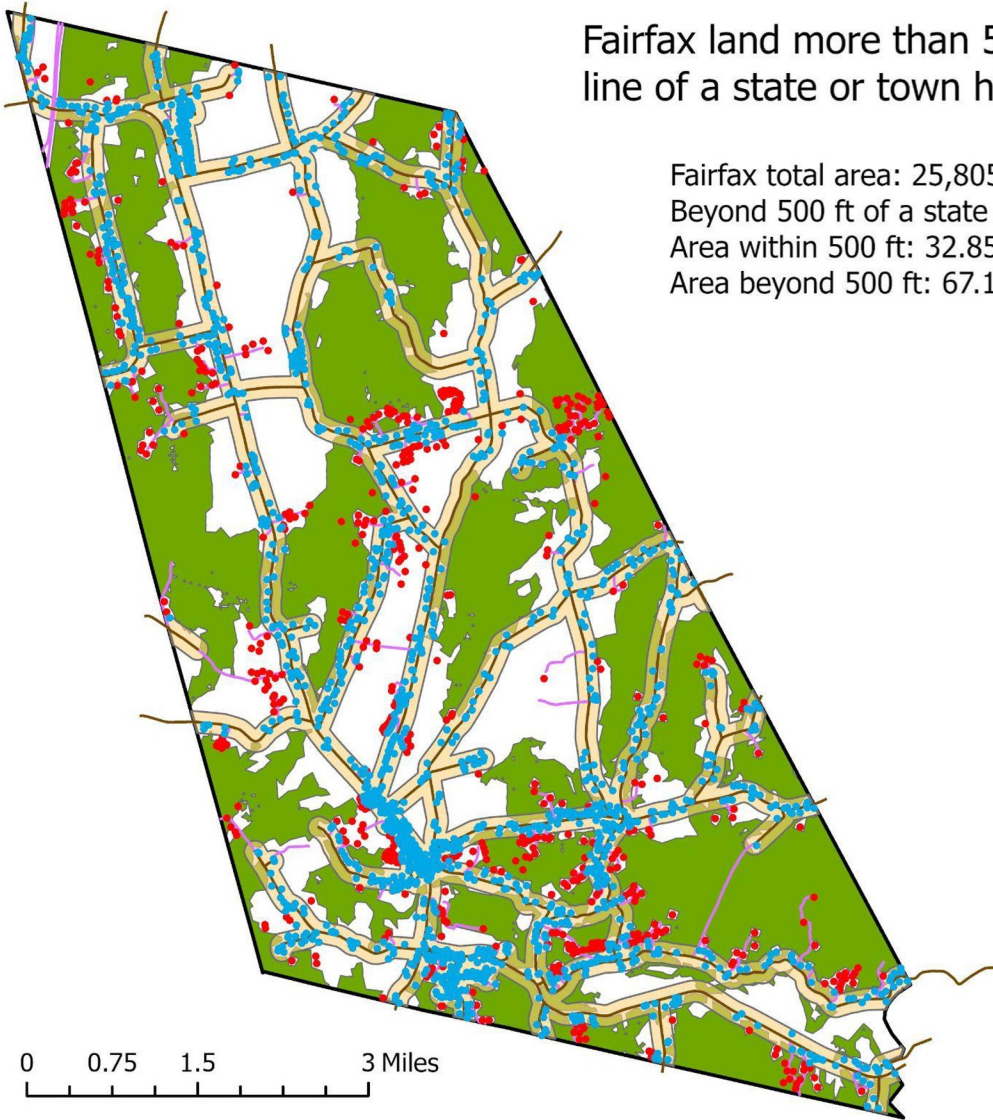
Dover total area: 22,947 acres  
Beyond 2,000 ft of a state or town highway: 7,692 acres  
Area within 2,000 ft: 66.48%  
Area beyond 2,000 ft: 33.52%



Dover			
Town		Forests	
Acreage within 500 ft of a road	6326	Forests within 500 ft of a road	1,600
Acreage beyond 500 ft of a road	16,621	Forests beyond 500 ft of a road	12,813
Percentage within 500 ft	27.57%	Percentage within 500 ft	11.10%
Percentage beyond 500 ft	72.43%	Percentage beyond 500 ft	88.90%
Acreage within 800 ft of a road	8957	Forests within 800 ft of a road	3,169
Acreage beyond 800 ft of a road	13,990	Forests beyond 800 ft of a road	11,243
Percentage within 800 ft	39.03%	Percentage within 800 ft	21.99%
Percentage beyond 800 ft	60.97%	Percentage beyond 800 ft	78.01%
Acreage within 1,200 ft of a road	11763	Forests within 1200 ft of a road	5,074
Acreage beyond 1,200 ft of a road	11,184	Forests beyond 1200 ft of a road	9,339
Percentage within 1,200 ft	51.26%	Percentage within 1200 ft	35.20%
Percentage beyond 1,200 ft	48.74%	Percentage beyond 1200 ft	64.80%
Acreage within 2,000 ft of a road	15255	Forests within 2000 ft of a road	7,630
Acreage beyond 2,000 ft of a road	7,692	Forests beyond 2000 ft of a road	6,782
Percentage within 2,000 ft	66.48%	Percentage within 2000 ft	52.94%
Percentage beyond 2,000 ft	33.52%	Percentage beyond 2000 ft	47.06%
Total Town Area	22947	Total Forest Area	14,412
		Percentage of town that is forested	62.81%

## Fairfax land more than 500 feet from the center line of a state or town highway

Fairfax total area: 25,805 acres  
 Beyond 500 ft of a state or town highway: 17,329 acres  
 Area within 500 ft: 32.85%  
 Area beyond 500 ft: 67.15%



- Fairfax E911
  - within 500 ft of a road
  - E911 points
- Fairfax state and town highways
- Fairfax Class 4 and private roads
- Fairfax acreage within 500 ft of a road
- Fairfax land not within a forest block
- Fairfax forest blocks

Fairfax Total E911 Points	2,231
E911 Points within 500 ft of a state or town road	1,683
Percentage within 500 ft	75.44%

# Fairfax land more than 800 feet from the center line of a state or town highway

Fairfax total area: 25,805 acres  
Beyond 800 ft of a state or town highway: 13,019 acres  
Area within 800 ft: 49.55%  
Area beyond 800 ft: 50.45%



- E911 points
- Fairfax state and town highways
- Fairfax Class 4 and private roads
- Fairfax acreage
  - within 800 ft of a road
  - Fairfax land not within a forest block
  - Fairfax forest blocks

0 0.75 1.5 3 Miles



### Fairfax land more than 1,200 feet from the center line of a state or town highway

Fairfax total area: 25,805 acres  
Beyond 1,200 ft of a state or town highway: 8,128 acres  
Area within 1,200 ft: 68.29%  
Area beyond 1,200 ft: 31.71%



- E911 points
- Fairfax state and town highways
- Fairfax Class 4 and private roads
- Fairfax acreage within 1200 ft of a road
- Fairfax land not within a forest block
- Fairfax forest blocks

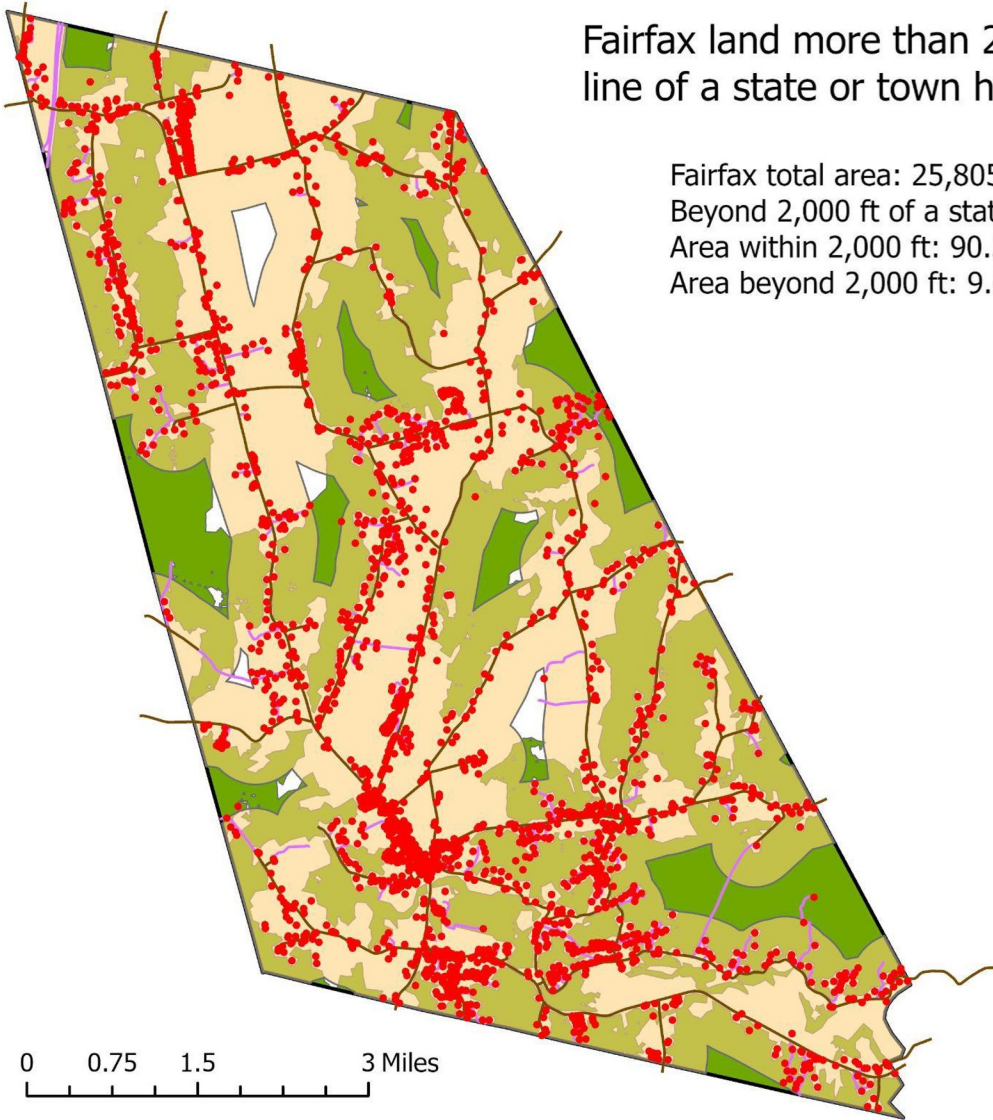


0 0.75 1.5 3 Miles



# Fairfax land more than 2,000 feet from the center line of a state or town highway

Fairfax total area: 25,805 acres  
Beyond 2,000 ft of a state or town highway: 2,493 acres  
Area within 2,000 ft: 90.34%  
Area beyond 2,000 ft: 9.66%



- E911 points
- Fairfax state and town highways
- Fairfax Class 4 and private roads
- Fairfax acreage within 2000 ft of a road
- Fairfax land not within a forest block
- Fairfax forest blocks



0 0.75 1.5 3 Miles

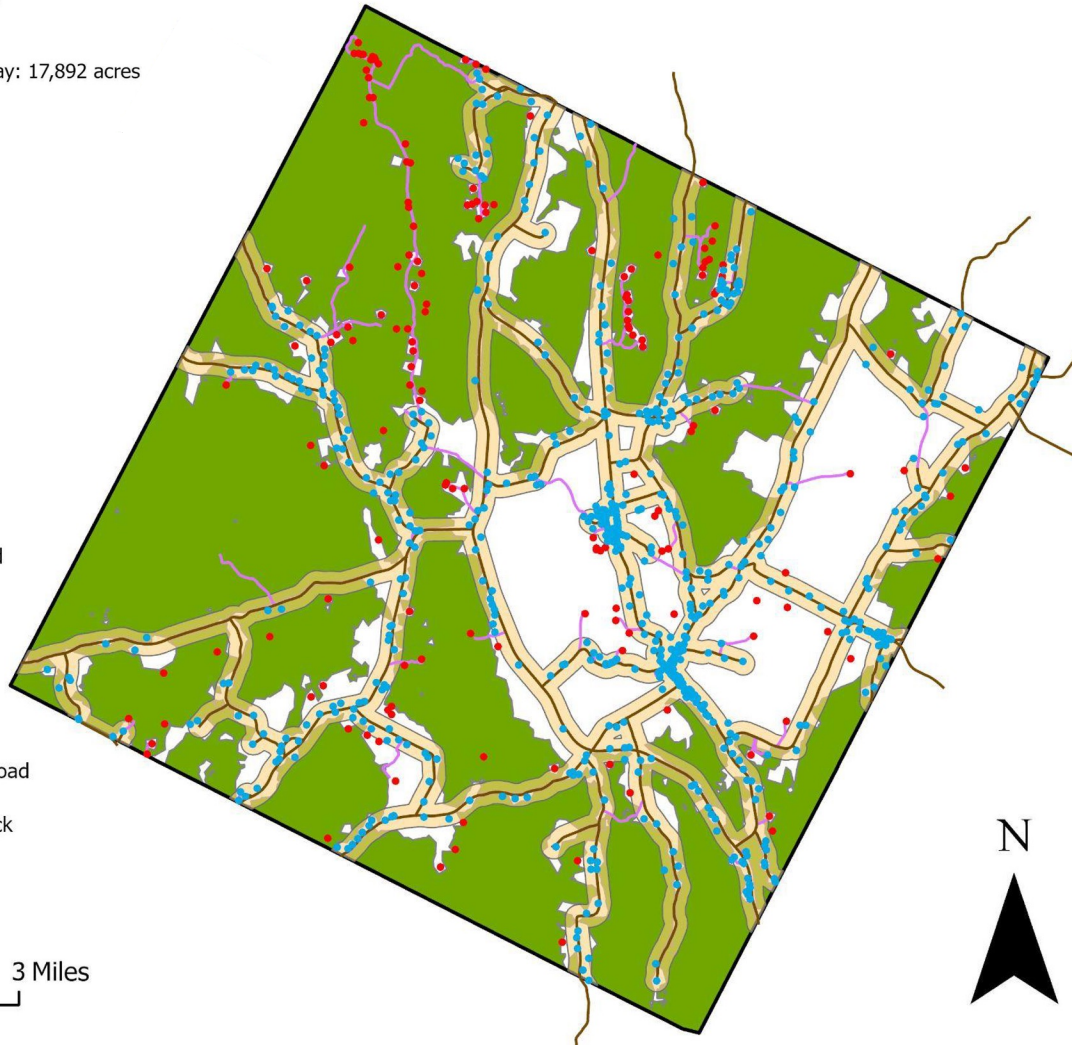
Fairfax			
Town		Forests	
Acreage within 500 ft of a road	8,476	Forests within 500 ft of a road	1,456
Acreage beyond 500 ft of a road	17,329	Forests beyond 500 ft of a road	10,127
Percentage within 500 ft	32.85%	Percentage within 500 ft	12.57%
Percentage beyond 500 ft	67.15%	Percentage beyond 500 ft	87.43%
Acreage within 800 ft of a road	12,786	Forests within 800 ft of a road	3,144
Acreage beyond 800 ft of a road	13,019	Forests beyond 800 ft of a road	8,439
Percentage within 800 ft	49.55%	Percentage within 800 ft	27.14%
Percentage beyond 800 ft	50.45%	Percentage beyond 800 ft	72.86%
Acreage within 1,200 ft of a road	17,623	Forests within 1200 ft of a road	5,606
Acreage beyond 1,200 ft of a road	8,182	Forests beyond 1200 ft of a road	5,977
Percentage within 1,200 ft	68.29%	Percentage within 1200 ft	48.40%
Percentage beyond 1,200 ft	31.71%	Percentage beyond 1200 ft	51.60%
Acreage within 2,000 ft of a road	23,312	Forests within 2000 ft of a road	9,439
Acreage beyond 2,000 ft of a road	2,493	Forests beyond 2000 ft of a road	2,144
Percentage within 2,000 ft	90.34%	Percentage within 2000 ft	81.49%
Percentage beyond 2,000 ft	9.66%	Percentage beyond 2000 ft	18.51%
<b>Total Town Area</b>	<b>25,805</b>	<b>Total Forest Area</b>	<b>11,583</b>
		<b>Percentage of town that is forested</b>	<b>44.89%</b>

Craftsbury land more than 500 feet from the center line of a state or town highway

Craftsbury total area: 25,316 acres  
 Beyond 500 ft of a state or town highway: 17,892 acres  
 Area within 500 ft: 29.33%  
 Area beyond 500 ft: 70.67%

- Craftsbury E911 within 500 ft of a road ●
- E911 points ●
- Craftsbury state and town highways —
- Craftsbury Class 4 and private roads —
- Craftsbury acreage within 500 ft of a road ■
- Craftsbury land not within a forest block ■
- Craftsbury forest blocks ■

0 0.75 1.5 3 Miles



Craftsbury Total E911 Points	820
E911 Points within 500 ft of a state or town road	659
Percentage within 500 ft	80.37%

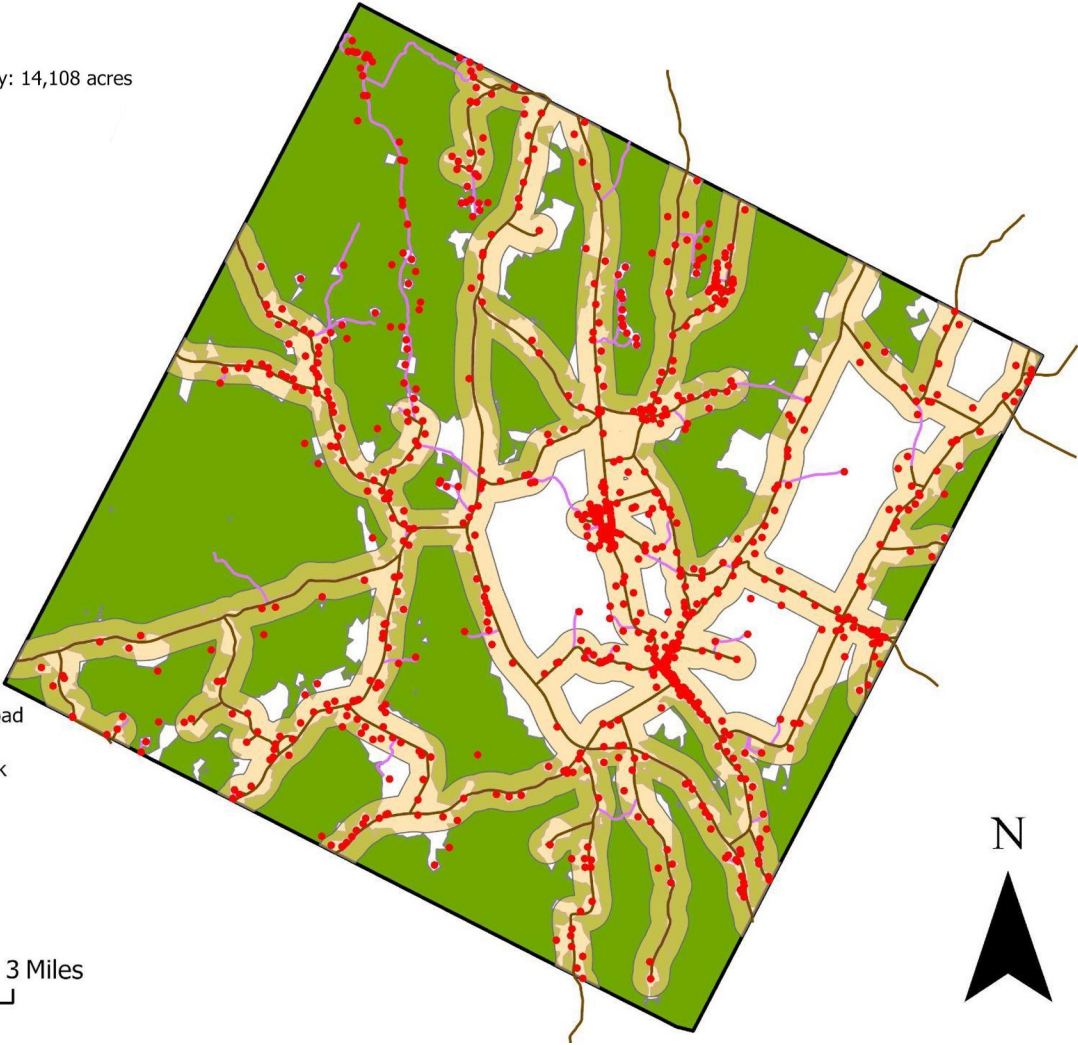


Craftsbury land more than 800 feet from the center line of a state or town highway

Craftsbury total area: 25,316 acres  
Beyond 800 ft of a state or town highway: 14,108 acres  
Area within 800 ft: 44.27%  
Area beyond 800 ft: 55.73%

- E911 points
- Craftsbury state and town highways
- Craftsbury Class 4 and private roads
- Craftsbury acreage within 800 ft of a road
- Craftsbury land not within a forest block
- Craftsbury forest blocks

0 0.75 1.5 3 Miles

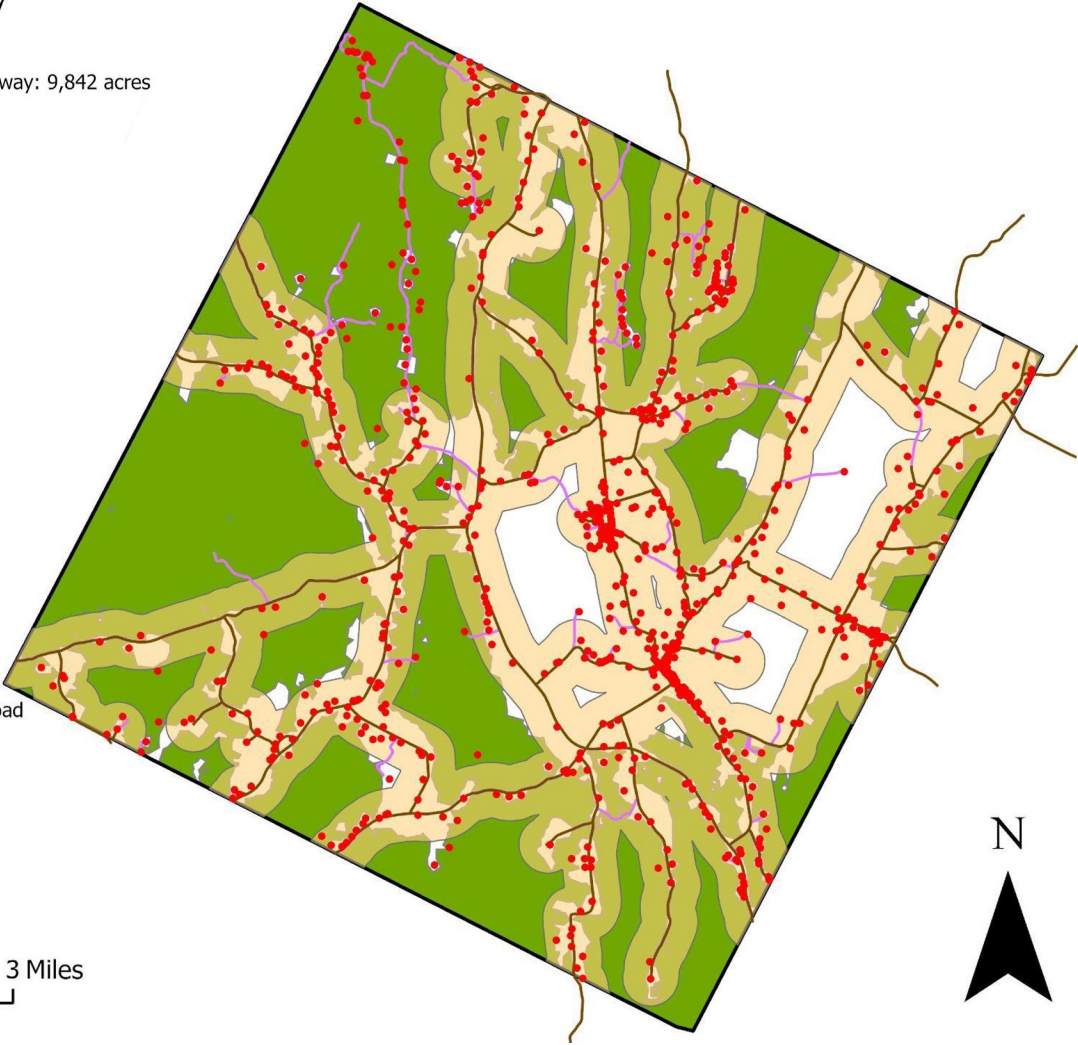


# Craftsbury land more than 1,200 feet from the center line of a state or town highway

Craftsbury total area: 25,316 acres  
Beyond 1,200 ft of a state or town highway: 9,842 acres  
Area within 1,200 ft: 81.72%  
Area beyond 1,200 ft: 18.28%

- E911 points
- Craftsbury state and town highways
- Craftsbury Class 4 and private roads
- Craftsbury acreage within 1200 ft of a road
- Craftsbury land not within a forest block
- Craftsbury forest blocks

0 0.75 1.5 3 Miles

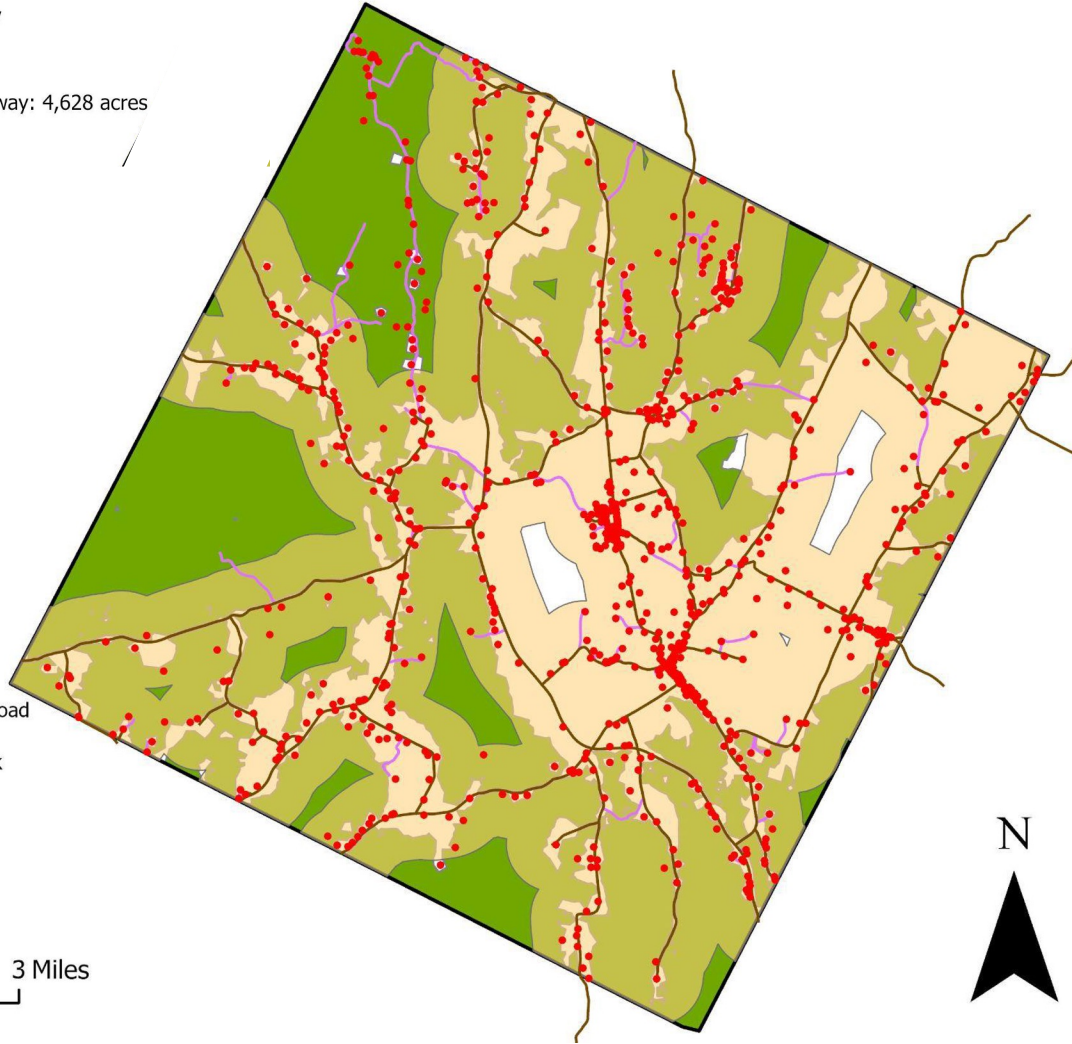


Craftsbury land more than 2,000 feet from the center line of a state or town highway

Craftsbury total area: 25,316 acres  
Beyond 2,000 ft of a state or town highway: 4,628 acres  
Area within 2,000 ft: 81.72%  
Area beyond 2,000 ft: 18.28%

- E911 points
- Craftsbury state and town highways
- Craftsbury Class 4 and private roads
- Craftsbury acreage within 2000 ft of a road
- Craftsbury land not within a forest block
- Craftsbury forest blocks

0 0.75 1.5 3 Miles



Craftsbury			
Town		Forests	
Acreage within 500 ft of a road	7,424	Forests within 500 ft of a road	2,212
Acreage beyond 500 ft of a road	17,892	Forests beyond 500 ft of a road	13,282
Percentage within 500 ft	29.33%	Percentage within 500 ft	14.28%
Percentage beyond 500 ft	70.67%	Percentage beyond 500 ft	85.72%
Acreage within 800 ft of a road	11,208	Forests within 800 ft of a road	4,356
Acreage beyond 800 ft of a road	14,108	Forests beyond 800 ft of a road	11,138
Percentage within 800 ft	44.27%	Percentage within 800 ft	28.11%
Percentage beyond 800 ft	55.73%	Percentage beyond 800 ft	71.89%
Acreage within 1,200 ft of a road	15,474	Forests within 1200 ft of a road	7,252
Acreage beyond 1,200 ft of a road	9,842	Forests beyond 1200 ft of a road	8,242
Percentage within 1,200 ft	61.12%	Percentage within 1200 ft	46.81%
Percentage beyond 1,200 ft	38.88%	Percentage beyond 1200 ft	53.19%
Acreage within 2,000 ft of a road	20,688	Forests within 2000 ft of a road	11,244
Acreage beyond 2,000 ft of a road	4,628	Forests beyond 2000 ft of a road	4,249
Percentage within 2,000 ft	81.72%	Percentage within 2000 ft	72.57%
Percentage beyond 2,000 ft	18.28%	Percentage beyond 2000 ft	27.43%
Total Town Area	25,316	Total Forest Area	15,494
		Percentage of town that is forested	61.20%