

# Vermont Education Finance Analysis

House Committees on Ways and Means and Education

Julia Richter, Joint Fiscal Office

April 4, 2024

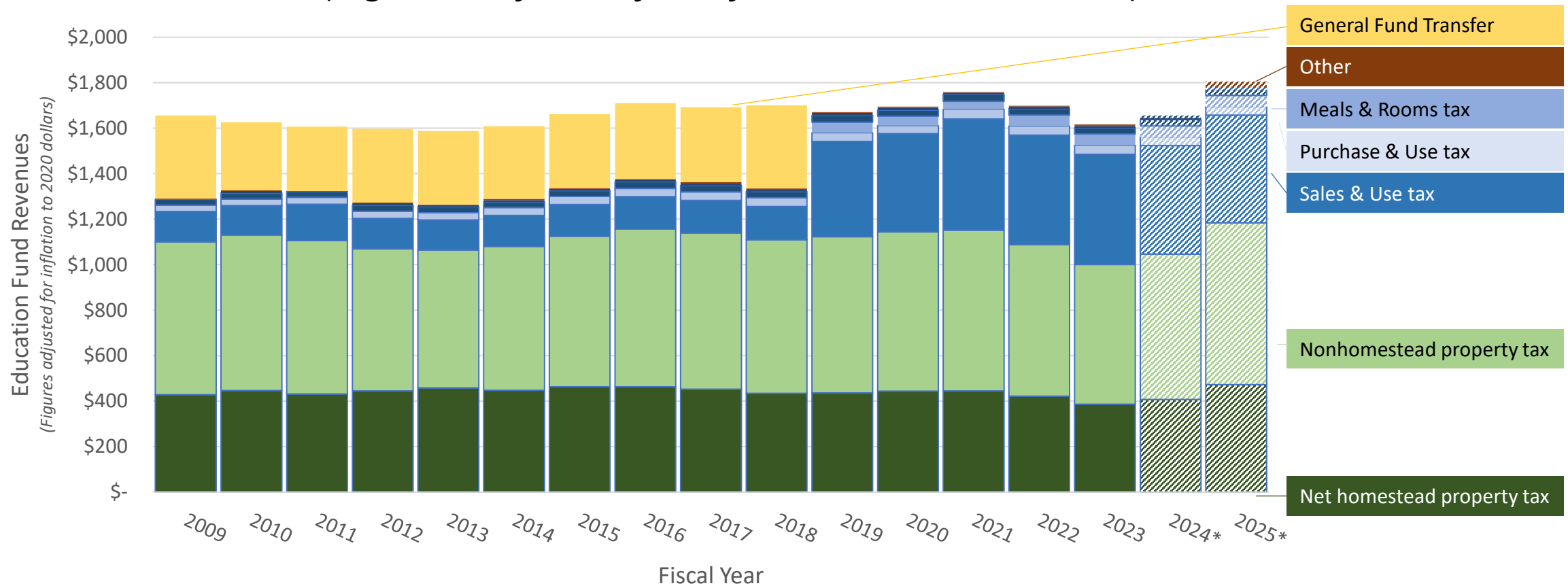


# Education Fund Revenues and Property Taxes



# Real Education Fund Revenue Sources Over Time

(Figures adjusted for inflation to 2020 dollars)

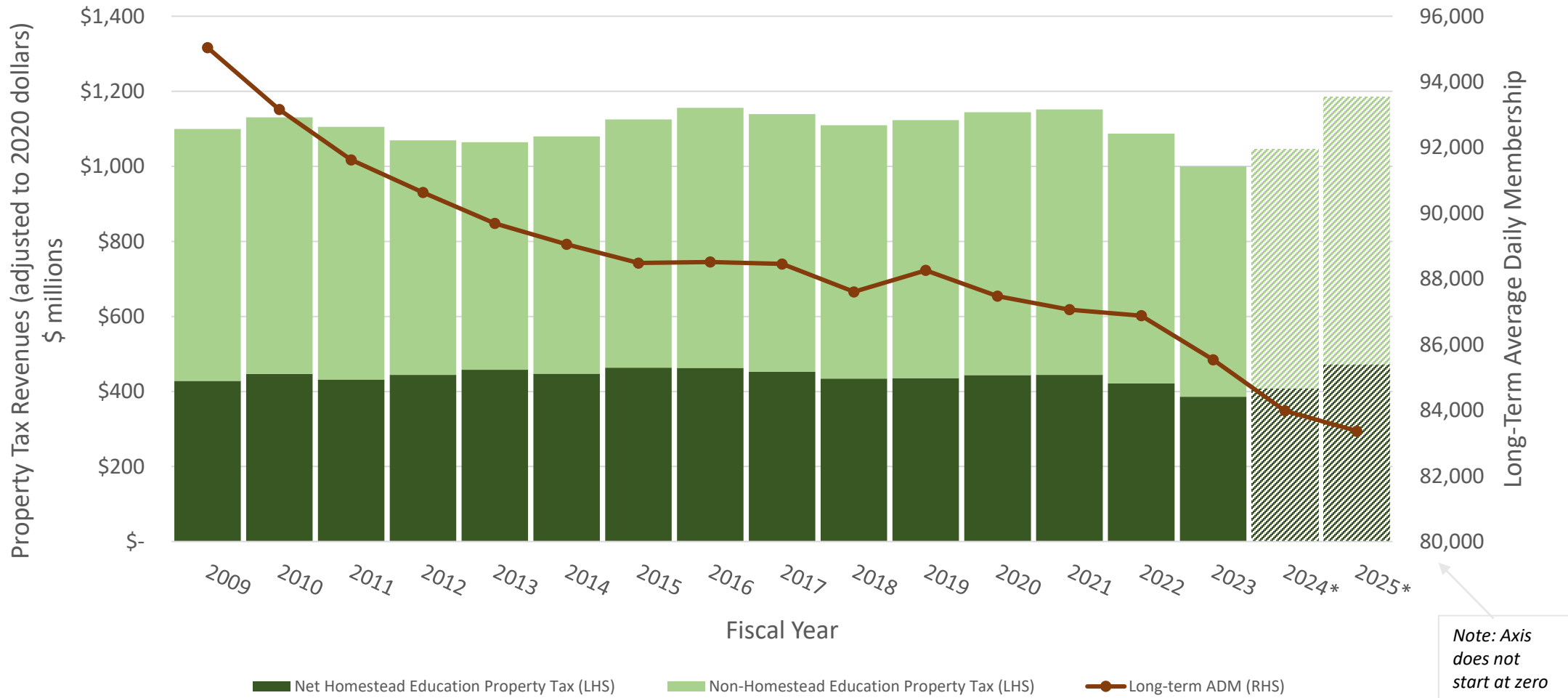


\*Note: 2025 and 2025 reflects latest forecasts and estimates



# Real Education Property Tax and Long-Term ADM Over Time

*(Property taxes adjusted for inflation to 2020 dollars)*

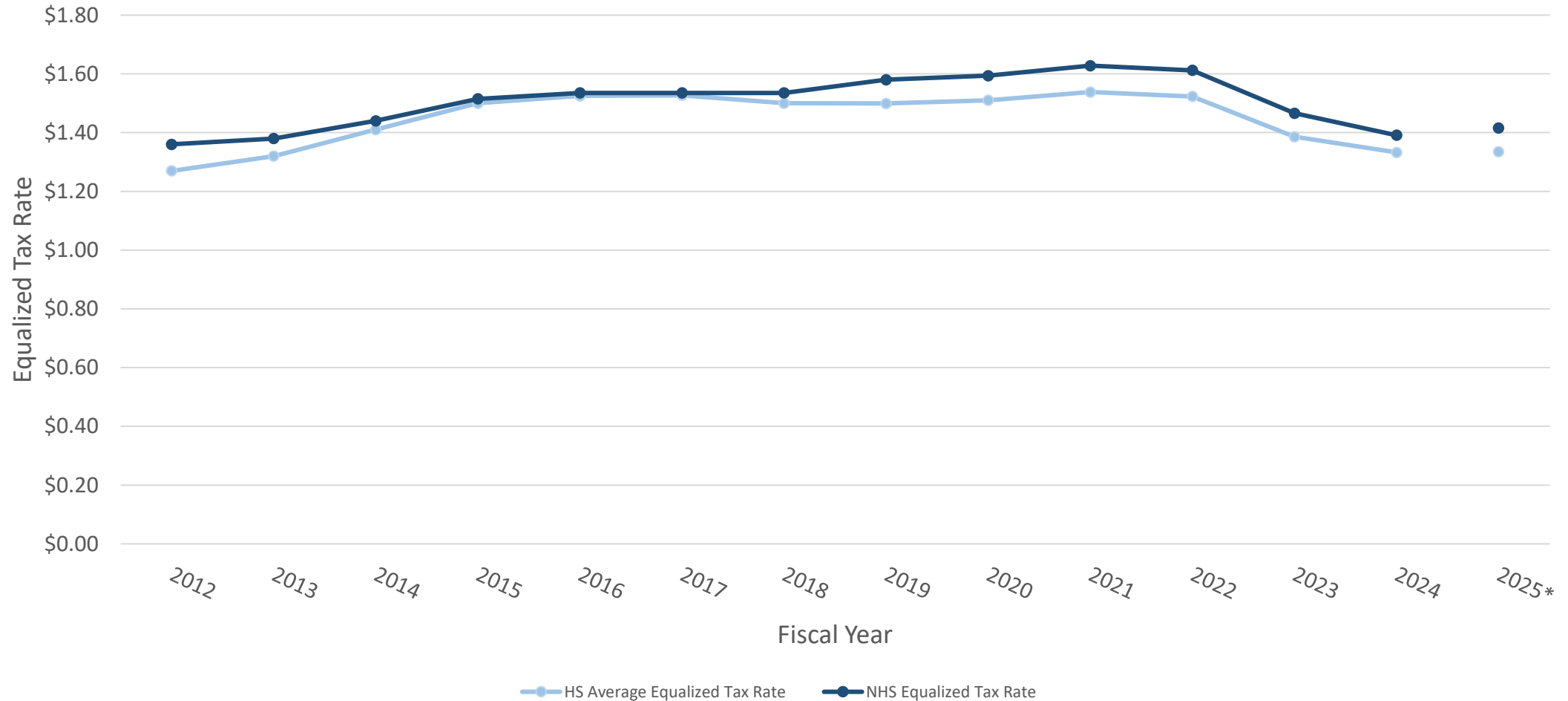


Note: Axis does not start at zero

\*Note: 2025 and 2025 reflects latest forecasts and estimates



# Nominal Equalized Tax Rates Over Time

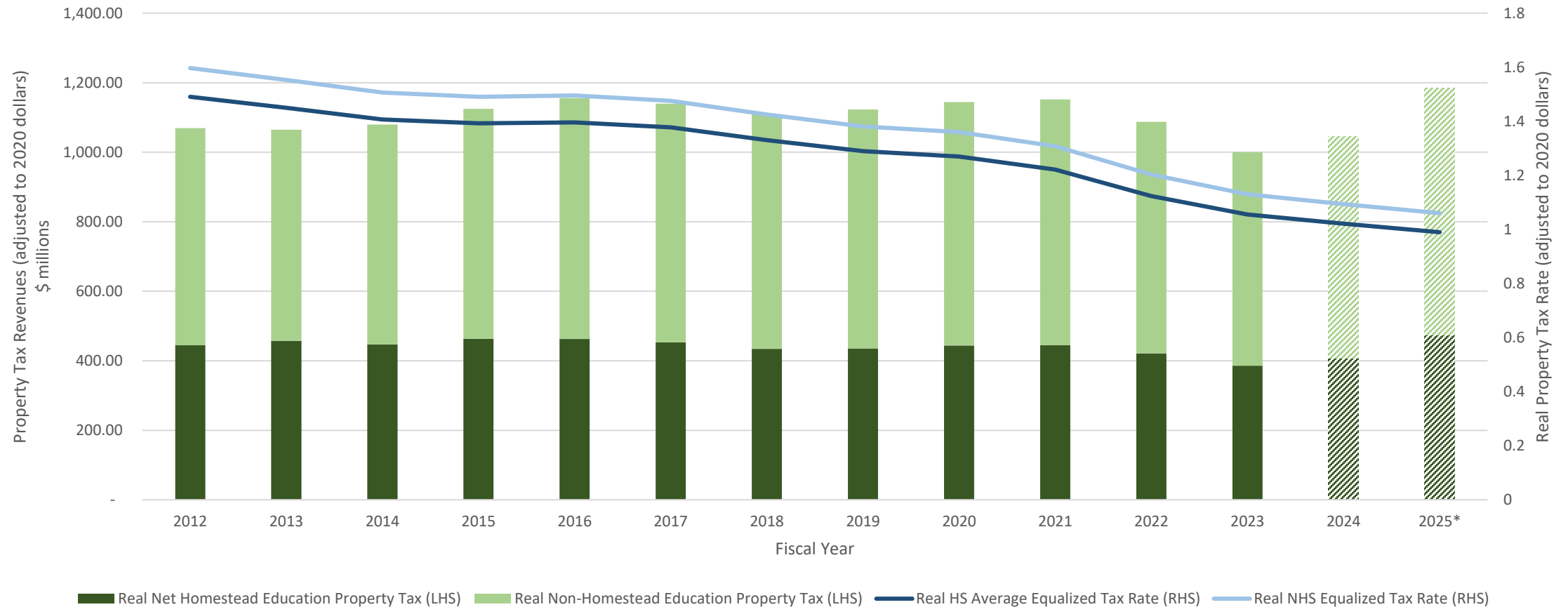


\*Note: 2025 reflects latest forecasts and estimates



# Real Education Property Tax Revenues and Real Equalized Property Tax Rates Over Time

*(Figures adjusted for inflation to 2020 dollars)*



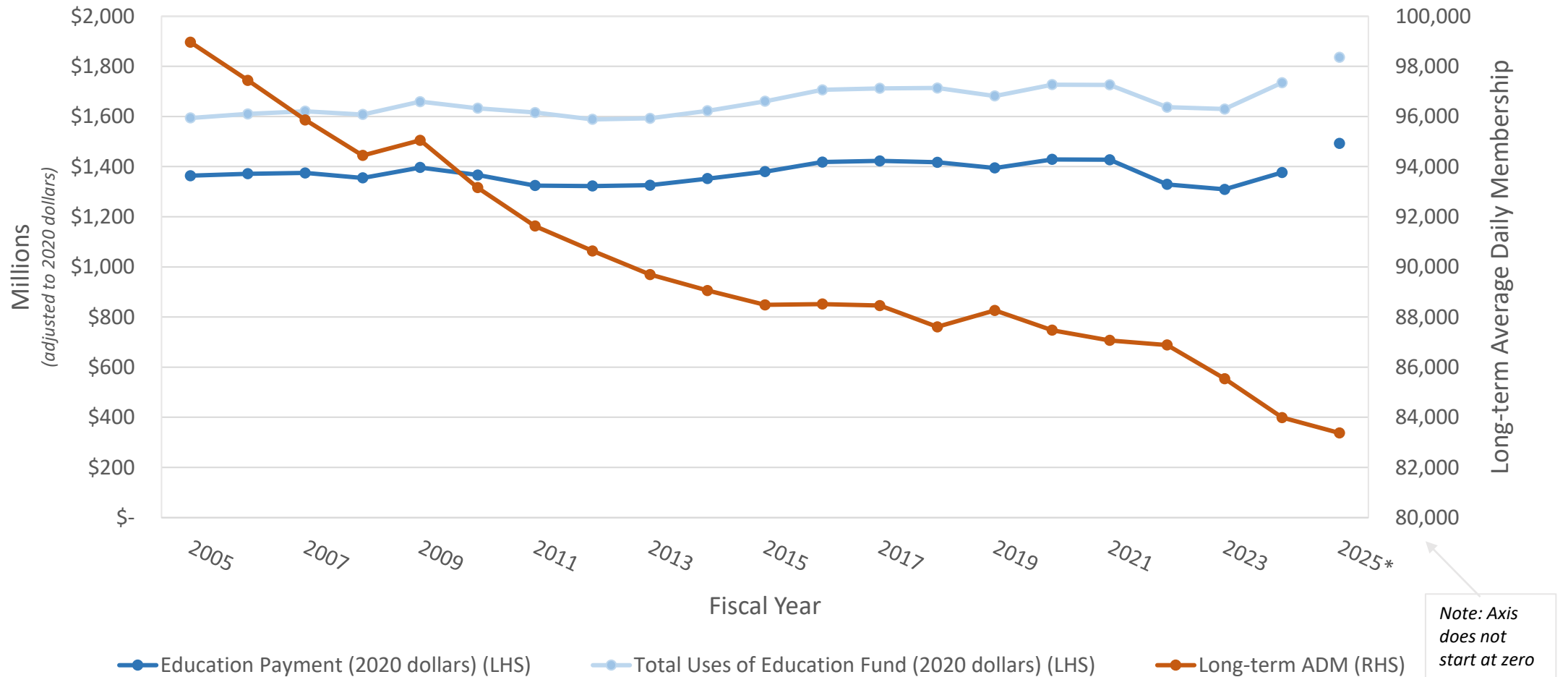
\*Note: 2025 and 2025 reflects latest forecasts and estimates



# Vermont's Spending on Education Over Time



# History of Education Fund Real Appropriations and LTADM (Appropriations adjusted for inflation to 2020 dollars)



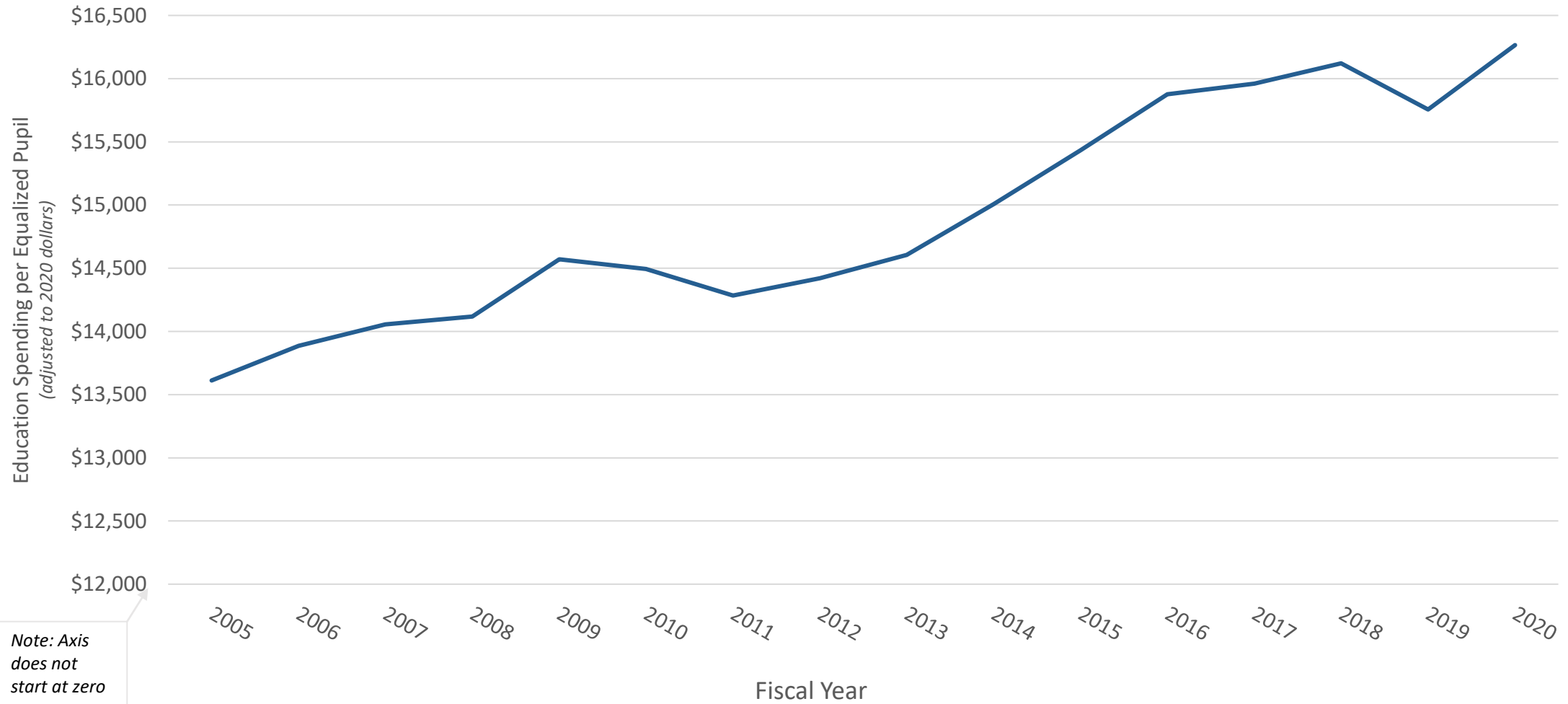
\*Note: 2025 reflects latest projections from Vermont's Agency of Education





# Real Education Spending per Equalized Pupil Over Time

*(Figures adjusted for inflation to 2020 dollars)*

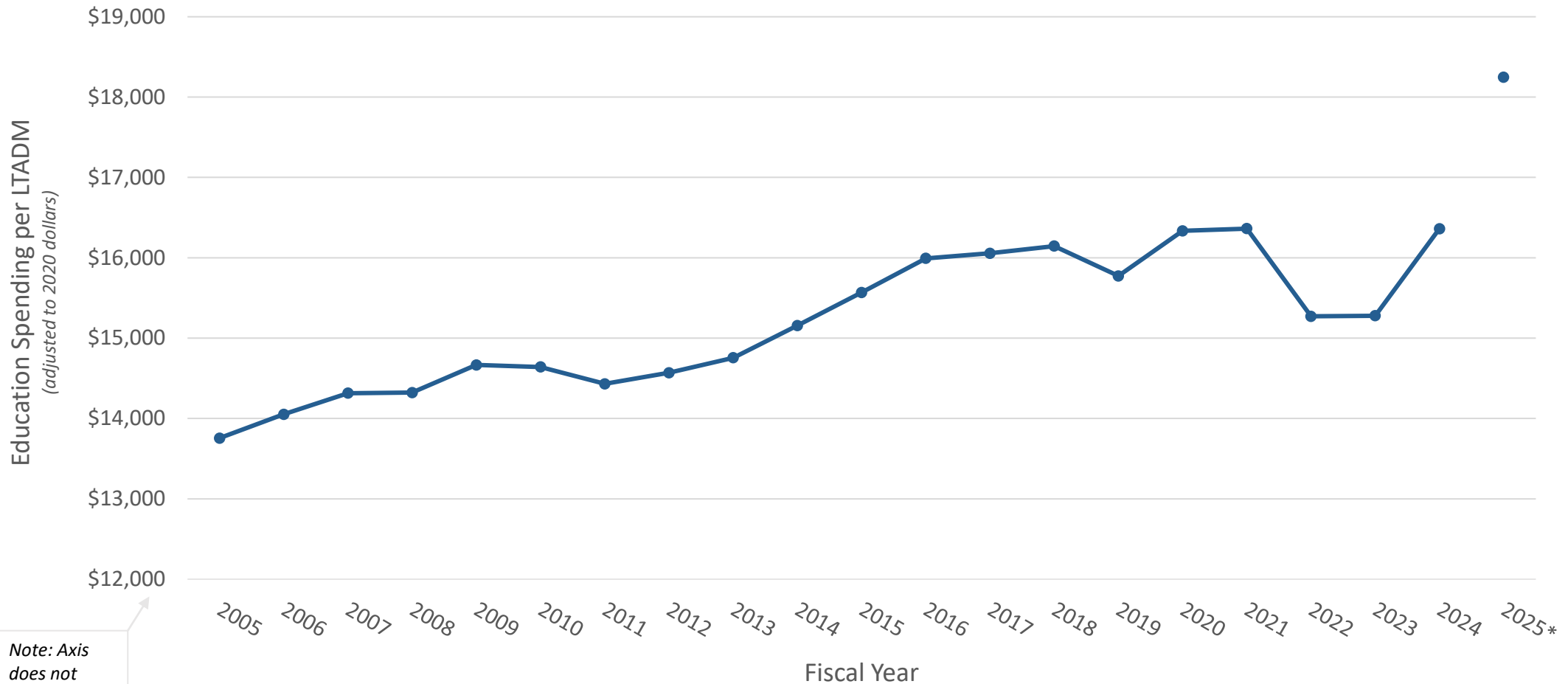


Note: Axis does not start at zero



# Real Education Spending per LTADM Over Time

(Figures adjusted for inflation to 2020 dollars)



Note: Axis does not start at zero

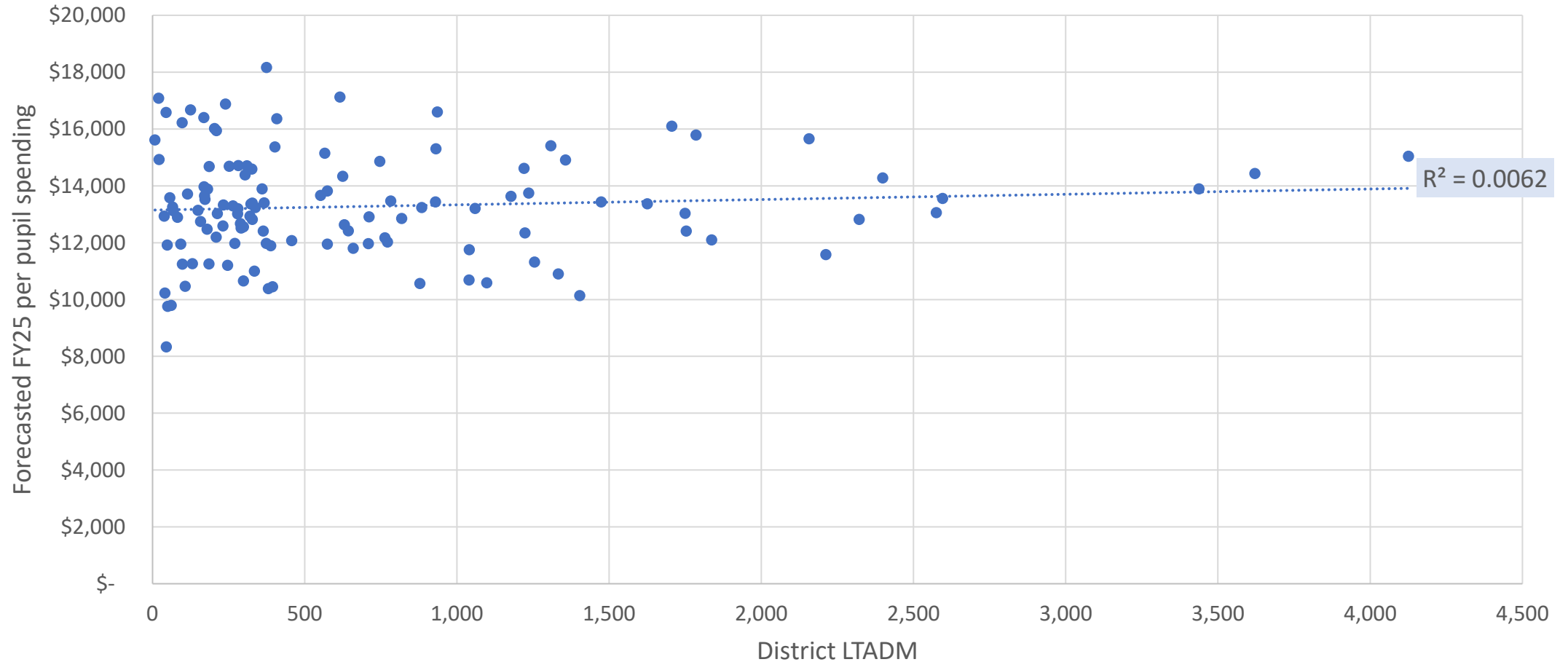
\*Note: 2025 reflects latest projections from Vermont's Agency of Education



# District Characteristics and Forecasted Per Pupil Spending



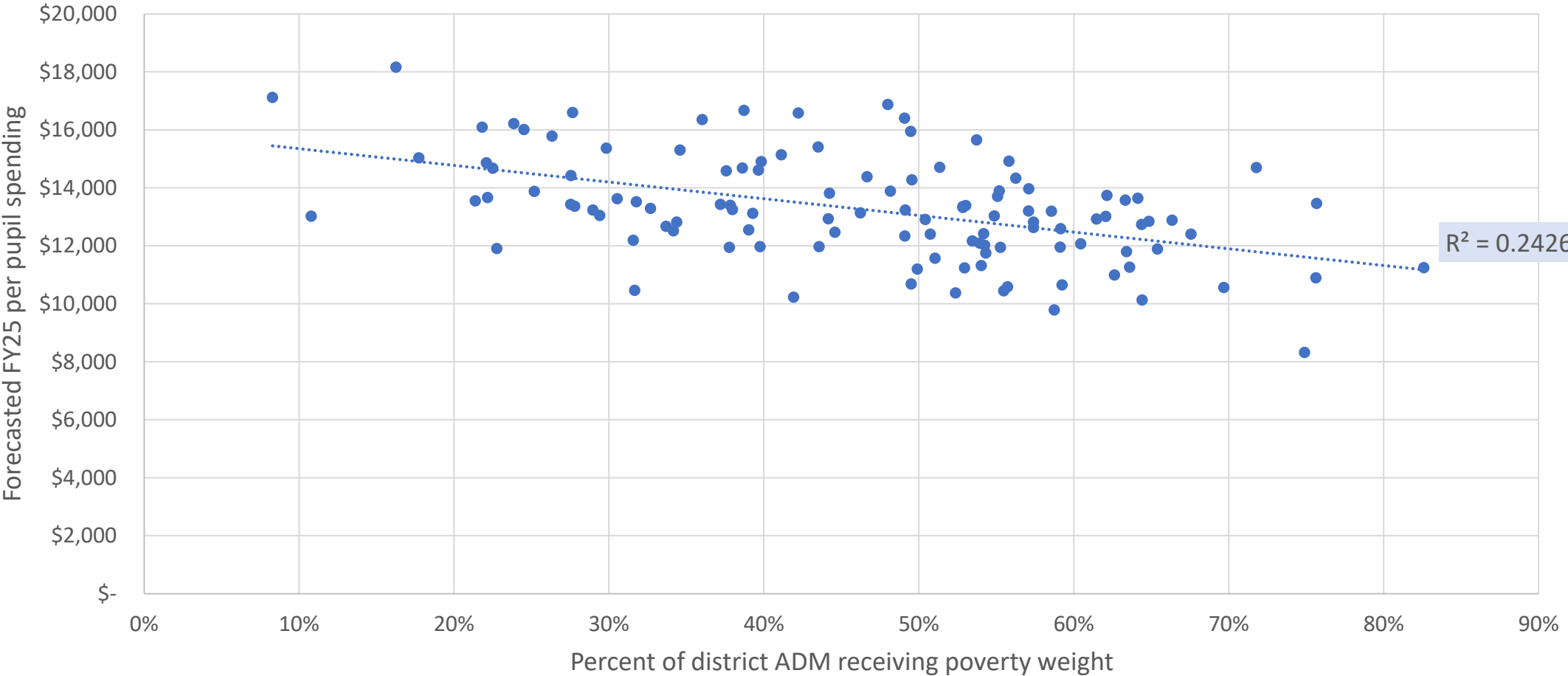
# FY 2025 Per Pupil Spending Forecasts by District LTADM



*Note:  $R^2$  is a measure describing the “goodness of fit” of a model.  $R^2$  ranges from 0 to 1. An  $R^2$  of 0 means that none of the variation can be explained by the relationship. An  $R^2$  of 1 means that all of the variation can be explained by the relationship.*



# FY 2025 Per Pupil Spending Forecasts by District Poverty Level



**Notes:**

1)  $R^2$  is a measure describing the “goodness of fit” of a model.  $R^2$  ranges from 0 to 1. An  $R^2$  of 0 means that none of the variation can be explained by the relationship. An  $R^2$  of 1 means that all of the variation can be explained by the relationship.

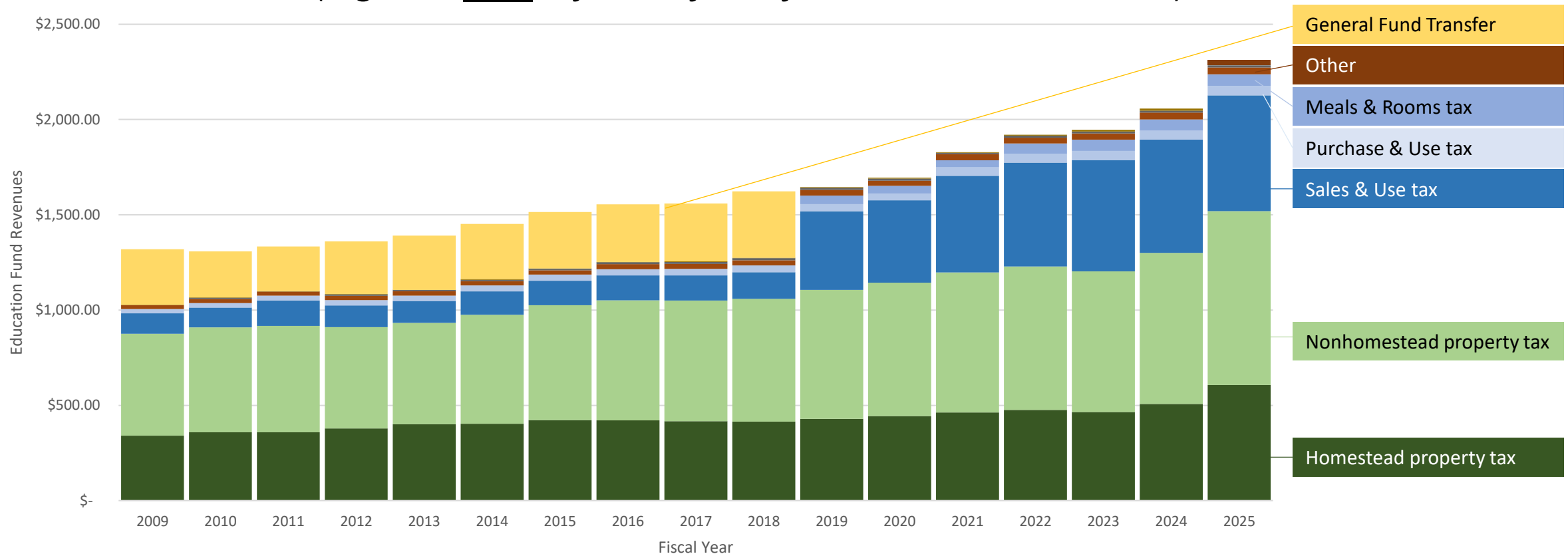


# Questions?



# Nominal Education Fund Revenue Sources Over Time

*(Figures not adjusted for inflation to 2020 dollars)*



\*Note: 2025 reflects latest forecasts and estimates

