



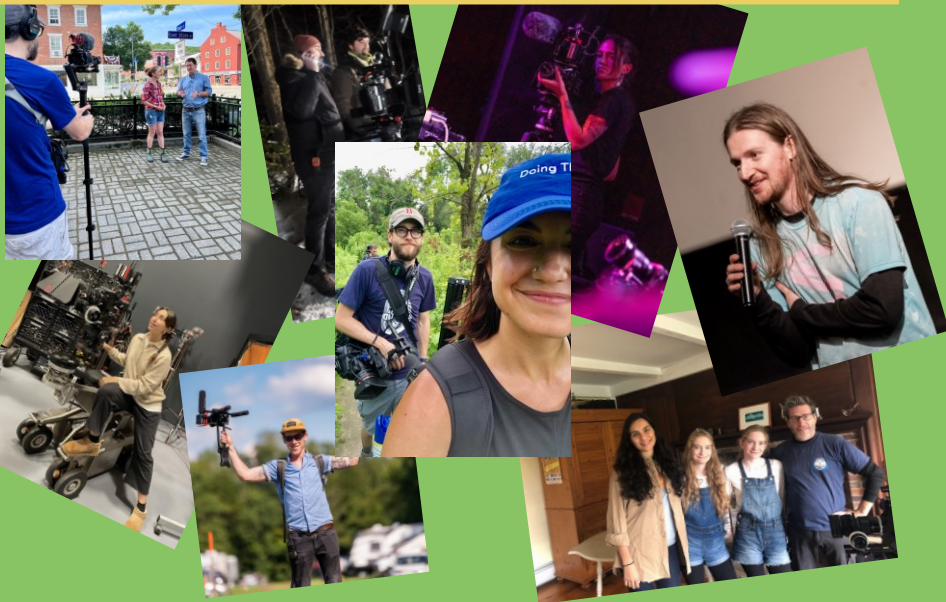
VT Film & Creative Media Industry Testimony

Chad Ervin & Brian Carroll - Vermont Production Collective



What is Vermont Production Collective?

VPC was established in 2021 by working professionals, to support established and aspiring artists in film production and related fields. We exist to facilitate collaboration, mentorships, networking, and more.



BUILDING COMMUNITY

Hosting community gatherings, film screenings and other events

SUPPORTING EDUCATION

Designing and running programs, skill sharing events, panel discussions and workshops. Working with higher education institutions to create new learning opportunities

FOSTERING COLLABORATION

Working with established creative sector organizations and local businesses to grow together, creating networks for creative partnerships

GROWING CREATIVE ECONOMY

Establishing a database of creative industry contacts, resources and jobs within the state of Vermont, creative workforce development and retention

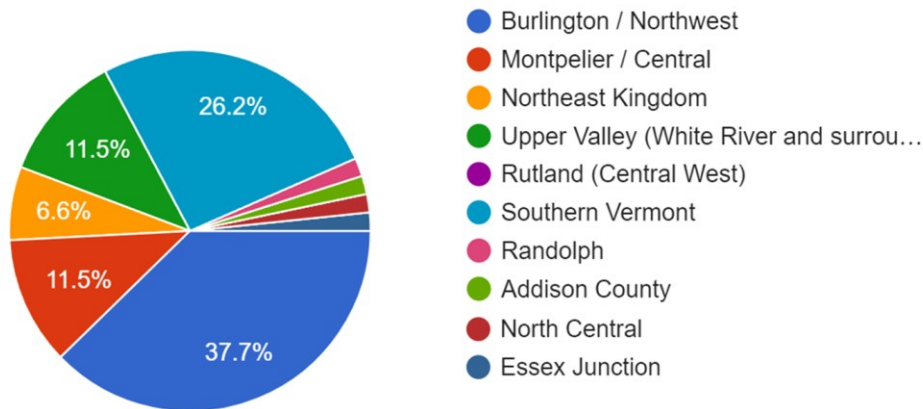
Our Current Landscape



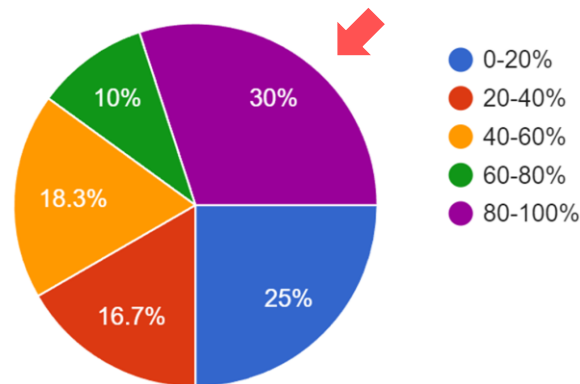
The Vermont Community

- VPC recently conducted a survey of our filmmaking and creative industry community.
- 78% of respondents said they work within the *film production/visual media* landscape

Location - Which location is closest to where you work/call home?



What percentage of your creative work occurs, or is based, out of state?



- There is a robust community of film/creative sector professionals in ALL of our communities, state-wide
 - A good portion of work from Vermont creatives is being found out of the state



The Vermont Community - Opportunities and Needs

**“...innovation and a creative culture are vital elements of the Vermont brand”
H.C.R. 28 (Act R-44)**

So, what can we do/what are the needs?

- **A central film and creative media office and database** that will help to supply the knowledge and support of how to successfully manage film productions and creative sector projects in the state
- **Tools that facilitate connections** to other creators in the state in order to work together, to local businesses in need of creative work and a job listing site to find/share opportunities
- **Mechanisms for attracting/making it easier** for larger productions to work here AND to find professionals in the state to hire

The people polled through this survey (VPC’s network) are all professionals working in the field and based in the state. They have made it consistently clear to us that a centralized resource, through which they can make connections and find more work, is a key first step to advancing the film industry in the state.



Out of State Production...

Challenges

NO real Film Office/Contact Point, Database OR State Film incentives (this is a *big deal* to studios, location managers, producers)

Basic infrastructure

NO real Security company (having to bring in MA company was a large undertaking and expensive).

NO real Police to communicate with. Street closures are a big consideration with films and production has a need for police presence.

NO internet service or cell service

Lodging limitations

Benefits / Positive Aspects

Enthusiasm - Everyone was there to greet me with a "yes, how can we help" approach rather than a "maybe, how much"? This was huge and so appreciated

Cost friendly- Filming costs for parking, vendors, holding, locations- about 1/2 of what you would pay in Boston MA

Vendors

Note: They were all communicative, professional and ALL on par with what we use in MA

A major studio with all the resources they could need had issues just getting basic things done. Imagine smaller production with much smaller budgets trying to get things done.



Local Impact - ECGS Letter of Support

When Beetlejuice 2 came to town, the East Corinth General Store became its central hub. Not only did they share information, asked for our help and were very clear they wanted to integrate the community crew was. We ended up being on a first name basis with most everyone and even had them be

The financial benefits from the production were significant:

- Our daily sales increased on average \$1500 a day for the months leading up to
- We experienced 3-4k in increased daily revenue during the 3 days of shooting.
- Due to the increase in traffic to the store, we were able to offer more hours to our
- I was asked to compile a list of extras from the community to be in the filming. It was that the estimated 50 plus extras were paid for their time.
- Building materials and cement blocks were donated to us from Charlestown Production

The Flood of July 10th best illustrates the support we felt from the Beetlejuice team. As the flood joined in with the rest of our community. We didn't need to ask them. They showed up and offered at bay, saving the store. These people were not strangers who kept to themselves. They were from our community.

Production Crews, like Beetlejuice 2, provide communities with local jobs, increased revenue, and working during slow seasons. They also bring tourism, The original Beetlejuice (1988) still brings Corinth that Beetlejuice 2 will bring. I would happily work with a movie production again and believe everyone.

Renee Salomaa , East Corinth General Store

-Daily sales increased on average \$1500 A DAY for the months leading up to production and a month after

-3 days of filming (with increased foot traffic /tourism boost) **there was a \$3-4k boost in daily revenue**

- The crew became **part of the community**, lending a hand, being friendly and **the benefits are evident**

The Database



Database - What is it?

Crew / Support Database

- Find specialized crew roles
- Verified Listings
- Vendors:
Catering,
Accommodations,
Security

Locations Database

- Find locations for film shoots
- Searchable Nationally
- Ease of Planning

Job Database

- Staff jobs from local employers
- Centralized, Industry-specific Internship opportunities.
- Pipeline of talent

Connect Professionals. Connect Businesses. Connect Jobs.



Database - Who will use it

**VT Production
Companies &
Freelancers**

**Students &
Job Seekers**

**Out of State
Productions**

Local Businesses



Database - example : crew + services

SEARCH FILTERS

CATEGORIES

Location

CITY

COUNTY

REGION

AFFILIATIONS

- WOMEN-OWNED BUSINESS
- MINORITY-OWNED BUSINESS
- GREEN COMPANY
- UNIFIED CERTIFICATION PROGRAM (UCP)

KEYWORD

[Search Tips](#)

Search

DIRECTORY > CREW

CREW LISTING

Please note: Our state is a right to work state. Crew members are not r

Display Option

Sort By [Name](#) | [Last Updated](#)

NAME CITY/TOV

ACTING - Choreographer

[Anjence, Fiona](#) [Ackerly, T.](#)

ART DEPARTMENT - Art Department Coordinato

[Brightwater, Riley](#) [Valley We](#)

ART DEPARTMENT - Storyboard Artist

[Anjence, Fiona](#) [Ackerly, T.](#)

COSTUME / WARDROBE - Costume Designer

[Faulkner, Ben](#) [Acala, TX](#)

MUSIC - Writer

[Brightwater, Riley](#) [Valley We](#)

SET DECORATION - Leadman

[Brightwater, Riley](#) [Valley We](#)

- Green Company
- Minority-Owned Business
- Unified Certification Program (UCP)
- Women-Owned Business

SEARCH FILTERS

CATEGORIES

Location

CITY

COUNTY

REGION

- Women's Business Enterprise National Council (WBENC)
- National Gay & Lesbian Chamber of Commerce (NGLCC)

KEYWORD

[Search Tips](#)

Search

DIRECTORY > CREW

CREW LISTING

Please note: Our state is a right to work state. Crew members are not r

Display Option

Sort By [Name](#) | [Last Updated](#)

ACCOUNTING - Assistant



[REID, OCTAVIUS TED](#)

West Central, PA
2015: The Shaggy Dog
2010: Home Run
2008: Curious George



[WILLIAMS, QUADIR](#)

North Central, PA
2019: First Daughter
2013: The Great Gatsby
2010: Home Run



[ROTHWELL PRODUCT...](#)

North Central, PA
2017: Sorry Monologue
2013: The Last Stand
2009: 2009: Date Movie



[OLIVERA, ELIZABETH](#)

North Central, PA
2016: I need a job
2014: Iron Man 3
2013: The Great Gatsby



[FIONA ANJENCE](#)

Fiona Anjence
Benstone Productions, LLC
123 Maple Street
Apt 12
Ackerly, TX 91523
[View File / Resume \(PDF\)](#)

CONTACT INFORMATION

Contact this person/company ONLY if you are interested in hiring them for their services. Do not contact them to solicit your services or products or to inquire about job openings.

- Yes, I understand. Proceed to contact.

DIRECTORY > CREW > ANJENCE, FIONA

CREW LISTING

Categories

[ACTING - Choreographer](#)
[ART DEPARTMENT - Storyboard Artist](#)

Weblinks

[Website](#)
[YouTube Channel](#)
[Vimeo Channel](#)

Description

Works well with animals.

Special Skills & Experience

Created Digital Elevation Models, using acquired LIDAR points

Draped 2D digital photographs over a computer generated 3D surface
Compiled Meta Data for client based on contract specifications
Managed multiple projects on short lead times while leading a team of imagery Analysts
Digital camera operator for aerial photography acquisition
Photoshop & AutoCAD editing
Handled multiple product changes to accommodate changing customer specifications

Credits

ACTING - Choreographer
2021: The Haunting

ART DEPARTMENT - Storyboard Artist
2023: The Marksman
2021: If Only (Paramount)
2012: Haunted River
2011: Once and Future King

Affiliations

Location Managers Guild International (LMGI)
No Affiliations

Color Code Key

- Texas Film Commission's Expatriate
- Green Company
- Minority-Owned Business
- Unified Certification Program (UCP)
- Women-Owned Business



Database - example : locations

492 locations

Sort By Last Modified | Display 24 | [Grid Icon] [List Icon] [Search Icon]

Location Categories

Enter or select categories

Location Name / ID

Location Name

Location ID

Geographic Area

Select Region

Select County

Select City/Town

Zip Code

Proximity

Any Distance

City/Town, State, Zip Code

Architecture Style

Enter or select styles

Keywords

Enter Keyword

Search

Reset



Woodville, NH 03785



Delta Dental Stadium



Maison O (The Round House)



Newbury NH



1802 Saddle Hill Farm



Waipole Tranquility Farm



DoubleTree Nashua



Bedford Public Library



Belmont Public Library



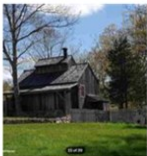
Berlin Public Library



Bethlehem Public Library



GEP Dodge Library



Large Antique Farmhouse Property



Barrington Public Library



Bartlett Public Library



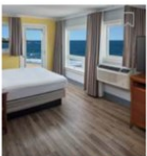
Bath Public Library



Griffin Free Public Library



Kimball Library



Ashworth by the Sea



James A. Tuttle Library



Thayer Public Library



Hampton Inn Littleton



Holiday Inn Salem



Holiday Inn Manchester Airport

Simple, intuitive and easy to navigate

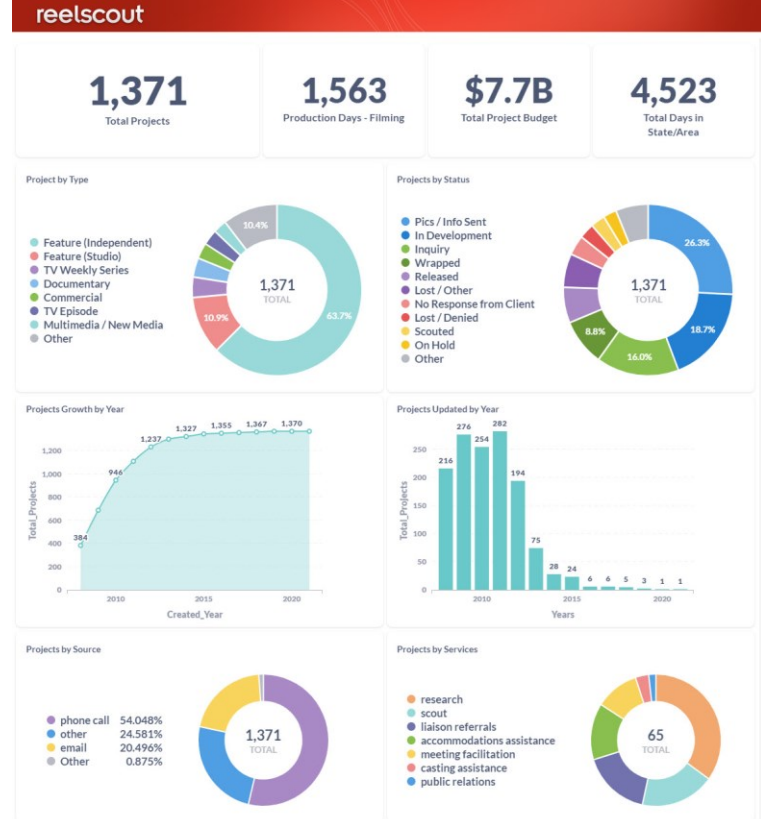
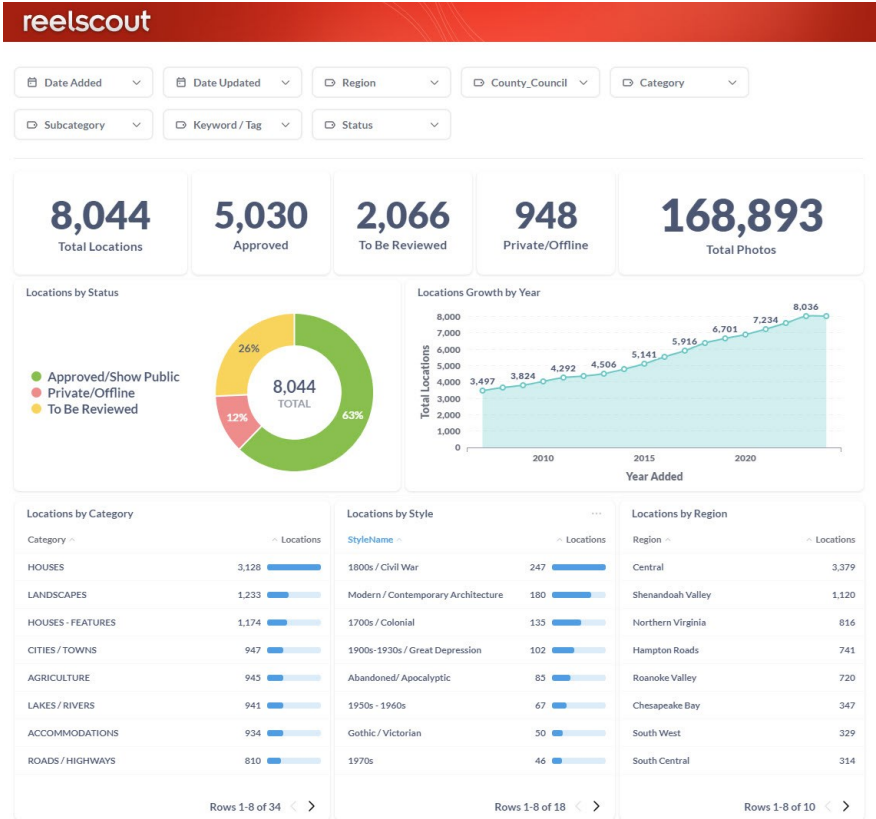
Clear info, photos available

Search by location, category and proximity to areas

*Included in nationwide data search



Database - example dashboards





Foundation of Future Work

A self sustaining film and media ecosystem in Vermont

Partnerships -Expanding capabilities to other creative sectors (i.e. music)

Education -Connecting points for collaboration and unmet needs

Workforce Development -Jobs are easier to discover, hire for and share via a job board/database

Economic development - VT attracts more productions from out of state that help grow the industry and state economy

DATABASE