

# VERMONT AGENCY OF TRANSPORTATION DISTRICT MAINTENANCE AND FLEET DIVISION

## OVERVIEW

---

WAYNE B. GAMMELL, DIRECTOR

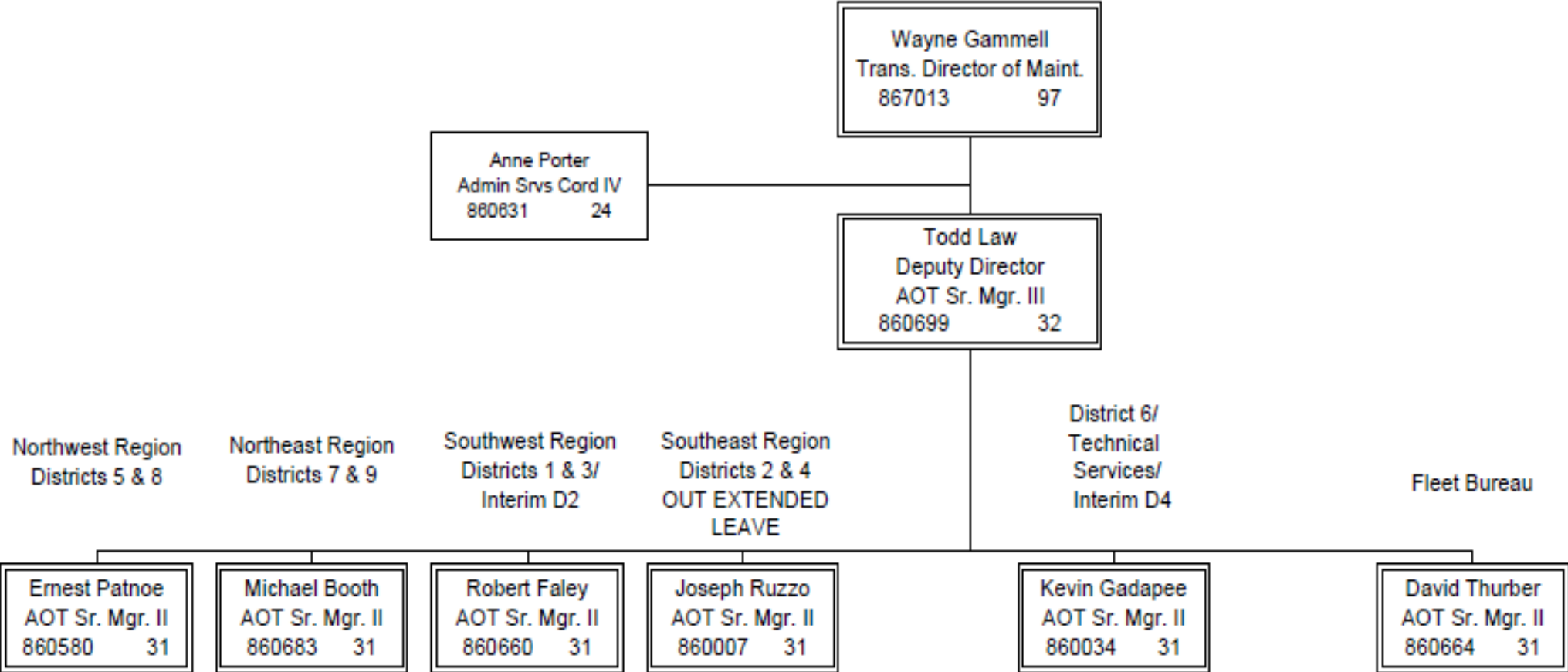
TODD C. LAW, DEPUTY DIRECTOR

DAVID THURBER, FLEET MANAGER

2023 LEGISLATIVE SESSION

# Agency of Transportation

## District Maintenance & Fleet Division Maintenance Bureau

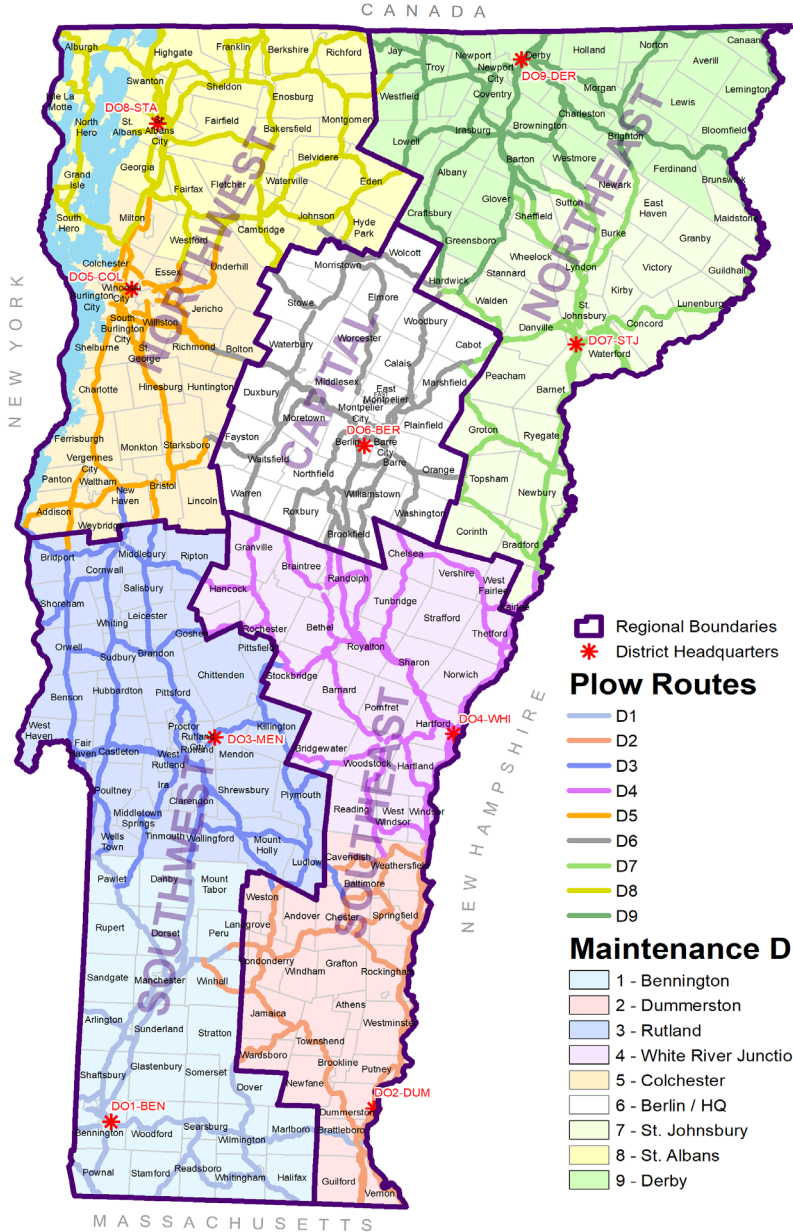


# DISTRICT MAINTENANCE AND FLEET DIVISION

The **Agency of Transportation (VTrans)** has significant public investment in its transportation infrastructure. **District Maintenance and Fleet Division** – with over 550 employees – maintains the infrastructure and the vehicles and equipment necessary to perform the repairs and maintenance for the benefit of the traveling public. Our workforce is dedicated, hardworking and proud of what they do.

- **Maintenance Districts-** 9 Districts perform the activities that preserve the highway assets and provide for the safe and efficient movement of the customers who utilize our roadways. Some of the major activities performed by the maintenance district staff are winter maintenance, pothole patching, leveling paving, tree cutting, technical assistance to the municipalities, roadside mowing and bridge maintenance.
- **Fleet Maintenance-** VTrans Fleet purchases, maintains and administers the Agency's fleet of vehicles and equipment, using an internal service fund. Vehicles and equipment are rented to maintenance districts, Department of Motor Vehicles and other VTrans divisions.
- **Technical Services-** Is comprised of sections that perform maintenance of specialty assets such as storm water detention basins and permits, highway bridges, hazardous materials and spills, temporary bridges for state and municipal use and emergency management for state and federal disasters.

# DISTRICT MAINTENANCE AND FLEET LEADERSHIP TEAM



- Regional Boundaries
- \* District Headquarters

### Plow Routes

- D1
- D2
- D3
- D4
- D5
- D6
- D7
- D8
- D9

### Maintenance Districts

- 1 - Bennington
- 2 - Dummerston
- 3 - Rutland
- 4 - White River Junction
- 5 - Colchester
- 6 - Berlin / HQ
- 7 - St. Johnsbury
- 8 - St. Albans
- 9 - Derby

Wayne Gammell  
 Director  
 Tel: [\(802\)461-7291](tel:(802)461-7291)  
 Email: [wayne.gammell@vermont.gov](mailto:wayne.gammell@vermont.gov)

Todd Law  
 Deputy Director  
 Tel: [\(802\)839-0274](tel:(802)839-0274)  
 Email: [todd.law@vermont.gov](mailto:todd.law@vermont.gov)

Northwest Region  
 Ernie Patnoe  
 District Transportation Administrator  
 Phone: [\(802\) 461-7840](tel:(802)461-7840)  
 Email: [Ernie.Patnoe@vermont.gov](mailto:Ernie.Patnoe@vermont.gov)

Northeast Region  
 Michael Booth  
 District Transportation Administrator  
 Phone: [\(802\) 498-8419](tel:(802)498-8419)  
 E-mail: [michael.booth@vermont.gov](mailto:michael.booth@vermont.gov)

Fleet Management  
 David Thurber,  
 Fleet Superintendent  
 Phone: [\(802\) 793-0282](tel:(802)793-0282)  
 Email: [David.Thurber@vermont.gov](mailto:David.Thurber@vermont.gov)

Capital Region, Interim District 4  
 Kevin Gadapee,  
 District Transportation Administrator  
 Phone: [\(802\) 461-8764](tel:(802)461-8764)  
 Email: [Kevin.Gadapee@vermont.gov](mailto:Kevin.Gadapee@vermont.gov)

Southwest Region, Interim District 2  
 Robert Faley  
 District Transportation Administrator  
 Phone: [\(802\) 447-2790](tel:(802)447-2790)  
 E-mail: [Robert.Faley@vermont.gov](mailto:Robert.Faley@vermont.gov)

Southeast Region  
 Joe Ruzzo- long term leave  
 District Transportation Administrator

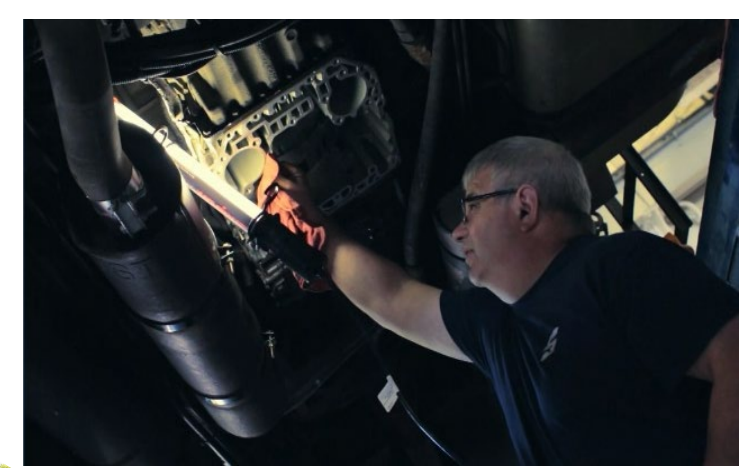
# DISTRICT MAINTENANCE CONTINUED

**Technical Services-Bridge** Maintenance, Pollution Prevention and Compliance, Geographic Information Systems(GIS), Emergency Recovery Programs and Special Projects are all captured in the Technical Services section and provides a great deal of support to the District Maintenance staff to meet the maintenance needs.

- o **Bridge Maintenance**- Provides technical assistance and design of highway structures including bridges and large culverts. Also provide guidance and assistance to municipalities on the municipal owned structures. Oversee the AOT temporary bridge inventory for state and municipal needed temporary bridges.
- o **Pollution Prevention & Compliance** - Provides administration over environmental regulatory compliance and natural resource protection for the Agency. The Section ensures compliance under various federal and state environmental regulatory programs including stormwater, hazardous materials, hazardous waste, and vegetation management.
- o **GIS**- Provides asset inventories and disaster tracking by use of geo-spatial means to provide insight into the conditions of our highway assets and to provide timely information to the Agency and Statewide leadership during emergency situations where damages occur on Vermont transportation systems.
- o **Performance Management Programs** – Provides best management practices and performance measures to ensure that completion of cyclical and preventative maintenance needs are tracked for many highway assets.

# WHAT DO WE DO?

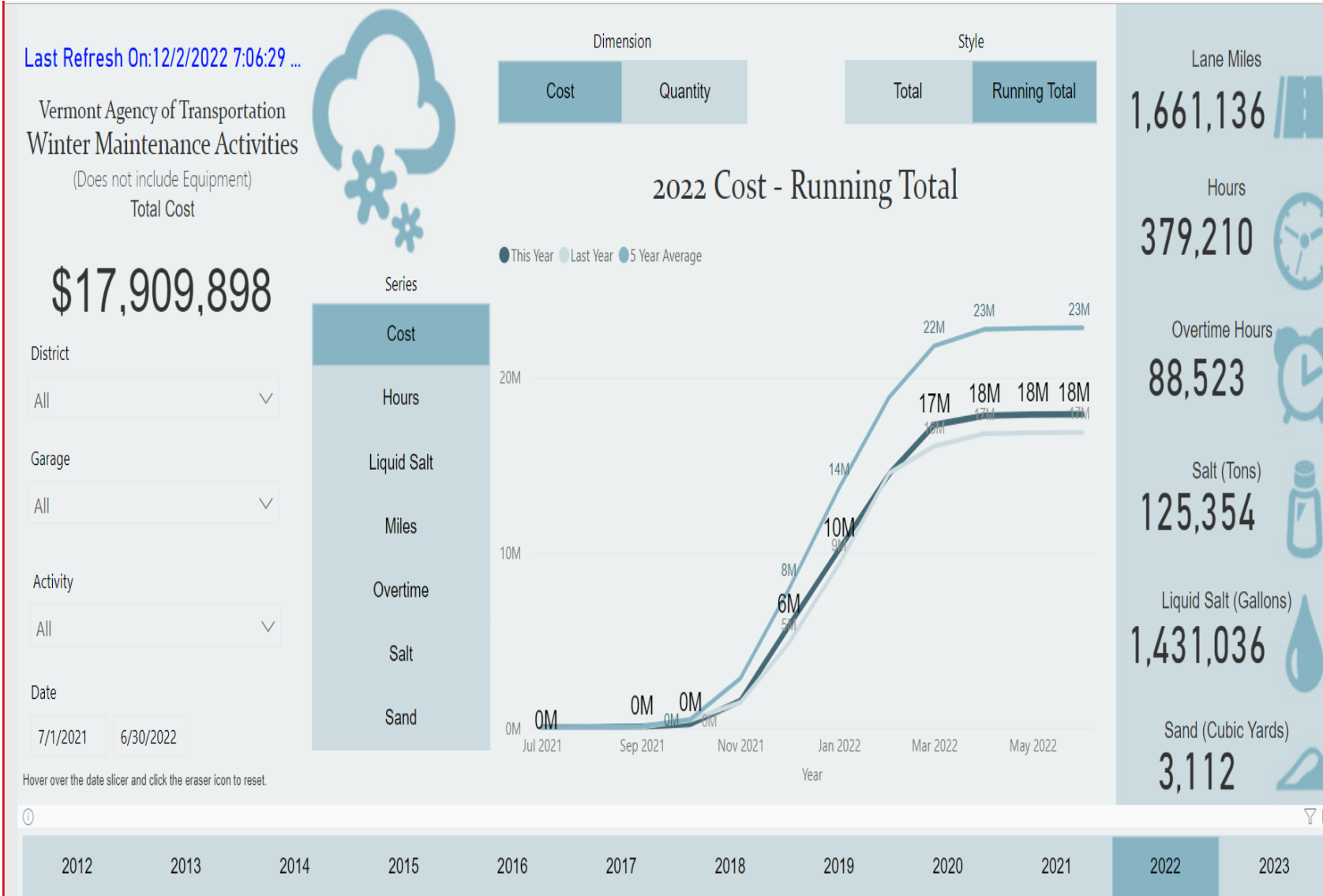
- Winter Maintenance
- Emergency Response/ Mitigation
- Picking Litter
- Sweeping
- Mowing
- Pothole Patching
- Ditching
- Sign Installation And Repairs
- Bridge Washing, Repairs, Rehab Projects and Temporary Bridges
- Guardrail Repairs
- Tree And Brush Cutting
- Culvert Maintenance, Repair And Rehabilitation
- Technical Assistance To Towns
- Fleet Management And Maintenance
- Stormwater Compliance
- Hazardous Materials Management & Cleanup
- Subsurface Exploration (Drill Crew)



# Program Highlights: Maintenance

## Maintenance by the Numbers

- 452 Employees
- 374 Licensed CDL Drivers
- 64 Garages
- Total acres of mowing: 17,812
- Total lane miles plowed: 1,661,136
- Total linear feet of guardrails repair: 21,699
- Total tons of litter picked up: 436
- Total miles of ditching: 23.49
- Total bridges washed: 332
- Total linear feet of culvert installed: 4,777
- *Salt Price Averages:*
- FY21 - \$53.07
- FY22 - \$60.74
- FY23 - \$84.50



<b>FY 22 Salt Tons:</b>	<b>125,354</b>
<b>FY 21 Salt Tons:</b>	<b>105,343</b>
<b>FY 20 Salt Tons:</b>	<b>140,463</b>
<b>5 Year Average Salt Tons:</b>	<b>152,378</b>

# Bridge Maintenance Program

The Bridge Maintenance Program strives to preserve, maintain, and operate a bridge maintenance program in conjunction with the Highway Divisions Structures & Asset Management Program. Our transportation system in the most cost effective and efficient manner. To have and maintain a successful bridge maintenance program seeking a balanced approach to preservation and rehabilitation/replacement.

11 Bridge Inspection Findings were issued in 2019

11 Bridge Inspection Findings were issued in 2020

10 Bridge Inspection Findings were issued in 2021

13 Bridge Inspection Findings were issued in 2022

The Bridge Maintenance Unit designs, advertises projects and provides construction oversight for projects generated from the Bridge Inspection Findings, District Findings or other assigned projects.

Year	Number of Projects	Cost
2019	20	\$3,840,146
2020	22	\$5,615,985
2021	37	\$8,617,688
2022	36	\$6,746,997



# Bridge Maintenance

## Williston BM23502

**Description of Work:** Urgent culvert replacement.  
**Contractor:** Dirt Tech  
**Contact Amount:** \$197,555.00



Before



After

## Newport BM19902

**Description of Work:** Lining of the existing culvert with an encased headwall at the inlet, backwatering weirs at the outlet and associated channel work.  
**Contractor:** J.P. Sicard, Inc.  
**Contact Amount:** \$315,235.00



Before



After

## Barton BM22902

**Description of Work:** Removal of existing bridge pavement, concrete repair to the deck, installing membrane and re-paving of the deck with associated approach work.  
**Contractor:** Winterset, Inc.  
**Contact Amount:** \$262,000.00



Before



After

## Temporary Bridge

Currently there are 13 temporary bridges in service totaling 1180 lineal feet. Many of those have been in service for five or more years and will require repair or replacement of parts. These bridges are critical to the traveling public as they are used to replace failing bridges or bridges that are damaged through storms or other natural disasters.



# Pollution Prevention & Compliance Section

## Water Quality Unit & Hazmat Units

The Water Quality Unit works as stewards of surface water quality across all Agency Divisions.

- ◆ Managing Agency compliance under various State stormwater permitting programs
  - ◆ State Operational Stormwater Permit
  - ◆ Transportation Separate Storm Sewer System (TS4) Permit
  - ◆ Multisector General Permit (MSGP)
- ◆ Implementing Public Education and Outreach Programs
- ◆ Stormwater Asset Mapping, Inventory, and Management
- ◆ Stormwater Pollution Prevention and Source Control
- ◆ Construction, Inspection and Maintenance of Best Management Practices implemented to achieve surface water quality standards established under Total Maximum Daily Load (TMDL) requirements (i.e., Phosphorus reduction in Lake Champlain)

The HazMat Unit works to support Agency project delivery and maintenance activities in achieving compliance with multiple State and Federal regulations and permitting programs.

- ◆ Emerging contaminants of concern
- ◆ Hazardous materials and waste
- ◆ Fuel tanks
- ◆ Hazardous sites
- ◆ Water supplies
- ◆ Pollution prevention and source control



# Central Garage



Central garage is the fleet management section for the Agency of Transportation. Central Garage is AOT's advocate, caretaker and technical resource for mid-size and heavy-duty highway and bridge maintenance fleet assets, including multi-use plow and dump trucks and specialized heavy and construction equipment. Among these assets include 275 dump trucks, 96 pickups with plows, 55 loaders, and 5 graders. Central Garage also supports other Agency Divisions including Highway, DMV Commercial Vehicle Enforcement Section, Aviation and Rail, and Bridge Inspection equipment through intra-agency service agreements.

Fund Source	FY 2022 AS PASSED	FY 2023 AS PASSED	Increase (Decrease)	Percent Change
CENTRAL GARAGE FUND	22,202,720	22,754,095	551,375	2.5%

	FY2023 Equipment Budget
Transfer from TF	\$1,434,903
Depreciation	\$6,413,172
Surplus sales	\$668,979
Formula total	\$8,517,054
Less Rescission	0
<b>FY2023 Equipment Budget</b>	<b>\$8,517,054</b>
<b>FY2022 Equipment Budget</b>	<b>\$8,139,638</b>
<b>FY2022 to FY2023 Increase (Decrease)</b>	<b>\$377,416</b>

FY2023 As Passed Budget		
Personal Services	\$4,847,286	(Salaries: \$2,833,519)
Operating Costs	\$9,389,755	
Equipment Costs	\$8,517,054	
<b>Total FY2023 Budget</b>	<b>\$22,754,095</b>	

Equipment Purchase Value:	\$49,438,828
Capital Improvements (upfitting):	\$22,724,437
Total Replacement Cost:	\$72,163,264
Depreciated Value:	\$30,556,041

---

# Approximate Fleet/ Equipment Value

# Typical Tandem Axle Plow Truck Cost

---

Based on FY2022 Purchase:

Chassis Purchase Price:	\$113,583
Upfit Cost	\$ 82,244
Total Cost per Unit:	\$195,827



# AOT EV Fleet

- In 2005 the Agency added its first hybrid electric vehicle, a Honda Civic hybrid (HEV). The Agency's first plug-in hybrid (PHEV) a Chevy Volt, arrived in 2013. In 2017, AOT received the State's first fully electric (BEV) fleet vehicle and, more recently, introduced an electric motorcycle to the DMV Enforcement fleet.
- Today, the Agency's light-duty fleet, which consists primarily of trucks, sedans and utility vehicles includes 14 fully electric, 1 plug-in hybrid, and 25 hybrid electric vehicles with 6 fully electric trucks on order, 6 to be ordered when available and 12 hybrid electric vehicles on order. In addition, we have purchased 1 fully electric mini-excavator and intend to add another fully electric mini-excavator and a fully electric loader in the coming months.



Wayne Gammell, Director  
[Wayne.Gammell@vermont.gov](mailto:Wayne.Gammell@vermont.gov) or 802-461-7291

Todd Law, Deputy Director  
[Todd.Law@vermont.gov](mailto:Todd.Law@vermont.gov) or 802-839-0274