

Replacing Chittenden Regional Correctional Facility

Jennifer M. V. Fitch, P.E.
Commissioner, BGS

Nick Deml
Commissioner, DOC

March 21, 2024

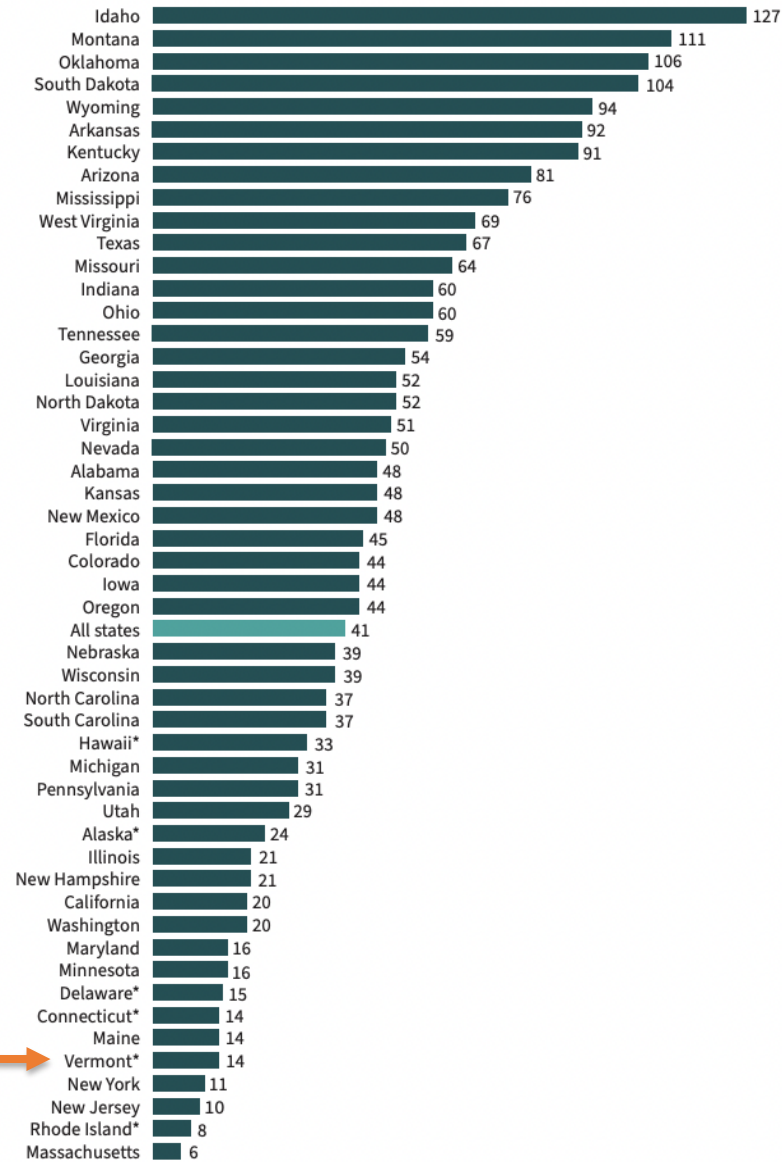


Female Incarceration Rates by State

Vermont female incarceration rate ranks among lowest nationally, one-third national rate

Source: [The Sentencing Project](#)

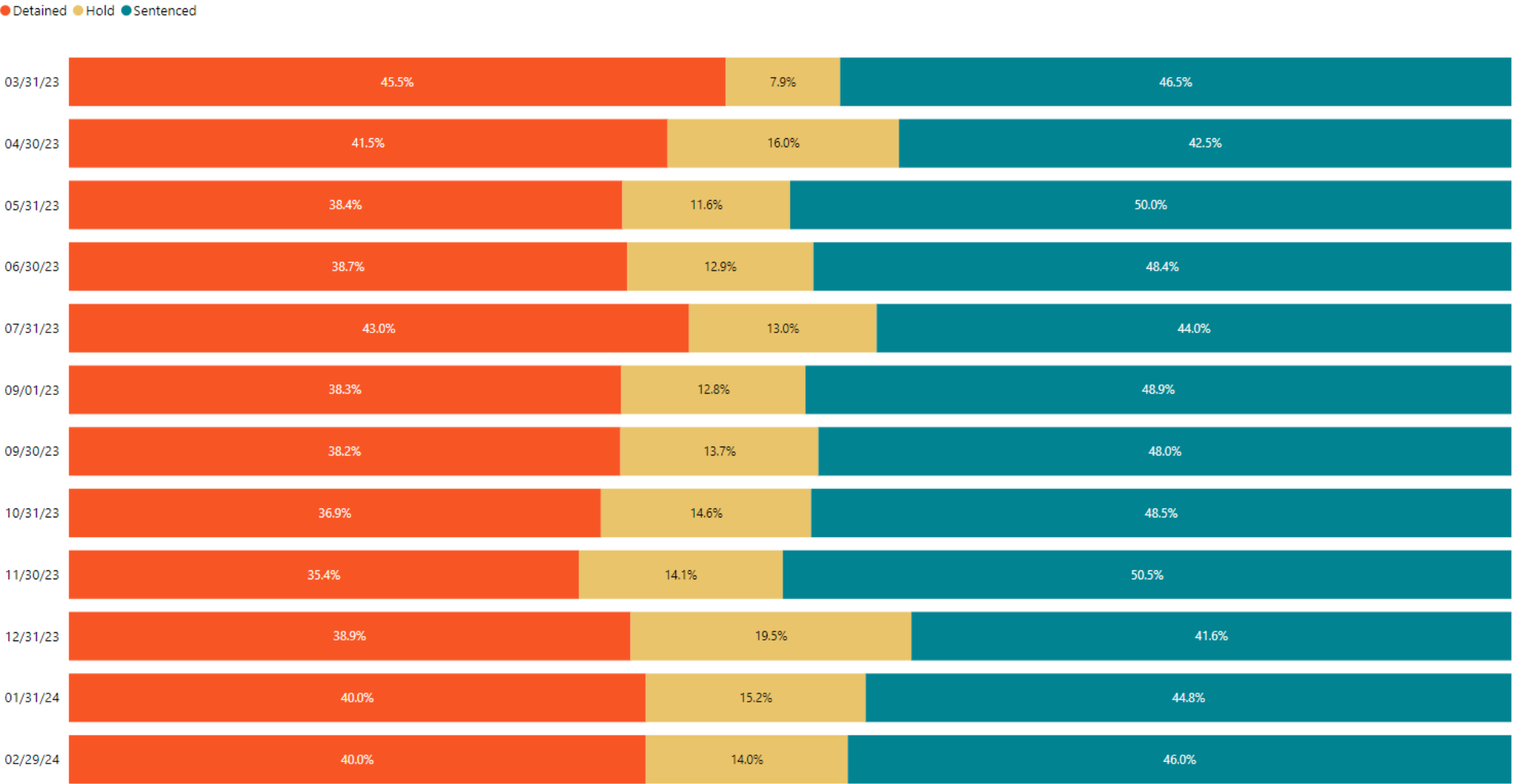
Highest and Lowest Female State Imprisonment Rates (per 100,000 U.S. Female Residents), 2021



*In these states with integrated jail and prison systems, data include both jail and prison populations.

Source: Carson, E.A. (2022). *Prisoners in 2021 - Statistical Tables*. Washington, DC: Bureau of Justice Statistics

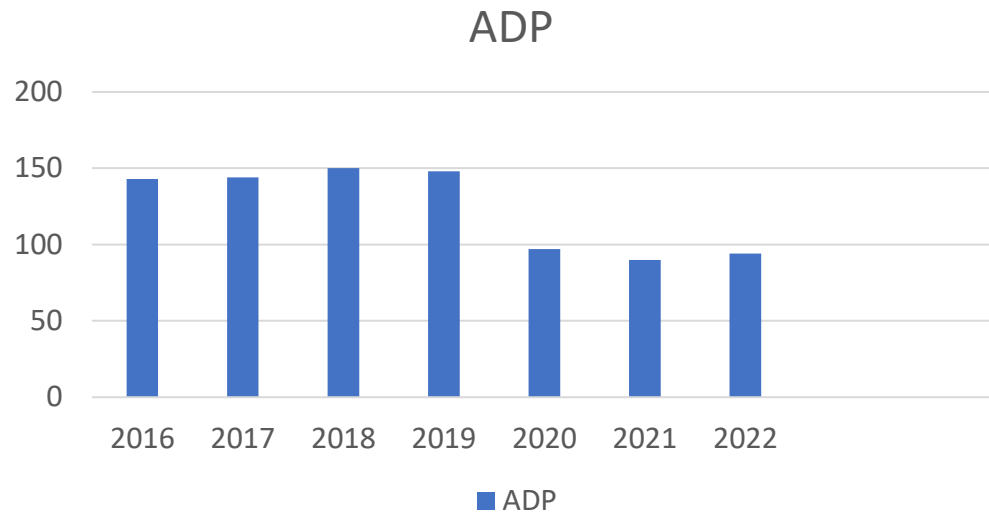
CRCF Population by Legal Status



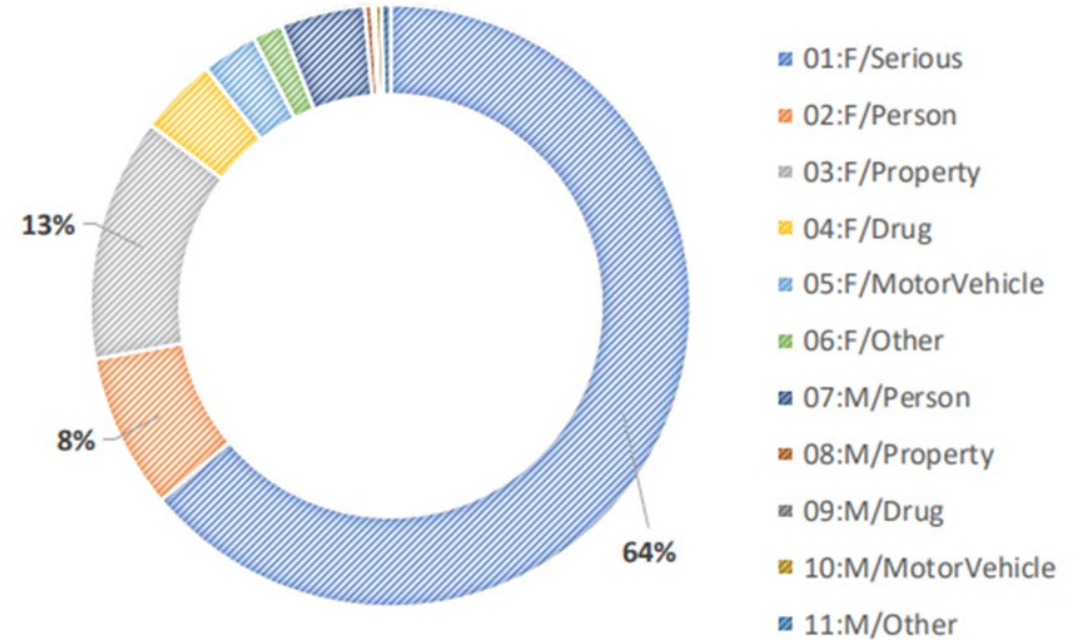
Note: "Hold" indicates federal or detainee for other jurisdiction

Average Daily Population (ADP) 2016-2022

- Low: 75 (May 2021)
- High: 157 (June 2018)



OFFENSE TYPE



64% of offenders are being held for a felony, serious offence according to point-in-time data from 8/12/22



**CHITTENDEN
REGIONAL
CORRECTIONAL
FACILITY**





CRCF Conditions

- 1 Poor quality of lighting, does not respond to occupants' circadian rhythm
- 2 Poor natural daylight with typical institutional bars on windows
- 3 Mildly therapeutic color scheme
- 4 Rooms are not fully ligature resistant
- 5 Hard institutional furnishings
- 6 Blind corners and inefficient use of space
- 7 Upper bunks are dangerous and difficult to get up to
- 8 Inability to maintain thermal comfort



Evidence-Based Design

Trauma-Informed Design Strategies

SENSORY BOUNDARIES

Create permeable membranes within spaces to modulate sensory information.

IDENTITY ANCHORS

Create touch-points for personalization.

NESTED LAYERS

Create options for interaction and withdrawal.



Evidence-Based Design

SENSORY BOUNDARIES

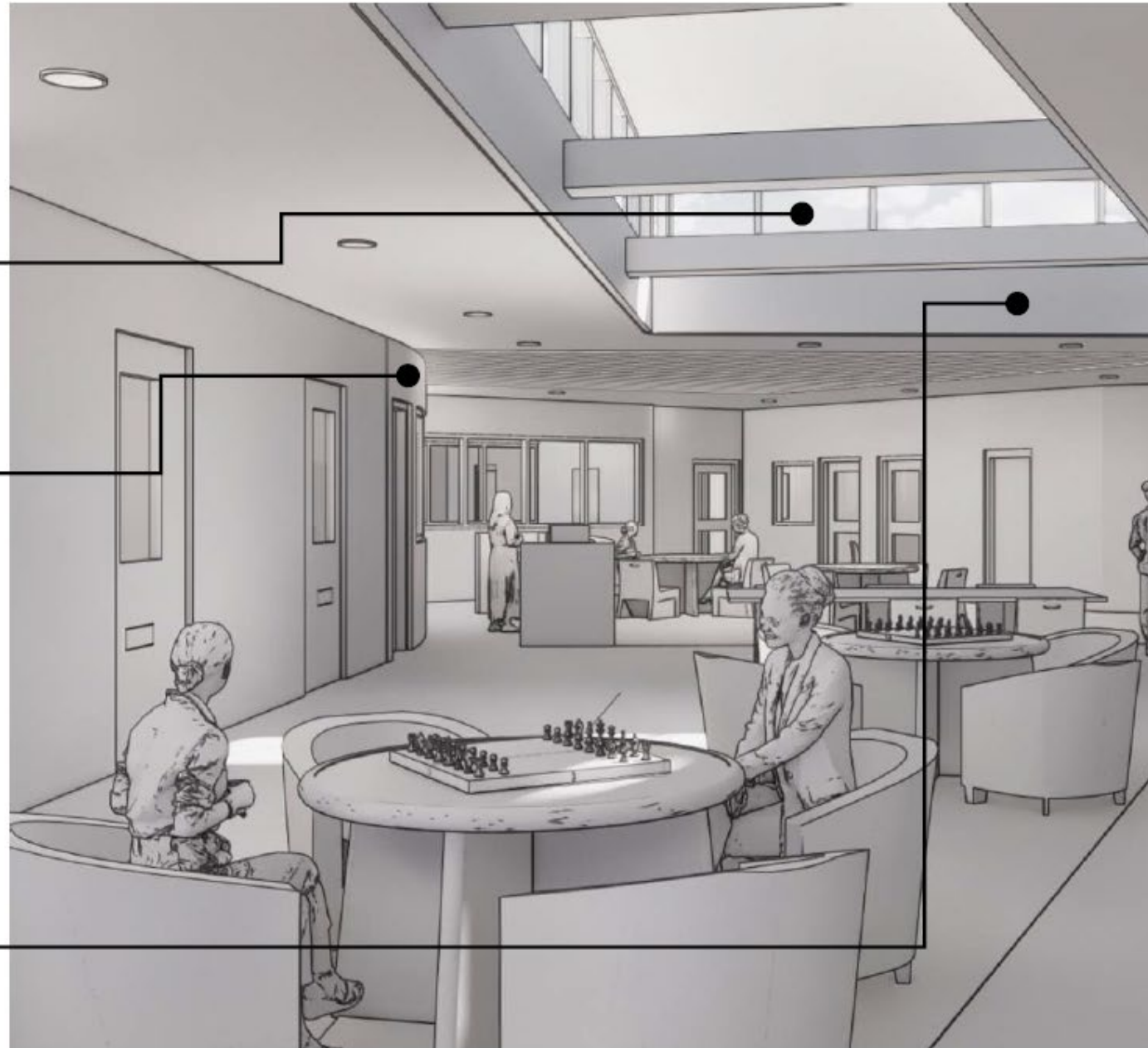
Natural light stimulates senses and reduces stress.

IDENTITY ANCHORS

Curved walls add visual interest and breaks up long spaces.

NESTED LAYERS

Varying ceiling heights provide spaces for collaborative interaction and lower, more intimate spaces



Evidence-Based Design

SENSORY BOUNDARIES

Differentiation in ceiling materials, like wood, will add warmth, resonate sound and texture and provide differentiation of space

IDENTITY ANCHORS

Mural of local landscape to create sense of place and connection to nature.

NESTED LAYERS

Varying types of non-institutional furniture to break up large space into smaller intimate spaces.



Evidence-Based Design



Evidence-Based Design



Evidence-Based Design



Evidence-Based Design



Evidence-Based Design



Southern Maine Women's Reentry Facility



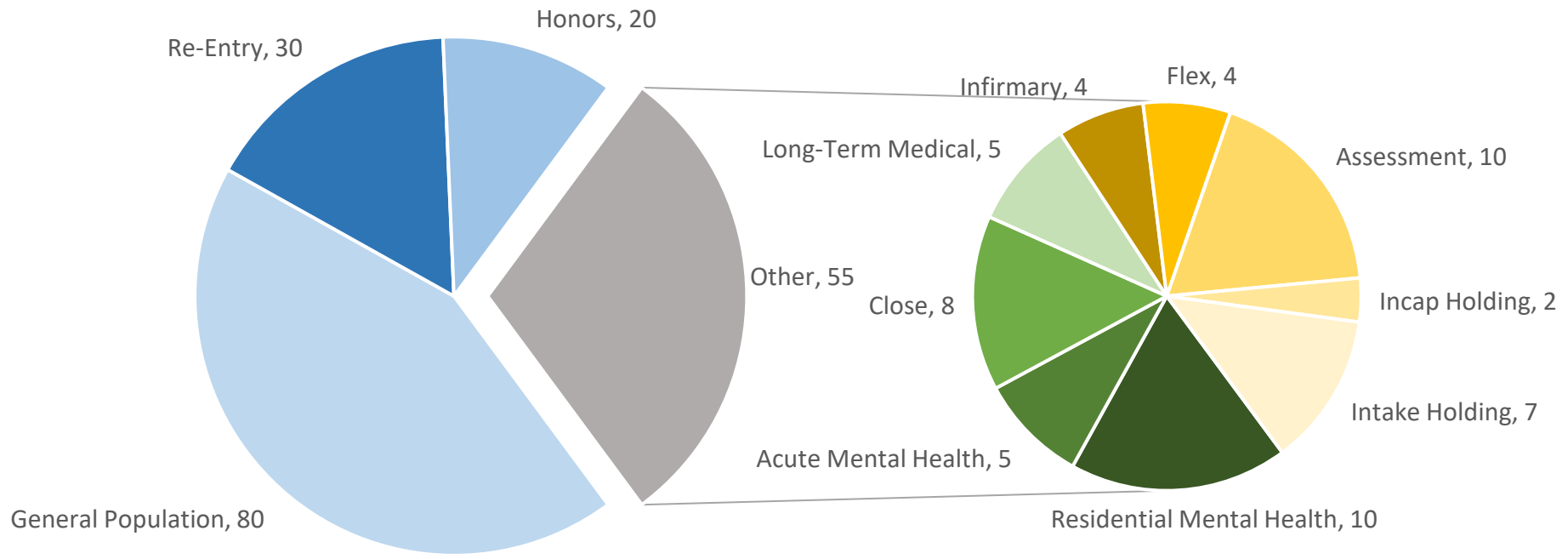
Southern Maine Women's Reentry Facility

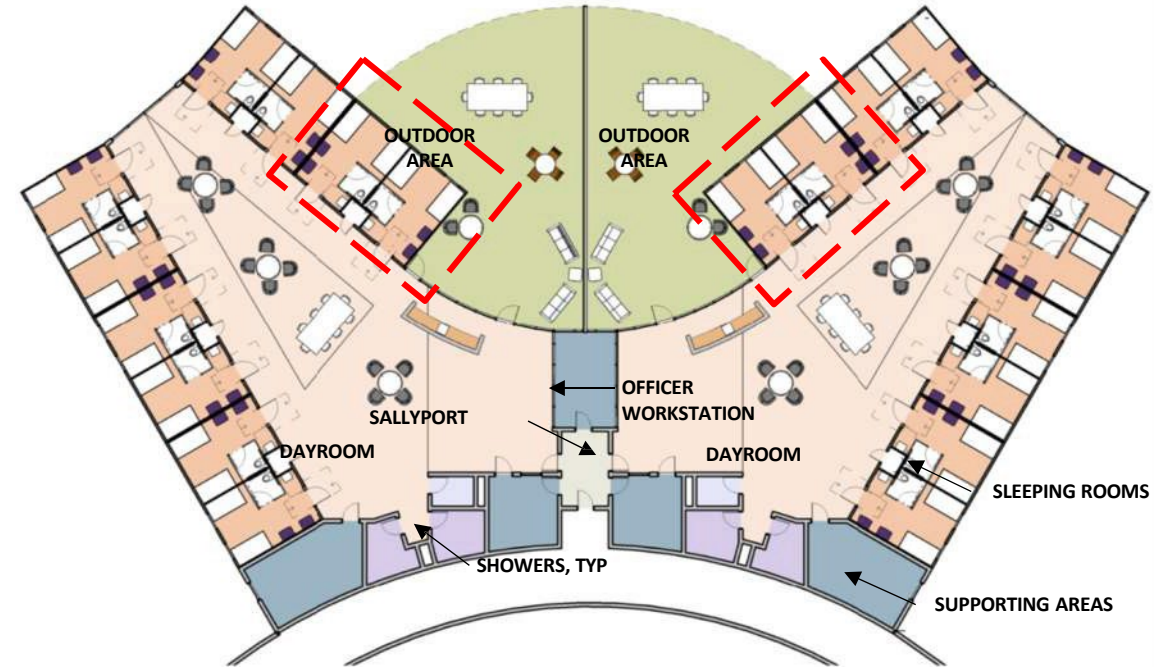
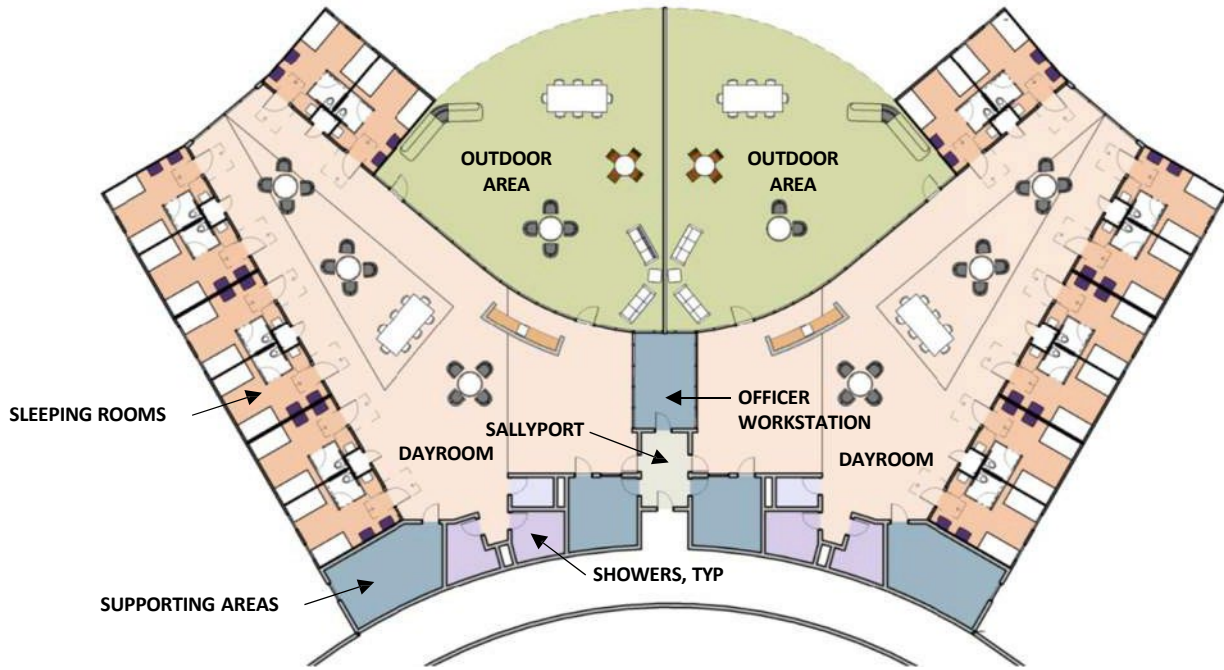


Housing Breakdown

- **Re-Entry: 30+**
- **General Population Residential Beds: 80**
- **Honors: 20**
- **Specialized Temporary Beds: 55**
 - Shorter stay: 27
 - *Infirmary: 4*
 - *Flex: 4*
 - *Assessment: 10*
 - *Incap Holding: 2*
 - *Intake Holding: 7*
 - Longer stay: 28
 - *Residential Mental Health: 10*
 - *Acute Mental Health: 5*
 - *Close: 8*
 - *Long-Term Medical: 5*

Housing Breakdown



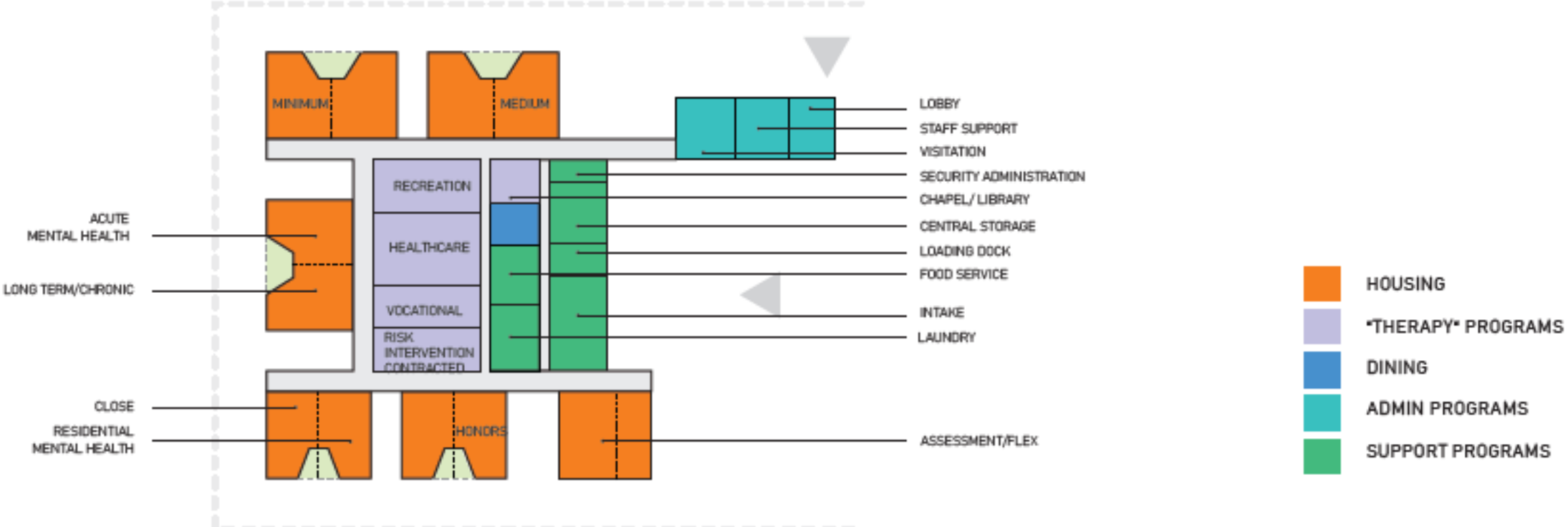


32 BED HOUSING UNIT	
SLEEPING ROOMS	2,457 SF
DAYROOM	5,241 SF
SUPPORT AREAS	1,325 SF
GROSS SQFT TOTAL	9,023 SF

+/- 7%
 GROSS SQUARE FOOTAGE
 INCREASE FOR 8 ADDITIONAL
 BEDS WITHIN A UNIT

40 BED HOUSING UNIT	
SLEEPING ROOMS	3,071 SF
DAYROOM	5,241 SF
SUPPORT AREAS	1,325 SF
GROSS SQFT TOTAL	9,637 SF

COMPARISON OF 32 vs. 40 BED HOUSING UNIT



Proposed HOK Designs



A

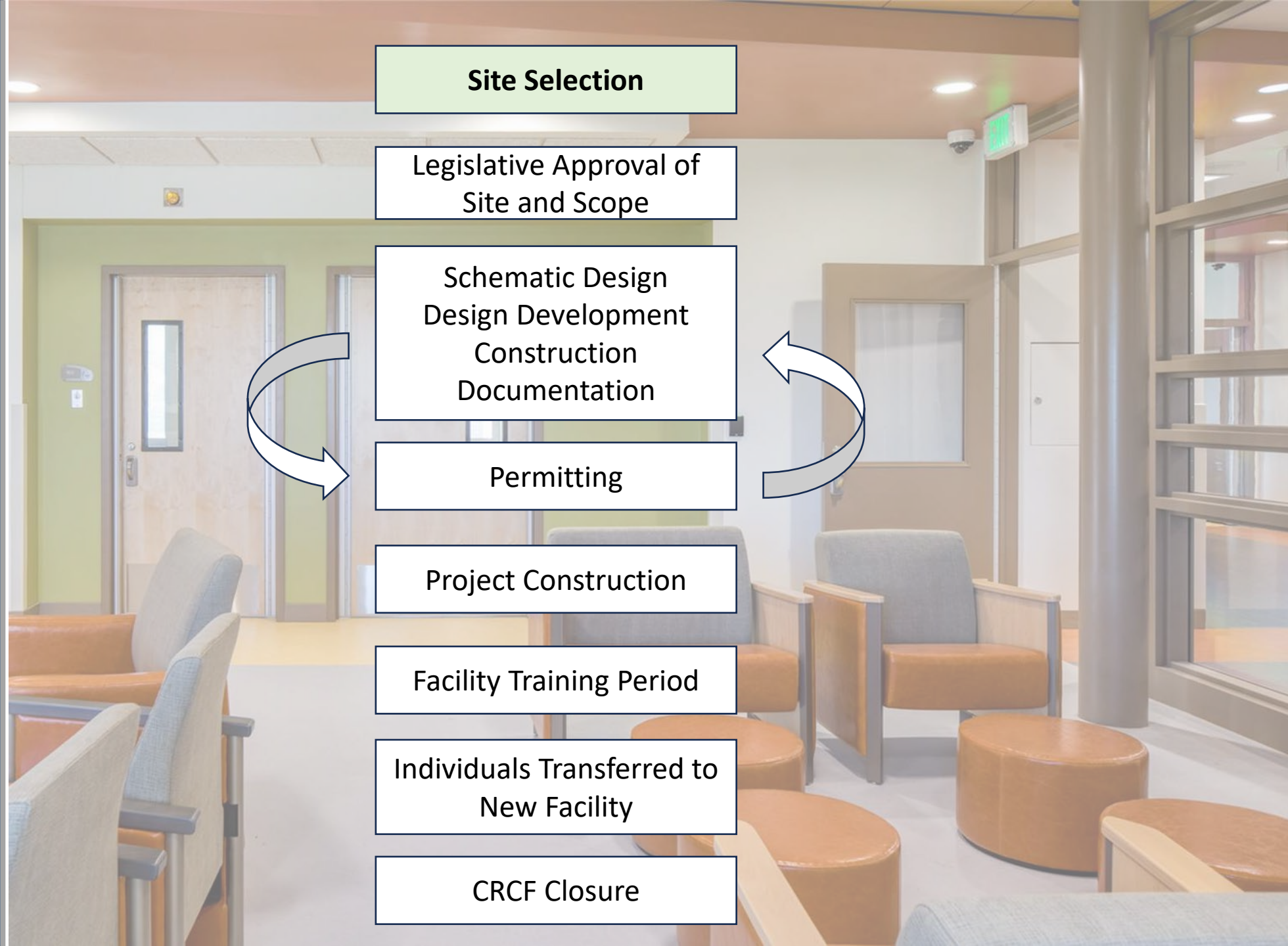


B



C

Next Steps



Site Selection

Legislative Approval of Site and Scope

Schematic Design
Design Development
Construction
Documentation

Permitting

Project Construction

Facility Training Period

Individuals Transferred to New Facility

CRCF Closure



Appendix

Southern Maine Women's Reentry Facility



Southern Maine Women's Reentry Facility



Vermont Male Residential Bed (GP) Capacity: 2023

