

FY25 Capital Bill Adjustment Section 3

Joe Aja

Director, Design & Construction

Department of Buildings and General Services

Al Cormier

Chief of Operations

Department of Corrections



Corrections ADA Compliance

Project Status: Work at the Southeast State Correctional Facility is almost complete. Work will soon begin at the Northern State Correctional Facility and the Chittenden Regional Correctional Facility.

Project Scope: Provide design and construction for ADA compliance:

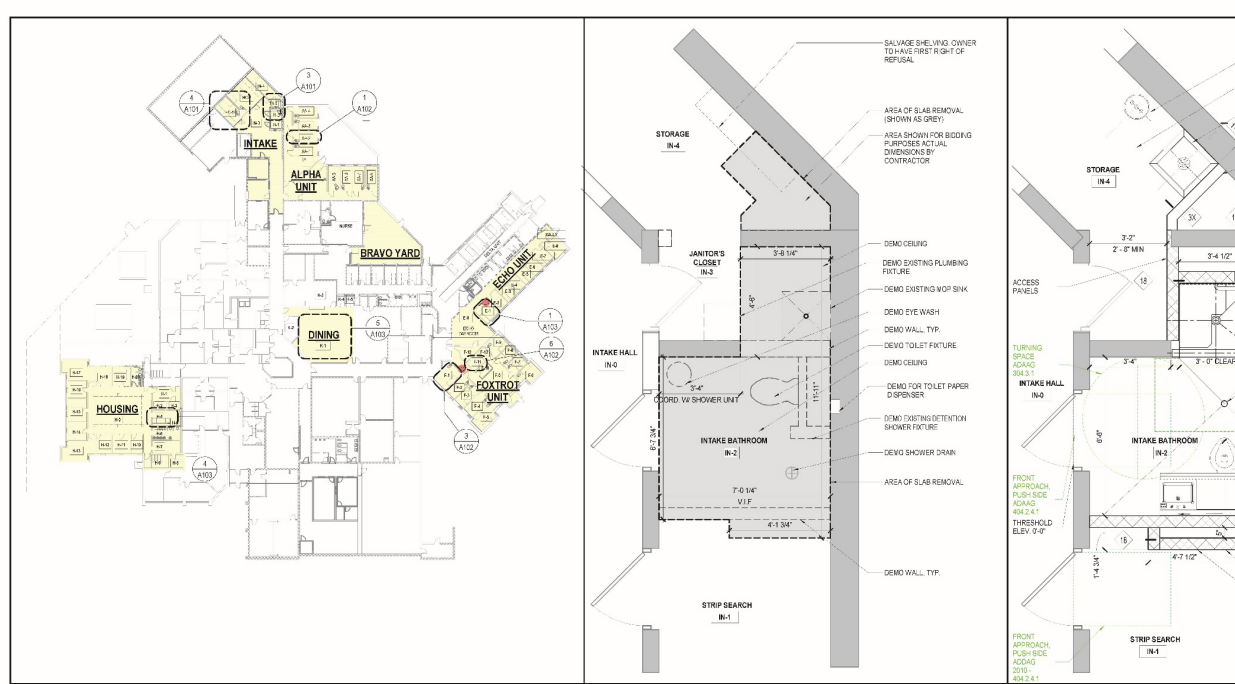
- Southern State Correctional Facility
- Northern State Correctional Facility
- Chittenden Regional Correctional Facility

FY23 Appropriation: \$1,200,000

Funding Encumbered: \$383,407

Funding Expended: \$459,780

FY25 Request: \$822,000



1 KEY PLAN
SCALE: 1" = 20'-0"

FLOOR PLAN LEGEND

ALSO SEE WALL TYPES SHEET A004

- EXISTING WALL/COLUMN TO REMAIN
- NEW METAL STUD/GYPSUM WALLBOARD WALL
- NEW MASONRY WALL
- NEW STEEL/CONCRETE COLUMN - SEE STRUCTURAL
- FIRE EXTINGUISHER CABINET:
 - FES-C1: 50MOUNTING BRACKET W/ FE-1
 - FES-2: SURFACE MOUNT CABINET W/ FE-1
- FIRE EXTINGUISHER ON WALL BRACKET:
 - FE-1: MOUNTING BRACKET DRY CHEK EXTINGUISHER (TYPE A-B-C)
 - FE-2: MOUNTING BRACKET GREASE EXTINGUISHER (TYPE K)
- GWB COLUMN ENCLOSURE
- METAL COLUMN ENCLOSURE
- PORCELAIN TILE COLUMN ENCLOSURE

Room name -
101 - ROOM TAG - SEE A000 FOR FINISHES
101 - ROOM NUMBER

WALL TAG - SEE SHEETS A003, A004
WALL TYPE
WHERE A WALL TYPE LEADER PASSES THROUGH 2 OR MORE WALLS, ALL OF THOSE WALLS SHALL BE OF THE TYPE INDICATED

DOOR TAG - SEE SHEET A899
DOOR NUMBER

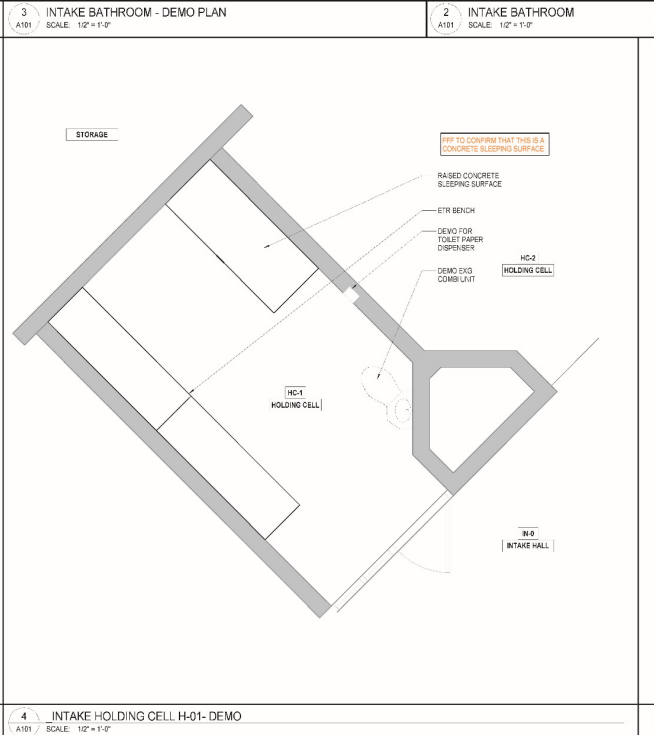
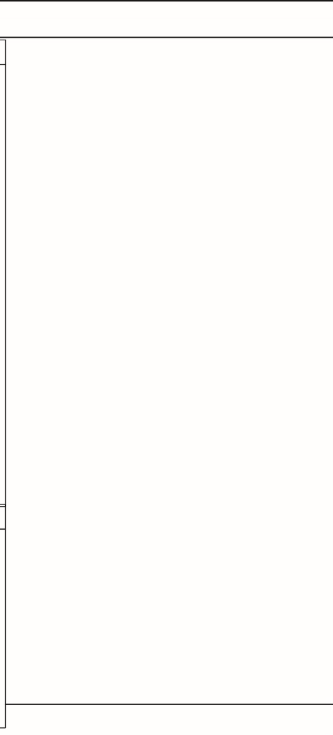
WINDOW TAG
SEE SHEET A110

CURTAIN WALL TYPE
SEE SHEET A120

FLOOR PLAN GENERAL NOTES

ALSO SEE SYMBOL LEGEND ON COVER SHEET

1. DIMENSIONS: ALL INTERIOR DIMENSIONS ARE TO FACE OF GWB OR TILE FINISH UNLESS OTHERWISE NOTED. EXTERIOR DIMENSIONS ARE TO NOMINAL CORNER OF MASONRY UNLESS NOTED OTHERWISE.
2. PLANS ARE TO BE VIEWED AND CONSTRUCTED WITH CIVIL, LANDSCAPE, STRUCTURAL, MEP/P AND ALL OTHER TRADES, AS APPROPRIATE. DISCREPANCIES ARE TO BE BROUGHT TO THE ARCHITECT'S ATTENTION FOR RESOLUTION BEFORE COMMENCING WORK.
3. ALL NON-ARCHITECTURAL INFORMATION SHOWN HERE IS FOR REFERENCE ONLY.
4. REFER TO CIVIL PLANS FOR LIMIT OF WORK.
5. REFER TO SMOKE SURETY PLANS FOR LOCATIONS OF SMOKE AND FIRE RESISTANT RATED CONSTRUCTION.
6. THE DISTANCES FROM THE INSIDE EDGE OF THE DOOR TO THE FACE OF ADJACENT PERPENDICULAR WALL SHALL BE 6 INCHES INCLUDING TRAVEL UNLESS NOTED OTHERWISE.
7. ALL VERTICAL AND HORIZONTAL PENETRATIONS THROUGH-RATED ASSEMBLIES ARE TO BE SEALED WITH UL-LISTED FIRE-RATING AND/OR SEALED ASSEMBLIES TO MAINTAIN RATING.
8. KEEP STRIP DRIPPIES AND ASSOCIATED ASSEMBLIES CLEAR OF THE REQUIRED PATH OF EGRESS.



St. Albans: Northwest State Correctional Facility - Booking Expansion

Project Status: Planning and programming in progress.

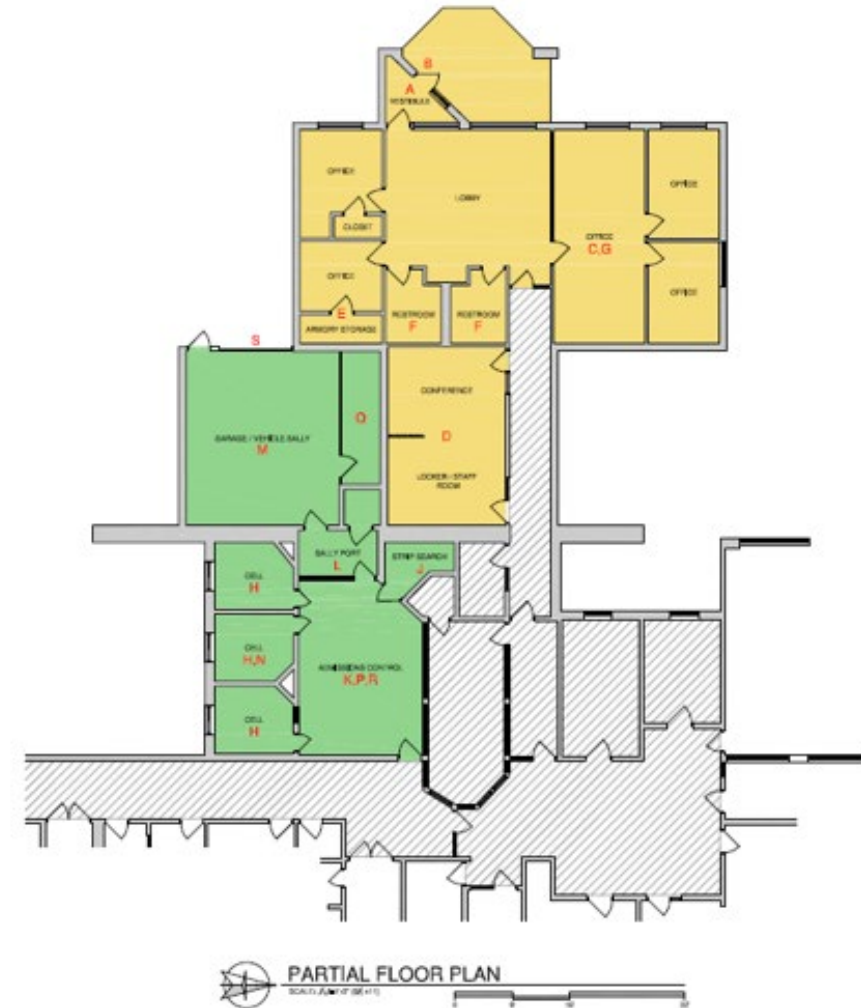
Project Scope: Provide conceptual designs based on the needs of the Department of Corrections (DOC). Provide an estimated cost of design and construction.

FY24 Appropriation: \$600,000 - Cash

Funding Encumbered: \$0

Funding Expended: \$0

FY25 Request: \$2,500,000



Statewide: Planning, Design and Construction for HVAC System Upgrades at Correctional Facilities

Project Status: Advertise for design in February.

Project Scope: Provide design and construction for short- and long-term air conditioning at:

- Southern State Correctional Facility
- Northern State Correctional Facility
- Northeast State Correctional Facility
- Caledonia Community Work Camp
- Northwest State Correctional Facility

FY23 Appropriation: \$500,000

Funding Encumbered: \$55,600

Funding Expended: \$55,600

FY24 Appropriation: \$300,000

Funding Encumbered/Expended: \$0

FY25 Request:

\$700,000+ 3,890,720 = \$4,590,720 - Bond

\$562,026 - Cash

