

The Child Development Division's Child Care Financial Assistance Program

Senate Health and Welfare Committee

February 7, 2023

Miranda Gray, Deputy Commissioner

Karolyn Long, Director of Operations



Agency of Human Services, Department for Children and
Families

Child Development Division

- Child Care Financial Assistance Program (CCFAP) Rate Structure and Eligibility Criteria
- Child Care Funding for Non-Citizens
- Child Care Funding Overview
- Breakdown Of Child Care Facilities and Providers



What is the Child Care Financial Assistance Program?

- The Child Care Financial Assistance Program is administered by the Child Development Division (CDD) as part of its mission to improve the well-being of Vermont's children.
- To do so, the program provides some or all the cost for early care, early education, and school age care for eligible families. This helps ensure all children, ages 6 weeks to 13 years (19 years for those with special needs), have access to quality child care.
- The CDD contracts with 11 Community Child Care Support Agencies (CCCSA) in the 12 AHS regions. Specialists in the CCCSA's help families find child care providers, apply for child care financial assistance, and determine eligibility.
- The program assists many different types of families whether caregivers are students, looking for work, retired, or working. In fact, a family of 3 with a household income of \$80,604 a year qualifies for some assistance.
- Current budget is \$62.75M which is a combination of GF and FF (Child Care Development Block Grant (CCDBG))

CCFAP Rates

- Rates were determined based upon using the 2019 Market Rate Survey and set at the 75th percentile.
- The CDD has a set cap on what the state will pay on behalf of a family. The state pays the capped rate or the providers rate, whichever is less, after subtracting the family share (if any).
- If a family uses more than one child care provider, the family share is paid to the provider that cares for the youngest child first.
- The portion the State will pay (if any) for an eligible family will depend on the family's application, the provider's rate agreement, the State's capped rates, and the amount the family is obligated to pay (family share).

Child Care Financial Assistance State's Capped Rates

Effective July 3, 2022

The State's capped rates are the maximum amount the State will pay to a child care provider on behalf of a family receiving child care financial assistance. The State will pay the lesser of the two: up to the provider's rate or the State's capped rate. To receive the maximum amount the State pays, a child care provider may need to increase their rates. For more detailed information about payments, which includes examples, please see our [fact sheet](#).

Licensed Care		1 STAR	2 STARS	3 STARS	4 STARS	5 STARS
Infant	Full-Time	\$290	\$297	\$300	\$314	\$349
	Part-Time	\$159	\$163	\$165	\$172	\$191
	Extended Time	\$394	\$403	\$408	\$427	\$474
Toddler	Full-Time	\$280	\$281	\$289	\$306	\$328
	Part-Time	\$154	\$156	\$159	\$168	\$180
	Extended Time	\$380	\$382	\$393	\$416	\$446
Preschool	Full-Time	\$275	\$280	\$288	\$300	\$325
	Part-Time	\$151	\$154	\$158	\$165	\$178
	Extended Time	\$374	\$380	\$391	\$408	\$442
School Age	Full-Time	\$225	\$231	\$245	\$250	\$275
	Part-Time	\$123	\$127	\$134	\$137	\$151
	Extended Time	\$306	\$314	\$333	\$340	\$374

Registered Home		1 STAR	2 STARS	3 STARS	4 STARS	5 STARS
Infant	Full-Time	\$200	\$203	\$207	\$210	\$225
	Part-Time	\$110	\$111	\$113	\$115	\$123
	Extended Time	\$272	\$276	\$281	\$288	\$306
Toddler	Full-Time	\$198	\$200	\$204	\$208	\$211
	Part-Time	\$108	\$110	\$112	\$114	\$116
	Extended Time	\$269	\$272	\$277	\$285	\$286
Preschool	Full-Time	\$190	\$195	\$200	\$205	\$210
	Part-Time	\$104	\$107	\$110	\$112	\$115
	Extended Time	\$258	\$265	\$272	\$278	\$285
School Age	Full-Time	\$185	\$190	\$195	\$198	\$200
	Part-Time	\$101	\$104	\$107	\$108	\$110
	Extended Time	\$251	\$258	\$265	\$267	\$272

Important Definitions

Authorized Hours of Care:

Full-Time Weekly – 26 to 50 hours a week

Part-Time Weekly – 1 to 25 hours a week

Extended Time – more than 50 hours a week

Child's Age

Infant – birth up to 24 months old

Toddler – 2 up to 3 years old

Preschool – 3 up to 5 years old

School Age – 5 up to 12 years old (19 if child has special needs)



How are Families or Caretakers Found Eligible for CCFAP?

- To be eligible for Child Care Financial Assistance, a family must:
 - Have a reason for child care (have a job, self-employed, looking for work, attending school or training, participating in Reach Up or has a special health need and need help caring for their child(ren), have a child with significant health or specialized development needs; an open case with Family Services or the family is experiencing significant stress)
 - Meet income guidelines
 - Be a Vermont Resident
 - Child receiving care must be a legal resident of United States

[CCFAP-Booklet.pdf \(vermont.gov\)](#)

Eligibility Criteria

- Per Federal Regulation 45 CFR 98.20 (a)(3)(I):
 - You must be a parent or primary caregiver responsible for children under the age of 13 years of age, or under 19 if incapable of self-care or under court supervision;
 - Characterize your financial situation as low income or very low income;
 - You must also be either employed or in some States enrolled in a training or education program.
 - Non-citizens are not eligible for Child Care Financial Assistance under federal regulation

Child Care Financial Assistance Income Guidelines

Effective July 31, 2022

Family Size	Gross Monthly Income								
	\$0	\$25	\$50	\$75	\$100	\$125	\$150	\$175	\$200
3 or less	\$ 2,879	\$ 3,359	\$ 3,838	\$ 4,318	\$ 4,798	\$ 5,278	\$ 5,758	\$ 6,237	\$ 6,717
4	\$ 3,469	\$ 4,047	\$ 4,625	\$ 5,203	\$ 5,781	\$ 6,359	\$ 6,938	\$ 7,516	\$ 8,094
5	\$ 4,059	\$ 4,735	\$ 5,412	\$ 6,088	\$ 6,765	\$ 7,441	\$ 8,118	\$ 8,794	\$ 9,470
6 or more	\$ 4,649	\$ 5,424	\$ 6,198	\$ 6,973	\$ 7,748	\$ 8,523	\$ 9,298	\$ 10,072	\$ 10,847

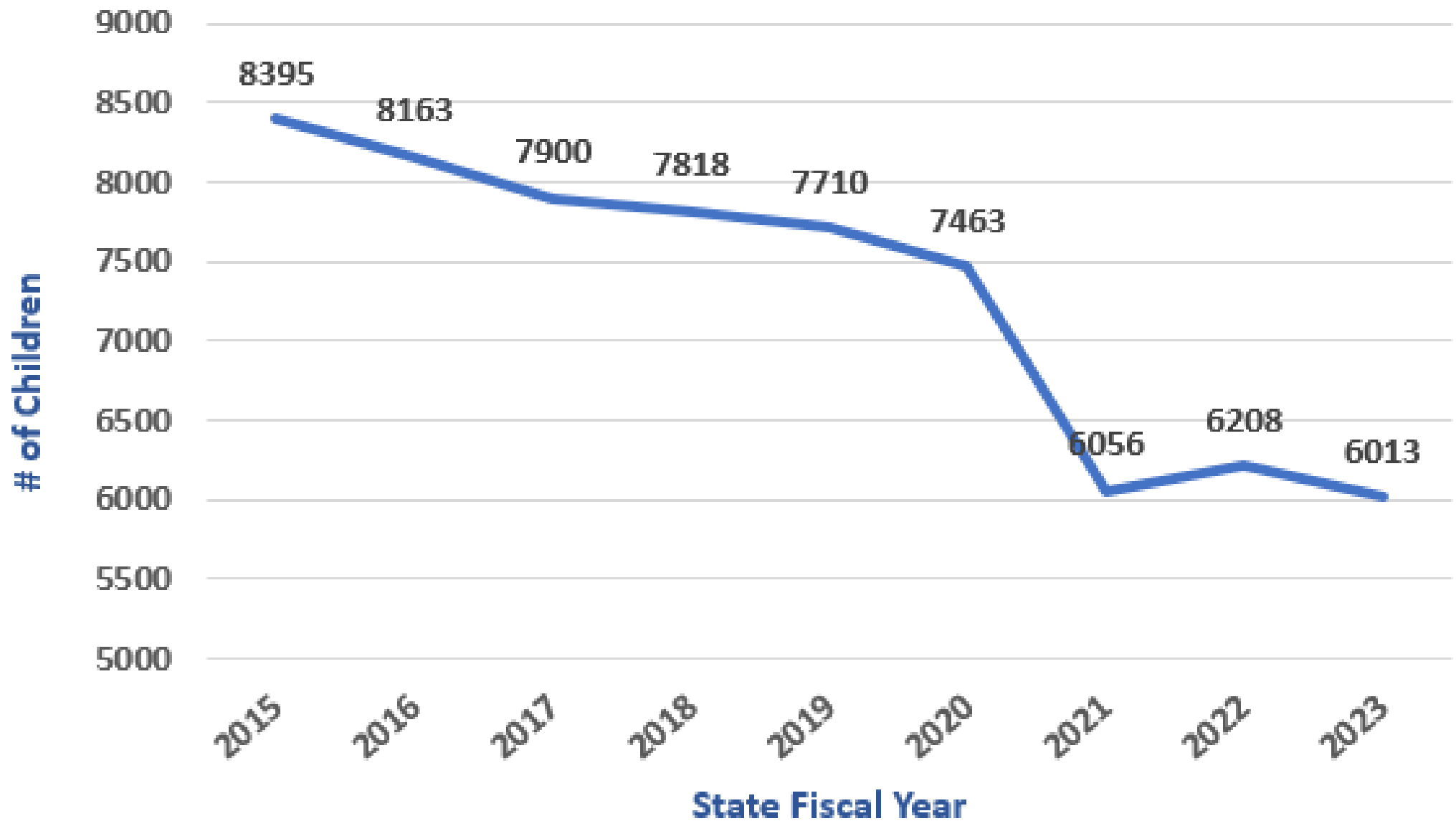
Child Care Financial Assistance Program Versus Overall Capacity

- CDD supports approximately 20% of the overall population accessing child care.
- This equates to 6,740 children currently.

Statewide Capacity by Age (Sept 2022):

• Infants	2,914
• Toddlers	3,216
• PreK	10,877
• School Age	<u>11,243</u>
Total	28,250

Average Number of Children Receiving CCFAP by SFY



CCFAP Families and Children Served

Utilization of the program: (for the month of Nov 2022)

FPL	Co-Pay	Children	Families
Under 150%	\$0*	4617	4173
151-200% FPL	\$25-\$50/wk	492	416
201-250% FPL	\$50-\$100/wk	726	651
251-300% FPL	\$100-\$150/wk	519	412
301-350%FPL	\$150-\$200/wk	386	281
Total		6740	5933

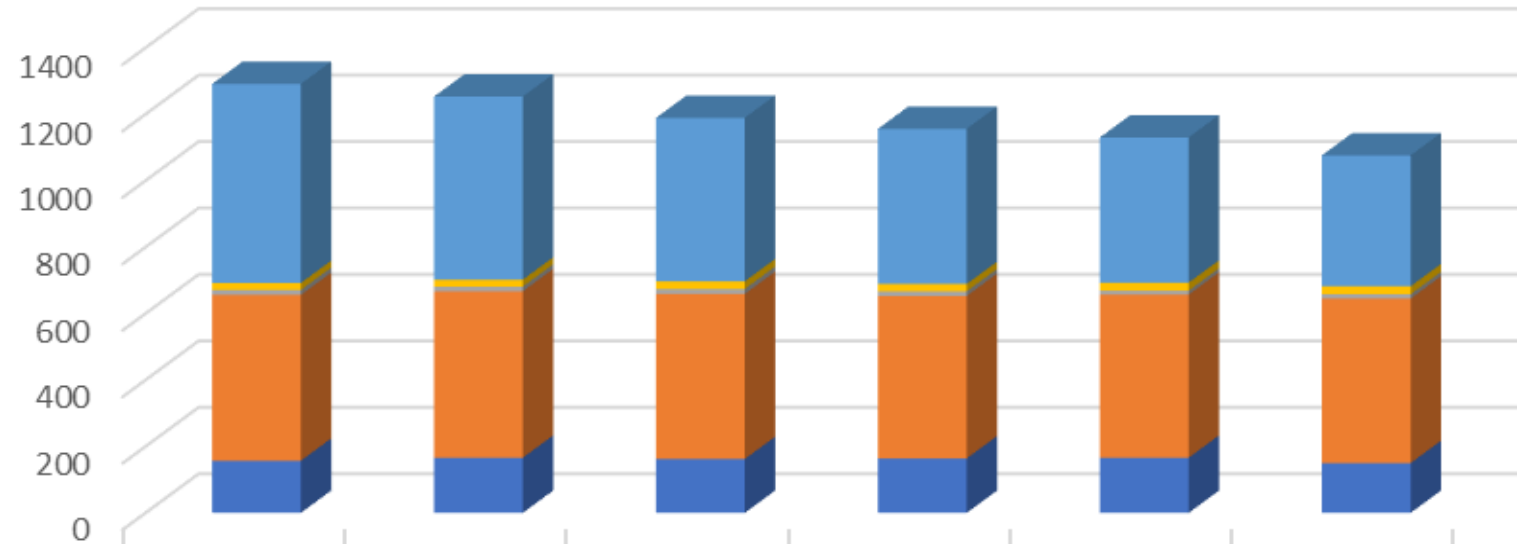
***Certain service needs (Family Support, Protective Services, Reach Up, anything with a DCF Adoption Assistance Agreement) are not income-sensitive and may be assigned a \$0 Family Share despite higher income.**

Child Care Financial Assistance Program Budget

- Federal Funding (\$25.8M)
 - Child Care Development Block Grant (CCDBG)
 - Temporary Aid to Needy Families Social Services Block Grant (TANF SSBG)
 - Family Service Division Federal Funding (support for children in our custody or otherwise eligible for Family Services Division services; IV-E (foster care eligibility) and IV-B (child welfare services of the social security act))
- Global Commitment (\$847K)
- State Funds (\$36.1M)
 - Global Commitment & Federal Funding earned based on eligibility of child and child care placement
 - These are capped Federal Funding Sources that are being fully utilized

Child Care Programs Over The Last 6 Years

of Child Care Programs
By Program Type



	Sept. 2017	Sept. 2018	Sept. 2019	Sept. 2020	Sept. 2021	Sept. 2022
Registered FCCH	599	551	492	467	437	394
Licensed FCCH	21	21	23	22	24	24
CBCCPP - Non-Recurring	15	14	15	14	12	13
CBCCPP	499	501	497	489	491	495
Afterschool Child Care Program	157	166	162	164	166	150

FCCH – Family Child Care Home

CBCCPP – Child Based Child Care and Preschool Program

Non-recurring – child care services to non-recurring clientele