

# GIS Property Assessments and Taxes



## *A Case Study on Summit County, Co.*

Presented by Esri, Inc.

*State of Vermont Senate Economic Development, Housing, and General Affairs*



Richard Leadbeater  
Director,  
State & Local Government Industry Solutions

Email: [rleadbeater@esri.com](mailto:rleadbeater@esri.com)

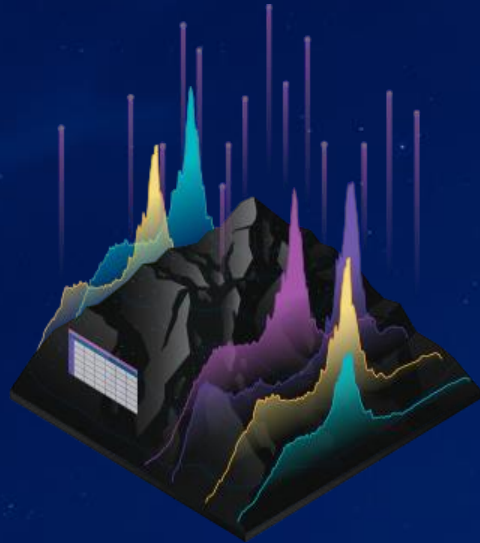
Office: 909-369-4448

Twitter: @PolicyMapper

*"My goal is to move the application of geographic analysis further into the conversations that define government policy and its operations."*

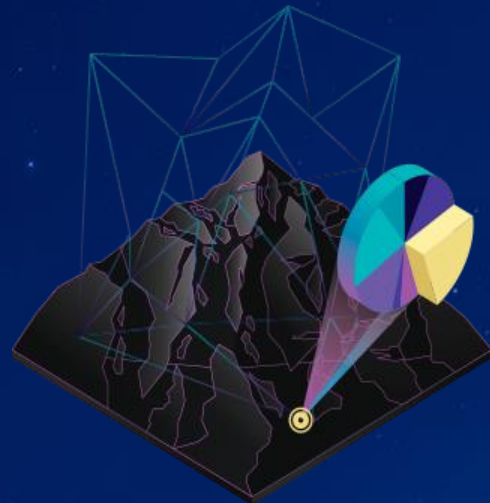
*"The data governments generate must be considered a valued resource that wants exploitation. I believe that data in the 21st century is what timber, iron, and coal were to the 19th century. Today, we talk about producing and mining data, but the real value is in the creation of finished goods."*

# The Many Elements of GIS...



## Data

GIS integrates many different kinds of data through spatial location.



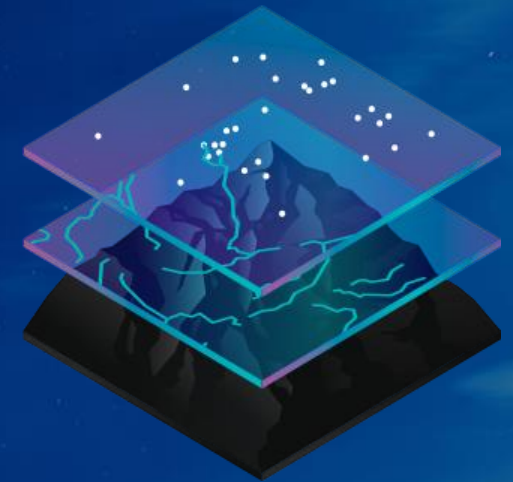
## Spatial Analysis

Location provides new perspectives to your insight and decision-making.



## Apps

Apps provide focused user experiences.



## Maps

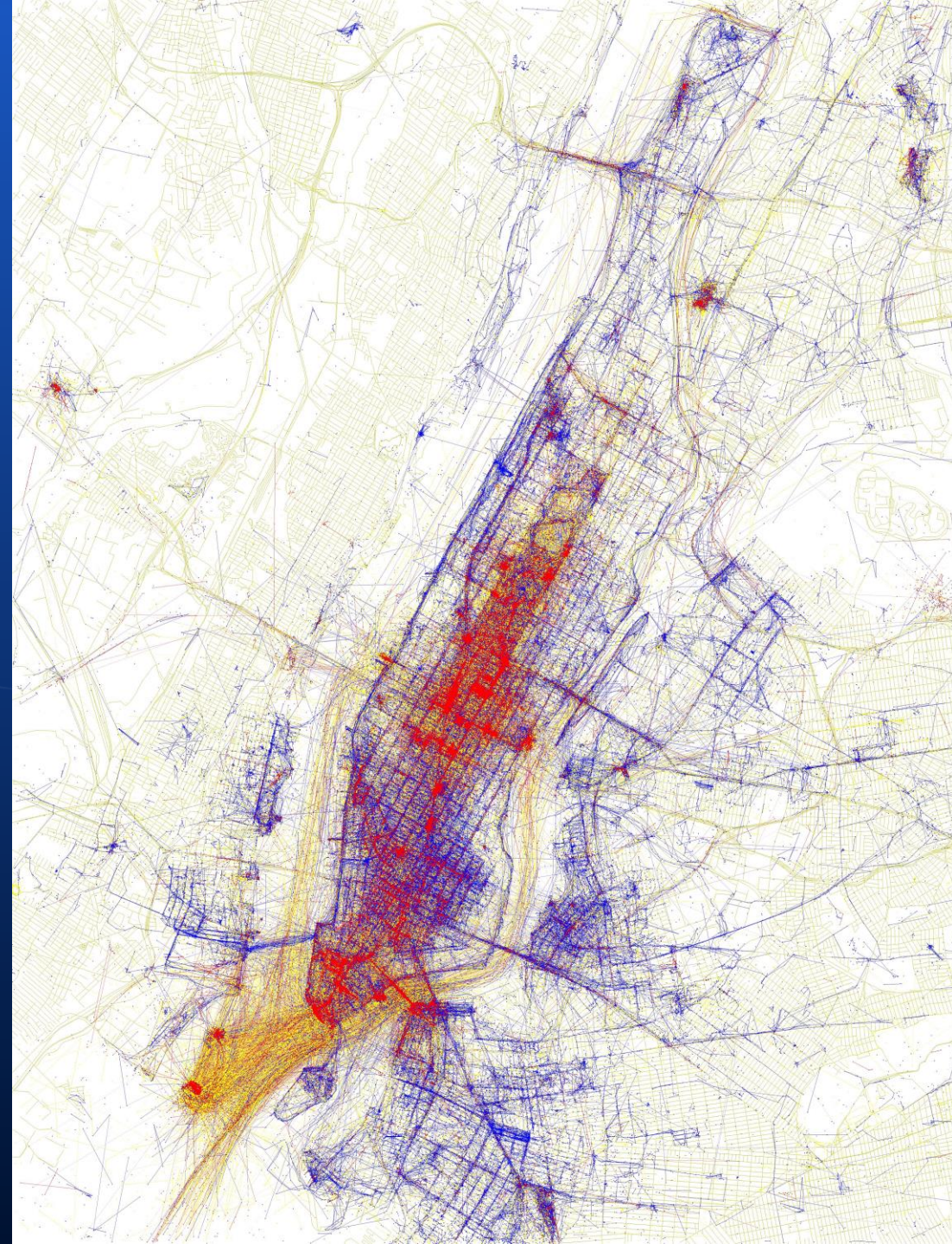
Maps are the geographic container.

# ArcGIS

Supports Three Fundamental Types of Systems

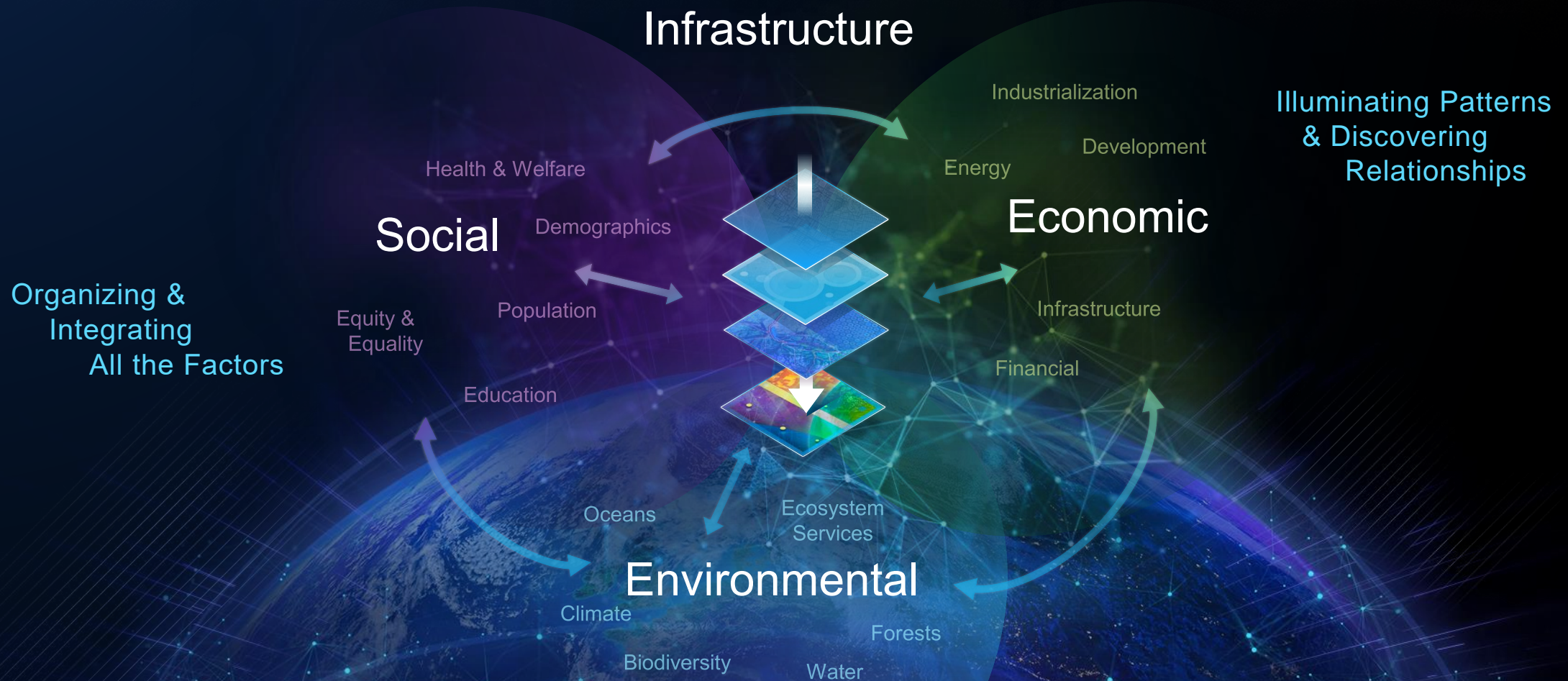


# GIS is An Enabling Framework



# Policy is a Geography Problem. . .

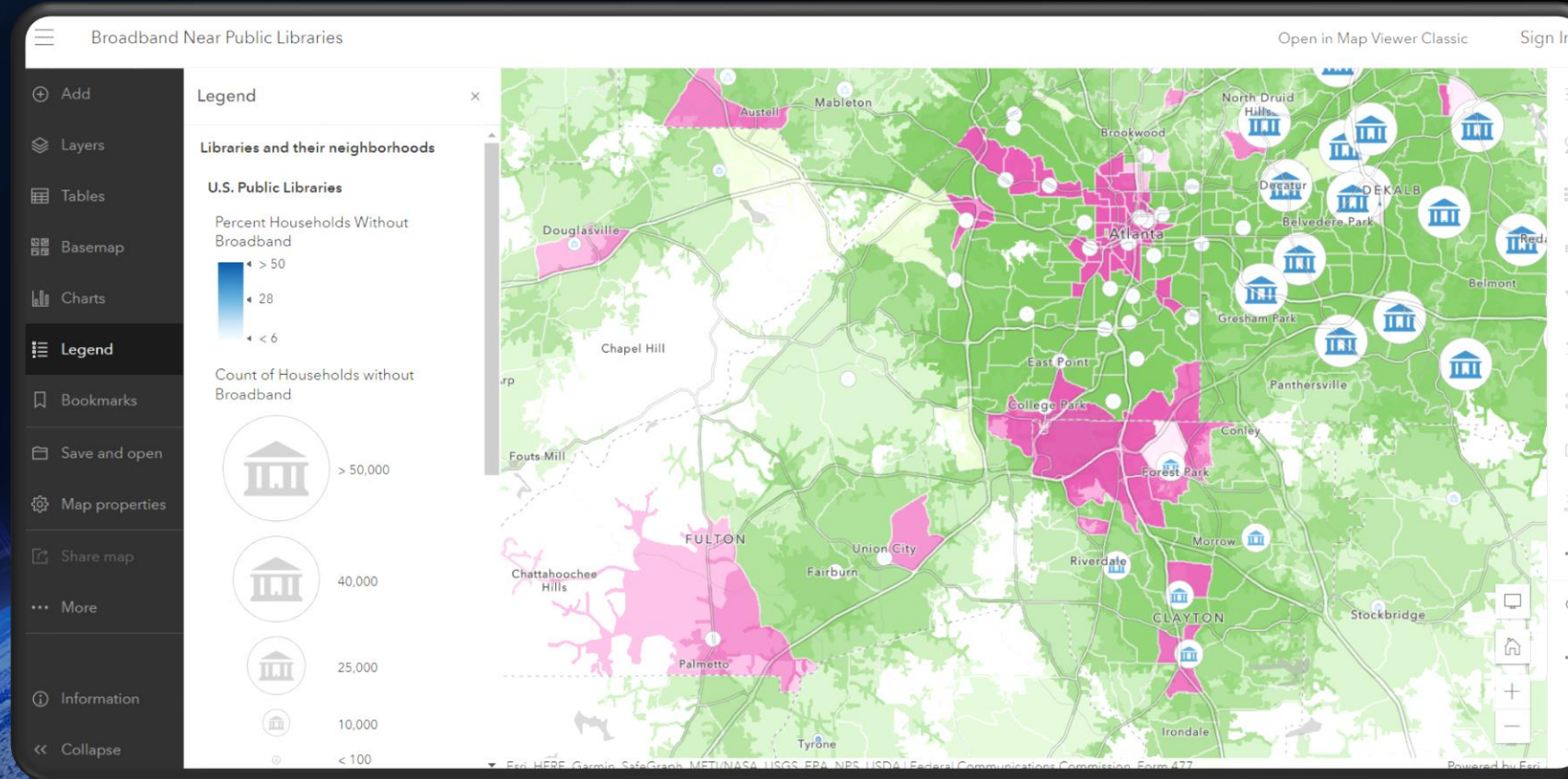
Geography Provides the Science & Fundamental Language



# Making Data Actionable

## Knowing What Data is Available

Broadband is a critical infrastructure that supports effective economic growth, education, workforce development, telehealth, and more. Strong broadband is a requirement for cities to compete in the global economy and provide equitable opportunities for their residents.



Where could dollars be spent to make an impact?

vs.

Where should dollars be spent to make the biggest impact?

# Summit County Addresses Short-Term Rental Boom with Data

*As home to popular vacation destination Breckenridge, Summit County, Colo., turned to GIS and data to create long-term policy solutions to issues around short-term rental properties.*



Create a Website Account - Manage notification subscriptions, save form progress and more. Website Sign In

SUMMIT COUNTY COLORADO

Your Government Departments Services About

Search... SC Alert

Special Communities Constituents Grants Higher Ed Local Open Cloud Network

ANALYTICS

## Summit County Addresses Short-Term Rental Boom with Data

As home to popular vacation destination Breckenridge, Summit County, Colo., turned to GIS and data to create long-term policy solutions to issues around short-term rental properties.

April/May 2023 - Stephen Goldsmith

Breckenridge, Colo. Shutterstock/Verge Images

Local governments often struggle to keep up with every development that requires changes in policy or operations. And the more dynamic those conditions, the greater the struggle to grasp the extent of the change, its local and geographic variations, and what new or updated regulations are necessary.

Summit County, Colo., knew as early as 2018 that big changes were afoot in terms of homeownership and residency patterns. The county includes Breckenridge, one of the country's most popular vacation destinations. Complaints started to come from locals concerning land use, noise and garbage in certain residential areas with a high concentration of

Stay on top of the latest state & local government technology trends.

Sign up for GovTech Today. Delivered daily to your inbox.

Email Address\*

FREE NEWSLETTER SIGN UP

Deliver on your mission. Without the friction.

Automation creates a simpler, more rewarding experience for everyone. See how at Together Public Sector DC.

Register now →

UiPath The Foundation of Innovation

Addressing

Property Information Search & Maps

GIS Products

GIS Open Data Information

Project & Road Naming Rules & Regulations

Contact Us

### Summit County GIS Open Data

Resolution 2017-03 adopted by the Summit County Board of County Commissioners in January 2017 authorizes Summit County Government to provide free and open geospatial data to government agencies and entities, members of the public and commercial businesses and establishes a data license fee schedule for other geospatial data.

#### Summit County GIS Open Data Disclaimer

Summit County has determined that its interests are best served by enactment of a resolution providing for use of a disclaimer in conjunction with the provision of County GIS data to public and private entities which states:

All data and information ("Products") contained herein are for informational purposes only. Although such Products are believed to be accurate at the time they were published, Summit County does not warrant that such Products are error free. Summit County provides these Products on an "as is" basis without warranties of any kind, either express or implied, including, but not limited to, warranties of title or implied warranties of merchantability or fitness for a particular purpose. Summit County shall not be liable for any direct, indirect, incidental, special or consequential damages arising out of the use of such Products, or the inability to use such Products or out of any breach of any warranty. The user acknowledges and agrees that the use of such Products is at the sole risk of the user.

SUMMIT COUNTY COLORADO

Notify Me®

Report a Concern

Bids & Proposals

Agendas & Minutes

Property Tax Info

[Summit County Addresses Short-Term Rental Boom with Data \(govtech.com\)](https://govtech.com)

### Most Read

Data Governance Guide Offers Models for Local Governments

New Tech Used to Thwart Ancient Predators Along New York Beaches

# Summit County Short-Term Rentals Case Study

- *Keeping up with Development required a change in Housing Policy*
- *Ownership and Residency patterns were changing.*
- *Increased complaints about land use, noise, garbage collection, traffic...*
- *Neighborhoods moved from 10% to 27% quickly*
- *Hosing Avg: \$500K 2019 vs >\$1M 2021*
- *Convince the State Law Makers that the county needed the ability to license STRs*

*Understand*

*Tæèféæ  
Thèåæii  
Üæåçèèéèck*

*Plan*

*Act*





# Summit County Short-Term Rentals Case Study

- *The new ordinance required:*
  - *Caps on STRs to 18% of Housing Stock*
  - *Owners / Property Managers obtain licenses before advertising STRs*
- *Issues:*
  - *More Parking vs. Mass Transit*
  - *How to Tax the rental property*

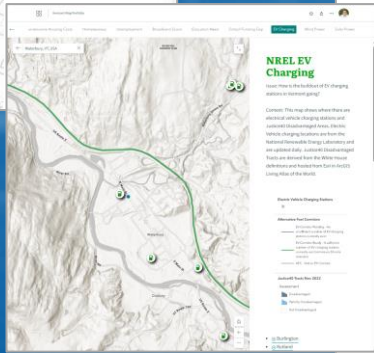
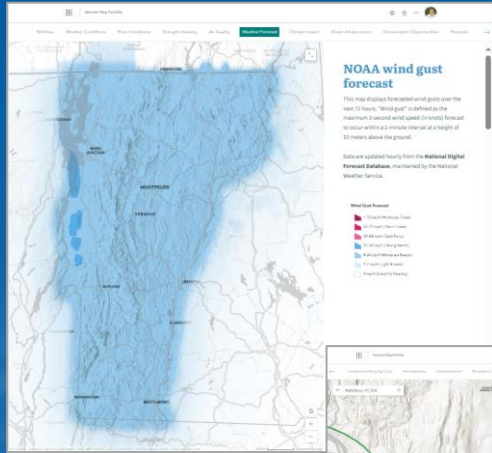
“Data is the key to everything we do. Without this data, it would be really difficult to show people what is happening,” she said, “and to be able to overlay other services such as bus stops and environmental concerns gives us a much more complete foundation for our decision-making.”

*County Commissioner Elisabeth Lawrence*



# Esri Living Atlas

## ArcGIS Living Atlas of the World



## Vermont Map Portfolio

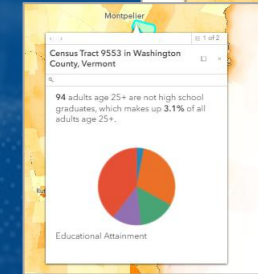
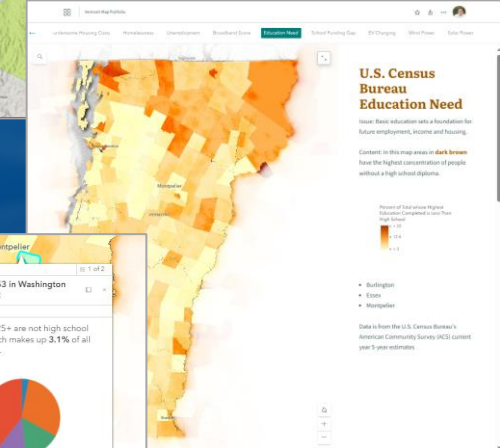
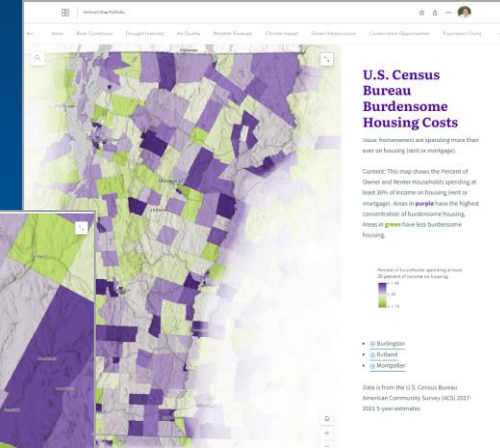
This collection of Vermont maps enables decision-makers to monitor current conditions in the Green Mountain State.

The map portfolio contains information from:

Federal sources - USGS, EPA, NOAA, NWS, NWC, Census, FCC, USDOT, CEQ, DOE and EIA

Maps are Compiled and Published by Esri.

- 1 Wildfires
- 2 Weather Conditions
- 3 River Conditions
- 4 Drought Intensity
- 5 Air Quality
- 6 Weather Forecast
- 7 Climate Impact
- 8 Green Infrastructure
- 9 Conservation Opportunities
- 10 Population Change 2000 to 2028
- 11 Population Change 2023 to 2028
- 12 Population Change 2010 to 2020
- 13 County GDP
- 14 Burdensome Housing Costs
- 15 Homelessness
- 16 Unemployment
- 17 Broadband Score
- 18 Education Need



Vermont Map Portfolio  
[arcgis.com](https://arcgis.com)



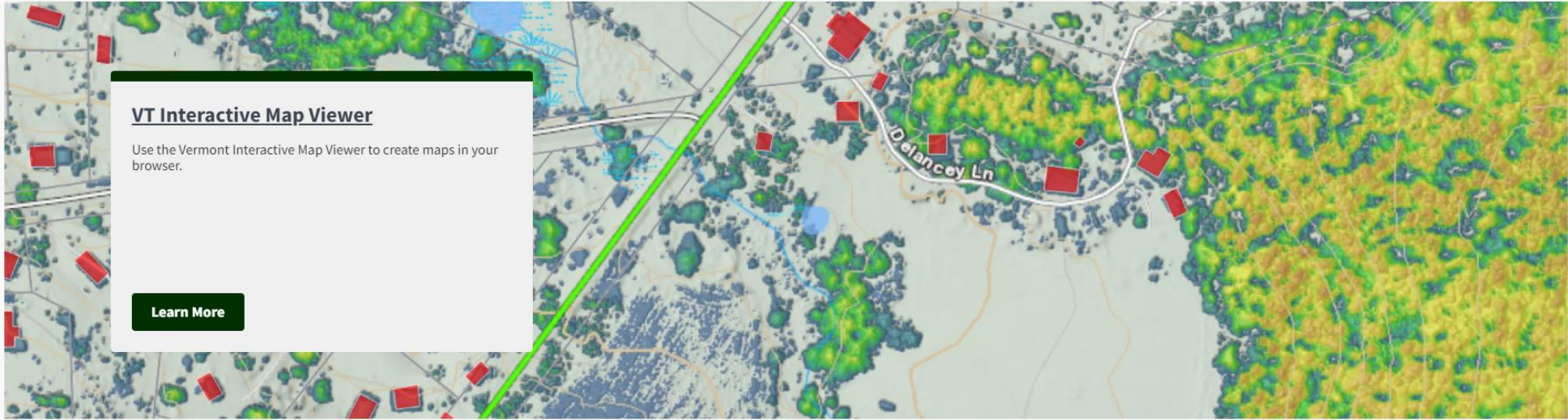
# Vermont Center for Geographic Information

An Official Vermont Government Website

Agency of Digital Services  
**Vermont Center for Geographic Information**

VERMONT

Search



**VT Interactive Map Viewer**

Use the Vermont Interactive Map Viewer to create maps in your browser.

[Learn More](#)




2 of 6

[Previous](#) [Pause](#) [Next](#)

Data and Programs

Resources

Maps



# Vermont GIS parcel data

VERMONT OFFICIAL STATE WEBSITE

STATE OF VERMONT  
**Vermont Open Geodata Portal**  
DATA WEB SERVICES APPLICATIONS DEVELOPERS CONTACT US HELP

## Parcels

Search, Find and View Available Vermont Parcel Data

### Datasets

These datasets are downloadable and contain the best available GIS parcel data we have received from each municipality to date.

#### Parcel Datasets

Vermont GIS parcel data is made available here as typically collected annually by municipalities. There are statewide datasets for parcel polygons and "inactive" parcel polygons (where available). A town by town extract of parcels is also available, as well as weekly-refreshed property transfers which may depict more current ownership of a parcel.

Choose which dataset you wish to use below:

Parcel Viewer waterbury

Show search results for wat...

waterbury

Show search results for wat...

**(1 of 2)**

**SPAN: 696-221-11604**

Parcel ID	902-0017.V
GIS Year	2022
Grand List Year	2022
Town	WATERBURY
Ownership	SMITH LACEY-ANN E, KISTNER BRITTANY A 17 WINDOSKI ST WATERBURY, VT, 05676
Property Description	0.38 AC & DWL/APT
Category (Real Estate only)	Residential-1
Resident Ownership Code	T
Total Acres	0.38
Zoom to	...

**SPAN: 696-221-11000**

Parcel ID	988-0314.
GIS Year	2022
Grand List Year	2022
Town	WATERBURY
Ownership	KELLY LIVING TRUST, BURTA KELLY TRUSTEE 115 LAKEVIEW DRIVE WILLISTON, VT, 05495
Property Description	108.28 AC & DWL
Category (Real Estate only)	Residential-2
Resident Ownership Code	S
Total Acres	108.28
Zoom to	...

44°20'22"N 72°45'21"W

100m

300ft

esri

*Parcels | Vermont Open Geodata Portal Your source for geospatial data*

# GIS Resources

## VERMONT

State Representative: John Adams

*VT Center for Geographic Information*

2021 Geospatial Maturity Assessment

2021 GMA Report Card

Geospatial Office

Clearinghouse

## Esri

State Account Manager : Scot DeCristofaro

*Esri Boston Regional Office*

35 Village Rd Middleton, MA

909 369-7096

[sdecristofaro@esri.com](mailto:sdecristofaro@esri.com)

# Appraising Property Using a GIS-Centric Workflow

Annual Visual Inspections by the Shawnee County Appraiser's Office

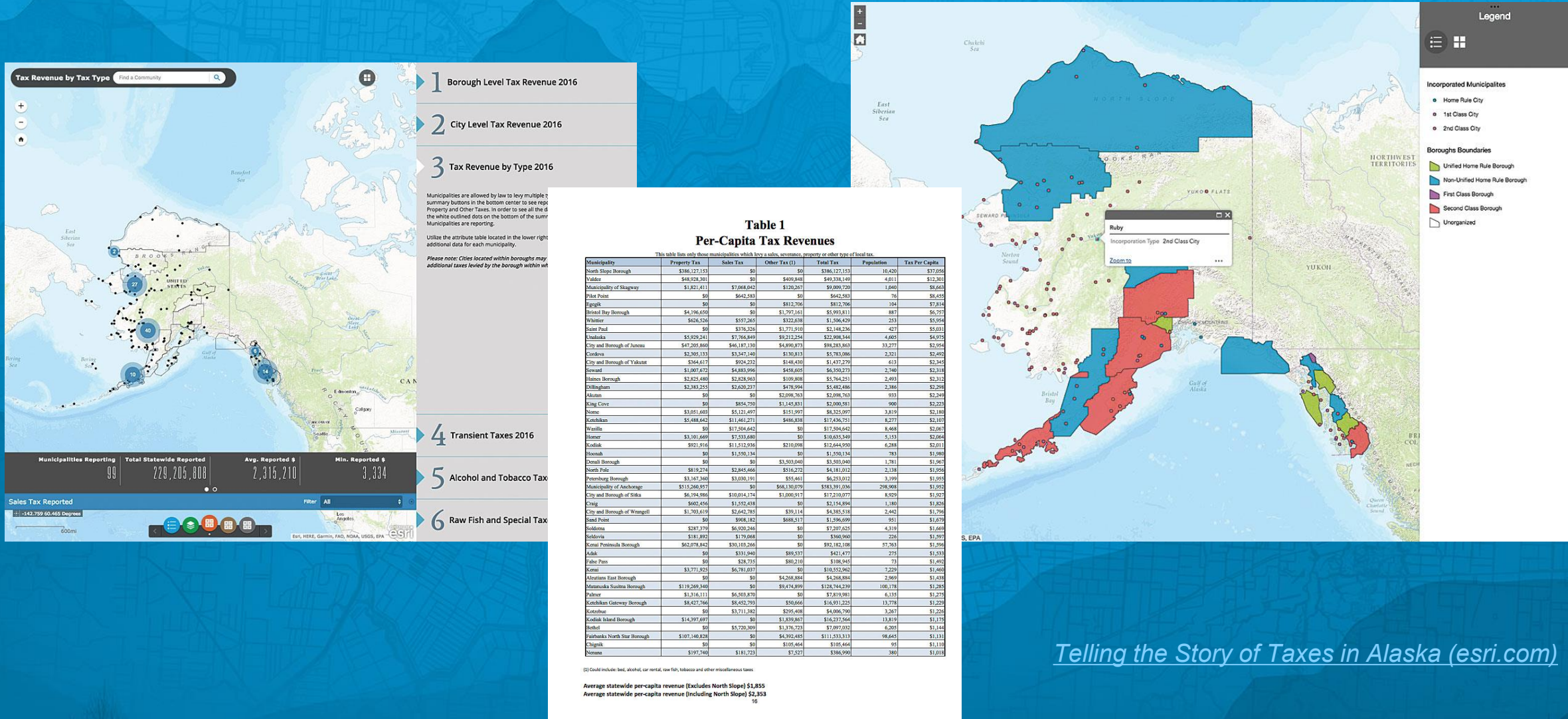
The screenshot displays a GIS application interface with several key components:

- Property Details Panel (Left):** Shows information for property R29355, including its location (39.02127484N, 95.60802759W), address (2536 SE PECK RD), and class (1101-Single family residence (detached)).
- Progress Dashboard (Middle-Left):** A vertical stack of metrics for 'MODEL 12':
  - Percentage Completed: 93.9%
  - Completed Properties: 3,703
  - Properties Remaining: 258
  - Total Properties: 3,961
- Summary Dashboard (Middle-Right):** A vertical stack of metrics for 'MODEL 12':
  - Percentage Completed: 100%
  - Completed Properties: 3,961
  - Properties Remaining: 0
  - Total Properties: 3,961
- Map (Right):** A map of Topeka, Kansas, with green circles of varying sizes representing properties. The map includes labels for Silver Lake, Menoken, Topeka, Belmont, Tecumseh, Highland Park, Math, Terra Heights, Montara, Berryton, and Watson.

*Shawnee County Appraiser's Office Uses a GIS-Centric Workflow (esri.com)*

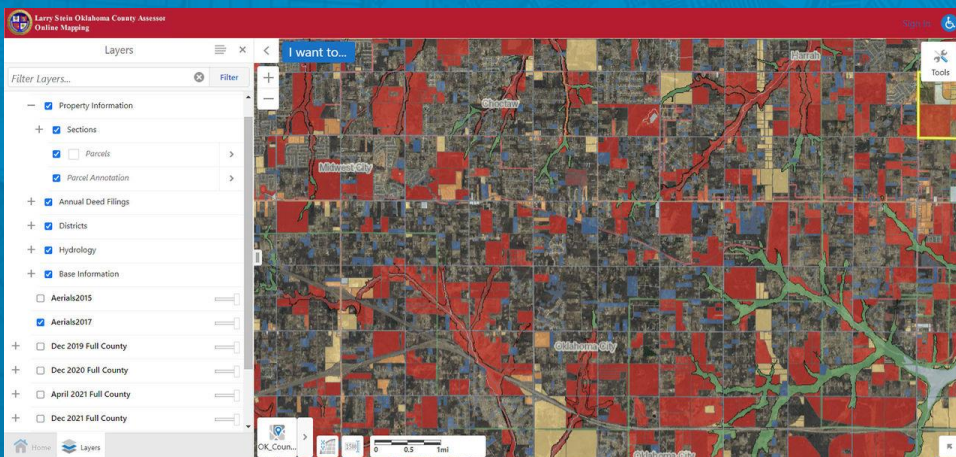
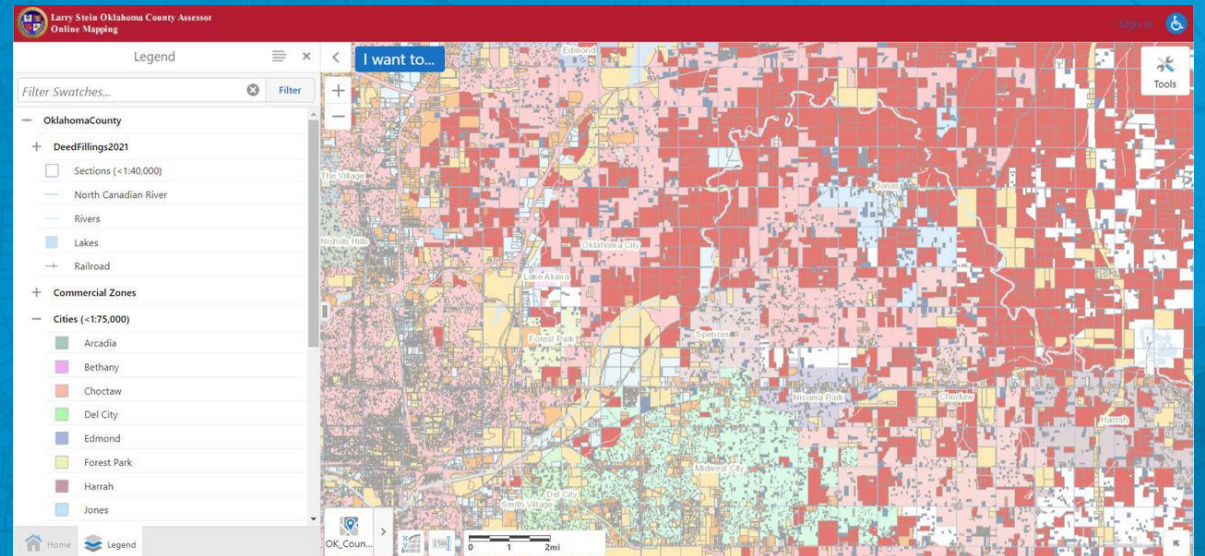
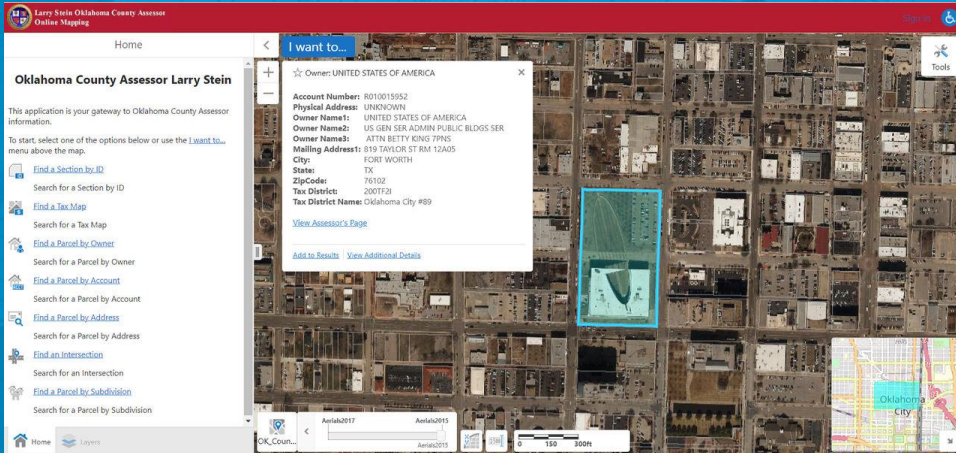
# Telling the Story of Taxes in Alaska

## 164 independent municipalities levy their own sales and property taxes



# Oklahoma County's Assessor's Office Modernizes Workflows

## A Comprehensive System of Records

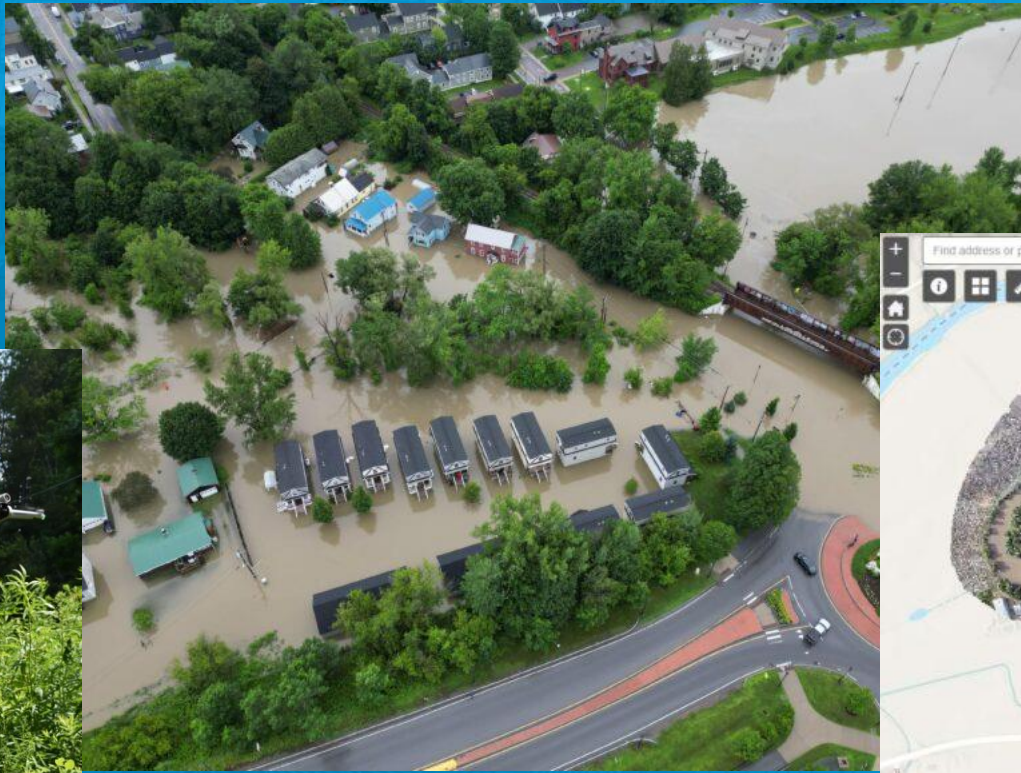


*Oklahoma County's Assessor's Office Modernizes Workflows with GIS (esri.com)*



# Drone Imagery Speeds Flood Response

New Technology, Public Safety, and Economic Recovery



*[Drone Imagery Speeds Flood Response \(esri.com\)](https://www.esri.com)*

# Bozeman, Montana, Builds a Path to Economic Recovery

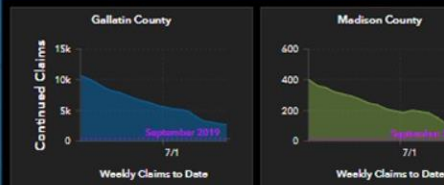
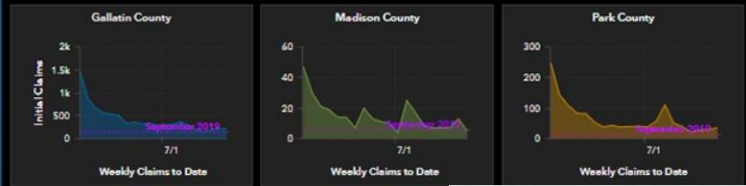
## Business, Tourism, and Development

### Business

#### Unemployment

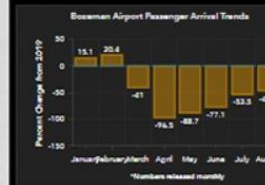
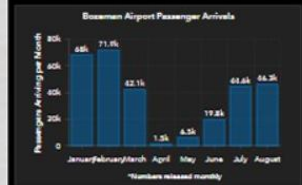
Unemployment data is provided by the Montana Department of Labor & Industry. This information is updated weekly, following the Montana labor market [job tracking dashboard](#).

Hover over data points to see values.



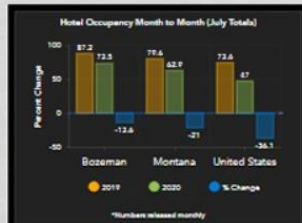
#### Airport

The [Bozeman Yellowstone International Airport](#) serves as a gateway to tourism and travel throughout the region. While several markets have been temporarily discontinued, non-stop services to select markets through the course of the summer will remain in place.



#### Hotels

Hotel occupancy data is used as a measure of recovery by observing trends compared to national averages. This information is provided by the [Montana Lodging and Hospitality Association](#), which releases data updated monthly by [Smith Travel Research](#).



#### Yellowstone National Park



### Development

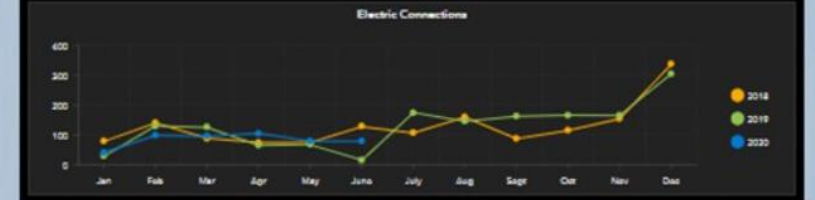
#### Building Permits

Building Permits information provides an important measure of progress within the construction industry. Data for the City of Bozeman is updated monthly by the [Building Permits](#).



#### Utility Connections

Electric and natural gas utility connections offer a snapshot of new development occurring throughout the area. NorthWestern Energy provides both historic and current information for Bozeman on a monthly basis.



#### Business Licenses

New applications and renewals for business licenses within the City of Bozeman are updated monthly by the [Community Development Department](#).



# Resilient by Design

*To be resilient, communities must use GIS to:*



## Serve as a System of Record for Analyzing Historic Patterns

The locations of some shocks aren't always as finitely predictable, such as earthquakes, wildfires or tornados. However there are ways that GIS can still be used to plan for these events, such as plan fire lines or controlled burns. Using historic storm tracks and demographic information, GIS can also be used to identify where community storm shelters would be most useful.



## Establish Broad Availability of GIS

When it comes to response and recovery, accessibility of GIS is critical to the planning process. Simple web apps that display damage assessment, search and rescue, and emergency facility monitoring, can be put right in the hands of experts in the field. That way, information can be immediately transmitted back to an emergency operations center, where incident command can stay informed and make quick, data-driven decisions.



## Empower Community Leaders to Make More Data-Driven Decisions

Using GIS to inform and empower community leaders across fields is a critical aspect of resiliency planning. These leaders decide where and how to prioritize resilience efforts. So providing them with the web maps and apps that outline vulnerable areas, provide analysis or visualize design alternatives is critical to these conversations - and that's what GIS delivers every day.



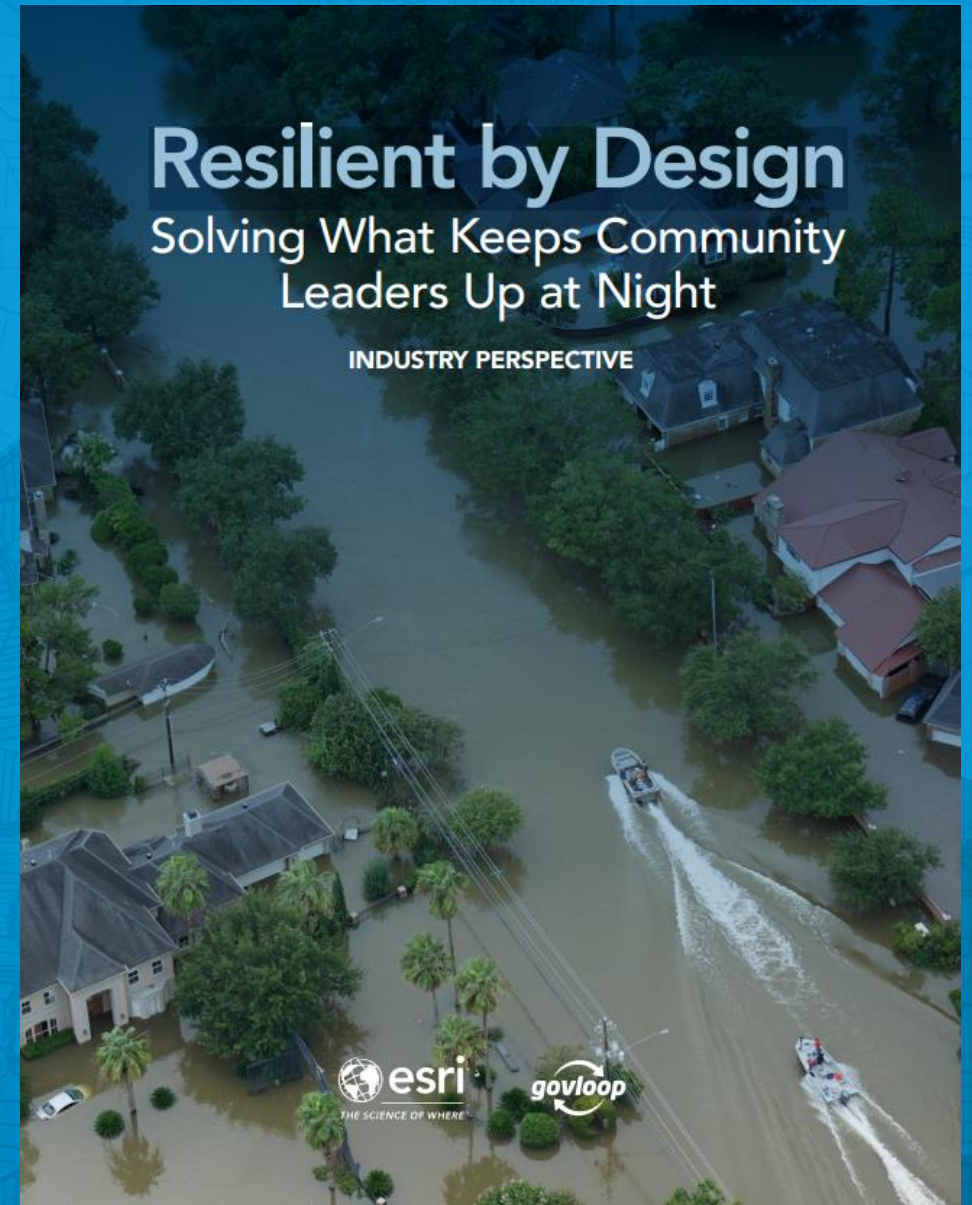
## Create Genuine Citizen Engagement

Government leaders don't work in a vacuum. GIS can help create genuine citizen engagement. As technology has changed, so have the expectations of the public. They expect to be able to communicate with others, including their government, on their own terms and timeline. Simply relying on traditional public notification is insufficient in today's modern world. GIS can provide apps that allow the public to be informed about resiliency efforts, provide feedback through comments and even maps that go back to leadership to help the latter understand their concerns and priorities.



## Carry Out Scenario Planning and Analysis

Finally, GIS can help us locate challenges and problems such as traffic congestion or blighted neighborhoods, as well as aid a community to play out different development and design scenarios to correct these issues. The fact is that stressors on a community are often tied together - few are independent of other forces. Fortunately, GIS can help understand how rectifying one stress can also alleviate other stresses. For example, many communities are seeing rapid growth in their downtown areas as younger citizens move in. A community could use GIS to visualize new affordable housing downtown, measure the number of new residences and employees for area businesses, predict the revenue impact for the neighborhood and analyze the impact this has in reducing traffic congestion.



# Resilient by Design

## Solving What Keeps Community Leaders Up at Night

INDUSTRY PERSPECTIVE



[Building a Mobile Government Strategy With GIS \(govloop.com\)](https://www.govloop.com)

# Managing and Applying Land Information

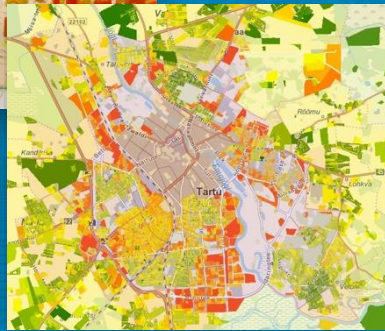
## Parcel Data Management

Average Appraisal Value



Cobb County  
Cobb County, Georgia

Land Valuation



Estonian Land Board  
Tartu, Estonia

Standard Tax Map



Parcel Fabric



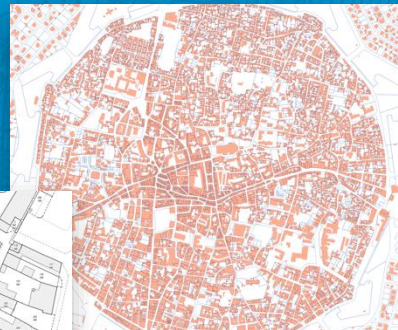
Madera County  
(Pro-West & Associates)  
California

Standard Tax Maps



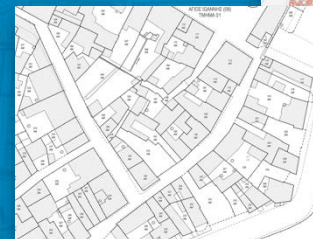
OC Public Works  
California

Official Cadastre Plan

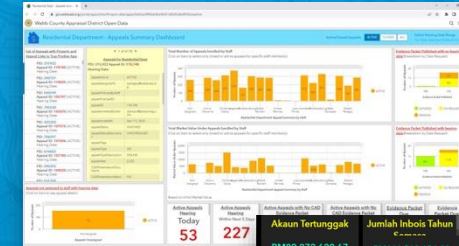


Cyprus National Cadastre  
Cyprus

Standard Property Demarcation

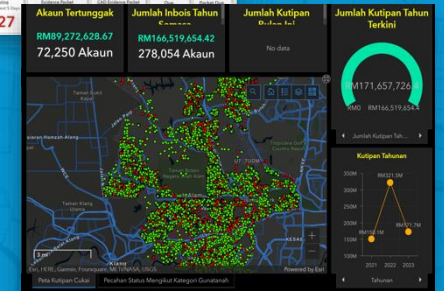


Managing Property Valuation Appeals



WEBB CAD  
Laredo, Texas

Managing Tax Collection



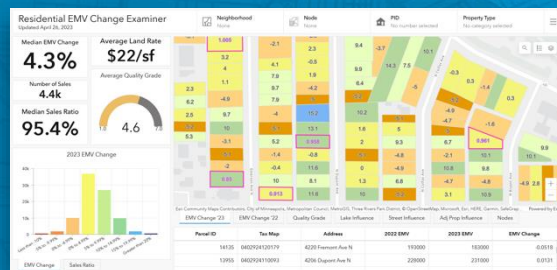
Majlis Bandaraya Shah Alam  
Malaysia

Integrated 3D Buildings and Cadastre



Lik On Technology  
Kowloon, Hong Kong

CAMA-Based Property Assessment



City of Minneapolis  
Minnesota

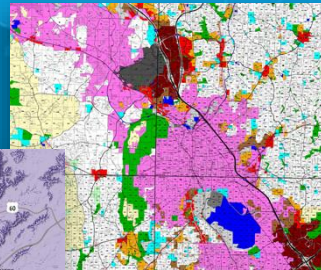
# Urban and Regional Planning

## Zoning Management



City of Seguin  
Texas

## Comprehensive Land-Use Plan



Cobb County  
Government  
Cobb County, Georgia

## Development Suitability



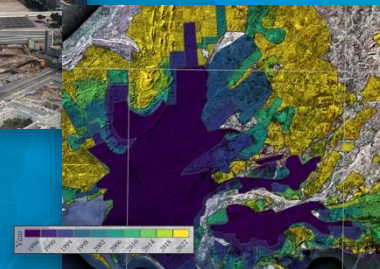
Houseal Lavigne Associates  
Fayette County, West Virginia

## 3D GIS—Living Digital Twin



Lands Department  
of Hong Kong  
Hong Kong Special  
Administrative Region

## Visualizing Urban Sprawl



Maryam Khan  
Karachi, Pakistan

## World Cup (FIFA) Planning



The Center for GIS  
Doha, Qatar

## Urban Plan Visualization



Prague Institute of Planning  
and Development  
Czech Republic

## 3D Basemaps



Hillsborough County  
Florida

## Proposed Building Evaluation



Borough of  
State College  
State College,  
Pennsylvania

## Rezoning Evaluation

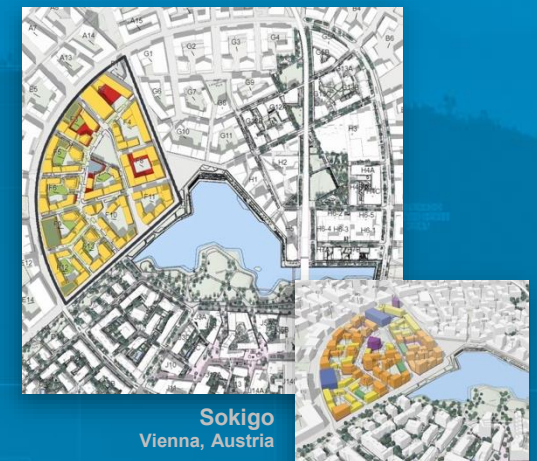


## Proposed Project Information Report



Paris-Saclay Development Authority  
France

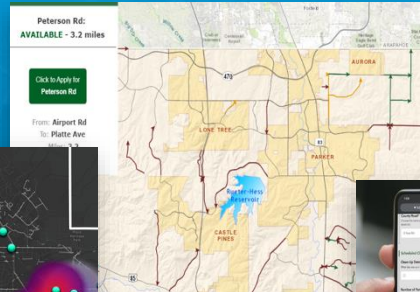
## Urban Design & Carbon Assessment



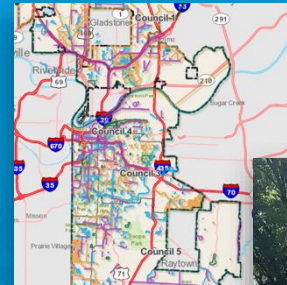
Sokigo  
Vienna, Austria

# Public Engagement and Collaboration Portals

Adopt-a-Road



Capital Projects Transparency



Visualizing Future Construction



Geospatial Hub



Digital Atlas



Statewide Maps Portal



City of Reno Nevada

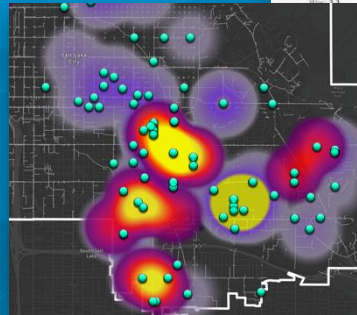


Geoscience Australia Australia

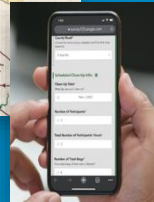
Open Data



Adopt-a-Storm Drain



Douglas County Government Colorado



Kansas City, Missouri

inCitu New York City, New York

Salt Lake City Department of Public Utilities Utah

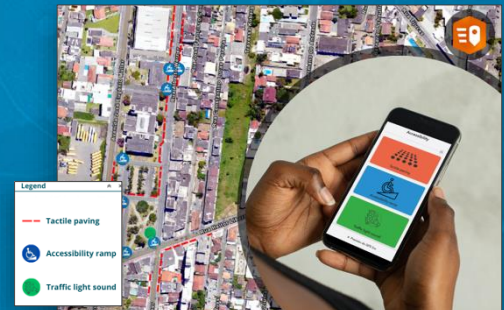
Real-Time Snowplow Reporting



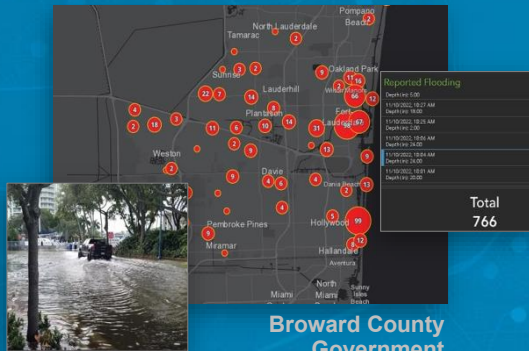
3D Virtual City Explorer



Mapping Accessible Routes for People with Disabilities



Crowdsourcing Flood Damage



Broward County Government Florida

Pro-West & Associates Polk County, Minnesota

Serviço Geológico do Brasil Rio de Janeiro, Brazil

Município de Itajaí Brazil



World Leader in Geographic Information Systems (GIS)

Over 10 Million Users

**33,000** Businesses

**12,000** Colleges & Universities

**8,600** Utilities

**12,600** NGOs

**1,200** National Government Agencies

**12,000** States & Regional Agencies

**30,800** Cities & Local Governments

*Growing, Strong and Impactful*



# Planning for and Responding to Disasters

NATO Command Responding to Türkiye Earthquake



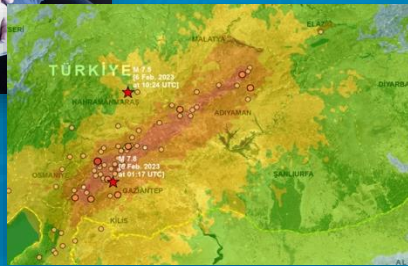
NATO Türkiye

International Search & Rescue Coordination



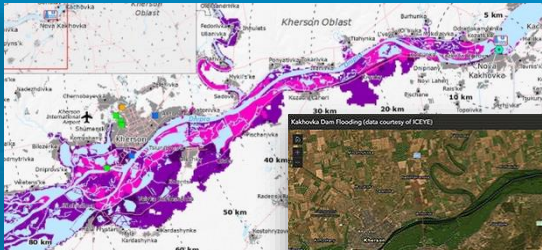
INSARAG Türkiye

Impact & Situational Awareness



UNOSAT Türkiye

Flooding from Dam Sabotage



Esri BeLux Ukraine



ICEYE Ukraine

Tornado Damage



PAGis Little Rock, Arkansas

Storm Surge



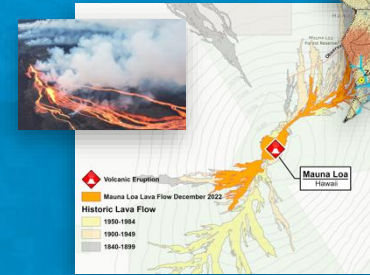
Hillsborough County Florida

Monitoring Hurricane Ivan



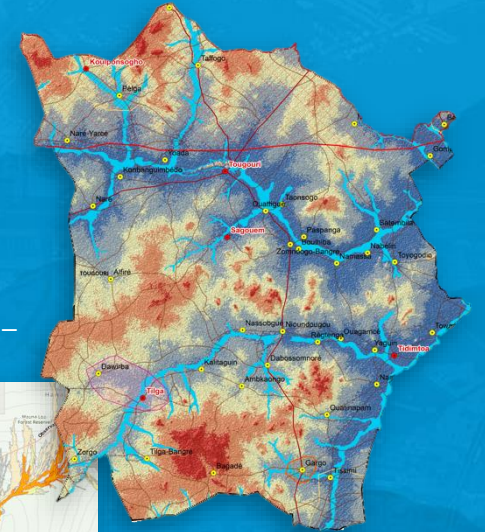
Highlands County Board of County Commissioners Florida

Volcanic Eruption – Mauna Loa



US DHS The Big Island of Hawaii

Multifactor Risk Zones



Winrock International Burkina Faso, West Africa

Analyzing Wildfire History



University of Haifa Haifa, Israel

Wildfire Modeling



Technosylva California

Fire Damage Inspection

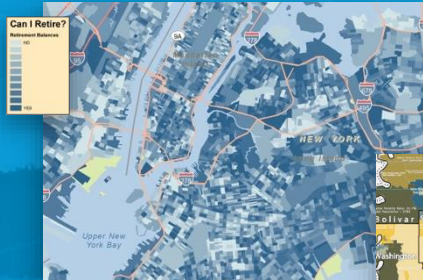


CAL FIRE Tulare County, California



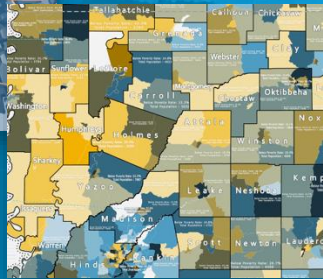
# Census, Population and Demographics

Retirement Affordability



RPM Consulting  
New York City, New York

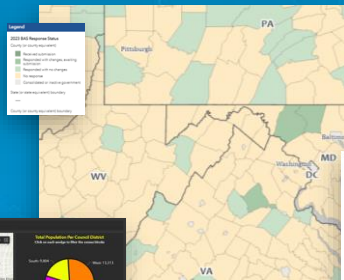
Extreme Poverty



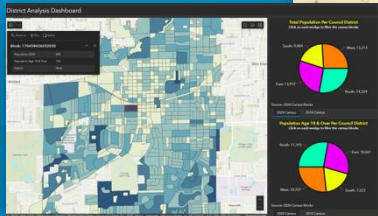
Map Ideation  
Mississippi

Boundary Management

Administrative Boundary Management

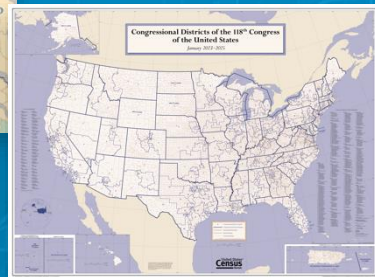


Redistricting  
(Using 2020 Census)



City of Wheaton  
Illinois

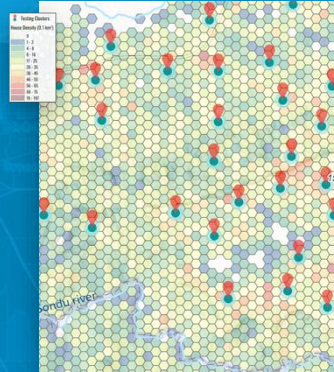
Congressional Districts of the 118th Congress



US Census Bureau  
US | Puerto Rico

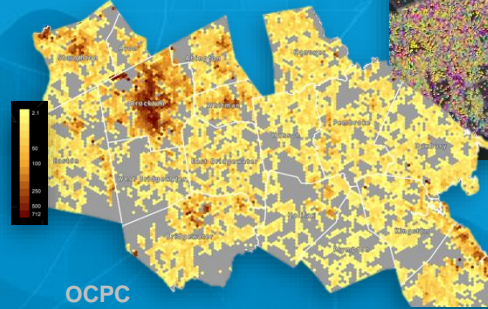
Mapping

Estimated Household Density  
(Using Imagery & Deep Learning)



UC Irvine  
Kenya, East Africa

Population Density  
(Hex Bins)



OCPC  
Massachusetts

Population & Ethnicity  
(Dot Density)



Te Pūkenga Open Polytechnic  
New Zealand

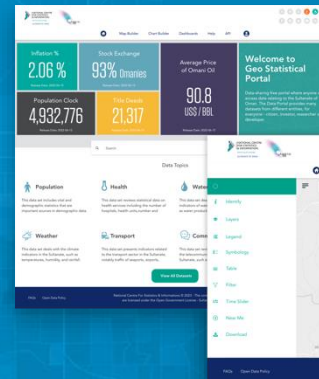
Population Growth  
2010–2020



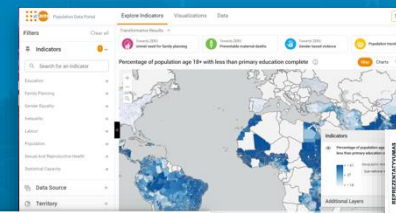
St. Johns County  
GIS Division  
Florida

Portals

Geostatistical Portal



UN Population Data



National Census Infographics



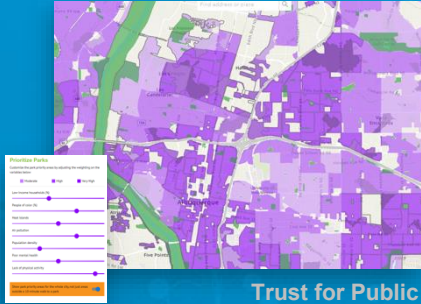
Statistics Lithuania  
Lithuania

UNFPA

Khatib & Alami  
Oman

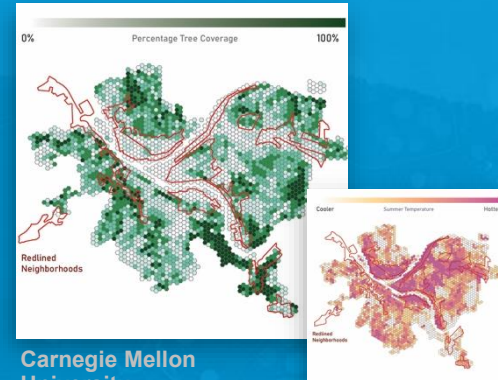
# Social Equity

### Park Planning & Social Equity



Trust for Public Land | Innovate US

### Tree Cover & Summer Temperatures in Redlined Areas

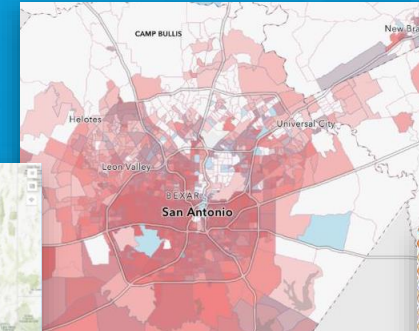


Carnegie Mellon University  
Pittsburgh, Pennsylvania

### Environmental Justice Areas

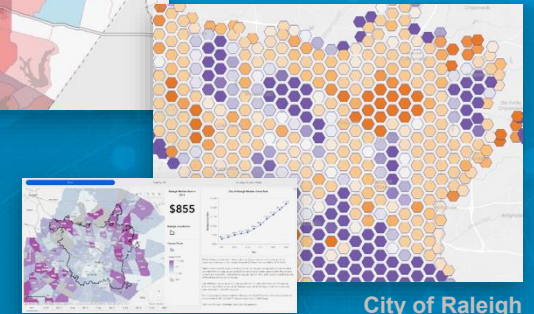


CalEnviroScreen  
California



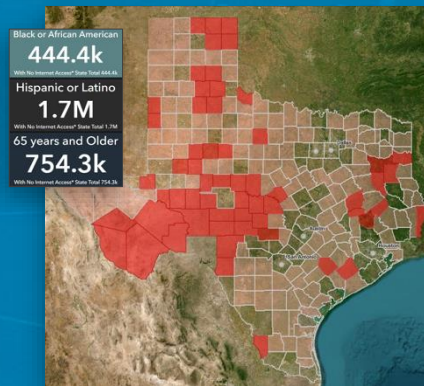
Alamo Area MPO  
San Antonio, Texas

### Racial Equity & Social Justice



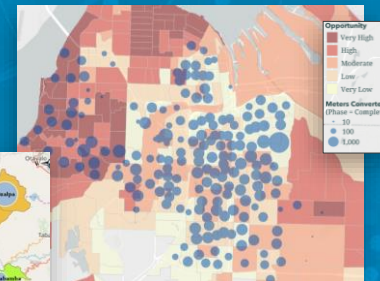
City of Raleigh

### Access to Legal Services & the Digital Divide



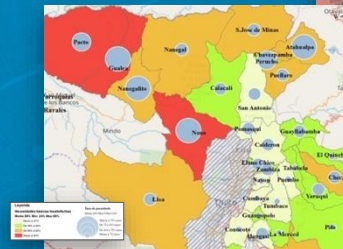
Self-Represented Litigation Network  
Texas

### Infrastructure Investments & Equity Index



City of Tacoma  
Washington

### Poverty & Unsatisfied Needs



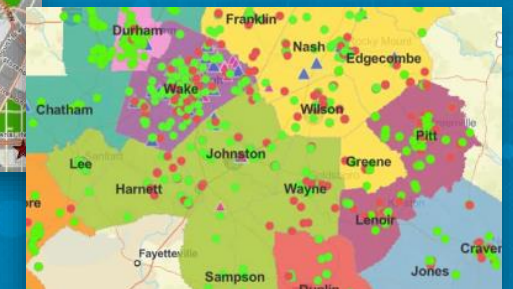
Ministerio de Salud Pública  
Quito, Ecuador

### Low Income & Food Deserts



Retail Profit Management  
US

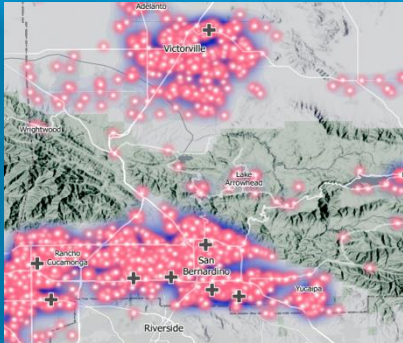
### Food Bank Operations



Food Bank of Central & Eastern North Carolina

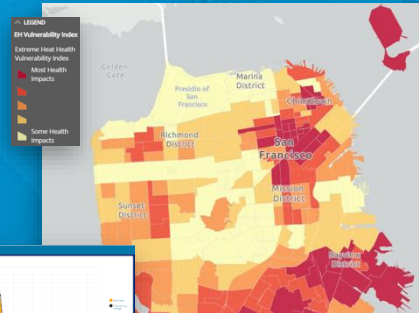
# Health and Human Services

## Stroke Patients



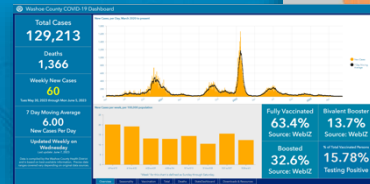
San Bernardino County California

## Heat and Vulnerable Population



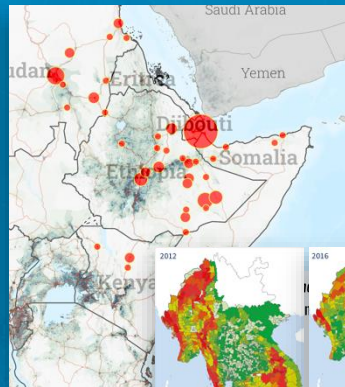
City of San Francisco California

## COVID-19 Monitoring



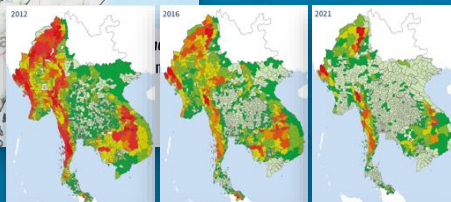
Washoe County Nevada

## Malaria and Population



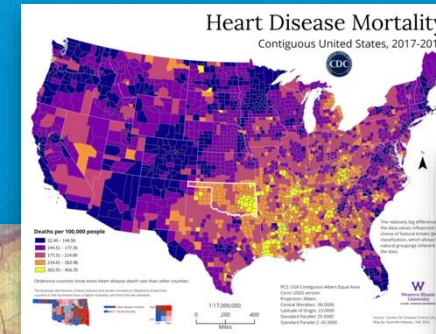
UC Irvine East Africa

## Malaria Incidence



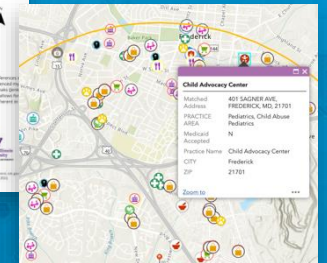
WHO Southeast Asia

## Heart Disease Mortality



Western Illinois University US

## Resources for Victims of Domestic Violence



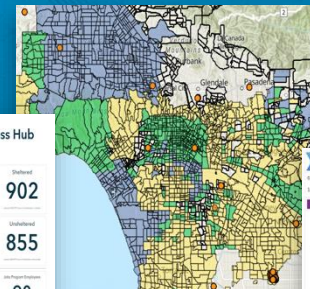
Mid-Shore Council on Family Violence Maryland

## Access to Health Facilities



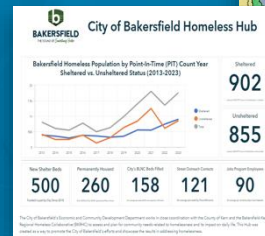
Columbia University Gombe District, Zambia

## Homeless Point-In-Time Survey



Los Angeles Homeless Services Authority California

## Homeless Dashboard



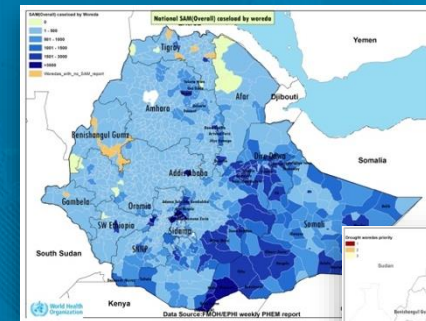
City of Bakersfield California

## Community Profile



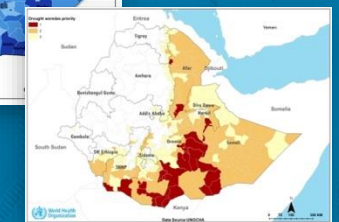
YMCA of the USA Dallas, Texas

## Acute Malnutrition



WHO Ethiopia

## Drought Hot Spots



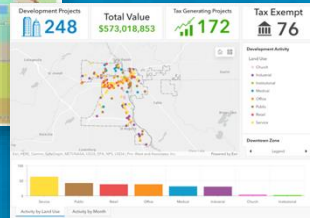
# Business and Economic Development

In-Person Banking Preference



RPM Consulting  
Palm Springs, California

Economic  
Development  
Dashboard



Pro-West & Associates  
St. Cloud, Minnesota

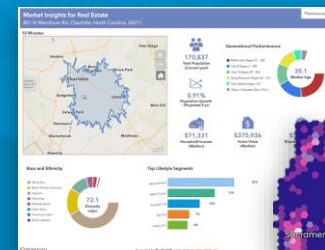
Monitoring Customer Inquiries



Wyndham City Council  
Melbourne, Australia

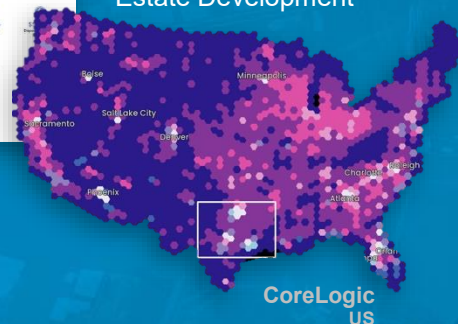
Modeling  
Consumer Behavior

Real Estate Prospecting



Datastory  
Charlotte, North Carolina

Forecasting Real  
Estate Development



CoreLogic  
US

Support Centers &  
Service Area Coverage



Cisco Systems  
Global

Visualizing  
Port Disruptions



International Monetary Fund

Monitoring  
Supply Chains

Monitoring  
Shipping Delays



ESP Logistics  
Mediterranean Sea

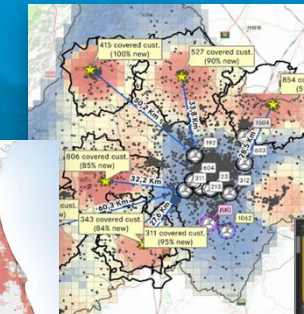
Market  
Research

Earthquake Damage  
& Insurance Coverage



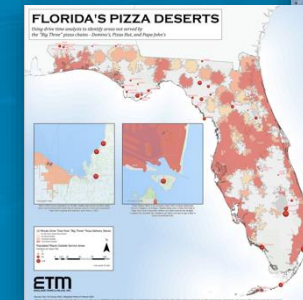
California Earthquake  
Authority

Automobile Dealership  
Trade Area Analysis



JAKALA  
China

Restaurant  
Market Assessment



ETM  
Miami, Florida

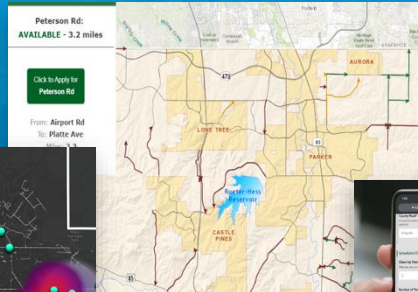
Market  
Planning



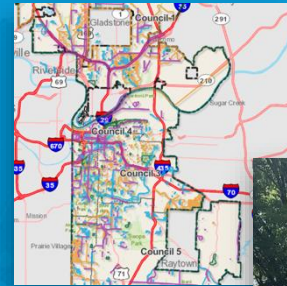
Penske  
US

# Public Engagement and Collaboration Portals

Adopt-a-Road



Capital Projects Transparency



Visualizing Future Construction



Geospatial Hub



Digital Atlas



Statewide Maps Portal



City of Reno Nevada



Geoscience Australia Australia

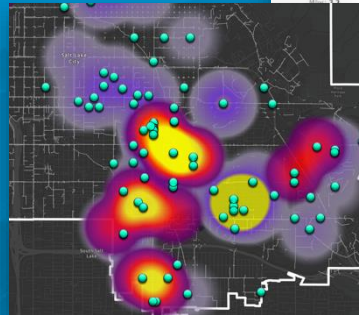


Open Data

City of San Marcos California

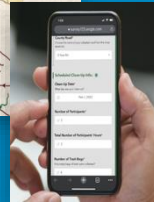
California Department of Water Resources California

Adopt-a-Storm Drain



Salt Lake City Department of Public Utilities Utah

Douglas County Government Colorado



Kansas City, Missouri

inCitu New York City, New York

Real-Time Snowplow Reporting

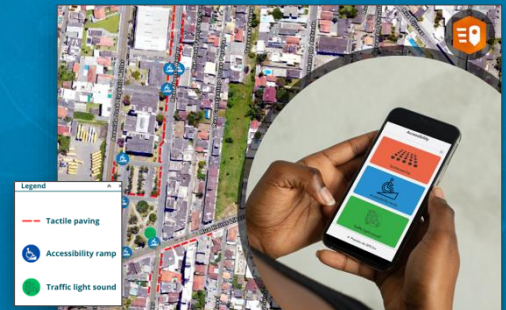


3D Virtual City Explorer



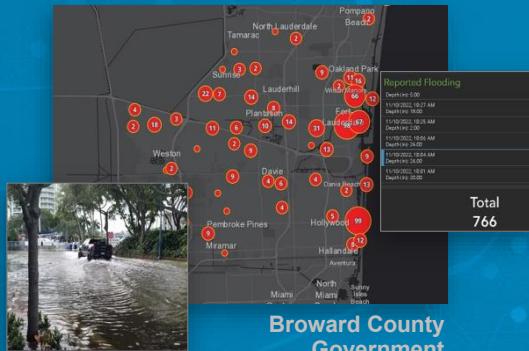
Serviço Geológico do Brasil Rio de Janeiro, Brazil

Mapping Accessible Routes for People with Disabilities



Município de Itajaí Brazil

Crowdsourcing Flood Damage



Broward County Government Florida

Pro-West & Associates Polk County, Minnesota