



# House Committee on Transportation

May 4, 2023



# Vermont Housing & Conservation Board Statutory Purpose



“the dual goals of creating affordable housing for Vermonters, and conserving and protecting Vermont’s agricultural land, forestland, historic properties, important natural areas, and recreational lands of primary importance to the economic vitality and quality of life of the State.”

10 V.S.A.15 §302



## **VHCB Results: FY 2022 and FY 2023**

**State Investment: \$56.6M**

**Leverage: \$352.7M**

- 1,218 homes and apartments
  - 24 farms; 4,176 acres conserved
  - 20 natural areas; forests; parks and trails:  
4,500 acres conserved
  - 4 historic preservation projects
  - 154 farm and forest enterprises were  
provided business planning and technical  
assistance.
- **VHCB Program Impacts**
  - Downtown/Village Revitalization
  - Outdoor Recreation
  - Housing the Homeless
  - Rural Community Development
  - Homes for Workers
  - Farm and Forest next generation  
transfers
  - Water Quality
  - Historic Gathering Places

# 35 Years of Housing and Conservation

- 275,699 acres of working forests, natural areas and recreational lands
- 15,000 affordable homes – rental and homeownership
- 170,918 acres on 789 farms
- 81 historic buildings restored
- 900 businesses enrolled in our Farm & Forest Viability Program
- Over 600 AmeriCorps members have served through VHCB AmeriCorps
- 2,828 homes with reduced lead paint hazards

**\$400 million invested → \$2.2 billion leveraged**



Algiers Housing



Broad Brook Community Center



The Gilford County Store

# Conserving Vermont's farms, forests, lands and communities



Kingdom Trails, Burke

- Recreational Lands, Forests, and Natural Areas Conservation
- Agricultural lands conservation

- Historic Preservation
- Water Quality
- VHCB AmeriCorps

- Farm and Forest Viability
- Rural Economic Development Initiative



Lamoille River Access, Cambridge Junction



Rebop Farm, Brattleboro



McKnight Lane Net Zero  
Modular Homes,  
Waltham

## Housing Programs

- Rental Housing Development, Rehabilitation & Preservation
- Home Ownership
- Home Accessibility Improvements
- Community Planning & Technical Assistance
- Farm Worker Housing
- Manufactured Home Communities
- Housing for persons experiencing homelessness



New Avenue, St. Johnsbury

# Wright House and Harrington Village

## 80 new homes in Shelburne



With help from the VA, Steven van Zandt, an Army veteran, was able to move out of the woods and into a new apartment with federal rental assistance. Champlain Housing Trust, Evernorth and Cathedral Square developed the new neighborhood with apartments for families, seniors, and four homes built by Green Mountain Habitat for Humanity. Shelburne gains \$78,000 annually in property taxes from the development.



Laplatte River marshland with public trails was conserved as part of the project.



# Housing, Energy and Transportation



## Laurentide and Juniper House at Cambrian Rise, Burlington

- 146 new affordable homes
- Connection to mass transit
- Plan to connect the Old North End to the Burlington Bike Path
- Helping to meet climate goals:
  - 4 EV charging stations
  - Recognized with DOE's Energy Equity Award and the Building Envelope Campaign Award



# Meeting energy goals: EV Charging

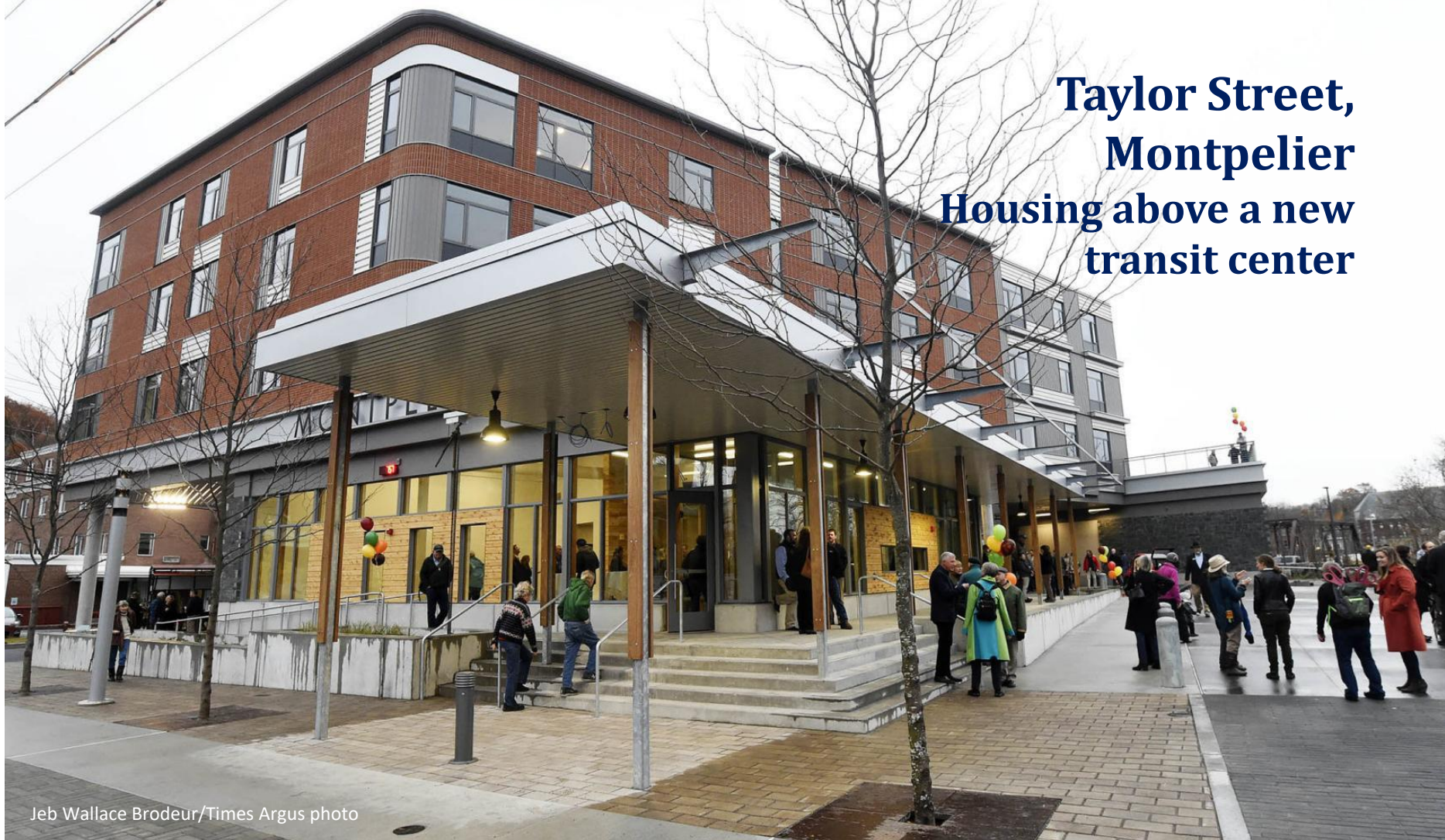




## **Transit oriented shelter and housing - Good Samaritan Haven Welcome Center, Berlin**

Good Samaritan Haven opened a new shelter with 35 beds in August 2022 to provide housing with support services for individuals experiencing homelessness. The need is great, with more than 400 people currently without permanent housing in Central Vermont; nearly 100 are completely unhoused and may be living on the streets or in the woods this winter.

## Taylor Street, Montpelier Housing above a new transit center



Jeb Wallace Brodeur/Times Argus photo

Downstreet Housing & Community Development and Housing Vermont developed 30 mixed-income apartments above a new downtown transit center using HRB funds, LIHTC equity, and other resources. Targeted for households with incomes ranging from below 50% of median to 80-120% of median.

# Housing and Infrastructure



## Bayview Crossing, South Hero

- Developed by Cathedral Square Corporation
- 30 apartments for adults over 55 at a range of incomes
- Developed in the village center by the community health center and library



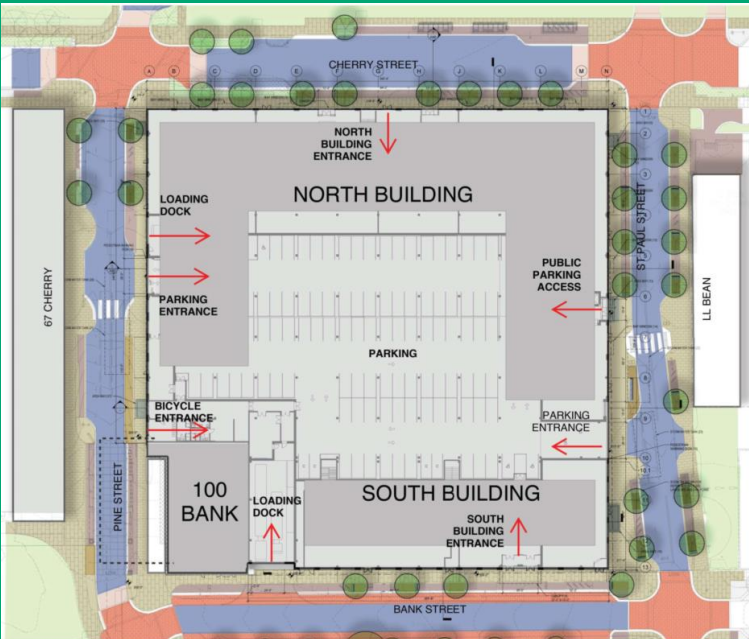
## Firehouse Apartments, Bristol

- Developed by Evernorth and Addison County Community Trust
- 20 new homes in Bristol
- An NBRC grant helped cover the cost of the site infrastructure.

# Downtown Development

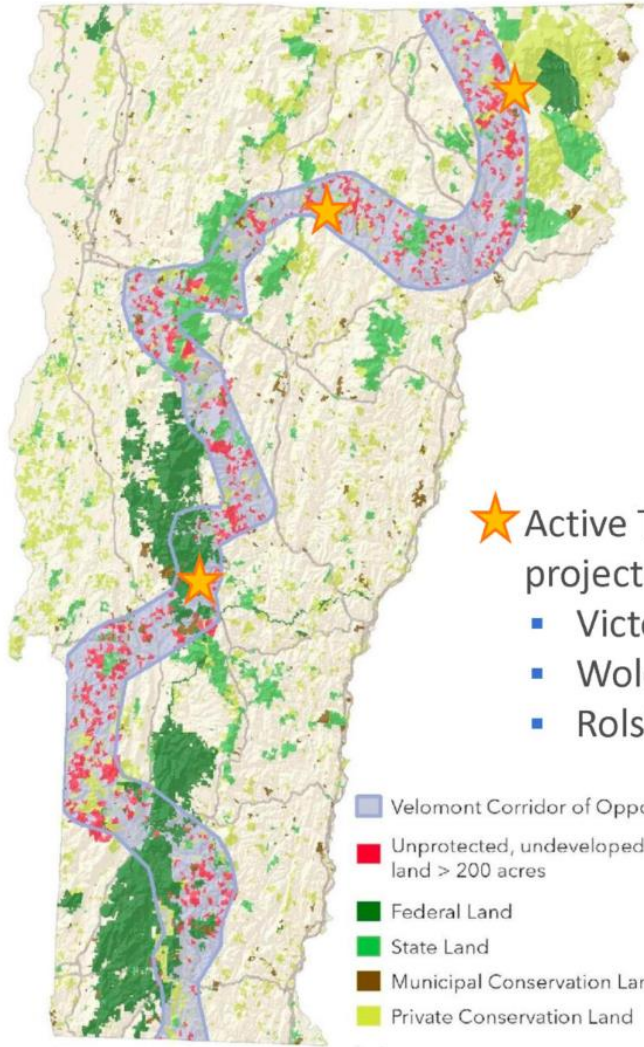


Bellows Falls Garage



The Putnam Block, Bennington

# Trail Networks: Wolcott Community Forest and Velomont



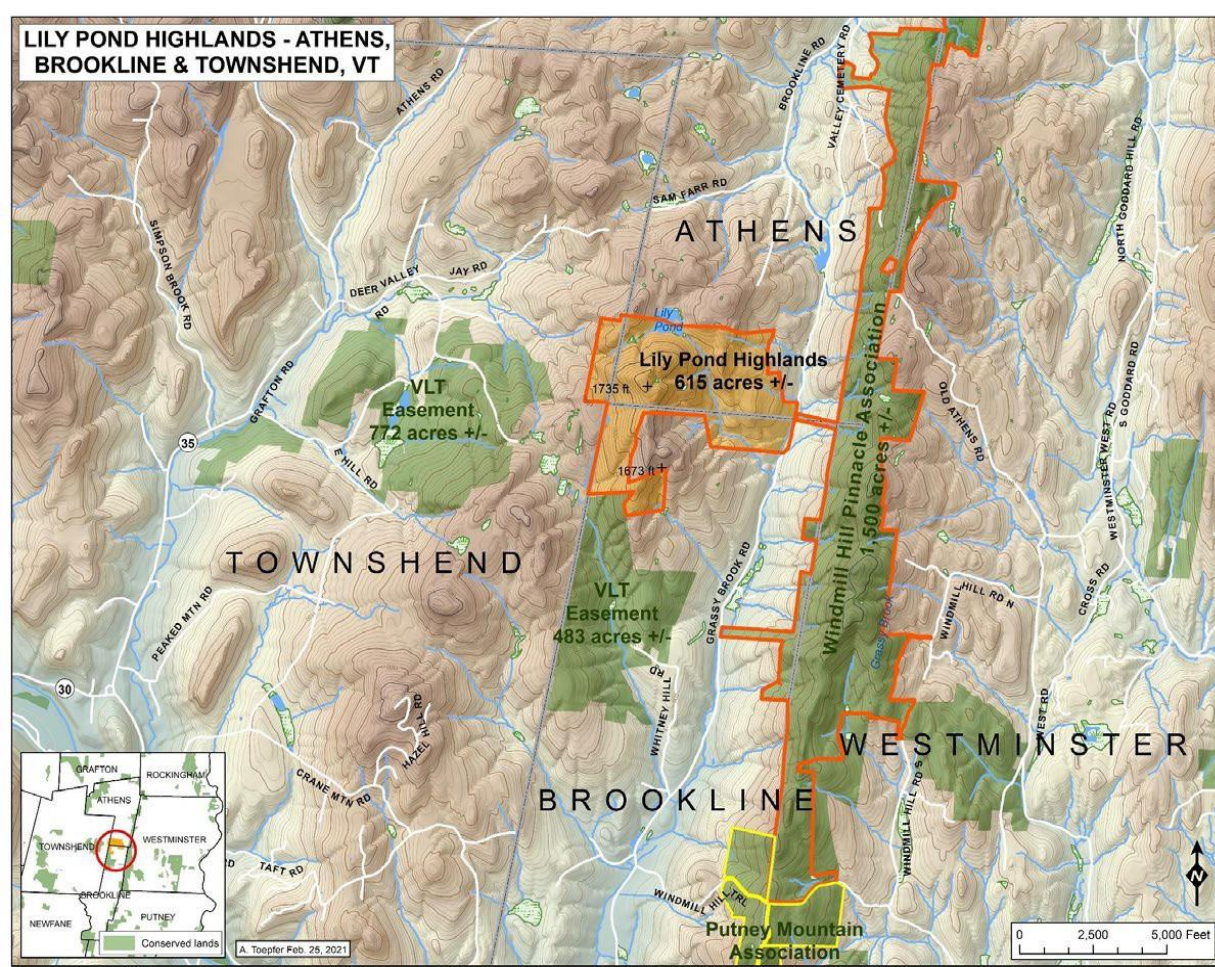
- ★ Active Trust for Public Land projects in the corridor
  - Victory Hill
  - Wolcott Community Forest
  - Rolston Rest

- Velomont Corridor of Opportunity
- Unprotected, undeveloped private land > 200 acres
- Federal Land
- State Land
- Municipal Conservation Land
- Private Conservation Land



# Trail Networks

Windmill Hill  
Pinnacle and the  
Putney  
Mountain  
Association



# Historic Preservation



**The historic Danville Train Station located on the Lamoille Valley Rail Trail will be restored.**





# Building Bridges



**Sanborn Covered Bridge, Lyndon**



**Martin Covered Bridge, Marshfield**



**Gus Seelig**

Executive Director

[gseelig@vhcb.org](mailto:gseelig@vhcb.org)

(802) 828-3201

**Pollaidh Major**

Director of Policy  
and Special Projects

[p\\_major@vhcb.org](mailto:p_major@vhcb.org)

(802) 828-5065



**Cross Vermont Trail Recreation Bridge, East Montpelier**