

Department of Buildings and General Services Update

Jennifer M. V. Fitch, P.E.
Commissioner

Joe Aja
Director, Design & Construction

January 3, 2024



Montpelier: State House - Heating Venting and Air Conditioning (HVAC)

Project Status: The Air Handling Unit (AHU) serving the Senate committee rooms, the Sergeant-at-Arms office, Secretary of the Senate offices, and the senate cloak room has been replaced. The remaining AHUs are scheduled to be installed in summer 2024 and summer 2025, depending on the status of the proposed State House renovation.

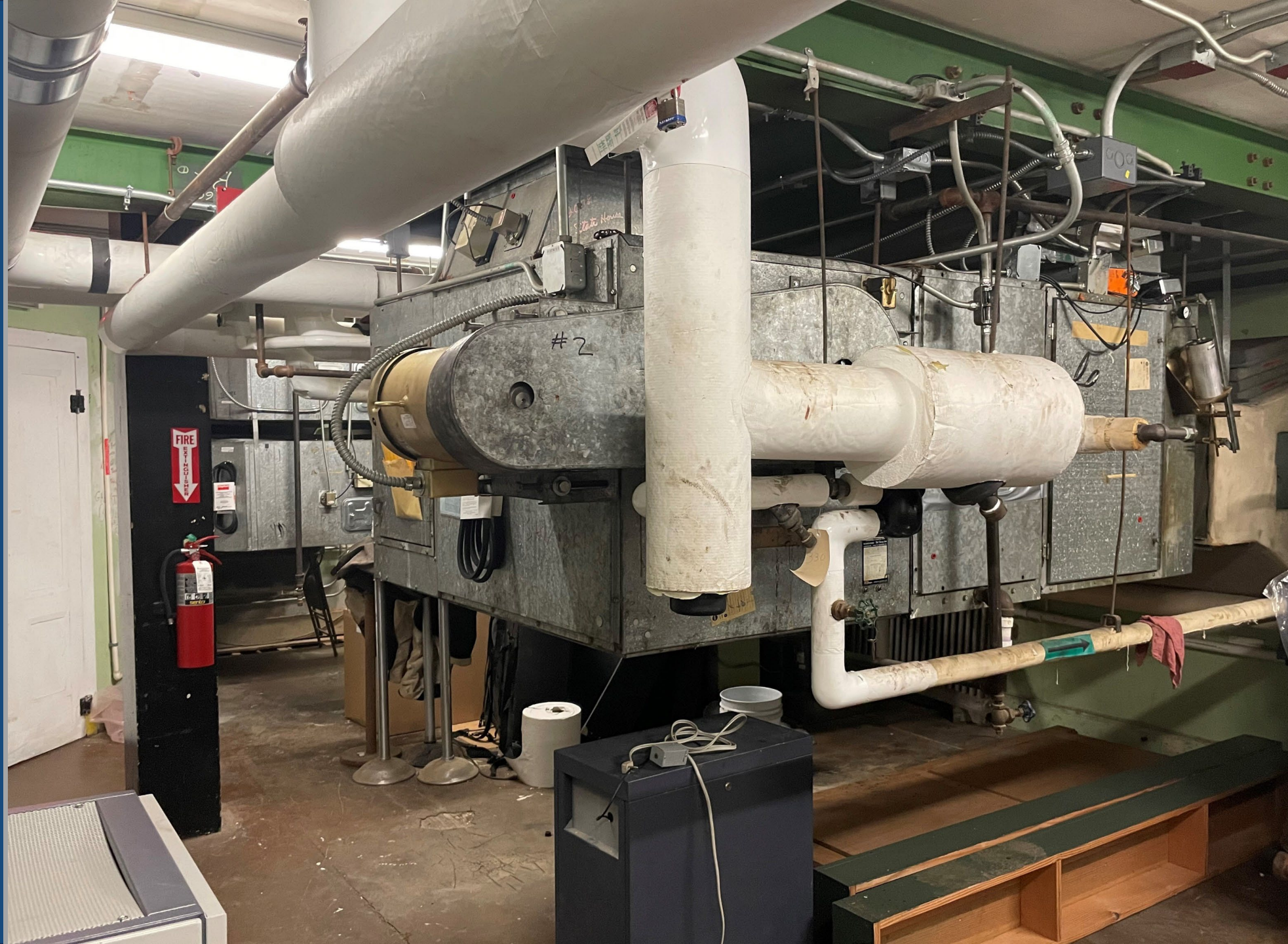
Project Scope: Replace HVAC equipment in the State House to provide proper temperature, ventilation, and humidity control.

Prior Funding: \$7,300,000

FY24 Appropriation: \$3,725,000

Funding Encumbered: \$12,243,340

Funding Expended: \$2,166,252



Newport: Orleans County Superior Court - Replacement

Project Status: Currently in planning. Land search failed to provide a property that met the needs or cost.

Project Scope: Determine space needs for the Judicial Branch through programming and planning. Purchase land parcel and begin design.

FY24 Appropriation: \$750,000

Funding Encumbered: \$121,270

Funding Expended: \$107,814



Statewide Corrections HVAC

Project Status: Awaiting guidance.

Project Scope: Statewide, planning, design, and construction for HVAC system 21 upgrades and replacements at correctional facilities.

FY24 Appropriation: \$300,000

Funding Encumbered: \$0

Funding Expended: \$0

- **Northern State Correctional Facility (NSCF)**
Installation of a 350-ton air-cooled chiller with chilled water closed loop distribution to 27 existing air handling units and ten new unit ventilators. *Estimated total design and construction cost: \$2,400,000.*
- **Northeast Regional Correctional Facility (NERCF)**
Installation of a 75-ton air-cooled chiller with glycol closed loop distribution to four existing air handling units and three new unit ventilators.
Estimated total design and construction cost: \$1,500,000.
- **Caledonia County Work Camp (CCWC)**
Installation of a 350-ton air-cooled chiller with chilled water closed loop distribution to 27 existing air handling units and ten new unit ventilators.
Estimated total design and construction cost: \$575,000.
- **Northwest State Correctional Facility (NWSCF)**
Installation of a 150-ton air-cooled chiller with chilled water closed loop distribution to 12 new air handling units and four new unit ventilators as well as the enlargement of existing ductwork distribution and roof restructuring. *Estimated total design and construction cost: \$16,600,000.*
- **Southern State Correctional Facility (SSCF)**
Installation of a 350-ton air-cooled chiller with chilled water closed loop distribution to 27 existing air handling units and ten new unit ventilators. *Estimated total design and construction cost: \$3,000,000.*

Proposed Women's Correctional and Reentry Facility

Project Status: Identified three potential sites for facility or facilities.

Project Scope: Women's correctional facility and reentry facility planning and design.

FY24 Appropriation: \$1,500,000

Funding Encumbered: \$0

Funding Expended: \$0



WOMEN'S CORRECTIONAL AND RE-ENTRY FACILITY

PART III - 10- YEAR DEVELOPMENT PLAN

PREPARED FOR THE STATE OF VERMONT

June 26th 2023

Montpelier: State House Expansion Design Documents

Project Status:

Programming/Schematic Design in process for phase I, approved by Joint Legislative Management Committee.

Project Scope: Ensure a safer working environment and efficient operation of the State House, provide a secure accessible entrance to mitigate the impact of any future pandemics, and allow the Legislature functions to continue unimpaired during pandemic times.

ARPA: \$1,500,000

FY24 Appropriation: \$150,000
Cash Fund

FY20: \$71,960 Planning/Use/Cont

Funding Encumbered: \$737,841

Funding Expended: \$153,856



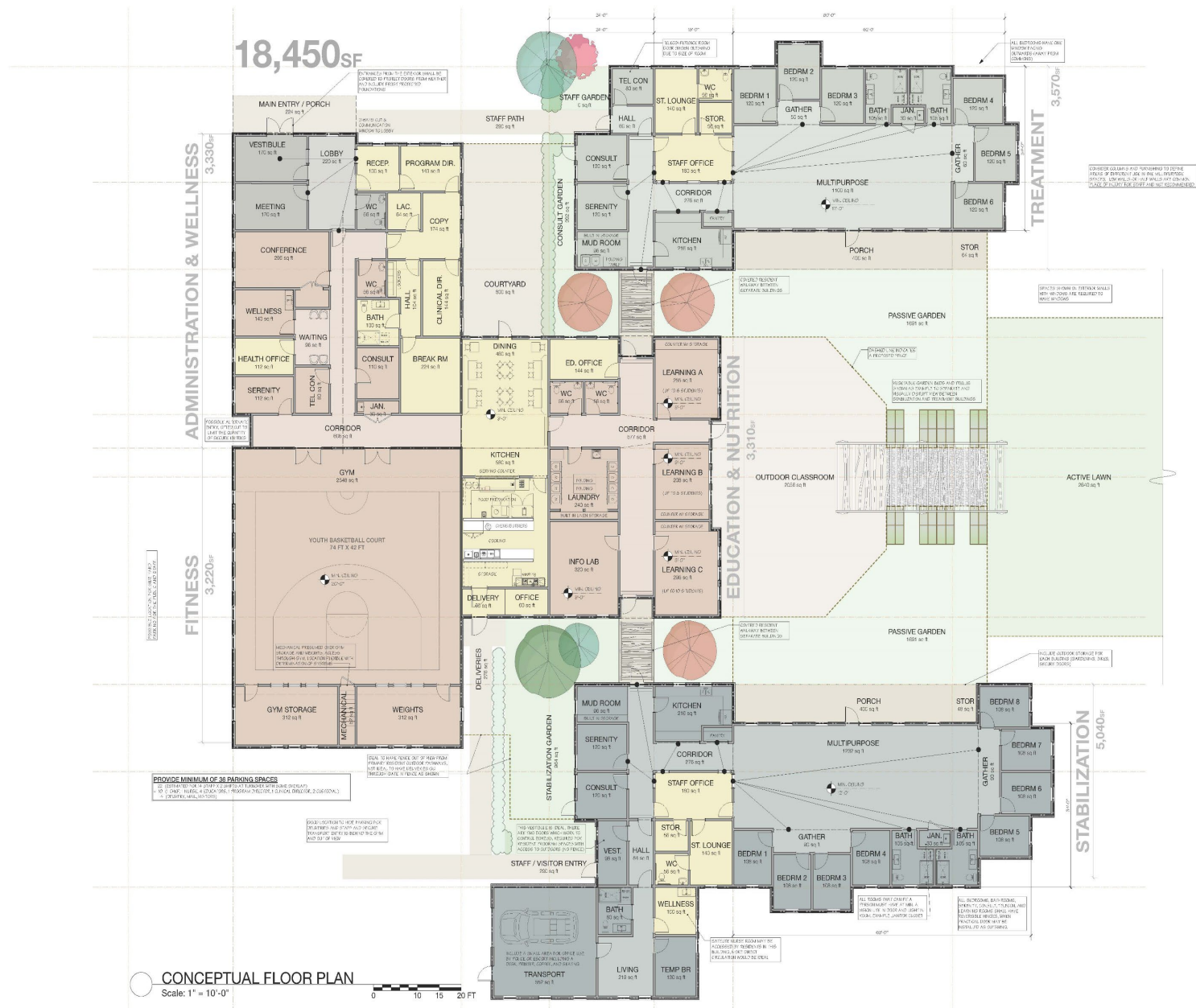
DCF Short-Term Stabilization Facility

Project Status: RFP for a developer to build to own the facility.

Project Scope: Planning and design for Department of Children and Families' short-term stabilization facility.

FY24 Appropriation: \$1,000,000
Cash Fund

Funding Encumbered: \$0
Funding Expended: \$0



LEGEND

- REGULAR CONNECTION REQUIRED BETWEEN THESE SPACES
- SECURE ACCESS POINT
- DOOR
- WINDOW
- WALL - LOW WALL

ENTRY
ADMIN
COMMON
STABILIZATION
TREATMENT
HARDSCAPE
ACTIVE LANDSCAPE
PASSIVE LANDSCAPE

2 CONCEPT KITCHEN
Scale: 1/4" = 1'-0"

3 CONCEPT BEDROOM
Scale: 1/4" = 1'-0"

CONCEPTUAL FLOOR PLAN
Scale: 1" = 10'-0"